



**Board of Trustees - Regular Meeting
Board of Trustees Governance Committee,
Teaching and Learning Committee, Planning and
Operations Committee, Facilities Committee and
Resources Committee
Tuesday, March 03, 2015 6:00 PM
Riverside City College - Bradshaw Building - Hall
of Fame, 4800 Magnolia Avenue, Riverside, CA
92506**

ORDER OF BUSINESS

Pledge of Allegiance

Anyone who wishes to make a presentation to the Board on an agenda item is requested to please fill out a "REQUEST TO ADDRESS THE BOARD OF TRUSTEES" card, available from the Public Affairs Officer. However, the Board Chairperson will invite comments on specific agenda items during the meeting before final votes are taken. Please make sure that the Secretary of the Board has the correct spelling of your name and address to maintain proper records. Comments should be limited to five (5) minutes or less.

Anyone who requires a disability-related modification or accommodation in order to participate in any meeting should contact the Chancellor's Office at (951) 222-8801 as far in advance of the meeting as possible.

Any public records relating to an open session agenda item that is distributed within 72 hours prior to the meeting is available for public inspection at the Riverside Community College District Chancellor's Office, Suite 210, 1533 Spruce Street, Riverside, California, 92507 or online at www.rccd.edu/administration/board.

- I. COMMENTS FROM THE PUBLIC
Board invites comments from the public regarding any matters within the jurisdiction of the Board of Trustees. Pursuant to the Ralph M. Brown Act, the Board cannot address or respond to comments made under Public Comment.
- II. PUBLIC HEARING (NONE)
- III. CHANCELLOR'S REPORT
 - A. [Chancellor's Communications](#)
Information Only
- IV. BOARD COMMITTEE REPORTS
 - A. Governance (None)
 - B. Teaching and Learning
 - 1. [Presentation on the Student Success Scorecard for 2014](#)

The Committee to review the findings of the Student Success Scorecard for 2014.
 - C. Planning and Operations (None)
 - D. Resources (None)
 - E. Facilities (None)
- V. OTHER BUSINESS (NONE)
- VI. CLOSED SESSION (NONE)
- VII. ADJOURNMENT



e-board , Agenda Item

Agenda Item

Agenda Item (III-A)

Meeting 3/3/2015 - Committee
Agenda Item Chancellor's Report (III-A)
Subject Chancellor's Communications
College/District District
Information Only

Background Narrative:

Chancellor will share general information to the Board of Trustees, including federal, state and local interests and District information.

Prepared By: Michael Burke, Ph.D., Chancellor

Attachments:



Agenda Item (IV-B-1)

Meeting	3/3/2015 - Committee
Agenda Item	Committee - Teaching and Learning (IV-B-1)
Subject	Presentation on the Student Success Scorecard for 2014
College/District	District
Funding	N/A
Recommended Action	It is recommended that the Board of Trustees accept the findings of the Student Success Scorecard for 2014.

Background Narrative:

Presented for the Board's review and consideration is the Student Success Scorecard (SSS) issued by the California Community Colleges Chancellor's Office in March 2014. The report's objectives are to inform policymakers, local college officials, and elected boards about college-specific performance in five areas of effort. This presentation will highlight Riverside Community College District's findings compared to the State of California, over the most recent five cohorts, with an emphasis on student demographic subgroup performance.

Prepared By: Michael Reiner, Vice Chancellor, Educational Services
David Torres, Dean, Institutional Research and Strategic Planning
Debbie McDowell, Administrative Assistant IV

Attachments:

[Presentation of Student Success Scorecard](#)

2014 Student Success Scorecard:

Riverside Community College District and College Rates

DAVID TORRES, DEAN INSTITUTIONAL RESEARCH & STRATEGIC PLANNING

MICHAEL REINER, VICE CHANCELLOR EDUCATIONAL SERVICES

RCCD BOARD OF TRUSTEES - TEACHING AND LEARNING COMMITTEE

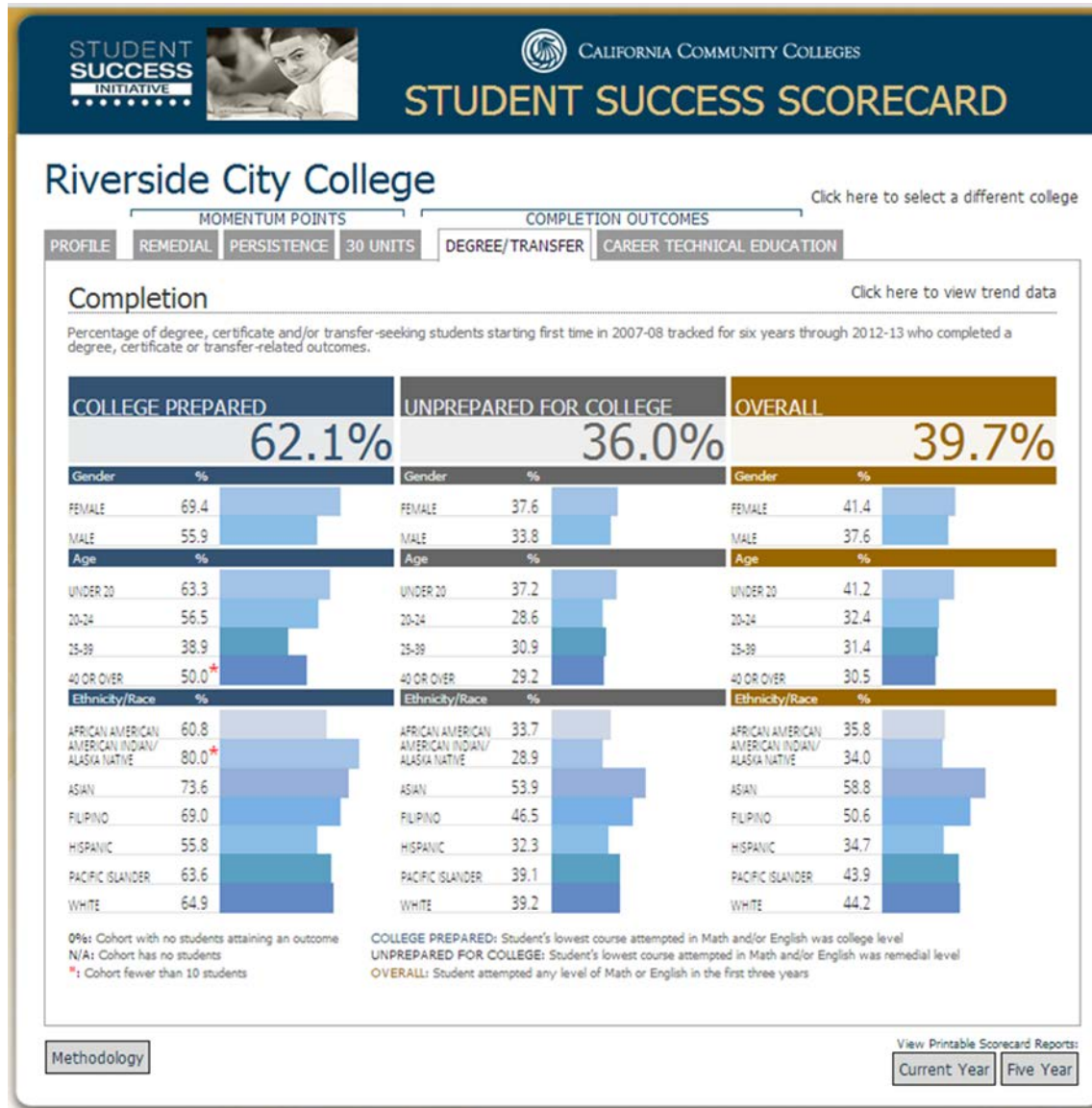
MARCH 3, 2015



Student Success Scorecard (SSS) Background

- SSS builds upon the Accountability Reporting for the Community Colleges (ARCC report).
- The California Community Colleges Chancellor's Office produces this set of performance indicators annually from standard data elements.
- The report's objective is to inform policymakers, local college officials, elected boards and the public at large of
 - overall system performance and
 - individual college performance in specific areas of effort.

2014 Scorecard: Good, but limited...



Making a good tool better...

- The latest Scorecard cohort began in 2007-08.
- Using locally-available data, we know when and where students attended classes.
- Using the student identification numbers, students were “assigned” according to which colleges they enrolled at most often during the 6-year time period.
- Once students were “assigned” to campuses, the findings were separated by campus without altering the Chancellor’s Office method.
- In the unusual case of a student taking the same unit total at more than one college, each college “claims” these students.

Example: Attempted Units as College Proxy

74% 
MVC

20% 
NC

6% 
RCC

For the vast majority of students in this sample (92%), at least 60% of their attempted coursework was at one college only.

Moreno Valley
College

Format of this presentation:

Each of the five measures will be shown:

- State, district and college rates for the past five cohorts
- District subgroup rates for the most recent cohort
- College Prepared subgroups not presented
 - RCCD College Prepared = ~15%
 - California College Prepared = ~25%

Caveat:

Scorecard performance indicators are based on subgroups:

- Students must meet criteria for group inclusion.
- Indicators are related only to their subgroups.
- For example, for Completion indicator:
 - RCCD Scorecard sample = ~10% of entire RCCD population
 - California Scorecard sample = ~7% of entire CCC population

RCCD Completions...

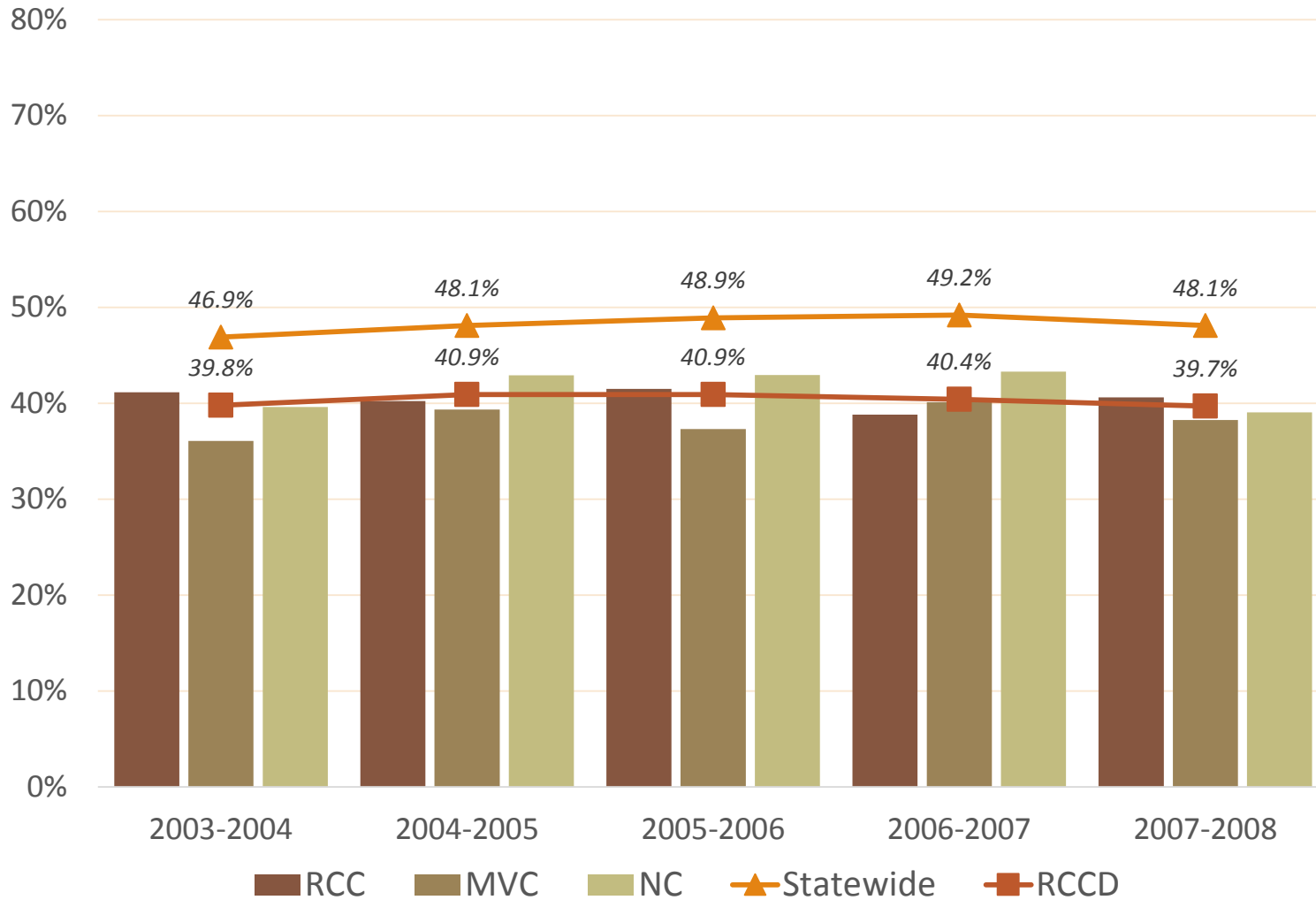
Degree / Transfer:

Percentage of

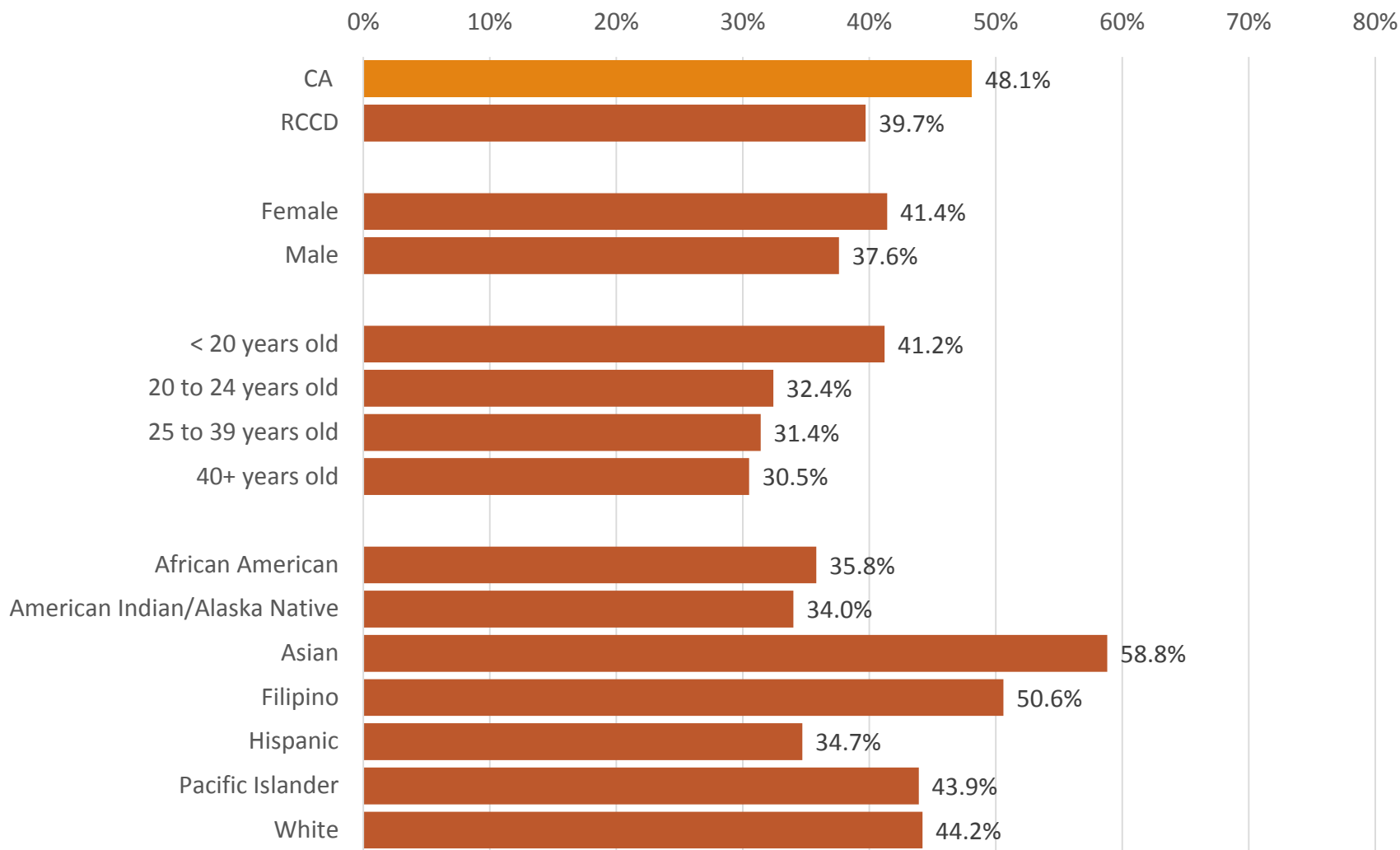
- degree, certificate and/or transfer-seeking students*
- starting first time in the cohort year & tracked for six years
- completed a degree, certificate or transfer-related outcomes.

**Student attempted any level of Math or English in the first three years*

Student Success Scorecard Completions: State, District and College Rates



Student Success Scorecard Degree/Transfer Completions: District Sub-Group Rates, Most Recent Cohort



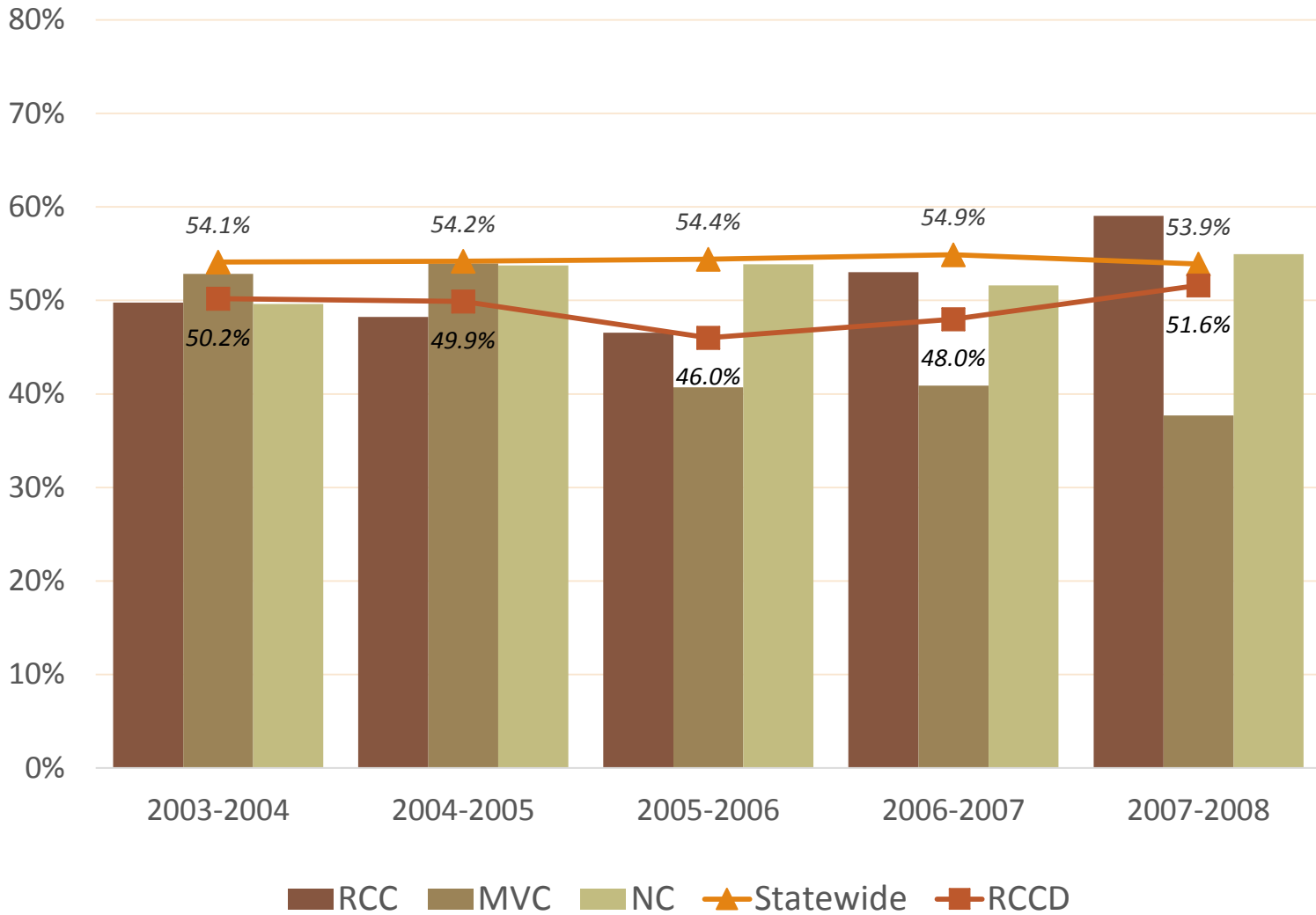
RCCD Completions...

Career Technical Education

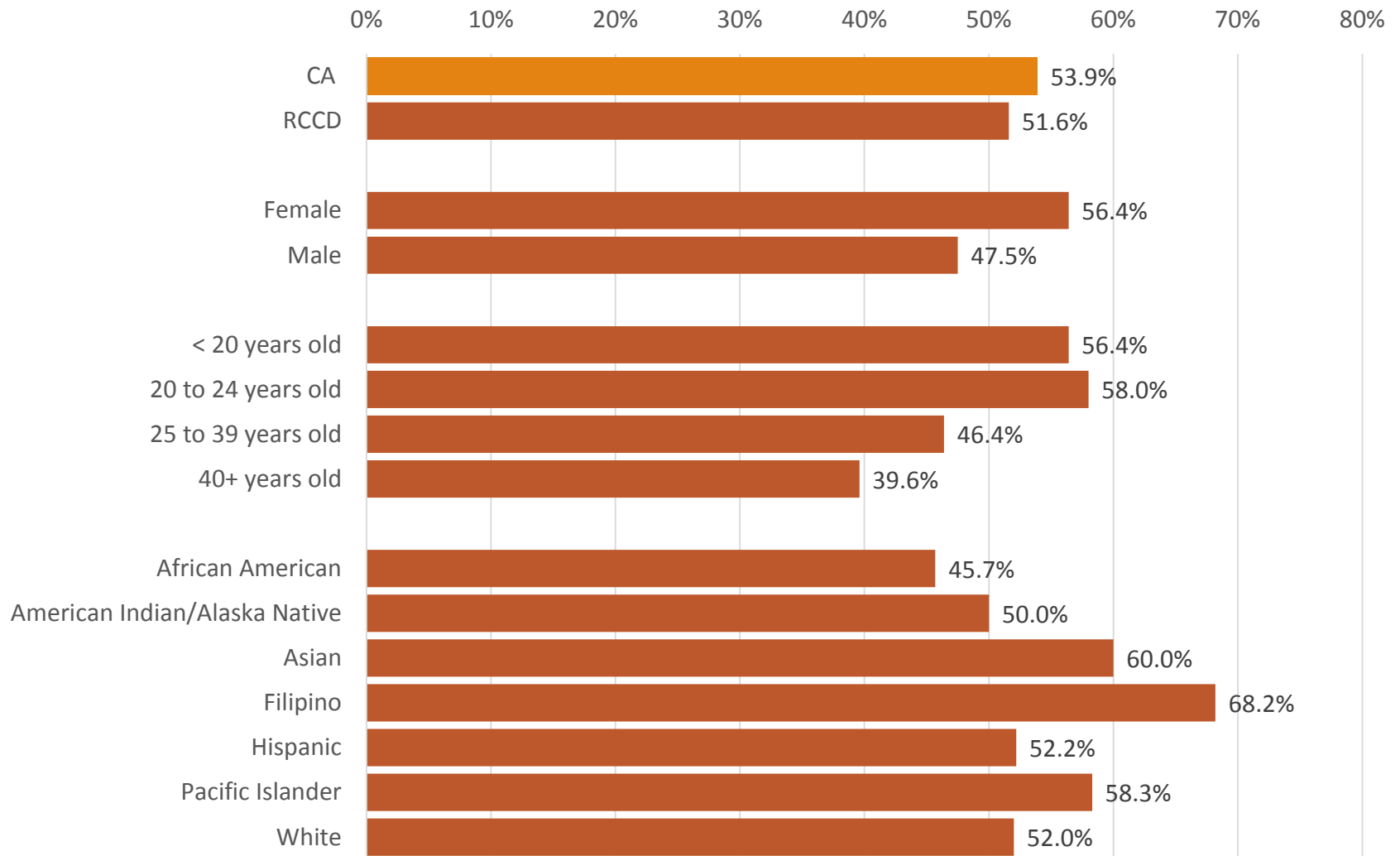
Percentage of

- students tracked for six years who started first time in the cohort year
- completing more than eight units in courses classified as career technical education (*coded as clearly or advanced occupational*)
- in a single discipline (2 digit TOP code)
- and completed a degree, certificate or transferred.

Career & Technical Education Completions: State, District and College Rates



Student Success Scorecard Completions, CTE: District Sub-Group Rates, Most Recent Cohort

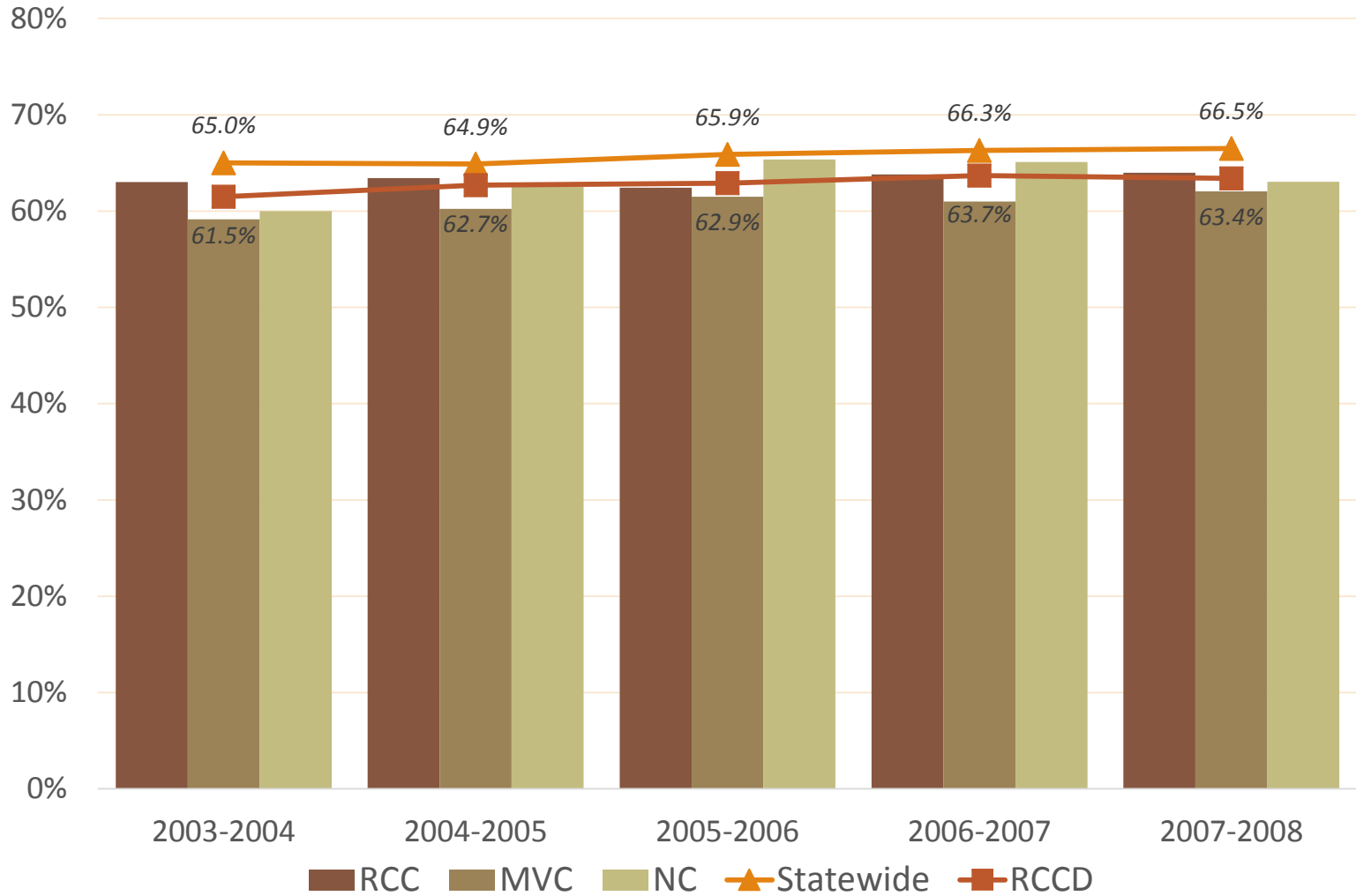


RCCD Momentum Point: 30 Units

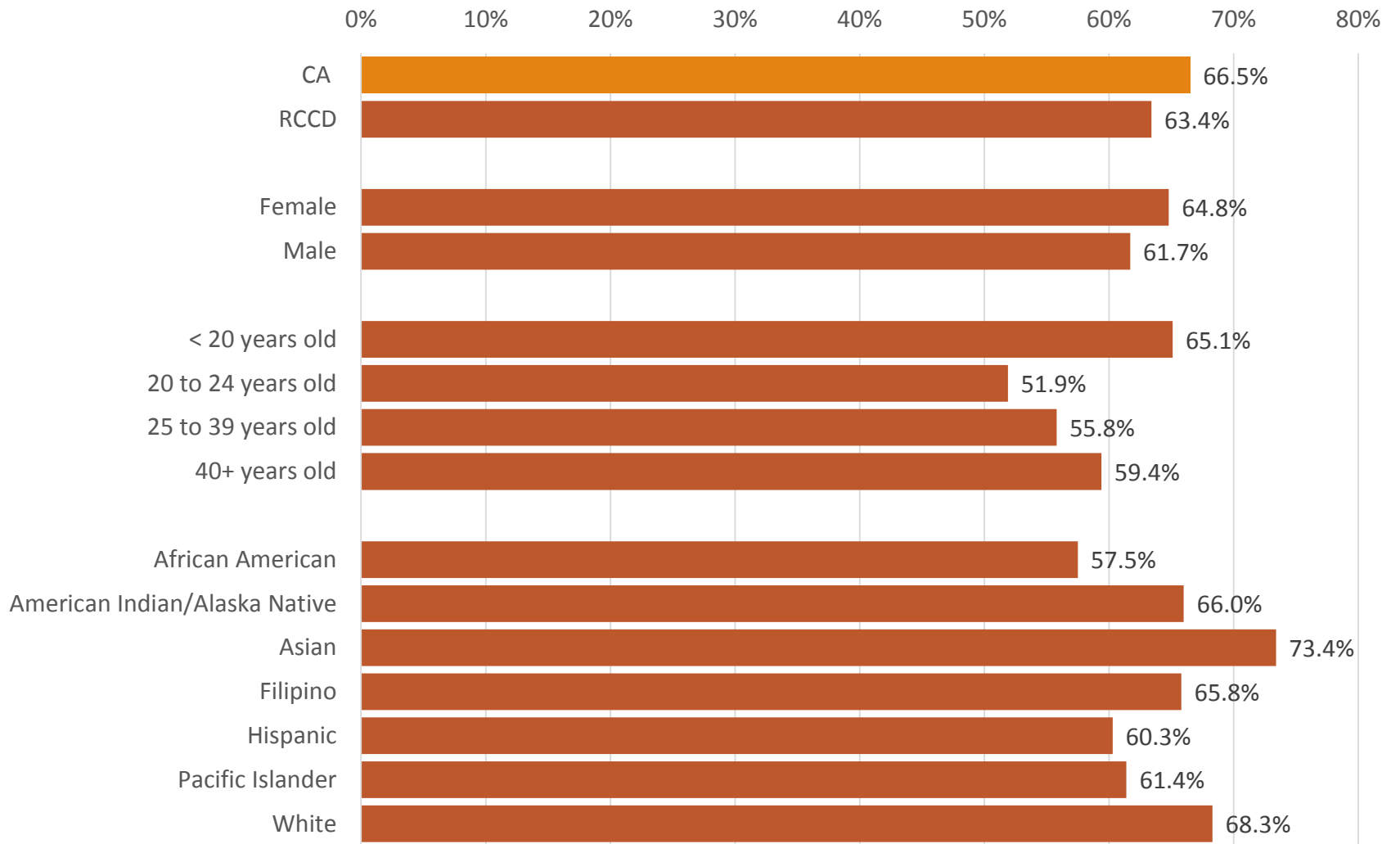
- Percentage of degree, certificate and/or transfer-seeking students*
- tracked for six years
- who achieved at least 30 units.

**Student attempted any level of Math or English in the first three years*

30 Units Momentum Point: State, District and College Rates



30 Units Momentum Point: District Sub-Group Rates, Most Recent Cohort

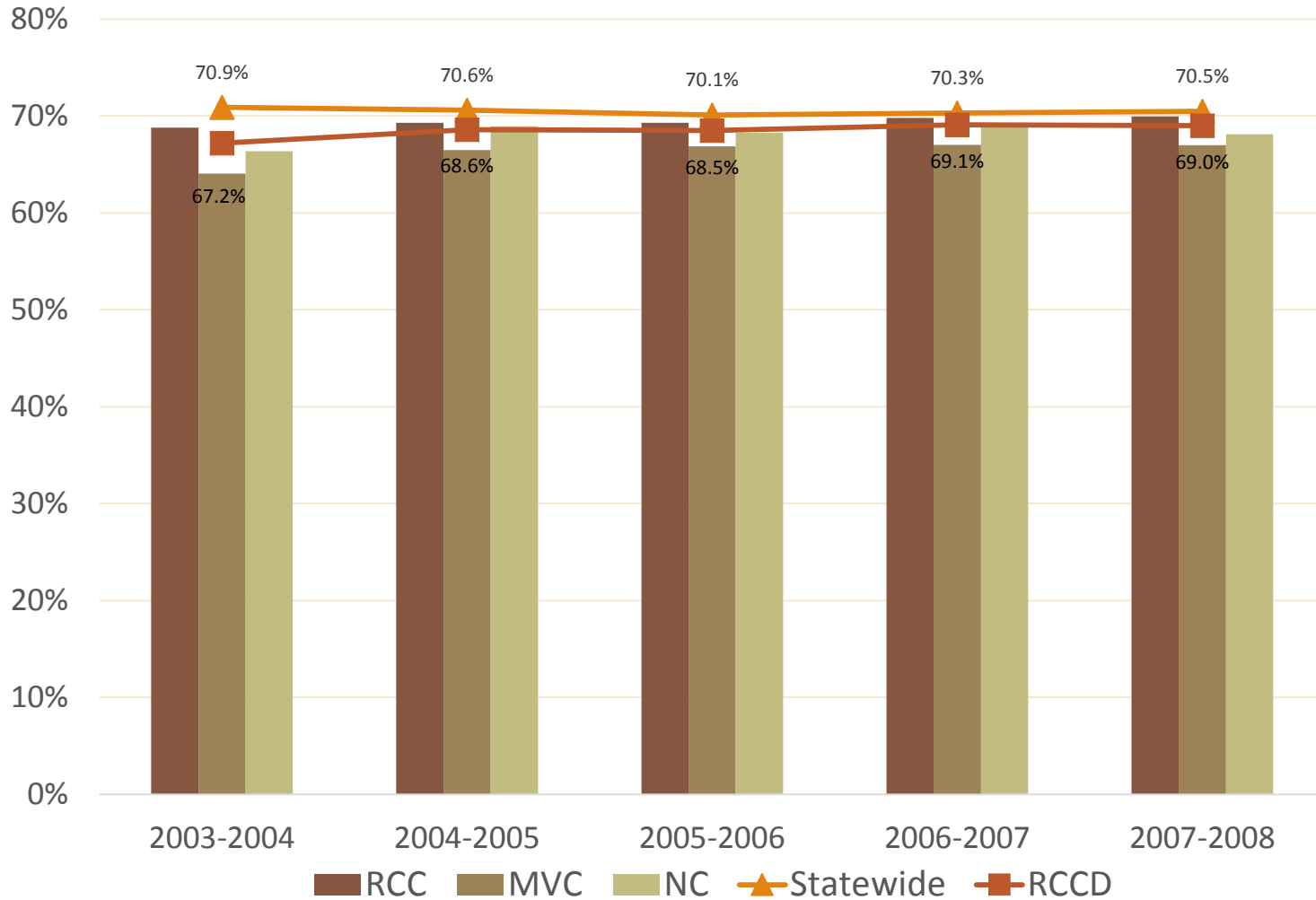


RCCD Momentum Point: Persistence

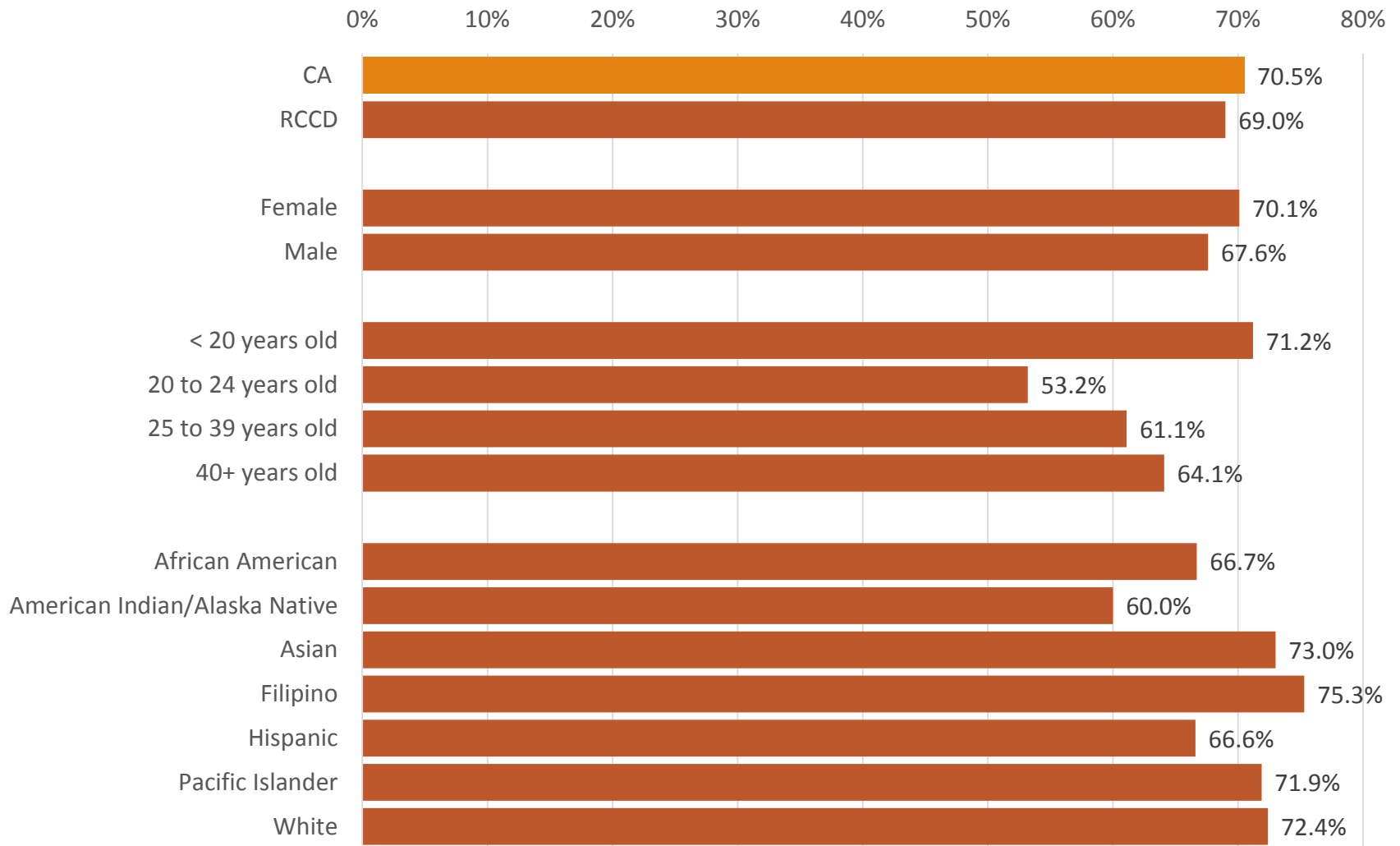
- Percentage of degree, certificate and/or transfer-seeking students
- tracked for six years
- enrolled in the first three consecutive terms.

**Student attempted any level of Math or English in the first three years*

Persistence Momentum Point: State, District and College Rates



Persistence Momentum Point: District Sub-Group Rates, Most Recent Cohort

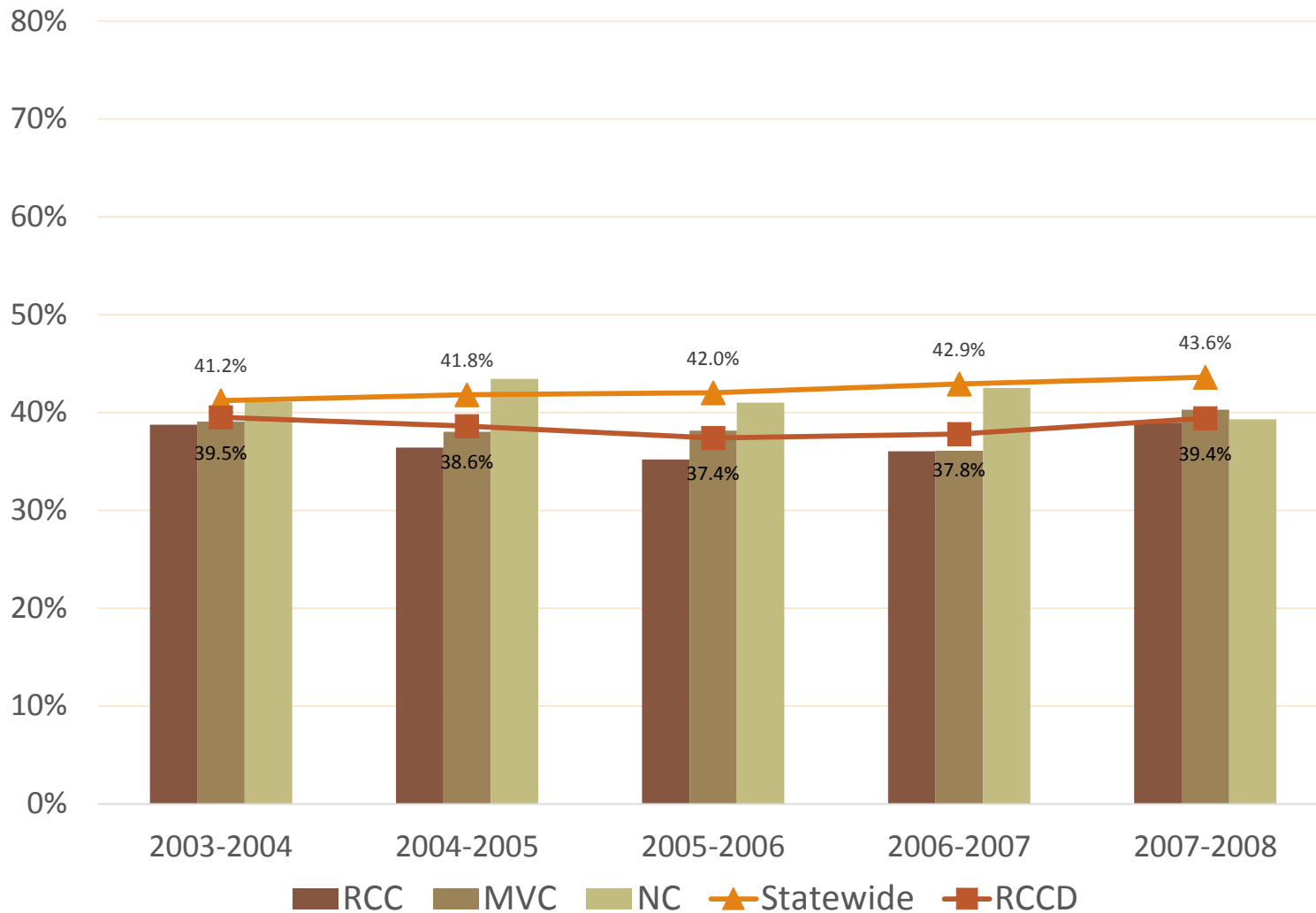


Remedial Momentum Point

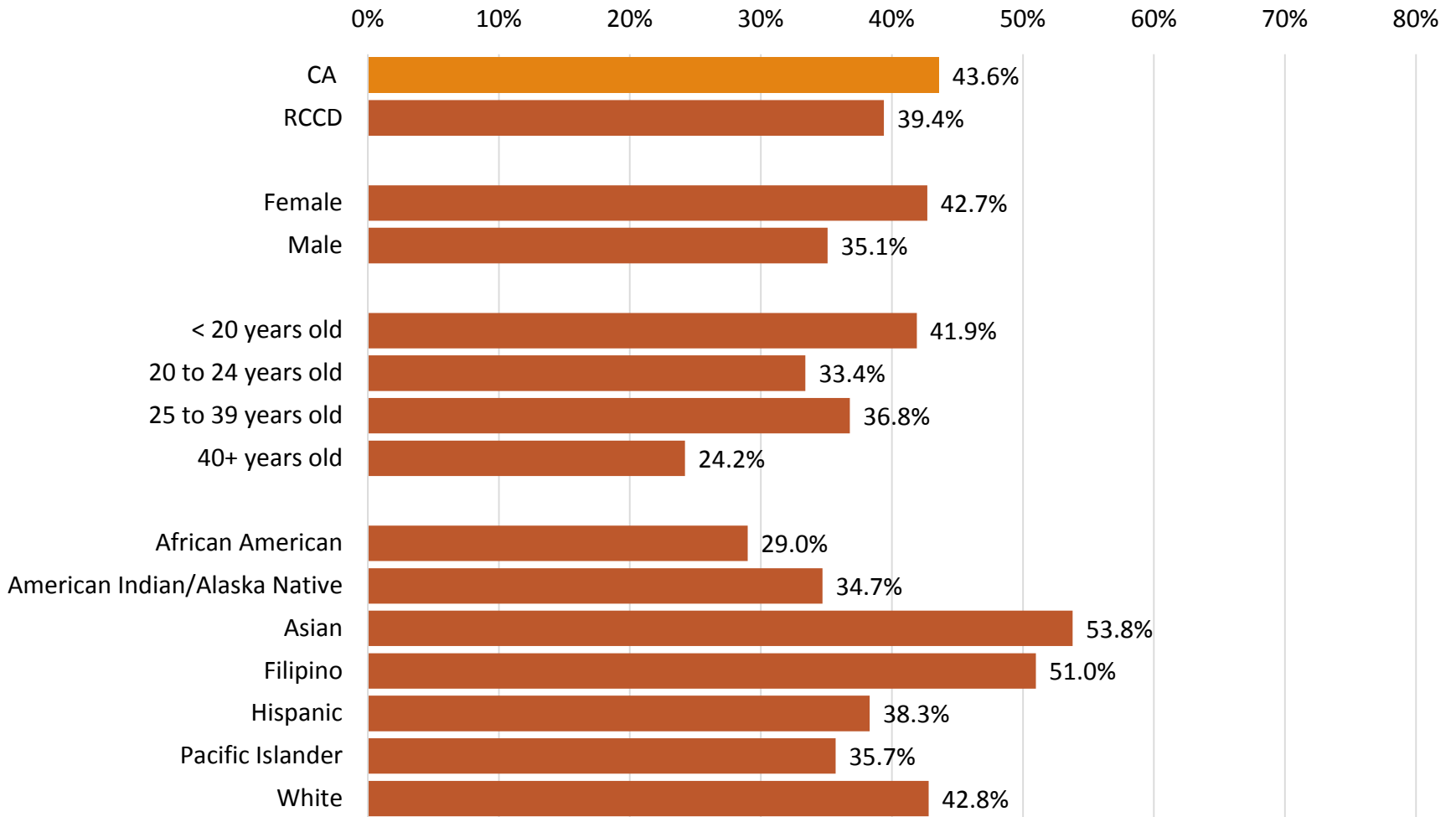
Percentage of first-time credit students

- tracked for six years
- below transfer level in English, mathematics, and/or ESL and
- completed a college-level course in the same discipline.

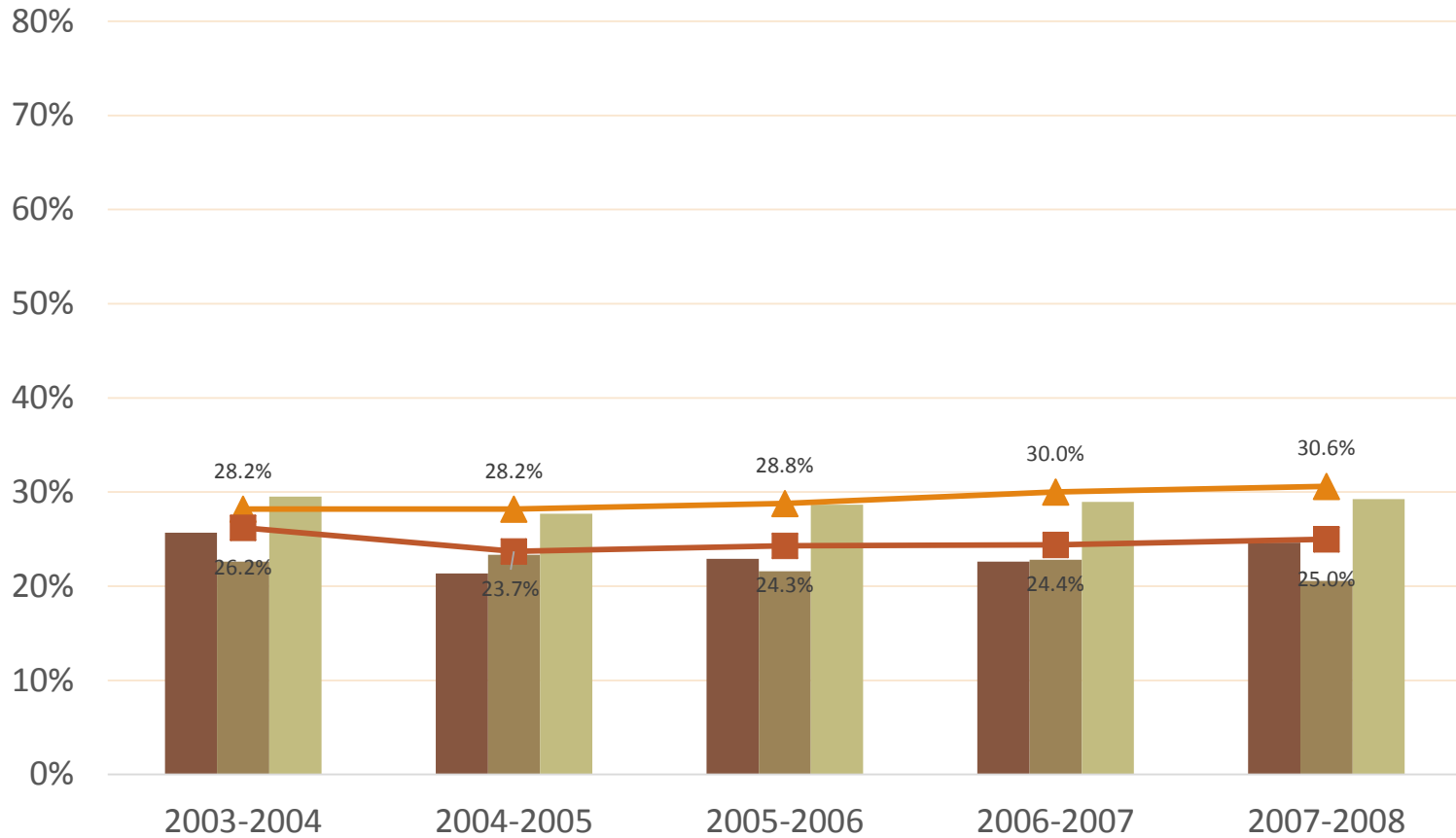
Remedial English Momentum Point: State, District and College Rates



Remedial English Momentum Point: District Sub-Group Rates, Most Recent Cohort

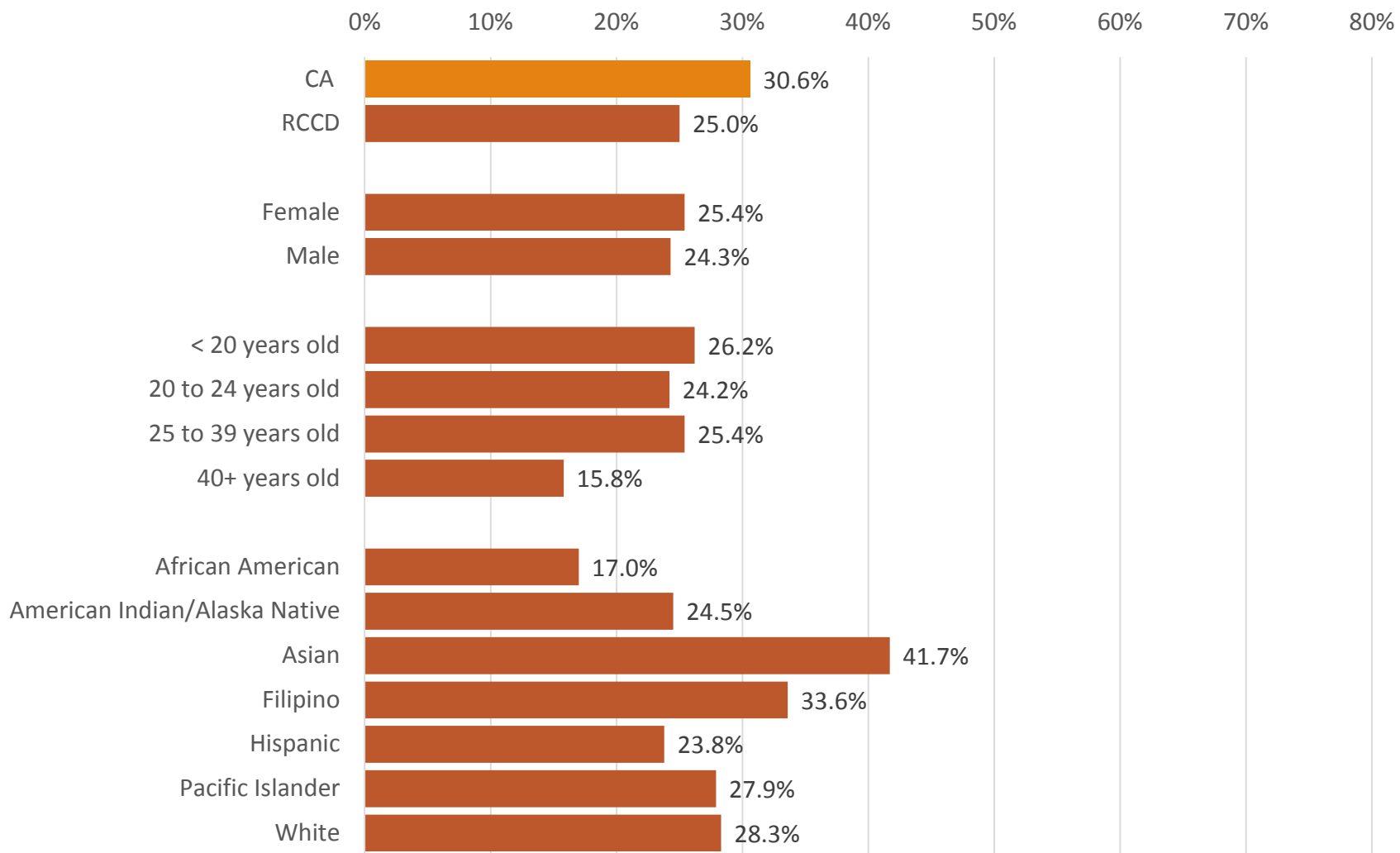


Remedial Math Momentum Point: State, District and College Rates

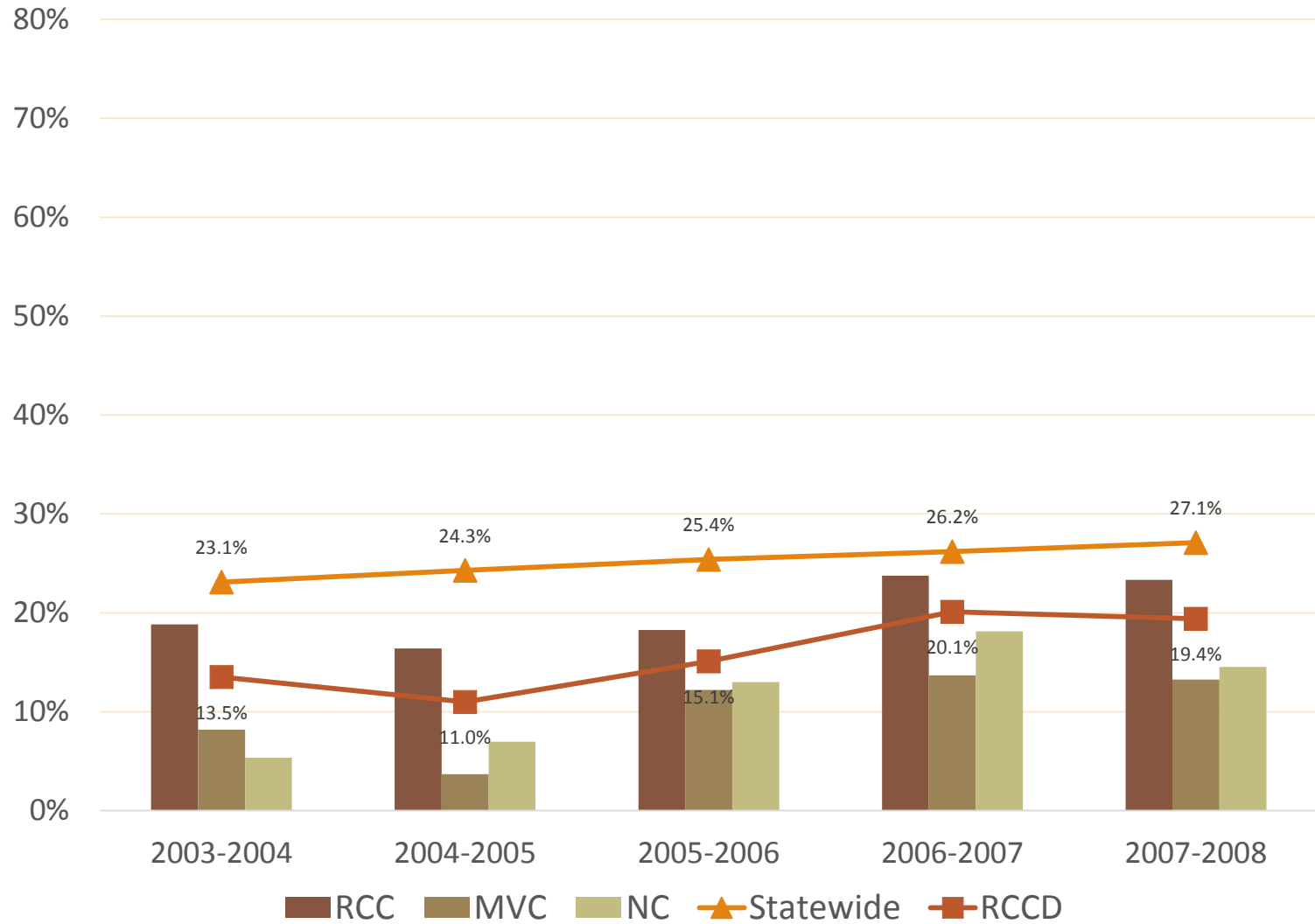


■ RCC ■ MVC ■ NC ▲ Statewide ■ RCCD

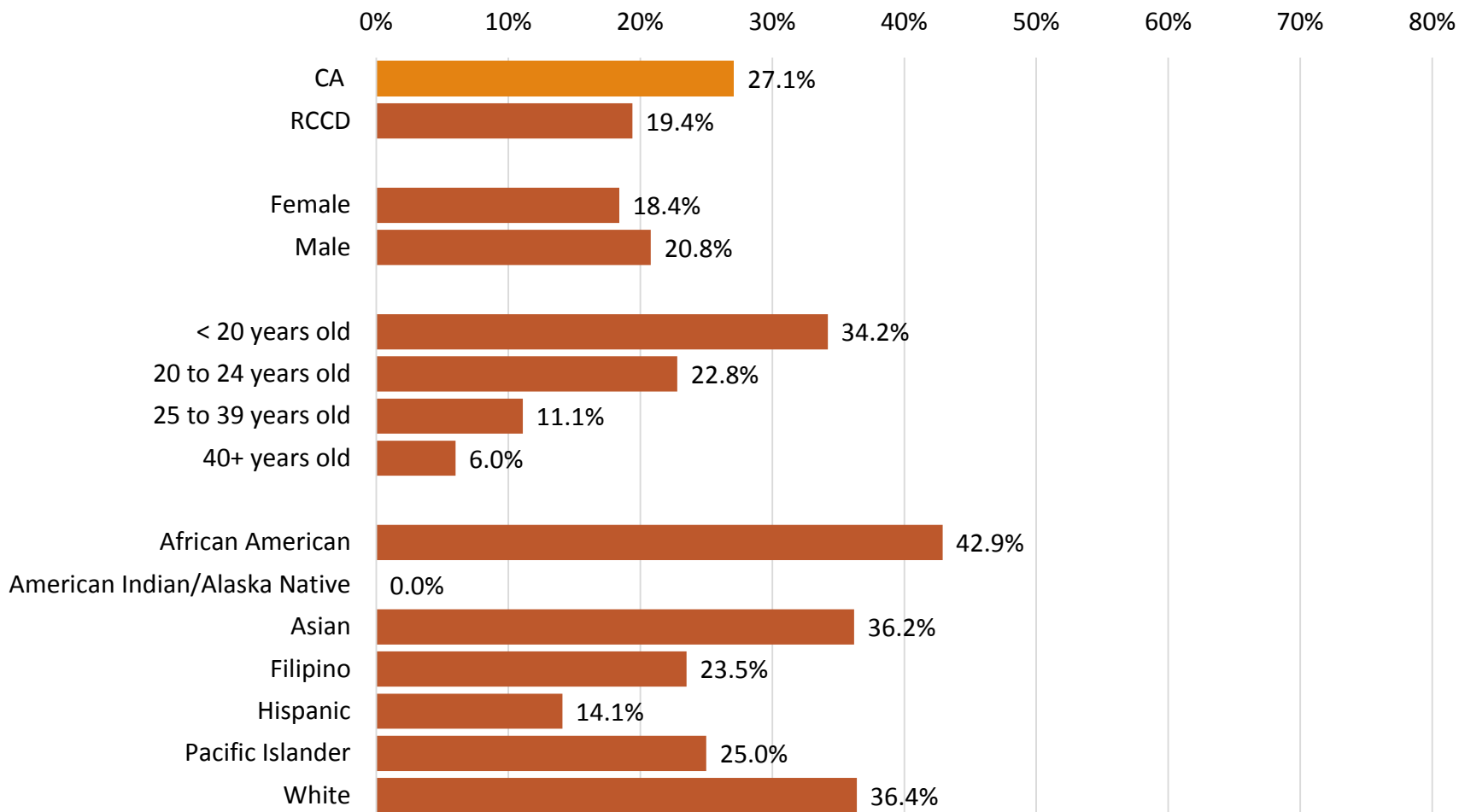
Remedial Math Momentum Point: District Sub-Group Rates, Most Recent Cohort



Remedial ESL Momentum Point: State, District and College Rates



Remedial ESL Momentum Point: District Sub-Group Rates, Most Recent Cohort



Note: Cohorts for African American, American Indian / Native American and Pacific Islander had fewer than 10 students.

Summary and Next Steps...

- For all measures, RCCD had lower achievement rates compared to California overall.
- Distinct gaps exist for Awards and Transfers, Career and Technical Education Completion and English as a Second Language.
- Hispanic students (our largest student population) were among the lower ethnic subgroups for many measures.
- Data provided to college and district researchers and should be further analyzed to determine patterns contributing to success.

2014 Student Success Scorecard:

Riverside Community College District and College Rates

END OF SLIDE SHOW

