

California



Comply Anywhere Poster Pack

*A digital compliance solution for all of your
state and federal labor law postings.*

TABLE OF CONTENTS

Use any corner to navigate forward or backward



Federal Panels

- 3 Minimum Wage
- 4 Employee Polygraph Protection Act
- 5 Equal Employment Opportunity
- 7 USERRA - Uniformed Services Employment and Reemployment Rights Act
- 8 FMLA - Family and Medical Leave Act
- 9 IRS Notices 797 and 1015 - Withholding and Federal Earned Income Tax Credit
- 10 OSHA "It's the Law" Notice
- 11 E-Verify
- 12 USCIS - Anti-Discrimination Notice
- 13 Right to Work Notice

Federal Contractor Panels

- 14 NLRA - Employee Rights Under the National Labor Relations Act
- 15 Employee Rights on Government Contracts
- 17 Minimum Wage for Federal Contractors
- 19 Pay Transparency Non-Discrimination Provision
- 20 Paid Sick Leave for Federal Contractors

State Panels

- 21 Minimum Wage
- 22 Discrimination and Harassment
- 24 Sexual Harassment
- 26 CAL/OSHA Safety and Health Protection on the Job
- 28 Annual Summary of Work-Related Injuries & Illnesses
- 29 EDD Unemployment, Disability, Paid Family Leave
- 30 Employees Unemployment Insurance Benefits
- 31 Workers' Compensation Notice
- 32 Whistleblowers Protection
- 33 Right to Vote Notice
- 34 Your Rights and Obligations as a Pregnant Employee (5 or more employees)
- 35 Family Care and Medical Leave and Pregnancy Disability Leave (50 or more employees)
- 36 Emergency Numbers
- 37 Payday Notice
- 38 Paid Sick Leave
- 39 Transgender Rights in the Workplace

Conditional Panels

- 40 Additional Notices

Employee Notice – Your Rights Are Protected

The Federal Government and the State of California have established laws and regulations that protect the rights of employees. As your employer, we are conspicuously posting the information that is required by the Federal Government and the State of California to better inform you of your rights as an employee of our company. If you should have any questions regarding these postings, please contact the personnel office or your immediate supervisor.

Note: *The Comply Anywhere Poster (CAP) Pack is designed to provide accurate and authoritative information in regard to the subject matter covered. Businesses with one or more employees are required to comply with federal, state and/or local law notification and posting requirements. CAP will not satisfy all labor law posting and notification requirements that must be posted conspicuously in a location frequented by employees at a business. CAPs should be used only as a supplementary product when space is limited.*



Item #CA-CAP-DF
© 2014-2023 AIO Acquisition, Inc.

Click  in the bar below to return to the Table of Contents at any time

EMPLOYEE RIGHTS UNDER THE FAIR LABOR STANDARDS ACT

FEDERAL MINIMUM WAGE

\$7.25

 PER HOUR

BEGINNING JULY 24, 2009

The law requires employers to display this poster where employees can readily see it.

OVERTIME PAY At least 1½ times the regular rate of pay for all hours worked over 40 in a workweek.

CHILD LABOR An employee must be at least 16 years old to work in most non-farm jobs and at least 18 to work in non-farm jobs declared hazardous by the Secretary of Labor. Youths 14 and 15 years old may work outside school hours in various non-manufacturing, non-mining, non-hazardous jobs with certain work hours restrictions. Different rules apply in agricultural employment.

TIP CREDIT Employers of “tipped employees” who meet certain conditions may claim a partial wage credit based on tips received by their employees. Employers must pay tipped employees a cash wage of at least \$2.13 per hour if they claim a tip credit against their minimum wage obligation. If an employee’s tips combined with the employer’s cash wage of at least \$2.13 per hour do not equal the minimum hourly wage, the employer must make up the difference.

PUMP AT WORK The FLSA requires employers to provide reasonable break time for a nursing employee to express breast milk for their nursing child for one year after the child’s birth each time the employee needs to express breast milk. Employers must provide a place, other than a bathroom, that is shielded from view and free from intrusion from coworkers and the public, which may be used by the employee to express breast milk.

ENFORCEMENT The Department has authority to recover back wages and an equal amount in liquidated damages in instances of minimum wage, overtime, and other violations. The Department may litigate and/or recommend criminal prosecution. Employers may be assessed civil money penalties for each willful or repeated violation of the minimum wage or overtime pay provisions of the law. Civil money penalties may also be assessed for violations of the FLSA’s child labor provisions. Heightened civil money penalties may be assessed for each child labor violation that results in the death or serious injury of any minor employee, and such assessments may be doubled when the violations are determined to be willful or repeated. The law also prohibits retaliating against or discharging workers who file a complaint or participate in any proceeding under the FLSA.

ADDITIONAL INFORMATION

- Certain occupations and establishments are exempt from the minimum wage, and/or overtime pay provisions. Certain narrow exemptions also apply to the pump at work requirements.
- Special provisions apply to workers in American Samoa, the Commonwealth of the Northern Mariana Islands, and the Commonwealth of Puerto Rico.
- Some state laws provide greater employee protections; employers must comply with both.
- Some employers incorrectly classify workers as “independent contractors” when they are actually employees under the FLSA. It is important to know the difference between the two because employees (unless exempt) are entitled to the FLSA’s minimum wage and overtime pay protections and correctly classified independent contractors are not.
- Certain full-time students, student learners, apprentices, and workers with disabilities may be paid less than the minimum wage under special certificates issued by the Department of Labor.



WAGE AND HOUR DIVISION
UNITED STATES DEPARTMENT OF LABOR

1-866-487-9243
www.dol.gov/agencies/whd



WH1088 REV 04/23

EMPLOYEE RIGHTS

EMPLOYEE POLYGRAPH PROTECTION ACT

The Employee Polygraph Protection Act prohibits most private employers from using lie detector tests either for pre-employment screening or during the course of employment.

PROHIBITIONS Employers are generally prohibited from requiring or requesting any employee or job applicant to take a lie detector test, and from discharging, disciplining, or discriminating against an employee or prospective employee for refusing to take a test or for exercising other rights under the Act.

EXEMPTIONS Federal, State and local governments are not affected by the law. Also, the law does not apply to tests given by the Federal Government to certain private individuals engaged in national security-related activities.

The Act permits polygraph (a kind of lie detector) tests to be administered in the private sector, subject to restrictions, to certain prospective employees of security service firms (armored car, alarm, and guard), and of pharmaceutical manufacturers, distributors and dispensers.

The Act also permits polygraph testing, subject to restrictions, of certain employees of private firms who are reasonably suspected of involvement in a workplace incident (theft, embezzlement, etc.) that resulted in economic loss to the employer.

The law does not preempt any provision of any State or local law or any collective bargaining agreement which is more restrictive with respect to lie detector tests.

EXAMINEE RIGHTS Where polygraph tests are permitted, they are subject to numerous strict standards concerning the conduct and length of the test. Examinees have a number of specific rights, including the right to a written notice before testing, the right to refuse or discontinue a test, and the right not to have test results disclosed to unauthorized persons.

ENFORCEMENT The Secretary of Labor may bring court actions to restrain violations and assess civil penalties against violators. Employees or job applicants may also bring their own court actions.

THE LAW REQUIRES EMPLOYERS TO DISPLAY THIS POSTER WHERE EMPLOYEES AND JOB APPLICANTS CAN READILY SEE IT.



WAGE AND HOUR DIVISION
UNITED STATES DEPARTMENT OF LABOR

1-866-487-9243
www.dol.gov/agencies/whd



WH1462 REV 02/22



Know Your Rights: Workplace Discrimination is Illegal

The U.S. Equal Employment Opportunity Commission (EEOC) enforces Federal laws that protect you from discrimination in employment. If you believe you've been discriminated against at work or in applying for a job, the EEOC may be able to help.

Who is Protected?

- Employees (current and former), including managers and temporary employees
- Job applicants
- Union members and applicants for membership in a union

What Organizations are Covered?

- Most private employers
- State and local governments (as employers)
- Educational institutions (as employers)
- Unions
- Staffing agencies

What Types of Employment Discrimination are Illegal?

Under the EEOC's laws, an employer may not discriminate against you, regardless of your immigration status, on the bases of:

- Race
- Color
- Religion
- National origin
- Sex (including pregnancy, childbirth, and related medical conditions, sexual orientation, or gender identity)
- Age (40 and older)
- Disability
- Genetic information (including employer requests for, or purchase, use, or disclosure of genetic tests, genetic services, or family medical history)
- Retaliation for filing a charge, reasonably opposing discrimination, or participating in a discrimination lawsuit, investigation, or proceeding
- Interference, coercion, or threats related to exercising rights regarding disability discrimination or pregnancy accommodation

What Employment Practices can be Challenged as Discriminatory?

All aspects of employment, including:

- Discharge, firing, or lay-off
- Harassment (including unwelcome verbal or physical conduct)
- Hiring or promotion
- Assignment
- Pay (unequal wages or compensation)
- Failure to provide reasonable accommodation for a disability; pregnancy, childbirth, or related medical condition; or a sincerely-held religious belief, observance or practice
- Benefits
- Job training
- Classification
- Referral
- Obtaining or disclosing genetic information of employees
- Requesting or disclosing medical information of employees
- Conduct that might reasonably discourage someone from opposing discrimination, filing a charge, or participating in an investigation or proceeding
- Conduct that coerces, intimidates, threatens, or interferes with someone exercising their rights, or someone assisting or encouraging someone else to exercise rights, regarding disability discrimination (including accommodation) or pregnancy accommodation

What can You Do if You Believe Discrimination has Occurred?

Contact the EEOC promptly if you suspect discrimination. Do not delay, because there are strict time limits for filing a charge of discrimination (180 or 300 days, depending on where you live/work). You can reach the EEOC in any of the following ways:

Submit an inquiry through the EEOC's public portal:
<https://publicportal.eeoc.gov/Portal/Login.aspx>

Call 1-800-669-4000 (toll free)
1-800-669-6820 (TTY)
1-844-234-5122 (ASL video phone)

Visit an EEOC field office (information at www.eeoc.gov/field-office)

E-Mail info@eeoc.gov

Additional information about the EEOC, including information about filing a charge of discrimination, is available at www.eeoc.gov.



EMPLOYERS HOLDING FEDERAL CONTRACTS OR SUBCONTRACTS

The Department of Labor's Office of Federal Contract Compliance Programs (OFCCP) enforces the nondiscrimination and affirmative action commitments of companies doing business with the Federal Government. If you are applying for a job with, or are an employee of, a company with a Federal contract or subcontract, you are protected under Federal law from discrimination on the following bases:

Race, Color, Religion, Sex, Sexual Orientation, Gender Identity, National Origin

Executive Order 11246, as amended, prohibits employment discrimination by Federal contractors based on race, color, religion, sex, sexual orientation, gender identity, or national origin, and requires affirmative action to ensure equality of opportunity in all aspects of employment.

Asking About, Disclosing, or Discussing Pay

Executive Order 11246, as amended, protects applicants and employees of Federal contractors from discrimination based on inquiring about, disclosing, or discussing their compensation or the compensation of other applicants or employees.

Disability

Section 503 of the Rehabilitation Act of 1973, as amended, protects qualified individuals with disabilities from discrimination in hiring, promotion, discharge, pay, fringe benefits, job training, classification, referral, and other aspects of employment by Federal contractors. Disability discrimination includes not making reasonable accommodation to the known physical or mental limitations of an otherwise qualified individual with a disability who is an applicant or employee, barring undue hardship to the employer. Section 503 also requires that Federal contractors take affirmative action to employ and advance in employment qualified individuals with disabilities at all levels of employment, including the executive level.

Protected Veteran Status

The Vietnam Era Veterans' Readjustment Assistance Act of 1974, as amended, 38 U.S.C. 4212, prohibits employment discrimination against, and requires affirmative action to recruit, employ, and advance in employment, disabled veterans, recently separated veterans (i.e., within three years of discharge or release from active duty), active duty wartime or campaign badge veterans, or Armed Forces service medal veterans.

Retaliation

Retaliation is prohibited against a person who files a complaint of discrimination, participates in an OFCCP proceeding, or otherwise opposes discrimination by Federal contractors under these Federal laws.

Any person who believes a contractor has violated its nondiscrimination or affirmative action obligations under OFCCP's authorities should contact immediately:

The Office of Federal Contract Compliance Programs (OFCCP)
U.S. Department of Labor
200 Constitution Avenue, N.W.
Washington, D.C. 20210
1-800-397-6251 (toll-free)

If you are deaf, hard of hearing, or have a speech disability, please dial 7-1-1 to access telecommunications relay services. OFCCP may also be contacted by submitting a question online to OFCCP's Help Desk at <https://ofccphelpdesk.dol.gov/s/>, or by calling an OFCCP regional or district office, listed in most telephone directories under U.S. Government, Department of Labor and on OFCCP's "Contact Us" webpage at <https://www.dol.gov/agencies/ofccp/contact>.

PROGRAMS OR ACTIVITIES RECEIVING FEDERAL FINANCIAL ASSISTANCE

Race, Color, National Origin, Sex

In addition to the protections of Title VII of the Civil Rights Act of 1964, as amended, Title VI of the Civil Rights Act of 1964, as amended, prohibits discrimination on the basis of race, color or national origin in programs or activities receiving Federal financial assistance. Employment discrimination is covered by Title VI if the primary objective of the financial assistance is provision of employment, or where employment discrimination causes or may cause discrimination in providing services under such programs. Title IX of the Education Amendments of 1972 prohibits employment discrimination on the basis of sex in educational programs or activities which receive Federal financial assistance.

Individuals with Disabilities

Section 504 of the Rehabilitation Act of 1973, as amended, prohibits employment discrimination on the basis of disability in any program or activity which receives Federal financial assistance. Discrimination is prohibited in all aspects of employment against persons with disabilities who, with or without reasonable accommodation, can perform the essential functions of the job.

If you believe you have been discriminated against in a program of any institution which receives Federal financial assistance, you should immediately contact the Federal agency providing such assistance.

(Revised 6/27/2023)

FEDERAL PANELS



YOUR RIGHTS UNDER USERRA THE UNIFORMED SERVICES EMPLOYMENT AND REEMPLOYMENT RIGHTS ACT

USERRA protects the job rights of individuals who voluntarily or involuntarily leave employment positions to undertake military service or certain types of service in the National Disaster Medical System. USERRA also prohibits employers from discriminating against past and present members of the uniformed services, and applicants to the uniformed services.

REEMPLOYMENT RIGHTS

You have the right to be reemployed in your civilian job if you leave that job to perform service in the uniformed service and:

- ☆ you ensure that your employer receives advance written or verbal notice of your service;
- ☆ you have five years or less of cumulative service in the uniformed services while with that particular employer;
- ☆ you return to work or apply for reemployment in a timely manner after conclusion of service; and
- ☆ you have not been separated from service with a disqualifying discharge or under other than honorable conditions.

If you are eligible to be reemployed, you must be restored to the job and benefits you would have attained if you had not been absent due to military service or, in some cases, a comparable job.

RIGHT TO BE FREE FROM DISCRIMINATION AND RETALIATION

If you:

- ☆ are a past or present member of the uniformed service;
- ☆ have applied for membership in the uniformed service; or
- ☆ are obligated to serve in the uniformed service;

then an employer may not deny you:

- ☆ initial employment;
- ☆ reemployment;
- ☆ retention in employment;
- ☆ promotion; or
- ☆ any benefit of employment

because of this status.

In addition, an employer may not retaliate against anyone assisting in the enforcement of USERRA rights, including testifying or making a statement in connection with a proceeding under USERRA, even if that person has no service connection.

HEALTH INSURANCE PROTECTION

- ☆ If you leave your job to perform military service, you have the right to elect to continue your existing employer-based health plan coverage for you and your dependents for up to 24 months while in the military.
- ☆ Even if you don't elect to continue coverage during your military service, you have the right to be reinstated in your employer's health plan when you are reemployed, generally without any waiting periods or exclusions (e.g., pre-existing condition exclusions) except for service-connected illnesses or injuries.

ENFORCEMENT

- ☆ The U.S. Department of Labor, Veterans Employment and Training Service (VETS) is authorized to investigate and resolve complaints of USERRA violations.
- ☆ For assistance in filing a complaint, or for any other information on USERRA, contact VETS at 1-866-4-USA-DOL or visit its website at <https://www.dol.gov/agencies/vets/>. An interactive online USERRA Advisor can be viewed at <https://webapps.dol.gov/elaws/vets/userra>
- ☆ If you file a complaint with VETS and VETS is unable to resolve it, you may request that your case be referred to the Department of Justice or the Office of Special Counsel, as applicable, for representation.
- ☆ You may also bypass the VETS process and bring a civil action against an employer for violations of USERRA.

The rights listed here may vary depending on the circumstances. The text of this notice was prepared by VETS, and may be viewed on the internet at this address: <https://www.dol.gov/agencies/vets/programs/userra/poster> Federal law requires employers to notify employees of their rights under USERRA, and employers may meet this requirement by displaying the text of this notice where they customarily place notices for employees.



U.S. Department of Labor
1-866-487-2365



U.S. Department of Justice



Office of Special Counsel



1-800-336-4590

Publication Date — May 2022

Your Employee Rights Under the Family and Medical Leave Act

What is FMLA leave?

The Family and Medical Leave Act (FMLA) is a federal law that provides eligible employees with **job-protected leave** for qualifying family and medical reasons. The U.S. Department of Labor's Wage and Hour Division (WHD) enforces the FMLA for most employees.

Eligible employees can take **up to 12 workweeks** of FMLA leave in a 12-month period for:

- The birth, adoption or foster placement of a child with you,
- Your serious mental or physical health condition that makes you unable to work,
- To care for your spouse, child or parent with a serious mental or physical health condition, and
- Certain qualifying reasons related to the foreign deployment of your spouse, child or parent who is a military servicemember.

An eligible employee who is the spouse, child, parent or next of kin of a covered servicemember with a serious injury or illness **may take up to 26 workweeks** of FMLA leave in a single 12-month period to care for the servicemember.

You have the right to use FMLA leave in **one block of time**. When it is medically necessary or otherwise permitted, you may take FMLA leave **intermittently in separate blocks of time, or on a reduced schedule** by working less hours each day or week. Read Fact Sheet #28M(c) for more information.

FMLA leave is **not paid leave**, but you may choose, or be required by your employer, to use any employer-provided paid leave if your employer's paid leave policy covers the reason for which you need FMLA leave.

Am I eligible to take FMLA leave?

You are an **eligible employee** if **all** of the following apply:

- You work for a covered employer,
- You have worked for your employer at least 12 months,
- You have at least 1,250 hours of service for your employer during the 12 months before your leave, and
- Your employer has at least 50 employees within 75 miles of your work location.

Airline flight crew employees have different "hours of service" requirements.

You work for a **covered employer** if **one** of the following applies:

- You work for a private employer that had at least 50 employees during at least 20 workweeks in the current or previous calendar year,
- You work for an elementary or public or private secondary school, or
- You work for a public agency, such as a local, state or federal government agency. Most federal employees are covered by Title II of the FMLA, administered by the Office of Personnel Management.

How do I request FMLA leave?

Generally, **to request FMLA leave you must:**

- Follow your employer's normal policies for requesting leave,
- Give notice at least 30 days before your need for FMLA leave, or
- If advance notice is not possible, give notice as soon as possible.

You **do not have to share a medical diagnosis** but must provide enough information to your employer so they can determine whether the leave qualifies for FMLA protection. You **must also inform your employer if FMLA leave was previously taken** or approved for the same reason when requesting additional leave.

Your **employer may request certification** from a health care provider to verify medical leave and may request certification of a qualifying exigency.

The FMLA does not affect any federal or state law prohibiting discrimination or supersede any state or local law or collective bargaining agreement that provides greater family or medical leave rights.

State employees may be subject to certain limitations in pursuit of direct lawsuits regarding leave for their own serious health conditions. Most federal and certain congressional employees are also covered by the law but are subject to the jurisdiction of the U.S. Office of Personnel Management or Congress.

What does my employer need to do?

If you are eligible for FMLA leave, your **employer must:**

- Allow you to take job-protected time off work for a qualifying reason,
- Continue your group health plan coverage while you are on leave on the same basis as if you had not taken leave, and
- Allow you to return to the same job, or a virtually identical job with the same pay, benefits and other working conditions, including shift and location, at the end of your leave.

Your **employer cannot interfere with your FMLA rights** or threaten or punish you for exercising your rights under the law. For example, your employer cannot retaliate against you for requesting FMLA leave or cooperating with a WHD investigation.

After becoming aware that your need for leave is for a reason that may qualify under the FMLA, your **employer must confirm whether you are eligible** or not eligible for FMLA leave. If your employer determines that you are eligible, your **employer must notify you in writing:**

- About your FMLA rights and responsibilities, and
- How much of your requested leave, if any, will be FMLA-protected leave.

Where can I find more information?

Call **1-866-487-9243** or visit dol.gov/fmla to learn more.

If you believe your rights under the FMLA have been violated, you may file a complaint with WHD or file a private lawsuit against your employer in court. **Scan the QR code to learn about our WHD complaint process.**



WAGE AND HOUR DIVISION
UNITED STATES DEPARTMENT OF LABOR

SCAN ME





Department of the Treasury
Internal Revenue Service

Notice 797

(Rev. December 2022)

Possible Federal Tax Refund Due to the Earned Income Credit (EIC)

What Is the EIC?

The EIC is a refundable tax credit for certain workers.

What Is the Purpose of This Notice?

Your employer sent you this notice to make you aware of an important federal tax benefit. Even if you had no income tax withheld from your wages during the year, you may be eligible for the EIC.

How Much Is the EIC?

For 2022, the EIC can be as much as \$3,733 if you have one qualifying child who has a valid SSN; \$6,164 if you have two qualifying children who have valid SSNs; \$6,935 if you have three or more qualifying children who have valid SSNs; and \$560 if you have no qualifying children who have a valid SSN.

How Do You Claim the EIC?

To claim the EIC, you must:

1. Be eligible for the EIC, and
2. File a 2022 tax return (including Schedule EIC if you have a qualifying child).

To figure out if you are eligible, see Pub. 596 or visit [IRS.gov/EITC](https://www.irs.gov/EITC).

If eligible, you can claim the EIC to get a refund even if you had no tax withheld from your pay or owe no tax. For example, if you had no tax withheld in 2022 and owe no tax but are eligible for a credit of \$800, you must file a 2022 income tax return to get the \$800 refund.

Most people qualify for free tax preparation. If you earned less than \$73,000, you can file for free online at [IRS.gov/FreeFile](https://www.irs.gov/FreeFile). In addition, IRS-certified volunteers can prepare your return for free in person if you earned less than \$60,000 or are age 60 or older. To find locations, visit [IRS.gov/VITA](https://www.irs.gov/VITA) or call 800-906-9887.

More Information

Refer to instructions for the tax return you are filing, Pub. 596, or [IRS.gov/EITC](https://www.irs.gov/EITC) for details on the EIC. You can download IRS forms and publications at [IRS.gov/Forms](https://www.irs.gov/Forms), and you can get printed copies mailed to you by going to [IRS.gov/OrderForms](https://www.irs.gov/OrderForms) or by calling 800-829-3676.

Notice **797** (Rev. 12-2022)
Cat. No. 63924Z



Department of the Treasury
Internal Revenue Service

Notice 1015

(Rev. December 2022)

Have You Told Your Employees About the Earned Income Credit (EIC)?

What Is the EIC?

The EIC is a refundable tax credit for certain workers.

Which Employees Must I Notify About the EIC?

You must notify each employee who worked for you at any time during the year and from whose wages you did not withhold income tax. However, you do not have to notify any employee who claimed exemption from withholding on Form W-4, Employee's Withholding Certificate.

Note: You are encouraged to notify all employees whose wages for 2022 are less than \$59,187 that they may be eligible for the EIC.

How and When Must I Notify My Employees?

You must give the employee one of the following.

- The IRS Form W-2, Wage and Tax Statement, which has the required information about the EIC on the back of Copy B.
- A substitute Form W-2 with the same EIC information on the back of the employee's copy that is on Copy B of the IRS Form W-2.
- Notice 797, Possible Federal Tax Refund Due to the Earned Income Credit (EIC).
- Your written statement with the same wording as Notice 797.

If you give an employee a Form W-2 on time, no further notice is necessary if the Form W-2 has the required information about the EIC on the back of the employee's copy. If you give an employee a substitute Form W-2, but it does not have the required information, you must notify the employee within 1 week of the date the substitute Form W-2 is given. If Form W-2 is required but is not given on time, you must give the employee Notice 797 or your written statement by the date Form W-2 is required to be given. If Form W-2 is not required, you must notify the employee by February 6, 2023.

You must hand the notice directly to the employee or send it by first-class mail to the employee's last known address. You will not meet the notification requirements by posting Notice 797 on an employee bulletin board or sending it through office mail. However, you may want to post the notice to help inform all employees of the EIC. You can download copies of the notice at www.irs.gov/FormsPubs. Or you can go to www.irs.gov/OrderForms to order it.

How Will My Employees Know if They Can Claim the EIC?

The basic requirements are covered in Notice 797. For more detailed information, the employee needs to see Pub. 596, Earned Income Credit (EIC), or the Instructions for Forms 1040 and 1040-SR.

How Do My Employees Claim the EIC?

Eligible employees claim the EIC on their 2022 tax return. Even an employee who has no tax withheld from wages and owes no tax may claim the EIC and ask for a refund, but they must file a tax return to do so. For example, if an employee has no tax withheld in 2022 and owes no tax but is eligible for a credit of \$800, they must file a 2022 tax return to get the \$800 refund.

Notice **1015** (Rev. 12-2022)
Cat. No. 20599I



Job Safety and Health IT'S THE LAW!

All workers have the right to:

- A safe workplace.
- Raise a safety or health concern with your employer or OSHA, or report a work-related injury or illness, without being retaliated against.
- Receive information and training on job hazards, including all hazardous substances in your workplace.
- Request a confidential OSHA inspection of your workplace if you believe there are unsafe or unhealthy conditions. You have the right to have a representative contact OSHA on your behalf.
- Participate (or have your representative participate) in an OSHA inspection and speak in private to the inspector.
- File a complaint with OSHA within 30 days (by phone, online or by mail) if you have been retaliated against for using your rights.
- See any OSHA citations issued to your employer.
- Request copies of your medical records, tests that measure hazards in the workplace, and the workplace injury and illness log.

Employers must:

- Provide employees a workplace free from recognized hazards. It is illegal to retaliate against an employee for using any of their rights under the law, including raising a health and safety concern with you or with OSHA, or reporting a work-related injury or illness.
- Comply with all applicable OSHA standards.
- Notify OSHA within 8 hours of a workplace fatality or within 24 hours of any work-related inpatient hospitalization, amputation, or loss of an eye.
- Provide required training to all workers in a language and vocabulary they can understand.
- Prominently display this poster in the workplace.
- Post OSHA citations at or near the place of the alleged violations.

On-Site Consultation services are available to small and medium-sized employers, without citation or penalty, through OSHA-supported consultation programs in every state.

Contact OSHA. We can help.



1-800-321-OSHA (6742) • TTY 1-877-889-5627 • www.osha.gov

OSHA 315-OWP 2019

FEDERAL PANELS

Applicable to businesses that are required to or willingly participate in the Federal E-Verify program.

This Organization Participates in E-Verify

Sample Only

Esta Organización Participa en E-Verify

Sólo muestra



This employer participates in E-Verify and will provide the federal government with your Form I-9 information to confirm that you are authorized to work in the U.S.

If E-Verify cannot confirm that you are authorized to work, this employer is required to give you written instructions and an opportunity to contact Department of Homeland Security (DHS) or Social Security Administration (SSA) so you can begin to resolve the issue before the employer can take any action against you, including terminating your employment.

Employers can only use E-Verify once you have accepted a job offer and completed the Form I-9.

E-Verify Works for Everyone

For more information on E-Verify, or if you believe that your employer has violated its E-Verify responsibilities, please contact DHS.

Este empleador participa en E-Verify y proporcionará al gobierno federal la información de su Formulario I-9 para confirmar que usted está autorizado para trabajar en los EE.UU..

Si E-Verify no puede confirmar que usted está autorizado para trabajar, este empleador está requerido a darle instrucciones por escrito y una oportunidad de contactar al Departamento de Seguridad Nacional (DHS) o a la Administración del Seguro Social (SSA) para que pueda empezar a resolver el problema antes de que el empleador pueda tomar cualquier acción en su contra, incluyendo la terminación de su empleo.

Los empleadores sólo pueden utilizar E-Verify una vez que usted haya aceptado una oferta de trabajo y completado el Formulario I-9.

E-Verify Funciona Para Todos

Para más información sobre E-Verify, o si usted cree que su empleador ha violado sus responsabilidades de E-Verify, por favor contacte a DHS.

888-897-7781

E-Verify.gov



E-VERIFY IS A SERVICE OF DHS AND SSA

The E-Verify logo and mark are registered trademarks of Department of Homeland Security. Commercial sale of this poster is strictly prohibited.

English / Spanish Poster



THE AMERICAN POLICY IS OUR POLICY.

Anti-Discrimination Notice.

It is illegal to discriminate against work-authorized individuals.

Employers CANNOT specify which document(s) an employee may present to establish employment authorization and identity.

The refusal to hire or continue to employ an individual because the documentation presented has a future expiration date may also constitute illegal discrimination.

If you think discrimination has occurred, call the Immigrant and Employee Rights Section at 1-800-255-7688.

FEDERAL PANELS

Applicable to businesses that are required to or willingly participate in the Federal E-Verify program.

IF YOU HAVE THE RIGHT TO WORK



DON'T LET ANYONE TAKE IT AWAY

If you have the skills, experience, and legal right to work, your citizenship or immigration status shouldn't get in the way. Neither should the place you were born or another aspect of your national origin. A part of U.S. immigration laws protects legally-authorized workers from discrimination based on their citizenship status and national origin. You can read this law at [8 U.S.C. § 1324b](#).

The Immigrant and Employee Rights Section (IER) may be able to help if an employer treats you unfairly in violation of this law.

The law that IER enforces is 8 U.S.C. § 1324b. The regulations for this law are at 28 C.F.R. Part 44.

Call IER if an employer:

Does not hire you or fires you because of your national origin or citizenship status (this may violate a part of the law at 8 U.S.C. § 1324b(a)(1))

Treats you unfairly while checking your right to work in the U.S., including while completing the [Form I-9](#) or using [E-Verify](#) (this may violate the law at 8 U.S.C. § 1324b(a)(1) or (a)(6))

Retaliates against you because you are speaking up for your right to work as protected by this law (the law prohibits retaliation at 8 U.S.C. § 1324b(a)(5))

The law can be complicated. Call IER to get more information on protections from discrimination based on citizenship status and national origin.

Immigrant and Employee Rights Section (IER)

1-800-255-7688

TTY 1-800-237-2515

www.justice.gov/ier

IER@usdoj.gov



U.S. Department of Justice, Civil Rights Division, Immigrant and Employee Rights Section, January 2019

This guidance document is not intended to be a final agency action, has no legally binding effect, and has no force or effect of law. The document may be rescinded or modified at the Department's discretion, in accordance with applicable laws. The Department's guidance documents, including this guidance, do not establish legally enforceable responsibilities beyond what is required by the terms of the applicable statutes, regulations, or binding judicial precedent. For more information, see "Memorandum for All Components: Prohibition of Improper Guidance Documents," from Attorney General Jefferson B. Sessions III, November 16, 2017.



EMPLOYEE RIGHTS

UNDER THE NATIONAL LABOR RELATIONS ACT

The NLRA guarantees the right of employees to organize and bargain collectively with their employers, and to engage in other protected concerted activity. Employees covered by the NLRA* are protected from certain types of employer and union misconduct. This Notice gives you general information about your rights, and about the obligations of employers and unions under the NLRA. Contact the National Labor Relations Board, the Federal agency that investigates and resolves complaints under the NLRA, using the contact information supplied below, if you have any questions about specific rights that may apply in your particular workplace.

Under the NLRA, you have the right to:

- **Organize a union** to negotiate with your employer concerning your wages, hours, and other terms and conditions of employment.
- **Form, join or assist a union.**
- **Bargain collectively** through representatives of employees' own choosing for a contract with your employer setting your wages, benefits, hours, and other working conditions.
- **Discuss your terms and conditions of employment** or union organizing with your co-workers or a union.
- **Take action** with one or more co-workers to improve your working conditions by, among other means, raising work-related complaints directly with your employer or with a government agency, and seeking help from a union.
- **Strike and picket**, depending on the purpose or means of the strike or the picketing.
- **Choose not to do any of these activities**, including joining or remaining a member of a union.

Illegal conduct will not be permitted. If you believe your rights or the rights of others have been violated, you should contact the NLRB promptly to protect your rights, generally within six months of the unlawful activity. You may inquire about possible violations without your employer or anyone else being informed of the inquiry. Charges may be filed by any person and need not be filed by the employee directly affected by the violation. The NLRB may order an employer to rehire a worker fired in violation of the law and to pay lost wages and benefits, and may order an employer or union to cease violating the law. Employees should seek assistance from the nearest regional NLRB office, which can be found on the Agency's website: www.nlrb.gov.



Under the NLRA, it is illegal for a union or for the union that represents you in bargaining with your employer to:

- **Threaten** you that you will lose your job unless you support the union.
- **Refuse to process a grievance** because you have criticized union officials or because you are not a member of the union.
- **Use or maintain discriminatory standards or procedures** in making job referrals from a hiring hall.
- **Cause or attempt to cause an employer to discriminate against you** because of your union-related activity.
- **Take other adverse action against you** based on whether you have joined or support the union.

If you and your coworkers select a union to act as your collective bargaining representative, your employer and the union are required to bargain in good faith in a genuine effort to reach a written, binding agreement setting your terms and conditions of employment. The union is required to fairly represent you in bargaining and enforcing the agreement.

You can also contact the NLRB by calling toll-free: 1-844-762-NLRB (6572). Language assistance is available. Hearing impaired callers who wish to speak to an NLRB representative should send an email to relay.service@nlrb.gov. An NLRB representative will email the requestor with instructions on how to schedule a relay service call.



Under the NLRA, it is illegal for your employer to:

- **Prohibit you from soliciting for a union during non-work time**, such as before or after work or during break times; or from distributing union literature during non-work time, in non-work areas, such as parking lots or break rooms.
- **Question you about your union support or activities** in a manner that discourages you from engaging in that activity.
- **Fire, demote, or transfer you, or reduce your hours or change your shift**, or otherwise take adverse action against you, or threaten to take any of these actions, because you join or support a union, or because you engage in concerted activity for mutual aid and protection, or because you choose not to engage in any such activity.
- **Threaten to close your workplace** if workers choose a union to represent them.
- **Promise or grant promotions, pay raises, or other benefits** to discourage or encourage union support.
- **Prohibit you from wearing union hats, buttons, t-shirts, and pins in the workplace** except under special circumstances.
- **Spy on or videotape peaceful union activities** and gatherings or pretend to do so.

*The National Labor Relations Act covers most private-sector employers. Excluded from coverage under the NLRA are public-sector employees, agricultural and domestic workers, independent contractors, workers employed by a parent or spouse, employees of air and rail carriers covered by the Railway Labor Act, and supervisors (although supervisors that have been discriminated against for refusing to violate the NLRA may be covered).

EMPLOYEE RIGHTS ON GOVERNMENT CONTRACTS

THIS ESTABLISHMENT IS PERFORMING GOVERNMENT CONTRACT WORK SUBJECT TO:
(CHECK ONE)

- SERVICE CONTRACT ACT (SCA)
- PUBLIC CONTRACTS ACT (PCA)

MINIMUM WAGES

Your rate must be no less than the federal minimum wage established by the Fair Labor Standards Act (FLSA).

A higher rate may be required for SCA contracts if a wage determination applies. Such wage determination will be posted as an attachment to this notice.

FRINGE BENEFITS

SCA wage determinations may require fringe benefit payments (or a cash equivalent). PCA contracts do not require fringe benefits.

OVERTIME PAY

You must be paid 1.5 times your basic rate of pay for all hours worked over 40 in a week. There are some exceptions.

CHILD LABOR

No person under 16 years of age may be employed on a PCA contract.

SAFETY & HEALTH

Work must be performed under conditions that are sanitary, and not hazardous or dangerous to employees' health and safety.

ENFORCEMENT

Specific DOL agencies are responsible for the administration of these laws. To file a complaint or obtain information, contact the **Wage and Hour Division (WHD)** by calling its toll-free help line at 1-866-4-USWAGE (1-866-487-9243), or visit www.dol.gov/whd

Contact the **Occupational Safety and Health Administration (OSHA)** by calling 1-800-321-OSHA (1-800-321-6742), or visit www.osha.gov



WAGE AND HOUR DIVISION
UNITED STATES DEPARTMENT OF LABOR

1-866-487-9243
TTY: 1-877-889-5627
www.dol.gov/whd



WH1313 REV 04/09
page 1 of 2

U.S. DEPARTMENT OF LABOR

The purpose of the discussion below is to advise contractors which are subject to the Walsh-Healey Public Contracts Act or the Service Contract Act of the principal provisions of these acts.

WALSH-HEALEY PUBLIC CONTRACTS ACT

General Provisions—This act applies to contracts which exceed or may exceed \$10,000 entered into by any agency or instrumentality of the United States for the manufacture or furnishing of materials, supplies, articles, or equipment. The act establishes minimum wage, maximum hours, and safety and health standards for work on such contracts, and prohibits the employment on contract work of convict labor (unless certain conditions are met) and children under 16 years of age. The employment of homeworkers (except homeworkers with disabilities employed under the provisions of Regulations, 29 CFR Part 525) on a covered contract is not permitted.

In addition to its coverage of prime contractors, the act under certain circumstances applies to secondary contractors performing work under contracts awarded by the Government prime contractor.

All provisions of the act except the safety and health requirements are administered by the Wage and Hour Division.

Minimum Wage—Covered employees must currently be paid not less than the Federal minimum wage established in section 6(a)(1) of the Fair Labor Standards Act.

Overtime—Covered workers must be paid at least one and one-half times their basic rate of pay for all hours worked in excess of 40 a week. Overtime is due on the basis of the total hours spent in all work, Government and non-Government, performed by the employee in any week in which covered work is performed.

Child Labor—Employers may protect themselves against unintentional child labor violations by obtaining certificates of age. State employment or age certificates are acceptable.

Safety and Health—No covered work may be performed in plants, factories, buildings, or surroundings or under work conditions that are unsanitary or hazardous or dangerous to the health and safety of the employees engaged in the performance of the contract. The safety and health provisions of the Walsh-Healey Public Contracts Act are administered by the Occupational Safety and Health Administration.

Posting—During the period that covered work is being performed on a contract subject to the act, the contractor must post copies of Notice to Employees Working on Government Contracts in a sufficient number of places to permit employees to observe a copy on the way to or from their place of employment.

Responsibility for Secondary Contractors—Prime contractors are liable for violations of the act committed by their covered secondary contractors.

SERVICE CONTRACT ACT

General Provisions—The Service Contract Act applies to every contract entered into by the United States or the District of Columbia, the principal purpose of which is to furnish services in the United States through the use of service employees. Contractors and subcontractors performing on such Federal contracts must observe minimum wage and safety and health standards, and must maintain certain records, unless a specific exemption applies.

Wages and Fringe Benefits—Every service employee performing any of the Government contract work under a service contract in excess of \$2,500 must be paid not less than the monetary wages, and must be furnished the fringe benefits, which the Secretary of Labor has determined to be prevailing in the locality for the classification in which the employee is working or the wage rates and fringe benefits (including any accrued or prospective wage rates and fringe benefits) contained in a predecessor contractor's collective bargaining agreement. The wage rates and fringe benefits required are usually specified in the contract but in no case may employees doing work necessary for the performance of the contract be paid less than the minimum wage established in section 6(a)(1) of the Fair Labor Standards Act. Service contracts which do not exceed \$2,500 are not subject to prevailing rate determinations or to the safety and health requirements of the act. However, the act does require that employees performing work on such contracts be paid not less than the minimum wage rate established in section 6(a)(1) of the Fair Labor Standards Act.

Overtime—The Fair Labor Standards Act and the Contract Work Hours Safety Standards Act may require the payment of overtime at time and one-half the regular rate of pay for all hours work on the contract in excess of 40 a week. The Contract Work Hours Safety Standards Act is more limited in scope than the Fair Labor Standards Act and generally applies to Government contracts in excess of \$100,000 that require or involve the employment of laborers, mechanics, guards, watchmen.

Safety and Health—The act provides that no part of the services in contracts in excess of \$2,500 may be performed in buildings or surroundings or under working conditions, provided by or under the control or supervision of the contractor or subcontractor, which are unsanitary or hazardous or dangerous to the health or safety of service employees engaged to furnish the services. The safety and health provisions of the Service Contract Act are administered by the Occupational Safety and Health Administration.

Notice to Employees—On the date a service employee commences work on a contract in excess of \$2,500, the contractor (or subcontractor) must provide the employee with a notice of the compensation required by the act. The posting of the notice (including any applicable wage determination) contained on the reverse in a location where it may be seen by all employees performing on the contract will satisfy this requirement.

Notice in Subcontracts—The contractor is required to insert in all subcontracts the labor standards clauses specified by the regulations in 29 CFR Part 4 for Federal service contracts exceeding \$2,500.

Responsibility for Secondary Contractors—Prime contractors are liable for violations of the act committed by their covered secondary contractors.

Other Obligations—Observance of the labor standards of these acts does not relieve the employer of any obligation he may have under any other laws or agreements providing for higher labor standards.

Additional Information—Additional Information and copies of the acts and applicable regulations and interpretations may be obtained from the nearest office of the Wage and Hour Division or the national office in Washington, D.C. Information pertaining to safety and health standards may be obtained from the nearest office of the Occupational Safety and Health Administration or the national office in Washington, D.C.

WORKER RIGHTS UNDER EXECUTIVE ORDER 13658

FEDERAL MINIMUM WAGE FOR CONTRACTORS

\$12.15 PER HOUR

EFFECTIVE JANUARY 1, 2023 – DECEMBER 31, 2023

The law requires certain federal contractors to display this poster where employees can easily see it.

- MINIMUM WAGE** Federal construction and service contracts are generally subject to a minimum wage rate under either Executive Order (EO) 13658 or EO 14026.
- If the contract was entered into on or between January 1, 2015, and January 29, 2022, EO 13658 generally requires that workers be paid at least \$12.15 per hour for all time spent performing on or in connection with the contract in calendar year 2023.
 - If the contract is renewed or extended on or after January 30, 2022, or a new contract is entered into on or after January 30, 2022, EO 14026 generally requires that workers be paid at least \$16.20 per hour for all time spent performing on or in connection with the contract in calendar year 2023.
- EXCLUSIONS**
- The EO minimum wage may not apply to some workers who provide support in connection with covered federal contracts for less than 20 percent of their hours worked in a week.
 - The EO minimum wage may not apply to certain other occupations and workers.
- ENFORCEMENT**
- The U.S. Department of Labor’s Wage and Hour Division (WHD) is responsible for enforcing this law. WHD can answer questions about your workplace rights and protections, investigate employers, and recover back wages. All WHD services are free and confidential. Employers cannot retaliate or discriminate against someone who files a complaint or participates in an investigation. WHD will accept a complaint in any language. You can find your nearest WHD office online at www.dol.gov/agencies/whd/contact/local-offices or by calling toll-free 866-4US-WAGE (866-487-9243). We do not ask workers about their immigration status. **We can help.**
- ADDITIONAL INFORMATION**
- Workers with disabilities must be paid at least the EO minimum wage rate for time spent performing on or in connection with covered contracts.
 - Some state or local laws may provide greater worker protections and employers must follow the law that requires the highest rate of pay.
 - More information about the EO minimum wage is available online at www.dol.gov/agencies/whd/government-contracts/minimum-wage



WAGE AND HOUR DIVISION
UNITED STATES DEPARTMENT OF LABOR

866-487-9243
www.dol.gov/agencies/whd



WH1089 REV 11/22

WORKER RIGHTS UNDER EXECUTIVE ORDER 14026

FEDERAL MINIMUM WAGE FOR CONTRACTORS

\$16.20 PER HOUR

EFFECTIVE JANUARY 1, 2023 – DECEMBER 31, 2023

The law requires certain federal contractors to display this poster where employees can easily see it.

MINIMUM WAGE

Executive Order 14026 (EO) requires that federal contractors pay workers performing work on or in connection with covered contracts at least (1) \$15.00 per hour beginning January 30, 2022, and (2) beginning January 1, 2023, and every year thereafter, an inflation-adjusted amount determined by the Secretary of Labor in accordance with the EO and appropriate regulations. The EO hourly minimum wage in effect from January 1, 2023, through December 31, 2023, is \$16.20.

TIPS

Covered tipped employees must be paid a cash wage of at least \$13.75 per hour effective January 1, 2023, through December 31, 2023. If a worker's tips combined with the required cash wage of at least \$13.75 per hour paid by the contractor do not equal the EO hourly minimum wage for contractors, the contractor must increase the cash wage paid to make up the difference. Certain other conditions must also be met.

EXCLUSIONS

- The EO minimum wage may not apply to some workers who provide support “in connection with” covered contracts for less than 20 percent of their hours worked in a week.
- The EO minimum wage may not apply to certain other occupations and workers.

ENFORCEMENT

The U.S. Department of Labor’s Wage and Hour Division (WHD) is responsible for enforcing this law. WHD can answer questions about your workplace rights and protections, investigate employers, and recover back wages. All WHD services are free and confidential. Employers cannot retaliate or discriminate against someone who files a complaint or participates in an investigation. WHD will accept a complaint in any language. You can find your nearest WHD office online at www.dol.gov/agencies/whd/contact/local-offices or by calling toll-free 866-4US-WAGE (866-487-9243). We do not ask workers about their immigration status. **We can help.**

ADDITIONAL INFORMATION

- The EO applies only to new federal construction and service contracts, as defined by the Secretary in the regulations at 29 CFR part 23.
- Workers with disabilities whose wages are governed by special certificates issued under section 14(c) of the Fair Labor Standards Act must also receive no less than the full EO minimum wage rate.
- Some state or local laws may provide greater worker protections; employers must follow the law that requires the highest rate of pay.
- More information about the EO is available online at www.dol.gov/agencies/whd/government-contracts/eo14026



WAGE AND HOUR DIVISION
UNITED STATES DEPARTMENT OF LABOR

1-866-487-9243
www.dol.gov/agencies/whd



WH1091 REV 11/22

PAY TRANSPARENCY NONDISCRIMINATION PROVISION

The contractor will not discharge or in any other manner discriminate against employees or applicants because they have inquired about, discussed, or disclosed their own pay or the pay of another employee or applicant. However, employees who have access to the compensation information of other employees or applicants as a part of their essential job functions cannot disclose the pay of other employees or applicants to individuals who do not otherwise have access to compensation information, unless the disclosure is (a) in response to a formal complaint or charge, (b) in furtherance of an investigation, proceeding, hearing, or action, including an investigation conducted by the employer, or (c) consistent with the contractor's legal duty to furnish information. 41 CFR 60-1.35(c)

If you believe that you have experienced discrimination contact OFCCP
1.800.397.6251 | TTY 1.877.889.5627 | www.dol.gov/ofccp



200 CONSTITUTION AVENUE NW | WASHINGTON, DC 20210 | tel: 1-800-397-6251 | TTY: 1-877-889-5627 | www.dol.gov/ofccp

WORKER RIGHTS UNDER EXECUTIVE ORDER 13706

PAID SICK LEAVE FOR FEDERAL CONTRACTORS

ONE HOUR OF PAID SICK LEAVE FOR EVERY 30 HOURS WORKED, UP TO 56 HOURS EACH YEAR

PAID SICK LEAVE Executive Order 13706, Establishing Paid Sick Leave for Federal Contractors, requires certain employers that contract with the Federal Government to provide employees working on or in connection with those contracts with 1 hour of paid sick leave for every 30 hours they work—up to 56 hours of paid sick leave each year.

Employees must be permitted to use paid sick leave for their own illness, injury, or other health-related needs, including preventive care; to assist a family member who is ill, injured, or has other health-related needs, including preventive care; or for reasons resulting from, or to assist a family member who is the victim of, domestic violence, sexual assault, or stalking.

Employers are required to inform employees of their paid sick leave balances and must approve all valid requests to use paid sick leave. Rules about when and how employees should ask to use paid sick leave also apply. More information about the paid sick leave requirements is available at www.dol.gov/whd/govcontracts/eo13706

ENFORCEMENT The Wage and Hour Division (WHD), which is responsible for making sure employers comply with Executive Order 13706, has offices across the country. WHD can answer questions, in person or by telephone, about your workplace rights and protections. WHD can investigate employers and recover wages to which workers may be entitled. All services are free and confidential. If you are unable to file a complaint in English, WHD will accept the complaint in any language.

The law prohibits discriminating against or discharging workers who file a complaint or participate in any proceeding under the Executive Order.

ADDITIONAL INFORMATION Executive Order 13706 applies to new contracts and replacements for expiring contracts with the Federal Government starting January 1, 2017. It applies to federal contracts for construction and many types of federal contracts for services.

Some state and local laws also require that employees be provided with paid sick leave. Employers must comply with all applicable requirements.



WAGE AND HOUR DIVISION
UNITED STATES DEPARTMENT OF LABOR www.dol.gov/whd/govcontracts

1-866-487-9243

TTY: 1-877-889-5627



WH1090 REV 09/16

STATE PANELS

PLEASE POST NEXT TO YOUR IWC INDUSTRY OR OCCUPATION ORDER

OFFICIAL NOTICE

Amends General
Minimum Wage
Order and IWC
Industry and
Occupation Orders

California Minimum Wage



MW-2024

Every employer, regardless of the number of employees, shall pay to each employee wages not less than the following:

Effective January 1, 2024 Minimum Wage: \$16.00 per hour *See Sec. 2 below
Effective January 1, 2023 Minimum Wage: \$15.50 per hour

PREVIOUS YEARS

EFFECTIVE DATE	Employers with 25 or Fewer Employees*	Employers with 26 or More Employees *
January 1, 2022	\$14.00	\$15.00
January 1, 2021	\$13.00	\$14.00

*Employees treated as employed by a single qualified taxpayer pursuant to Revenue and Taxation Code section 23626 are treated as employees of that single taxpayer. To employers and representatives of persons working in industries and occupations in the State of California:

SUMMARY OF ACTIONS

TAKE NOTICE that on April 4, 2016, the Governor of California signed legislation passed by the California Legislature, raising the minimum wage for all industries. (SB 3, Stats. of 2016, amending section 1182.12. of the California Labor Code.) and, in 2023, raised the minimum wage payable by certain Fast Food Restaurant employers (AB 1228, Stats. 2023) and Healthcare Facility employers (SB 525, Stats. 2023). Pursuant to its authority under Labor Code section 1182.13, the Department of Industrial Relations amends and republishes Sections 2, 3, and 5 of the General Minimum Wage Order, MW-2024. Section 1, Applicability, and Section 4, Separability, have not been changed. Consistent with these enactments, amendments are made to the minimum wage, and the meals and lodging credits sections of all of the IWC's industry and occupation orders.

This summary must be made available to employees in accordance with the IWC's wage orders. Copies of the full text of the amended wage orders may be obtained by downloading online at <https://www.dir.ca.gov/iwc/WageOrderIndustries.htm> or by contacting your local Division of Labor Standards Enforcement office.

1. APPLICABILITY

The provisions of this Order shall not apply to outside salespersons and individuals who are the parent, spouse, or children of the employer previously contained in this Order and the IWC's industry and occupation orders. Exceptions and modifications provided by statute or in Section 1, Applicability, and in other sections of the IWC's industry and occupation orders may be used where such provisions are enforceable and applicable to the employer.

2. MINIMUM WAGES

Every employer shall pay to each employee wages not less than those stated above, on each effective date, per hour for all hours worked, except the following who shall pay no less than the specified minimum wage to each employee: Fast Food Restaurant employers under Part 4.5.5, of Division 2 of the Labor Code (commencing with Labor Code section 1474), effective April 1, 2024; and Healthcare Facility employers under Labor Code section 1182.14, effective June 1, 2024. Note: A supplement to this order is forthcoming.

3. MEALS AND LODGING CREDITS - TABLE

When credit for meals or lodging is used to meet part of the employer's minimum wage obligation, the amounts so credited pursuant to a voluntary written agreement may not be more than the following:

EFFECTIVE:	JANUARY 1, 2021		JANUARY 1, 2022		JANUARY 1, 2023	January 1, 2024
For an employer who employs:	26 or More Employees	25 or Fewer Employees	26 or More Employees	25 or Fewer Employees	All Employers regardless of number of Employees	All Employers regardless of number of Employees
LODGING						
Room occupied alone	\$65.83 /week	\$61.13 /week	\$70.53 /week	\$65.83 /week	\$72.88 /week	\$75.23 /week
Room shared	\$54.34 /week	\$50.46 /week	\$58.22 /week	\$54.34 /week	\$60.16 /week	\$62.10 /week
Apartment – two thirds (2/3) of the ordinary rental value, and in no event more than:	\$790.67 /month	\$734.21 /month	\$847.12 /month	\$790.67 /month	\$875.33 /month	\$903.60 /month
Where a couple are both employed by the employer, two thirds (2/3) of the ordinary rental value, and in no event more than:	\$1,169.59 /month	\$1,086.07 /month	\$1,253.10 /month	\$1,169.59 /month	\$1,294.83 /month	\$1,336.65 /month
Breakfast	\$5.06	\$4.70	\$5.42	\$5.06	\$5.60	\$5.78
Lunch	\$6.97	\$6.47	\$7.47	\$6.97	\$7.72	\$7.97
Dinner	\$9.35	\$8.68	\$10.02	\$9.35	\$10.35	\$10.68

Meals or lodging may not be credited against the minimum wage without a voluntary written agreement between the employer and the employee. When credit for meals or lodging is used to meet part of the employer's minimum wage obligation, the amounts so credited may not be more than the amounts stated in the table above.

4. SEPARABILITY

If the application of any provision of this Order, or any section, subsection, subdivision, sentence, clause, phrase, word or portion of this Order should be held invalid, unconstitutional, unauthorized, or prohibited by statute, the remaining provisions thereof shall not be affected thereby, but shall continue to be given full force and effect as if the part so held invalid or unconstitutional had not been included herein.

5. AMENDED PROVISIONS

This Order amends the minimum wage and meals and lodging credits in MW-2023, as well as in the IWC's industry and occupation orders. (See Orders 1-15, Secs. 4 and 10; and Order 16, Secs. 4 and 9.) This Order makes no other changes to the IWC's industry and occupation orders.

These Amendments to the Wage Orders shall be in effect as of January 1, 2024.

Questions about enforcement should be directed to the Labor Commissioner's Office. For the address and telephone number of the office nearest you, information can be found on the internet at www.dir.ca.gov/DLSE/dlse.html or under a search for "California Labor Commissioner's Office" on the internet or any other directory. The Labor Commissioner has offices in the following cities: Bakersfield, El Centro, Fresno, Long Beach, Los Angeles, Oakland, Redding, Sacramento, Salinas, San Bernardino, San Diego, San Francisco, San Jose, Santa Ana, Santa Barbara, Santa Rosa, Stockton, and Van Nuys.



Civil Rights
Department
STATE OF CALIFORNIA

CALIFORNIA LAW PROHIBITS WORKPLACE DISCRIMINATION & HARASSMENT

The California Civil Rights Department (CRD) enforces laws that protect you from illegal discrimination and harassment in employment based on your actual or perceived:

- ANCESTRY
- AGE (40 and above)
- COLOR
- DISABILITY (physical, developmental, mental health/psychiatric, HIV and AIDS)
- GENETIC INFORMATION
- GENDER EXPRESSION
- GENDER IDENTITY
- MARITAL STATUS
- MEDICAL CONDITION (genetic characteristics, cancer, or a record or history of cancer)
- MILITARY OR VETERAN STATUS
- NATIONAL ORIGIN (includes language restrictions and possession of a driver's license issued to undocumented immigrants)
- RACE (includes hair texture and hairstyles)
- RELIGION (includes religious dress and grooming practices)
- REPRODUCTIVE HEALTH DECISIONMAKING
- SEX/GENDER (includes pregnancy, childbirth, breastfeeding and/or related medical conditions)
- SEXUAL ORIENTATION



THE CALIFORNIA FAIR EMPLOYMENT AND HOUSING ACT AND ITS IMPLEMENTING REGULATIONS PROTECT CIVIL RIGHTS AT WORK.

HARASSMENT

1. The law prohibits harassment of employees, applicants, unpaid interns, volunteers, and independent contractors by any person. This includes a prohibition against harassment based on any characteristic listed above, such as sexual harassment, gender harassment, and harassment based on pregnancy, childbirth, breastfeeding, and/or related medical conditions.
2. All employers are required to take reasonable steps to prevent all forms of harassment, as well as provide information to each of their employees on the nature, illegality, and legal remedies that apply to sexual harassment.
3. Employers with 5 or more employees and public employers must train their employees regarding the prevention of sexual harassment, including harassment based on gender identity, gender expression, and sexual orientation.

DISCRIMINATION/REASONABLE ACCOMODATIONS

1. California law prohibits employers with 5 or more employees and public employers from discriminating based on any protected characteristic listed above when making decisions about hiring, promotion, pay, benefits, terms of employment, layoffs, and other aspects of employment.
2. Employers cannot limit or prohibit the use of any language in any workplace unless justified by business necessity. The employer must notify employees of the language restriction and consequences for violation.
3. Employers cannot discriminate against an applicant or employee because they possess a California driver's license or ID issued to an undocumented person.
4. Employers must reasonably accommodate the religious beliefs and practices of an employee, unpaid intern, or job applicant, including the wearing or carrying of religious clothing, jewelry or artifacts, and hair styles, facial hair, or body hair, which are part of an individual's observance of their religious beliefs.
5. Employers must reasonably accommodate an employee or job applicant with a disability to enable them to perform the essential functions of a job.

ADDITIONAL PROTECTIONS

1. The law provides specific protections and hiring procedures for people with criminal histories who are looking for employment.
2. Employers with 5 or more employees and public employers must provide up to 12 weeks of job-protected leave to eligible employees: to care for themselves, a family member (child of any age, spouse, domestic partner, parent, parent-in-law, grandparent, grandchild, sibling) or a designated person (with a blood or family-like relationship to employee); to bond with a new child; or for certain military exigencies.

3. Employers must provide job-protected leave of up to 4 months to employees disabled because of pregnancy, childbirth, or a related medical condition, as well as require employers to reasonably accommodate an employee, on the advice of their health care provider, related to their pregnancy, childbirth, or a related medical condition.
4. Employers, employment agencies, and unions must preserve applications, personnel records, and employment referral records for a minimum of four years.
5. Employment agencies must serve all applicants equally, refuse discriminatory job orders, and prohibit employers and employment agencies from making discriminatory pre-hiring inquiries or publishing help-wanted advertisements that express a discriminatory hiring preference.
6. Unions cannot discriminate in member admissions or dispatching members to jobs.
7. The law prohibits retaliation against a person who opposes, reports, or assists another person to oppose unlawful discrimination, including filing an internal complaint or a complaint with CRD.

REMEDIES/FILING A COMPLAINT

1. The law provides remedies for individuals who experience prohibited discrimination, harassment, or retaliation in the workplace. These remedies can include hiring, front pay, back pay, promotion, reinstatement, cease-and-desist orders, expert witness fees, reasonable attorney's fees and costs, punitive damages, and emotional distress damages.
2. If you believe you have experienced discrimination, harassment, or retaliation, you may file a complaint with CRD. Independent contractors and volunteers: If you believe you have been harassed, you may file a complaint with CRD.
3. Complaints must be filed within three years of the last act of discrimination/harassment/retaliation. For those who are under the age of eighteen, complaints must be filed within three years after the last act of discrimination/harassment/retaliation or one year after their eighteenth birthday, whichever is later.

If you have been subjected to discrimination, harassment, or retaliation at work, file a complaint with the Civil Rights Department (CRD).

TO FILE A COMPLAINT

Civil Rights Department
calcivilrights.ca.gov/complaintprocess
Toll Free: 800.884.1684 / TTY: 800.700.2320
California Relay Service (711)

Have a disability that requires a reasonable accommodation? CRD can assist you with your complaint.

The Fair Employment and Housing Act is codified at Government Code sections 12900 - 12999. The regulations implementing the Act are at Code of Regulations, title 2, division 4.1

Government Code section 12950 and California Code of Regulations, title 2, section 11023, require all employers to post this document. It must be conspicuously posted in hiring offices, on employee bulletin boards, in employment agency waiting rooms, union halls, and other places employees gather. Any employer whose workforce at any facility or establishment consists of more than 10% of non-English speaking persons must also post this notice in the appropriate language or languages.



Civil Rights
Department
STATE OF CALIFORNIA

SEXUAL HARASSMENT

THE FACTS

Sexual harassment is a form of discrimination based on sex/gender (including pregnancy, childbirth, or related medical conditions), gender identity, gender expression, or sexual orientation. Individuals of any gender can be the target of sexual harassment. Unlawful sexual harassment does not have to be motivated by sexual desire. Sexual harassment may involve harassment by a person of the same gender, regardless of either person's sexual orientation or gender identity.

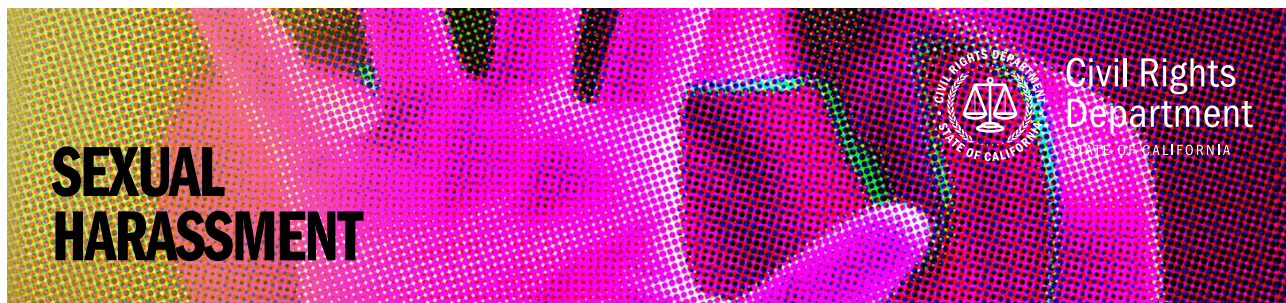
THERE ARE TWO TYPES OF SEXUAL HARASSMENT

1. *"Quid pro quo"* (Latin for "this for that") sexual harassment is when someone conditions a job, promotion, or other work benefit on your submission to sexual advances or other conduct based on sex.
2. *"Hostile work environment"* sexual harassment occurs when unwelcome comments or conduct based on sex unreasonably interferes with your work performance or creates an intimidating, hostile, or offensive work environment. You may experience sexual harassment even if the offensive conduct was not aimed directly at you.

The harassment must be severe or pervasive to be unlawful. A single act of harassment may be sufficiently severe to be unlawful.

BEHAVIORS THAT MAY BE SEXUAL HARASSMENT

1. Unwanted sexual advances
2. Offering employment benefits in exchange for sexual favors
3. Leering; gestures; or displaying sexually suggestive objects, pictures, cartoons, or posters
4. Derogatory comments, epithets, slurs, or jokes
5. Graphic comments, sexually degrading words, or suggestive or obscene messages or invitations
6. Physical touching or assault, as well as impeding or blocking movements



Actual or threatened retaliation for rejecting advances or complaining about harassment is also unlawful.

Employees or job applicants who believe that they have been sexually harassed or retaliated against may file a complaint of discrimination with CRD within three years of the last act of harassment or retaliation. CRD serves as a neutral fact-finder and attempts to help the parties voluntarily resolve disputes.

If CRD finds sufficient evidence to establish that discrimination occurred and settlement efforts fail, the Department may file a civil complaint in state or federal court to address the causes of the discrimination and on behalf of the complaining party. CRD may seek court orders changing the employer's policies and practices, punitive damages, and attorney's fees and costs if it prevails in litigation. Employees can also pursue the matter through a private lawsuit in civil court after a complaint has been filed with CRD and a Right-to-Sue Notice has been issued.

EMPLOYER RESPONSIBILITY & LIABILITY

All employers, regardless of the number of employees, are covered by the harassment provisions of California law. Employers are liable for harassment by their supervisor or agents. Employees accused of harassment, including both supervisory and non-supervisory personnel, may be held personally liable for harassment or for aiding and abetting harassment. The law requires employers to take reasonable steps to prevent harassment. If an employer fails to take such steps, that employer can be held liable for the harassment. In addition, an employer may be liable for the harassment by a non-employee (for example, a client or customer) of an employee, applicant, or person providing services for the employer. An employer will only be liable for this form of harassment if it knew or should have known of the harassment, and failed to take immediate and appropriate corrective action.

Employers have an affirmative duty to take reasonable steps to prevent and promptly correct discriminatory and harassing conduct, and to create a workplace free of harassment.

A program to eliminate sexual harassment from the workplace is not only required by law, but it is the most practical way for an employer to avoid or limit liability if harassment occurs.

ALL EMPLOYERS MUST TAKE THE FOLLOWING ACTIONS TO PREVENT HARASSMENT AND CORRECT IT WHEN IT OCCURS:

1. Distribute copies of this document or an alternative writing that complies with Government Code 12950. This document may be duplicated in any quantity.
2. Post a copy of the CRD employment poster "California Law Prohibits Workplace Discrimination and Harassment."
3. Develop a harassment, discrimination, and retaliation prevention policy in accordance with 2 CCR 11023.

The policy must:

- Be in writing.
- List all protected groups under the FEHA.
- Indicate that the law prohibits coworkers and third parties, as well as supervisors and managers with whom the employee comes into contact, from engaging in prohibited harassment.
- Create a complaint process that ensures confidentiality to the extent possible; a timely response; an impartial and timely investigation by qualified personnel; documentation and tracking for reasonable progress; appropriate options for remedial actions and resolutions; and timely closures.
- Provide a complaint mechanism that does not require an employee to complain directly to their immediate supervisor.
- That complaint mechanism must include, but is not limited to including: provisions for direct communication, either orally or in writing, with a designated company representative; and / or a complaint hotline; and / or access to an ombudsperson; and /

or identification of CRD and the United States Equal Employment Opportunity Commission as additional avenues for employees to lodge complaints.

- Instruct supervisors to report any complaints of misconduct to a designated company representative, such as a human resources manager, so that the company can try to resolve the claim internally. Employers with 50 or more employees are required to include this as a topic in mandated sexual harassment prevention training (see 2 CCR 11024).
 - Indicate that when the employer receives allegations of misconduct, it will conduct a fair, timely, and thorough investigation that provides all parties appropriate due process and reaches reasonable conclusions based on the evidence collected.
 - Make clear that employees shall not be retaliated against as a result of making a complaint or participating in an investigation.
4. Distribute its harassment, discrimination, and retaliation prevention policy by doing one or more of the following:
 - Printing the policy and providing a copy to employees with an acknowledgment form for employees to sign and return.
 - Sending the policy via email with an acknowledgment return form.
 - Posting the current version of the policy on a company intranet with a tracking system to ensure all employees have read and acknowledged receipt of the policy.
 - Discussing policies upon hire and/or during a new hire orientation.
 - Using any other method that ensures employees received and understand the policy.
 5. If the employer's workforce at any facility or establishment contains ten percent or more of persons who speak a language other than English as their spoken language, that employer shall translate the harassment, discrimination, and retaliation policy into every language spoken by at least ten percent of the workforce.
 6. In addition, employers who do business in California and employ 5 or more part-time or full-time employees must provide at least one hour of training regarding the prevention of sexual harassment, including harassment based on gender identity, gender expression, and sexual orientation, to each non-supervisory employee; and two hours of such training to each supervisory employee. All employees must be trained by January 1, 2023. New supervisory employees must be trained within six months of assuming their supervisory position, and new non-supervisory employees must be trained within six months of hire. Employees must be retrained once every two years. Please see Gov. Code 12950.1 and 2 CCR 11024 for further information.

CIVIL REMEDIES

1. Damages for emotional distress from each employer or person in violation of the law
2. Hiring or reinstatement
3. Back pay or promotion
4. Changes in the policies or practices of the employer

To schedule an appointment, contact the Communication Center below. If you have a disability that requires a reasonable accommodation, the CRD can assist you by scribing your intake by phone or, for individuals who are Deaf or Hard of Hearing or have speech disabilities, through the California Relay Service (711), or you can contact us below.

TO FILE A COMPLAINT

Civil Rights Department
calcivilrights.ca.gov/complaintprocess
Toll Free: 800.884.1684 / TTY: 800.700.2320
California Relay Service (711)

Have a disability that requires a reasonable accommodation?
CRD can assist you with your complaint.

SAFETY AND HEALTH PROTECTION ON THE JOB

State of California
Department of Industrial Relations



California law provides workplace safety and health protections for workers through regulations enforced by the Division of Occupational Safety and Health (Cal/OSHA). This poster explains some basic requirements and procedures to comply with the state's workplace safety and health standards and orders. The law requires that this poster be displayed. Failure to do so could result in a substantial penalty. Cal/OSHA standards can be found at www.dir.ca.gov/samples/search/query.htm.

WHAT AN EMPLOYER MUST DO:

All employers must provide work and workplaces that are safe and healthful. In other words, as an employer, you must follow state laws governing job safety and health. Failure to do so can result in a threat to the life or health of workers, and substantial monetary penalties.

You must display this poster in a conspicuous place where notices to employees are customarily posted so everyone on the job can be aware of basic rights and responsibilities.

You must have a written and effective Injury and Illness Prevention Program (IIPP) meeting the requirements of California Code of Regulations, title 8, section 3203 (www.dir.ca.gov/title8/3203.html) and provide access to employees and their designated representatives.

You must be aware of hazards your employees face on the job and keep records showing that each employee has been trained in the hazards unique to each job assignment.

You must correct any hazardous condition that you know may result in injury to employees. Failure to do so could result in criminal charges, monetary penalties, and even incarceration.

You must notify a local Cal/OSHA district office of any serious injury or illness, or death, occurring on the job. Be sure to do this immediately after calling for emergency help to assist the injured employee. Failure to report a serious injury or illness, or death, within 8 hours can result in a minimum civil penalty of \$5,000.

WHAT AN EMPLOYER MUST NEVER DO:

Never permit an employee to do work that violates Cal/OSHA workplace safety and health regulations.

Never permit an employee to be exposed to harmful substances without providing adequate protection.

Never allow an untrained employee to perform hazardous work.

EMPLOYEES HAVE CERTAIN WORKPLACE SAFETY & HEALTH RIGHTS:

As an employee, you (or someone acting for you) have the right to file a confidential complaint and request an inspection of your workplace if you believe conditions there are unsafe or unhealthful. This is done by contacting the local Cal/OSHA district office (see below). Your name is not revealed by Cal/OSHA, unless you request otherwise.

You also have the right to bring unsafe or unhealthful conditions to the attention of the Cal/OSHA investigator inspecting your workplace.

You and your designated representative have the right to access the employer's IIPP. Any employee has the right to refuse to perform work that would violate an occupational safety or health standard or order where such violation would create a real and apparent hazard to the employee or other employees.

You may not be fired or punished in any way for filing a complaint about unsafe or unhealthful working conditions, or for otherwise exercising your rights to a safe and healthful workplace. If you feel that you have been fired or punished for exercising your rights, you may file a complaint about this type of discrimination by contacting the nearest office of the California Department of Industrial Relations, Division of Labor Standards Enforcement (Labor Commissioner's Office) or the San Francisco office of the U.S. Department of Labor, Occupational Safety and Health Administration. (Employees of state or local government agencies may only file these complaints with the California Labor Commissioner's Office.) Consult your local telephone directory for the office nearest you.

EMPLOYEES ALSO HAVE RESPONSIBILITIES:

To keep the workplace and your coworkers safe, you should tell your employer about any hazard that could result in an injury or illness to an employee. While working, you must always obey state workplace safety and health laws.

HELP IS AVAILABLE:

To learn more about workplace safety rules, you may contact Cal/OSHA Consultation Services for free information, required forms, and publications. You can also contact a local district office of Cal/OSHA. If you prefer, you may retain a competent private consultant, or ask your workers' compensation insurance carrier for guidance in obtaining information.

SPECIAL RULES APPLY FOR WORK AROUND HAZARDOUS SUBSTANCES:

Employers who use any substance that is listed as a hazardous substance in California Code of Regulations, title 8, section 339 (www.dir.ca.gov/title8/339.html), or is covered by the Hazard Communication standard (www.dir.ca.gov/title8/5194.html) must provide employees information on the hazardous chemicals in their work areas, access to safety data sheets, and training on how to use hazardous chemicals safely.

Employers shall make available on a timely and reasonable basis a safety data sheet on each hazardous substance in the workplace upon request of an employee, an employee's collective bargaining representative, or an employee's physician.

Employees have the right to see and copy their medical records and records of exposure to potentially toxic materials or harmful physical agents.

Employers must allow access by employees or their representatives to accurate records of employee exposures to potentially toxic materials or harmful physical agents, and notify employees of any exposures in concentration or levels exceeding the exposure limits allowed by Cal/OSHA standards.

Any employee or their representative has the right to observe monitoring or measuring of employee exposure to hazards conducted to comply with Cal/OSHA regulations.

WHEN CAL/OSHA COMES TO THE WORKPLACE:

A trained Cal/OSHA safety engineer or industrial hygienist may visit the workplace to make sure your company is obeying workplace safety and health laws.

Inspections are also conducted when an employee files a valid complaint with Cal/OSHA.

Cal/OSHA also goes on-site to the workplace to investigate a serious injury or illness, or fatality.

When an inspection begins, the Cal/OSHA investigator will show official identification.

The employer, or someone the employer chooses, will be given an opportunity to accompany the investigator during the inspection. An authorized representative of the employees will be given the same opportunity. Where there is no authorized employee representative, the investigator will talk to a reasonable number of employees about safety and health conditions at the workplace.

VIOLATIONS, CITATIONS, AND PENALTIES:

If the investigation shows that the employer has violated a safety and health standard or order, Cal/OSHA may issue a citation. Each citation carries a monetary penalty and specifies a date by which the violation must be abated. A notice, which carries no monetary penalty, may be issued in lieu of a citation for certain non-serious violations.

Penalty amounts depend in part on the classification of the violation as regulatory, general, serious, repeat, or willful; and whether the employer failed to abate a previous violation involving the same hazardous condition. Base penalty amounts, penalty adjustment factors, and minimum and maximum penalty amounts are set forth in California Code of Regulations, title 8, section 336 (www.dir.ca.gov/title8/336.html). In addition, a willful violation that causes death or permanent impairment of the body of any employee can result, upon conviction, in a fine of up to \$250,000 or imprisonment up to three years, or both, and if the employer is a corporation or limited liability company, the fine may be up to \$1.5 million.

The law provides that employers may appeal citations within 15 working days of receipt to the Occupational Safety and Health Appeals Board.

An employer who receives a citation, Order to Take Special Action, or Special Order must post it or a copy, including the enclosed multi-language employee notification, prominently at or near the place of the violation or unsafe condition for three working days, or until the unsafe condition is corrected, whichever is longer, to warn employees of danger that may exist there. Any employee may protest the time allowed for correction of the violation to the Division of Occupational Safety and Health or the Occupational Safety and Health Appeals Board.

Call the FREE Worker Information Helpline – (833) 579-0927

DIVISION OF OCCUPATIONAL SAFETY AND HEALTH (CAL/OSHA)

HEADQUARTERS: 1515 Clay Street, Ste. 1901, Oakland, CA 94612 – Telephone (510) 286-7000

District Offices

American Canyon	3419 Broadway St., Ste. H8, American Canyon 94503	(707) 649-3700
Bakersfield	7718 Meany Ave., Bakersfield 93308	(661) 588-6400
Foster City	1065 East Hillsdale Bl., Ste. 110, Foster City 94404	(650) 573-3812
Fremont	39141 Civic Center Dr., Ste. 310, Fremont 94538	(510) 794-2521
Fresno	2550 Mariposa St., Rm. 4000, Fresno 93721	(559) 445-5302
Long Beach	1500 Hughes Way, Suite C-201, Long Beach 90810	(424) 450-2630
Los Angeles	320 West Fourth St., Rm. 820, Los Angeles 90013	(213) 576-7451
Modesto	4206 Technology Dr., Ste. 3, Modesto 95356	(209) 545-7310
Monrovia	800 Royal Oaks Dr., Ste. 105, Monrovia 91016	(626) 239-0369
Oakland	1515 Clay St., Ste. 1303, Box 41, Oakland 94612	(510) 622-2916
Redding	381 Hemsted Dr., Redding 96002	(530) 224-4743
Sacramento	1750 Howe Ave., Ste. 430, Sacramento 95825	(916) 263-2800
San Bernardino	464 West Fourth St., Ste. 332, San Bernardino 92401	(909) 383-4321
San Diego	7575 Metropolitan Dr., Ste. 207, San Diego 92108	(619) 767-2280
San Francisco	455 Golden Gate Ave., Rm. 9516, San Francisco 94102	(415) 557-0100
Santa Ana	2 MacArthur Place, Ste. 720, Santa Ana 92707	(714) 558-4451
Van Nuys	6150 Van Nuys Blvd., Ste. 405, Van Nuys 91401	(818) 901-5403

Regional Offices

San Francisco	455 Golden Gate Ave., Rm 9516, San Francisco 94102	(415) 557-0300
Sacramento	1750 Howe Ave., Ste. 440, Sacramento 95825	(916) 263-2803
Santa Ana	2 MacArthur Place, Ste. 720, Santa Ana 92707	(714) 558-4300
Monrovia	800 Royal Oaks Dr., Ste. 105, Monrovia 91016	(626) 471-9122

Cal/OSHA Consultation Services

Field / Area Offices

•Fresno / Central Valley	2550 Mariposa Mall, Rm. 2005 Fresno 93721	(559) 445-6800
•La Palma / Los Angeles / Orange County	1 Centerpointe Dr., Ste. 150 La Palma 90623	(714) 562-5525
•Oakland/ Bay Area	1515 Clay St., Ste 1103 Oakland 94612	(510) 622-2891
•Sacramento / Northern CA	1750 Howe Ave., Ste. 490 Sacramento 95825	(916) 263-0704
•San Bernardino	464 West Fourth St., Ste. 339 San Bernardino 92401	(909) 383-4567
•San Diego / Imperial County	7575 Metropolitan Dr., Ste. 204 San Diego 92108	(619) 767-2060
•San Fernando Valley	6150 Van Nuys Blvd., Ste. 307 Van Nuys 91401	(818) 901-5754

Consultation Region Office

•Fresno	2550 Mariposa Mall, Rm. 3014 Fresno 93721	(559) 445-6800
---------	--	----------------

Enforcement of Cal/OSHA workplace safety and health standards is carried out by the Division of Occupational Safety and Health, under the California Department of Industrial Relations, which has primary responsibility for administering the Cal/OSHA program. Safety and health standards are promulgated by the Occupational Safety and Health Standards Board. Anyone desiring to register a complaint alleging inadequacy in the administration of the California Occupational Safety and Health Plan may do so by contacting the San Francisco Regional Office of the Occupational Safety and Health Administration (OSHA), U.S. Department of Labor Tel: (415) 625-2547. OSHA monitors the operation of state plans to assure that continued approval is merited.

November 2023

STATE PANELS

Cal/OSHA Form 300 (Rev. 7/2007) Appendix A
Log of Work-Related Injuries and Illnesses

Attention: This form contains information relating to employee health and must be used in a manner that protects the confidentiality of employees to the extent possible while the information is being used for occupational safety and health purposes. See [CCR Title 8 14300.29\(b\)\(6\)-\(10\)](#)

Year 20

 Department of Industrial Relations
 Division of Occupational Safety and Health

You must record information about every work-related death and about every work-related injury or illness that involves loss of consciousness, restricted work activity or job transfer, days away from work, or medical treatment beyond first aid. You must also record significant work-related injuries and illnesses that are diagnosed by a physician or licensed health care professional. You must also record work-related injuries and illnesses that meet any of the specific recording criteria listed in CCR Title 8 Section 14300.8 through 14300.12. Feel free to use two lines for a single case if you need to. You must complete an Injury and Illness Incident Report (Cal/OSHA Form 301) or equivalent form for each injury or illness recorded on this form. If you're not sure whether a case is recordable, call your local Cal/OSHA office for help.

Establishment name
 City State

Identify the person			Describe the case			Classify the case				Enter the number of days the injured or ill worker was:		Check the "Injury" column or choose one type of illness:					
(A) Case no.	(B) Employee's name	(C) Job title (e.g., Welder)	(D) Date of injury or onset of illness	(E) Where the event occurred (e.g., Loading dock north end)	(F) Describe injury or illness, parts of body affected, and object/substance that directly injured or made person ill (e.g., Second degree burns on right forearm from acetylene torch)	Using these four categories, check ONLY the most serious result for each case:				(K) Away from work days	(L) On job transfer or restriction days	(M)					
						(G) Death	(H) Days away from work	(I) Remained at work				(1) Injury	(2) Skin disorder	(3) Respiratory condition	(4) Poisoning	(5) Hearing loss	(6) All other illnesses
			month/day					Job transfer or restriction	Other recordable cases								
<input type="checkbox"/>	<input type="text"/>	<input type="text"/>	<input type="text"/>	<input type="text"/>	<input type="text"/>	<input type="checkbox"/>	<input type="checkbox"/>	<input type="checkbox"/>	<input type="checkbox"/>	<input type="checkbox"/>	<input type="checkbox"/>	<input type="checkbox"/>	<input type="checkbox"/>	<input type="checkbox"/>	<input type="checkbox"/>	<input type="checkbox"/>	<input type="checkbox"/>
<input type="checkbox"/>	<input type="text"/>	<input type="text"/>	<input type="text"/>	<input type="text"/>	<input type="text"/>	<input type="checkbox"/>	<input type="checkbox"/>	<input type="checkbox"/>	<input type="checkbox"/>	<input type="checkbox"/>	<input type="checkbox"/>	<input type="checkbox"/>	<input type="checkbox"/>	<input type="checkbox"/>	<input type="checkbox"/>	<input type="checkbox"/>	<input type="checkbox"/>
<input type="checkbox"/>	<input type="text"/>	<input type="text"/>	<input type="text"/>	<input type="text"/>	<input type="text"/>	<input type="checkbox"/>	<input type="checkbox"/>	<input type="checkbox"/>	<input type="checkbox"/>	<input type="checkbox"/>	<input type="checkbox"/>	<input type="checkbox"/>	<input type="checkbox"/>	<input type="checkbox"/>	<input type="checkbox"/>	<input type="checkbox"/>	<input type="checkbox"/>
<input type="checkbox"/>	<input type="text"/>	<input type="text"/>	<input type="text"/>	<input type="text"/>	<input type="text"/>	<input type="checkbox"/>	<input type="checkbox"/>	<input type="checkbox"/>	<input type="checkbox"/>	<input type="checkbox"/>	<input type="checkbox"/>	<input type="checkbox"/>	<input type="checkbox"/>	<input type="checkbox"/>	<input type="checkbox"/>	<input type="checkbox"/>	<input type="checkbox"/>
<input type="checkbox"/>	<input type="text"/>	<input type="text"/>	<input type="text"/>	<input type="text"/>	<input type="text"/>	<input type="checkbox"/>	<input type="checkbox"/>	<input type="checkbox"/>	<input type="checkbox"/>	<input type="checkbox"/>	<input type="checkbox"/>	<input type="checkbox"/>	<input type="checkbox"/>	<input type="checkbox"/>	<input type="checkbox"/>	<input type="checkbox"/>	<input type="checkbox"/>
<input type="checkbox"/>	<input type="text"/>	<input type="text"/>	<input type="text"/>	<input type="text"/>	<input type="text"/>	<input type="checkbox"/>	<input type="checkbox"/>	<input type="checkbox"/>	<input type="checkbox"/>	<input type="checkbox"/>	<input type="checkbox"/>	<input type="checkbox"/>	<input type="checkbox"/>	<input type="checkbox"/>	<input type="checkbox"/>	<input type="checkbox"/>	<input type="checkbox"/>
<input type="checkbox"/>	<input type="text"/>	<input type="text"/>	<input type="text"/>	<input type="text"/>	<input type="text"/>	<input type="checkbox"/>	<input type="checkbox"/>	<input type="checkbox"/>	<input type="checkbox"/>	<input type="checkbox"/>	<input type="checkbox"/>	<input type="checkbox"/>	<input type="checkbox"/>	<input type="checkbox"/>	<input type="checkbox"/>	<input type="checkbox"/>	<input type="checkbox"/>
<input type="checkbox"/>	<input type="text"/>	<input type="text"/>	<input type="text"/>	<input type="text"/>	<input type="text"/>	<input type="checkbox"/>	<input type="checkbox"/>	<input type="checkbox"/>	<input type="checkbox"/>	<input type="checkbox"/>	<input type="checkbox"/>	<input type="checkbox"/>	<input type="checkbox"/>	<input type="checkbox"/>	<input type="checkbox"/>	<input type="checkbox"/>	<input type="checkbox"/>
<input type="checkbox"/>	<input type="text"/>	<input type="text"/>	<input type="text"/>	<input type="text"/>	<input type="text"/>	<input type="checkbox"/>	<input type="checkbox"/>	<input type="checkbox"/>	<input type="checkbox"/>	<input type="checkbox"/>	<input type="checkbox"/>	<input type="checkbox"/>	<input type="checkbox"/>	<input type="checkbox"/>	<input type="checkbox"/>	<input type="checkbox"/>	<input type="checkbox"/>
<input type="checkbox"/>	<input type="text"/>	<input type="text"/>	<input type="text"/>	<input type="text"/>	<input type="text"/>	<input type="checkbox"/>	<input type="checkbox"/>	<input type="checkbox"/>	<input type="checkbox"/>	<input type="checkbox"/>	<input type="checkbox"/>	<input type="checkbox"/>	<input type="checkbox"/>	<input type="checkbox"/>	<input type="checkbox"/>	<input type="checkbox"/>	<input type="checkbox"/>
<input type="checkbox"/>	<input type="text"/>	<input type="text"/>	<input type="text"/>	<input type="text"/>	<input type="text"/>	<input type="checkbox"/>	<input type="checkbox"/>	<input type="checkbox"/>	<input type="checkbox"/>	<input type="checkbox"/>	<input type="checkbox"/>	<input type="checkbox"/>	<input type="checkbox"/>	<input type="checkbox"/>	<input type="checkbox"/>	<input type="checkbox"/>	<input type="checkbox"/>
<input type="checkbox"/>	<input type="text"/>	<input type="text"/>	<input type="text"/>	<input type="text"/>	<input type="text"/>	<input type="checkbox"/>	<input type="checkbox"/>	<input type="checkbox"/>	<input type="checkbox"/>	<input type="checkbox"/>	<input type="checkbox"/>	<input type="checkbox"/>	<input type="checkbox"/>	<input type="checkbox"/>	<input type="checkbox"/>	<input type="checkbox"/>	<input type="checkbox"/>
<input type="checkbox"/>	<input type="text"/>	<input type="text"/>	<input type="text"/>	<input type="text"/>	<input type="text"/>	<input type="checkbox"/>	<input type="checkbox"/>	<input type="checkbox"/>	<input type="checkbox"/>	<input type="checkbox"/>	<input type="checkbox"/>	<input type="checkbox"/>	<input type="checkbox"/>	<input type="checkbox"/>	<input type="checkbox"/>	<input type="checkbox"/>	<input type="checkbox"/>
<input type="checkbox"/>	<input type="text"/>	<input type="text"/>	<input type="text"/>	<input type="text"/>	<input type="text"/>	<input type="checkbox"/>	<input type="checkbox"/>	<input type="checkbox"/>	<input type="checkbox"/>	<input type="checkbox"/>	<input type="checkbox"/>	<input type="checkbox"/>	<input type="checkbox"/>	<input type="checkbox"/>	<input type="checkbox"/>	<input type="checkbox"/>	<input type="checkbox"/>
<input type="checkbox"/>	<input type="text"/>	<input type="text"/>	<input type="text"/>	<input type="text"/>	<input type="text"/>	<input type="checkbox"/>	<input type="checkbox"/>	<input type="checkbox"/>	<input type="checkbox"/>	<input type="checkbox"/>	<input type="checkbox"/>	<input type="checkbox"/>	<input type="checkbox"/>	<input type="checkbox"/>	<input type="checkbox"/>	<input type="checkbox"/>	<input type="checkbox"/>
Page totals ➤						<input type="checkbox"/>	<input type="checkbox"/>	<input type="checkbox"/>	<input type="checkbox"/>	<input type="checkbox"/>	<input type="checkbox"/>	<input type="checkbox"/>	<input type="checkbox"/>	<input type="checkbox"/>	<input type="checkbox"/>	<input type="checkbox"/>	<input type="checkbox"/>

Be sure to transfer these totals to the Summary page (Form 300A) before you post it.

Page ___ of ___

Notice to Employees



This employer is registered with the Employment Development Department (EDD) as required by the California Unemployment Insurance Code and is reporting wage credits to the EDD that are being accumulated for you to be used as a basis for:

UI

Unemployment Insurance

(funded entirely by employers' taxes)

Unemployment Insurance (UI) is paid for by your employer and provides partial income replacement when you are unemployed or your hours are reduced due to no fault of your own. To claim UI benefit payments you must also meet all UI eligibility requirements, including that you must be available for work and searching for work.

How to File a New UI Claim

Use one of the following methods:

- **Online:** UI OnlineSM is the fastest and most convenient way to file your UI claim. Visit [UI Online](http://edd.ca.gov/UI_Online) (edd.ca.gov/UI_Online) to get started.
- **Phone:** Representatives are available at the following toll-free numbers, Monday through Friday between **8 a.m. to 12 noon** (Pacific Standard Time) except during state holidays.

English	1-800-300-5616	Cantonese	1-800-547-3506	Vietnamese	1-800-547-2058
Spanish	1-800-326-8937	Mandarin	1-866-303-0706	TTY	1-800-815-9387
- **Fax or Mail:** When accessing UI Online to file a new claim, some customers will be instructed to fax or mail their UI application to the EDD. If this occurs, the *Unemployment Insurance Application* (DE 1101I), will display. For faster and more secure processing, fax the completed form to the number listed on the form. If mailing your UI application, use the address on the form and allow additional time for processing.

Important: Waiting to file your UI claim may delay benefit payments.

DI

Disability Insurance

(funded entirely by employees' contributions)

Disability Insurance (DI) is funded by employees' contributions and provides partial wage replacement benefits to eligible Californians who are unable to work due to a non-work-related illness, injury, pregnancy, or disability.

Your employer must provide the *Disability Insurance Provisions* (DE 2515) brochure, to newly hired employees and to each employee who is unable to work due to a non-work-related illness, injury, pregnancy, or disability.

How to File a New DI Claim

Use one of the following methods:

- **Online:** SDI Online is the fastest and most convenient way to file your claim. Visit [SDI Online](http://edd.ca.gov/SDI_Online) (edd.ca.gov/SDI_Online) to get started.
- **Mail:** To file a claim with the EDD by mail, complete and submit a *Claim for Disability Insurance (DI) Benefits* (DE 2501) form. You can obtain a paper claim form from your employer, physician/practitioner, visiting a State Disability Insurance office, online at [EDD Forms and Publications](http://edd.ca.gov/Forms) (edd.ca.gov/Forms), or by calling 1-800-480-3287.

Note: If your employer maintains an approved Voluntary Plan for DI coverage, contact your employer for assistance.

For more information about DI, visit [State Disability Insurance](http://edd.ca.gov/disability) (edd.ca.gov/disability) or call 1-800-480-3287.

State government employees should call 1-866-352-7675.

TTY (for deaf or hearing-impaired individuals only) is available at 1-800-563-2441.

PFL

Paid Family Leave

(funded entirely by employees' contributions)

Paid Family Leave (PFL) is funded by employees' contributions and provides partial wage replacement benefits to eligible Californians who need time off work to care for seriously ill child, parent, parent-in-law, grandparent, grandchild, sibling, spouse, or registered domestic partner. Benefits are available to parents who need time off work to bond with a new child entering the family by birth, adoption, or foster care placement. Benefits are also available for eligible Californians who need time off work to participate in a qualifying event resulting from a spouse, registered domestic partner, parent, or child's military deployment to a foreign country.

Your employer must provide the *Paid Family Leave* (DE 2511) brochure, to newly hired employees and to each employee who is taking time off work to care for a seriously ill family members, to bond with a new child, or to participate in a qualifying military event.

How to File a New PFL Claim

Use one of the following methods:

- **Online:** SDI Online is the fastest and most convenient way to file your claim. Visit [SDI Online](http://edd.ca.gov/SDI_Online) (edd.ca.gov/SDI_Online) to get started.
- **Mail:** To file a claim with the EDD by mail, complete and submit a *Claim for Paid Family Leave (PFL) Benefits* (DE 2501F) form. You can obtain a paper claim form from your employer, a physician/practitioner, visiting a State Disability Insurance office, online at [EDD Forms and Publications](http://edd.ca.gov/Forms) (edd.ca.gov/Forms), or by calling 1-877-238-4373.

Note: If your employer maintains an approved Voluntary Plan for PFL coverage, contact your employer for assistance.

For more information about PFL, visit [State Disability Insurance](http://edd.ca.gov/disability) (edd.ca.gov/disability) or call 1-877-238-4373.

State government employees should call 1-877-945-4747.

TTY (for deaf or hearing-impaired individuals only) is available at 1-800-445-1312.

Note: Some employees may be exempt from coverage by the above insurance programs. It is illegal to make a false statement or to withhold facts to claim benefits. For additional information, visit the [EDD](http://edd.ca.gov) (edd.ca.gov).



NOTICE TO EMPLOYEES UNEMPLOYMENT INSURANCE BENEFITS

This employer is registered under the California Unemployment Insurance Code and is reporting wage credits to the Employment Development Department (EDD) that are being accumulated for you to be used as a basis for Unemployment Insurance benefits.

You may be eligible to receive Unemployment Insurance benefits if you are:

- Unemployed or working less than full-time.
and
- Out of work due to no fault of your own and physically able to work, ready to accept work, and looking for work.

Employees of Educational Institutions:

Unemployment Insurance benefits based on wages earned while employed by a public or nonprofit educational institution may not be paid during a school recess period if the employee has reasonable assurance of returning to work at the end of the recess period (California Unemployment Insurance Code section 1253.3). Benefits based on other covered employment may be payable during recess periods if the unemployed individual is in all other respects eligible, and the wages earned in other covered employment are sufficient to establish an Unemployment Insurance claim after excluding wages earned from a public or nonprofit educational institution(s).

Note: Some employees may be exempt from Unemployment and Disability Insurance coverage.

The fastest way to file for Unemployment Insurance (UI) is with UI Online at www.edd.ca.gov/UI_Online.

You may also file for Unemployment Insurance by calling toll-free from anywhere in the U.S. at:

English	1-800-300-5616	Mandarin	1-866-303-0706
Spanish	1-800-326-8937	Vietnamese	1-800-547-2058
Cantonese	1-800-547-3506	TTY	1-800-815-9387

Note: Waiting to file a claim could delay benefits.
EDD representatives are available Monday through Friday between 8 a.m. and 12 noon (Pacific Time).

STATE OF CALIFORNIA - DEPARTMENT OF INDUSTRIAL RELATIONS Division of Workers' Compensation



Notice to Employees--Injuries Caused By Work

You may be entitled to workers' compensation benefits if you are injured or become ill because of your job. Workers' compensation covers most work-related physical or mental injuries and illnesses. An injury or illness can be caused by one event (such as hurting your back in a fall) or by repeated exposures (such as hurting your wrist from doing the same motion over and over).

Benefits. Workers' compensation benefits include:

- **Medical Care:** Doctor visits, hospital services, physical therapy, lab tests, x-rays, medicines, medical equipment and travel costs that are reasonably necessary to treat your injury. You should never see a bill. There are limits on chiropractic, physical therapy and occupational therapy visits.
- **Temporary Disability (TD) Benefits:** Payments if you lose wages while recovering. For most injuries, TD benefits may not be paid for more than 104 weeks within five years from the date of injury.
- **Permanent Disability (PD) Benefits:** Payments if you do not recover completely and your injury causes a permanent loss of physical or mental function that a doctor can measure.
- **Supplemental Job Displacement Benefit:** A nontransferable voucher, if you are injured on or after 1/1/2004, your injury causes permanent disability, and your employer does not offer you regular, modified, or alternative work.
- **Death Benefits:** Paid to your dependents if you die from a work-related injury or illness.

Naming Your Own Physician Before Injury or Illness (Predesignation). You may be able to choose the doctor who will treat you for a job injury or illness. If eligible, you must tell your employer, in writing, the name and address of your personal physician or medical group *before* you are injured. You must obtain their agreement to treat you for your work injury. For instructions, see the written information about workers' compensation that your employer is required to give to new employees.

If You Get Hurt:

1. **Get Medical Care.** If you need emergency care, call 911 for help immediately from the hospital, ambulance, fire department or police department. If you need first aid, contact your employer.
2. **Report Your Injury.** Report the injury immediately to your supervisor or to an employer representative. Don't delay. There are time limits. If you wait too long, you may lose your right to benefits. Your employer is required to provide you with a claim form within one working day after learning about your injury. Within one working day after you file a claim form, your employer or claims administrator **must** authorize the provision of all treatment, up to ten thousand dollars, consistent with the applicable treatment guidelines, for your alleged injury until the claim is accepted or rejected.
3. **See Your Primary Treating Physician (PTP).** This is the doctor with overall responsibility for treating your injury or illness.
 - If you predesignated your personal physician or a medical group, you may see your personal physician or the medical group after you are injured.
 - If your employer is using a medical provider network (MPN) or a health care organization (HCO), in most cases you will be treated within the MPN or HCO unless you predesignated a personal physician or medical group. An MPN is a group of physicians and health care providers who provide treatment to workers injured on the job. You should receive information from your employer if you are covered by an HCO or a MPN. Contact your employer for more information.
 - If your employer is not using an MPN or HCO, in most cases the claims administrator can choose the doctor who first treats you when you are injured, unless you predesignated a personal physician or medical group.
4. **Medical Provider Networks.** Your employer may be using an MPN, which is a group of health care providers designated to provide treatment to workers injured on the job. If you have predesignated a personal physician or medical group prior to your work injury, then you may go there to receive treatment from your predesignated doctor. If you are treating with a non-MPN doctor for an existing injury, you may be required to change to a doctor within the MPN. For more information, see the MPN contact information below:

MPN website: _____

MPN Effective Date: _____ MPN Identification number: _____

If you need help locating an MPN physician, call your MPN access assistant at: _____

If you have questions about the MPN or want to file a complaint against the MPN, call the MPN Contact Person at: _____

Discrimination. It is illegal for your employer to punish or fire you for having a work injury or illness, for filing a claim, or testifying in another person's workers' compensation case. If proven, you may receive lost wages, job reinstatement, increased benefits, and costs and expenses up to limits set by the state.

Questions? Learn more about workers' compensation by reading the information that your employer is required to give you at time of hire. If you have questions, see your employer or the claims administrator (who handles workers' compensation claims for your employer):

Claims Administrator _____ Phone _____

Workers' compensation insurer _____ (Enter "self-insured" if appropriate)

You can also get free information from a State Division of Workers' Compensation Information (DWC) & Assistance Officer. The nearest Information & Assistance Officer can be found at location: _____ or by calling toll-free (800) 736-7401. Learn more information about workers' compensation online: www.dwc.ca.gov and access a useful booklet "Workers' Compensation in California: A Guidebook for Injured Workers."

False claims and false denials. Any person who makes or causes to be made any knowingly false or fraudulent material statement or material representation for the purpose of obtaining or denying workers' compensation benefits or payments is guilty of a felony and may be fined and imprisoned.

Your employer may not be liable for the payment of workers' compensation benefits for any injury that arises from your voluntary participation in any **off-duty, recreational, social, or athletic activity** that is not part of your work-related duties.

WHISTLEBLOWERS ARE PROTECTED

It is the public policy of the State of California to encourage employees to notify an appropriate government or law enforcement agency, person with authority over the employee, or another employee with authority to investigate, discover, or correct the violation or noncompliance, and to provide information to and testify before a public body conducting an investigation, hearing or inquiry, when they have reason to believe their employer is violating a state or federal statute, or violating or not complying with a local, state or federal rule or regulation.

Who is protected?

Pursuant to [California Labor Code Section 1102.5](#), employees are the protected class of individuals. “Employee” means any person employed by an employer, private or public, including, but not limited to, individuals employed by the state or any subdivision thereof, any county, city, city and county, including any charter city or county, and any school district, community college district, municipal or public corporation, political subdivision, or the University of California. [[California Labor Code Section 1106](#)]

What is a whistleblower?

A “whistleblower” is an employee who discloses information to a government or law enforcement agency, person with authority over the employee, or to another employee with authority to investigate, discover, or correct the violation or noncompliance, or who provides information to or testifies before a public body conducting an investigation, hearing or inquiry, where the employee has reasonable cause to believe that the information discloses:

1. A violation of a state or federal statute,
2. A violation or noncompliance with a local, state or federal rule or regulation, or
3. With reference to employee safety or health, unsafe working conditions or work practices in the employee’s employment or place of employment.

A whistleblower can also be an employee who refuses to participate in an activity that would result in a violation of a state or federal statute, or a violation of or noncompliance with a local, state or federal rule or regulation.

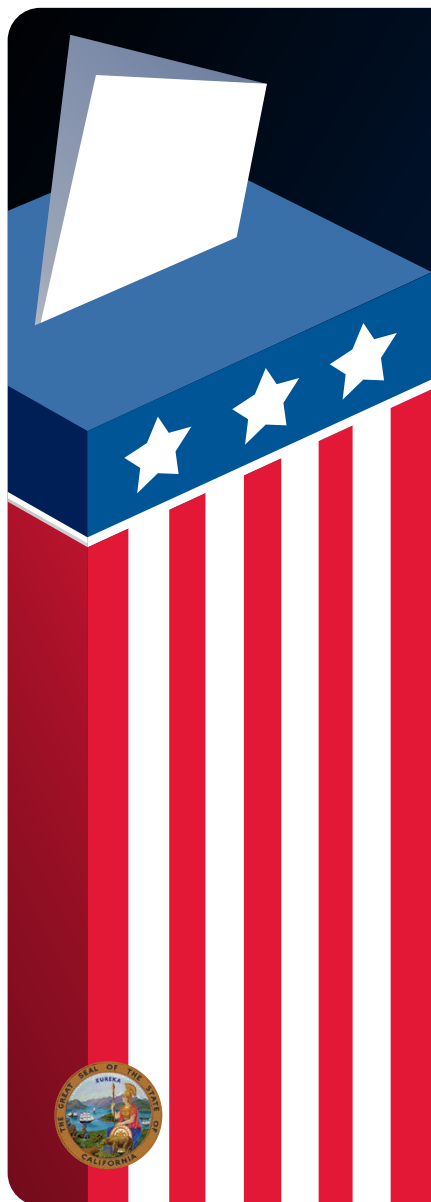
What protections are afforded to whistleblowers?

1. An employer may not make, adopt, or enforce any rule, regulation, or policy preventing an employee from being a whistleblower.
2. An employer may not retaliate against an employee who is a whistleblower.
3. An employer may not retaliate against an employee for refusing to participate in an activity that would result in a violation of a state or federal statute, or a violation or noncompliance with a state or federal rule or regulation.
4. An employer may not retaliate against an employee for having exercised his or her rights as a whistleblower in any former employment.

Under [California Labor Code Section 1102.5](#), if an employer retaliates against a whistleblower, the employer may be required to reinstate the employee’s employment and work benefits, pay lost wages, and take other steps necessary to comply with the law.

How to report improper acts

If you have information regarding possible violations of state or federal statutes, rules, or regulations, or violations of fiduciary responsibility by a corporation or limited liability company to its shareholders, investors, or employees, **call the California State Attorney General’s Whistleblower Hotline at 1-800-952-5225**. The Attorney General will refer your call to the appropriate government authority for review and possible investigation.



TIME OFF TO VOTE

POLLS ARE OPEN FROM 7:00 A.M. TO 8:00 P.M. EACH ELECTION DAY

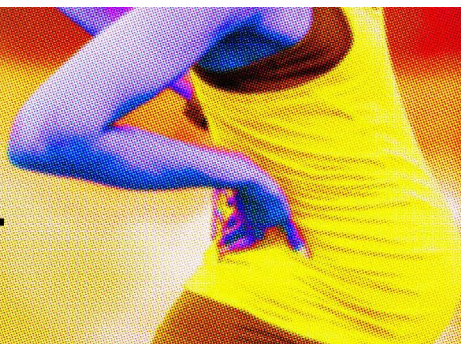
If you are scheduled to be at work during that time and you do not have sufficient time outside of working hours to vote at a statewide election, California law allows you to take up to two hours off to vote, without losing any pay.

You may take as much time as you need to vote, but only two hours of that time will be paid.

Your time off for voting can be only at the beginning or end of your regular work shift, whichever allows the most free time for voting and the least time off from your regular working shift, unless you make another arrangement with your employer.

If three working days before the election you think you will need time off to vote, you must notify your employer at least two working days prior to the election.

YOUR RIGHTS AND OBLIGATIONS AS A PREGNANT EMPLOYEE



Civil Rights
Department
STATE OF CALIFORNIA

IF YOU ARE PREGNANT, HAVE A PREGNANCY-RELATED MEDICAL CONDITION, OR ARE RECOVERING FROM CHILDBIRTH, PLEASE READ THIS NOTICE.

YOUR EMPLOYER* HAS AN OBLIGATION TO

- Reasonably accommodate your medical needs related to pregnancy, childbirth, or related conditions (such as temporarily modifying your work duties, providing you with a stool or chair, or allowing more frequent breaks);
- Transfer you to a less strenuous or hazardous position (if one is available) or duties if medically needed because of your pregnancy;
- Provide you with pregnancy disability leave (PDL) of up to four months (the working days you normally would work in one-third of a year or 17 1/3 weeks) and return you to your same job when you are no longer disabled by your pregnancy or, in certain instances, to a comparable job. Taking PDL, however, does not protect you from non-leave related employment actions, such as a layoff;
- Provide a reasonable amount of break time and use of a room or other location in close proximity to the employee's work area to express breast milk in private as set forth in the Labor Code; and
- Never discriminate, harass, or retaliate on the basis of pregnancy.

FOR PREGNANCY DISABILITY LEAVE

- PDL is not for an automatic period of time, but for the period of time that you are disabled by pregnancy, childbirth, or related medical condition. Your health care provider determines how much time you will need.
- Once your employer has been informed that you need to take PDL, your employer must guarantee in writing that you can return to work in your same or a comparable position if you request a written guarantee. Your employer may require you to submit written medical certification from your health care provider substantiating the need for your leave.
- PDL may include, but is not limited to, additional or more frequent breaks, time for prenatal or postnatal medical appointments, and doctor-ordered bed rest, and covers conditions such as severe morning sickness, gestational diabetes, pregnancy-induced hypertension, preeclampsia, recovery from childbirth or loss or end of pregnancy, and/or post-partum depression.
- PDL does not need to be taken all at once but can be taken on an as-needed basis as required by your health care provider, including intermittent leave or a reduced work schedule.
- Your leave will be paid or unpaid depending on your employer's policy for other medical leaves. You may also be eligible for state disability insurance or Paid Family Leave (PFL), administered by the California Employment Development Department.
- At your discretion, you can use any vacation or other paid time off during your PDL.
- Your employer may require or you may choose to use any available sick leave during your PDL.
- Your employer is required to continue your group health coverage during your PDL at the same level and under the same conditions that coverage would have been provided if you had continued in employment continuously for the duration of your leave.
- Taking PDL may impact certain of your benefits and your seniority date; please contact your employer for details.

NOTICE OBLIGATIONS AS AN EMPLOYEE

- Give your employer reasonable notice. To receive reasonable accommodation, obtain a transfer, or take PDL, you must give your employer sufficient notice for your employer to make appropriate plans. Sufficient notice means 30 days advance notice if the need for the reasonable accommodation, transfer, or PDL is foreseeable, or as soon as practicable if the need is an emergency or unforeseeable.
- Provide a written medical certification from your health care provider. Except in a medical emergency where there is no time to obtain it, your employer may require you to supply a written medical certification from your health care provider of the medical need for your reasonable accommodation, transfer or PDL. If the need is an emergency or unforeseeable, you must provide this certification within the time frame your employer requests, unless it is not practicable for you to do so under the circumstances despite your diligent, good faith efforts. Your employer must provide at least 15 calendar days for you to submit the certification. See if your employer has a copy of a medical certification form to give to your health care provider to complete.
- Please note that if you fail to give your employer reasonable advance notice or, if your employer requires it, written medical certification of your medical need, your employer may be justified in delaying your reasonable accommodation, transfer, or PDL.

ADDITIONAL LEAVE UNDER THE CALIFORNIA FAMILY RIGHTS ACT (CFRA)

Under the California Family Rights Act (CFRA), if you have more than 12 months of service with an employer, and have worked at least 1,250 hours in the 12-month period before the date you want to begin your leave, you may have a right to a family care or medical leave (CFRA leave). This leave may be up to 12 workweeks in a 12-month period for the birth, adoption, or foster care placement of your child**, or for your own serious health condition or that of your child, parent***, spouse, domestic partner, grandparent, grandchild, sibling, or someone else related by blood or in family-like relationship with the employee ("designated person"). Employers may pay their employees while taking CFRA leave, but employers are not required to do so, unless the employee is taking accrued paid time-off while on CFRA leave. Employees taking CFRA leave may be eligible for benefits administered by Employment Development Department.

TO FILE A COMPLAINT

Civil Rights Department
calcivilrights.ca.gov/complaintprocess
Toll Free: 800.884.1684 / TTY: 800.700.2320
California Relay Service (711)

Have a disability that requires a reasonable accommodation? CRD can assist you with your complaint.

For translations of this guidance, visit:
www.calcivilrights.ca.gov/posters/required

*PDL, CFRA leave, and anti-discrimination protections apply to employers of 5 or more employees; anti-harassment protections apply to employers of 1 or more.

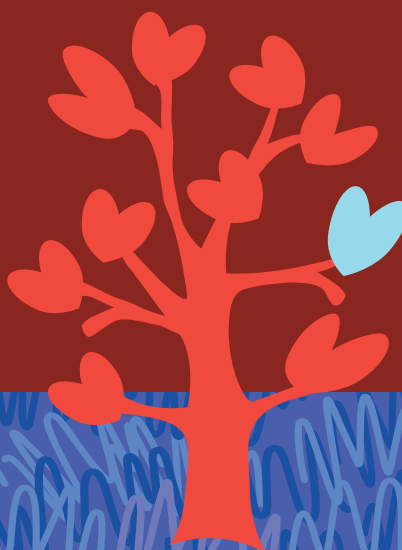
** "Child" means a biological, adopted, or foster child, a stepchild, a legal ward, or a child of an employee or the employee's domestic partner, or a person to whom the employee stands in loco parentis.

*** "Parent" includes a biological, foster, or adoptive parent, a parent-in-law, a stepparent, a legal guardian, or other person who stood in loco parentis to the employee when the employee was a child.

FAMILY CARE & MEDICAL LEAVE & PREGNANCY DISABILITY LEAVE



Civil Rights
Department
STATE OF CALIFORNIA



Under California law, an employee may have the right to take job-protected leave to care for their own serious health condition or a family member with a serious health condition, or to bond with a new child (via birth, adoption, or foster care). California law also requires employers to provide job-protected leave and accommodations to employees who are disabled by pregnancy, childbirth, or a related medical condition.

Under the California Family Rights Act of 1993 (CFRA), many employees have the right to take job-protected leave, which is leave that will allow them to return to their job or a similar job after their leave ends. This leave may be up to 12 work weeks in a 12-month period for:

- the employee's own serious health condition;
- the serious health condition of a child, spouse, domestic partner, parent, parent-in-law, grandparent, grandchild, sibling, or someone else with a blood or family-like relationship with the employee ("designated person"); or
- the birth, adoption, or foster care placement of a child.

If an employee takes leave for their own or a family member's serious health condition, leave may be taken on an intermittent or reduced work schedule when medically necessary, among other circumstances.

Eligibility. To be eligible for CFRA leave, an employee must have more than 12 months of service with their employer, have worked at least 1,250 hours in the 12-month period before the date they want to begin their leave, and their employer must have five or more employees.

Pay and Benefits During Leave. While the law provides only unpaid leave, some employers pay their employees during CFRA leave. In addition, employees may choose (or employers may require) use of accrued paid leave while taking CFRA leave under certain circumstances. Employees on CFRA leave may also be eligible for benefits administered by the Employment Development Department.

Taking CFRA leave may impact certain employee benefits and seniority date. If employees want more information regarding eligibility for a leave and/or the impact of the leave on seniority and benefits, they should contact their employer.

Pregnancy Disability Leave. Even if an employee is not eligible for CFRA leave, if disabled by pregnancy, childbirth or a related medical condition, the employee is entitled to take a pregnancy disability leave of up to four months, depending on their period(s) of actual disability. If the employee is CFRA-eligible, they have certain rights to take *both* a pregnancy disability leave and a CFRA leave for reason of the birth of their child.

Reinstatement. Both CFRA leave and pregnancy disability leave contain a guarantee of reinstatement to the same position or, in certain instances, a comparable position at the end of the leave, subject to any defense allowed under the law.

Notice. For foreseeable events (such as the expected birth of a child or a planned medical treatment for the employee or of a family member), the employee must provide, if possible, at least 30 days' advance notice to their employer that they will be taking leave. For events that are unforeseeable, employees should notify their employers, at least verbally, as soon as they learn of the need for the leave. Failure to comply with these notice rules is grounds for, and may result in, deferral of the requested leave until the employee complies with this notice policy.

Certification. Employers may require certification from an employee's health care provider before allowing leave for pregnancy disability or for the employee's own serious health condition. Employers may also require certification from the health care provider of the employee's family member, including a designated person, who has a serious health condition, before granting leave to take care of that family member.

Want to learn more?

Visit: calcivilrights.ca.gov/family-medical-pregnancy-leave/

If you have been subjected to discrimination, harassment, or retaliation at work, or have been improperly denied protected leave, file a complaint with the Civil Rights Department (CRD).

TO FILE A COMPLAINT

Civil Rights Department

calcivilrights.ca.gov/complaintprocess
Toll Free: 800.884.1684 / TTY: 800.700.2320
California Relay Service (711)

Have a disability that requires a reasonable accommodation?
CRD can assist you with your complaint.

EMERGENCY

AMBULANCE: _____

FIRE — RESCUE: _____

HOSPITAL: _____

PHYSICIAN: _____

ALTERNATE: _____

POLICE: _____

CAL/OSHA: _____

Posting is required by Title 8 Section 1512 (e), California Code of Regulations



March 1990
S-500

State of California
Department of Industrial Relations
Cal/OSHA Publications
DOSHPublications@dir.ca.gov

State of California
Department of Industrial Relations
Division of Labor Standards Enforcement

PAYDAY NOTICE

REGULAR PAYDAYS FOR EMPLOYEES OF _____
(FIRM NAME)

_____ SHALL BE AS FOLLOWS:

THIS IS IN ACCORDANCE WITH SECTIONS 204, 204A, 204B, 205, AND 205.5
OF THE CALIFORNIA LABOR CODE

BY _____

TITLE _____

DLSE 8 (REV. 06-02)

PLEASE POST

THIS POSTER MUST BE DISPLAYED WHERE EMPLOYEES CAN EASILY READ IT

(Poster may be printed on 8 ½" x 11" letter size paper)

HEALTHY WORKPLACES/HEALTHY FAMILIES ACT: CALIFORNIA PAID SICK LEAVE (as amended effective 1/1/2024)

Entitlement:

- An employee who, on or after July 1, 2015, works in California for 30 or more days within a year from the beginning of employment is entitled to paid sick leave.
- Paid sick leave accrues at the rate of one hour per every 30 hours worked, paid at the employee's regular wage rate. Accrual shall begin on the first day of employment or July 1, 2015, whichever is later. Accrued paid sick leave shall carry over to the following year of employment and may be capped at 80 hours or 10 days.
- An employer can also provide 5 days or 40 hours, whichever is greater, of paid sick leave "up-front" at the beginning of a 12-month period. No accrual or carry over is required.
- Other accrual plans that meet specified conditions, including PTO plans, may also satisfy the requirements.

Usage:

- An employee may use paid sick days beginning on the 90th day of employment.
- An employer shall provide paid sick days upon the oral or written request of an employee for themselves or a family member for the diagnosis, care or treatment of an existing health condition or preventive care, or specified purposes for an employee who is a victim of domestic violence, sexual assault, or stalking.
- An employer may limit the use of paid sick days to 40 hours or five days, whichever is greater, in each year of employment.

Retaliation or discrimination against an employee who requests paid sick days or uses paid sick days or both is prohibited. An employee can file a complaint with the Labor Commissioner against an employer who retaliates or discriminates against the employee.

For additional information you may contact your employer or the local office of the Labor Commissioner. Locate the office by looking at the list of offices on our website <http://www.dir.ca.gov/dlse/DistrictOffices.htm> using the [alphabetical listing of cities, locations, and communities](#). Staff is available in person and by telephone.

THE RIGHTS OF EMPLOYEES WHO ARE TRANSGENDER OR GENDER NONCONFORMING



Civil Rights
Department
STATE OF CALIFORNIA

CALIFORNIA LAW PROTECTS TRANSGENDER AND GENDER NONCONFORMING PEOPLE FROM DISCRIMINATION, HARASSMENT, AND RETALIATION AT WORK. THESE PROTECTIONS ARE ENFORCED BY THE CIVIL RIGHTS DEPARTMENT (CRD).

THINGS YOU NEED TO KNOW

1. Does California law protect transgender and gender nonconforming employees from employment discrimination?

Yes. All employees, job applicants, unpaid interns, volunteers, and contractors are protected from discrimination at work when based on a protected characteristic, such as their gender identity, gender expression, sexual orientation, race, or national origin. This means that private employers with five or more employees may not, for example, refuse to hire or promote someone because they identify as – or are perceived to identify as – transgender or non-binary, or because they express their gender in non-stereotypical ways.

Employment discrimination can occur at any time during the hiring or employment process. In addition to refusing to hire or promote someone, unlawful discrimination includes discharging an employee, subjecting them to worse working conditions, or unfairly modifying the terms of their employment because of their gender identity or gender expression.

2. Does California law protect transgender and gender nonconforming employees from harassment at work?

Yes. All employers are prohibited from harassing any employee, intern, volunteer, or contractor because of their gender identity or gender expression. For example, an employer can be liable if co-workers create a hostile work environment – whether in person or virtual – for an employee who is undergoing a gender transition. Similarly, an employer can be liable when customers or other third parties harass an employee because of their gender identity or expression, such as intentionally referring to a gender-nonconforming employee by the wrong pronouns or name.

3. Does California law protect employees who complain about discrimination or harassment in the workplace?

Yes. Employers are prohibited from retaliating against any employee who asserts their right under the law to be free from discrimination or harassment. For example, an employer commits unlawful retaliation when it responds to an employee making a discrimination complaint – to their supervisor, human resources staff, or CRD – by cutting their shifts.

4. If bathrooms, showers, and locker rooms are sex-segregated, can employees choose the one that is most appropriate for them?

Yes. All employees have a right to safe and appropriate restroom and locker room facilities. This includes the right to use a restroom or locker room that corresponds to the employee's gender identity, regardless of the employee's sex assigned at birth. In addition, where possible, an employer should provide an easily accessible, gender-neutral (or "all-gender"), single user facility for use by any employee. The use of single stall restrooms

and other facilities should always be a matter of choice. Employees should never be forced to use one, as a matter of policy or due to harassment.

5. Does an employee have the right to be addressed by the name and pronouns that correspond to their gender identity or gender expression, even if different from their legal name and gender?

Yes. Employees have the right to use and be addressed by the name and pronouns that correspond with their gender identity or gender expression. These are sometimes known as "chosen" or "preferred" names and pronouns. For example, an employee does not need to have legally changed their name or birth certificate, nor have undergone any type of gender transition (such as surgery), to use a name and/or pronouns that correspond with their gender identity or gender expression. An employer may be legally obligated to use an employee's legal name in specific employment records, but when no legal obligation compels the use of a legal name, employers and co-workers must respect an employee's chosen name and pronouns. For example, some businesses utilize software for payroll and other administrative purposes, such as creating work schedules or generating virtual profiles. While it may be appropriate for the business to use a transgender employee's legal name for payroll purposes when legally required, refusing or failing to use that person's chosen name and pronouns, if different from their legal name, on a shift schedule, nametag, instant messaging account, or work ID card could be harassing or discriminatory. CRD recommends that employers take care to ensure that each employee's chosen name and pronouns are respected to the greatest extent allowed by law.

6. Does an employee have the right to dress in a way that corresponds with their gender identity and gender expression?

Yes. An employer who imposes a dress code must enforce it in a non-discriminatory manner. This means that each employee must be allowed to dress in accordance with their gender identity and expression. While an employer may establish a dress code or grooming policy in accord with business necessity, all employees must be held to the same standard, regardless of their gender identity or expression.

7. Can an employer ask an applicant about their sex assigned at birth or gender identity in an interview?

No. Employers may ask non-discriminatory questions, such as inquiring about an applicant's employment history or asking for professional references. But an interviewer should not ask questions designed to detect a person's gender identity or gender transition history such as asking about why the person changed their name. Employers should also not ask questions about a person's body or whether they plan to have surgery.

Want to learn more?

Visit: <https://bit.ly/3hTG1EO>

TO FILE A COMPLAINT

Civil Rights Department

calcivilrights.ca.gov/complaintprocess
Toll Free: 800.884.1684 / TTY: 800.700.2320
California Relay Service (711)

Have a disability that requires a reasonable accommodation?
CRD can assist you with your complaint.

Additional Notices

With the purchase of your California Digital Comply Anywhere Poster Pack, you are entitled to free downloads of conditionally required industry-specific and municipal postings.

See instructions below to review and download additionally required materials.

- 1) Review all conditional notices required in the state of California.
- 2) Download, print, and post any notices that pertain to your business type, demographic, and/or location.

To download these materials, please visit:
www.personnelconcepts.com/downloads/cacn

When prompted, enter the ACCESS CODE: PCCACN