
Meeting Minutes



Architecture Engineering Planning Interiors

1650 Spruce Street, Suite 300
Riverside, CA 92507

Meeting Date	11.29.2021
To	Hussain Agah, Mehran Mohtasham, Myra Nava
From	DLR Group
Location	via ZOOM
Project	RCCD: Sustainability and Climate Action Plan
Project No.	N/A
Attendees	Linsey Graft, Lindsey Perez, Jennifer Bielman, Chip West, Tucker Amidon, Charlie Richard, Dr. Amber Casolari, Gabriel Rivera, Ismeal Davila, Jennifer Lawson, Katier Caceres, Leo Truttman, Marc Sanchez, Natalie Halsell, Paul O'Connell, Robert Beebe, Sabrina Kroetz, Stephen Ashby, Tonya Huff
Purpose	RCC – RD+AS Workshop #3

Agenda:

Project Introduction (5 mins)

Introduction of Planning Framework (10 mins)

Discussion – opportunities and challenges (15 mins)

Taking a peek ahead - Examples of TOP Values (15 mins)

Next Steps (5 mins)

Minutes: See slides attached.

Discussion #1:

Now that you've seen how the framework is planned, **what opportunities (+) or challenges (-) do you think we will run into with the planning and implementation of the S-CAP at RCC?**

- Tight budgets and decisions to make -- sustainability will be something we might not say yes to for short term vs. a long-term goal.
 - We should also "Sell" this to "SAVE" and not just money
- What are the opportunities for grant money to help them achieve their goals?
 - How can we make this a decision for now that doesn't compromise sustainability and climate action?
- Return of the Investment needs to be part of how the sustainability and climate action plan can pay for itself.

Discussion #2:

2021 SUSTAINABILITY AND CLIMATE ACTION PLAN





Agenda

Project Introduction (5 mins)

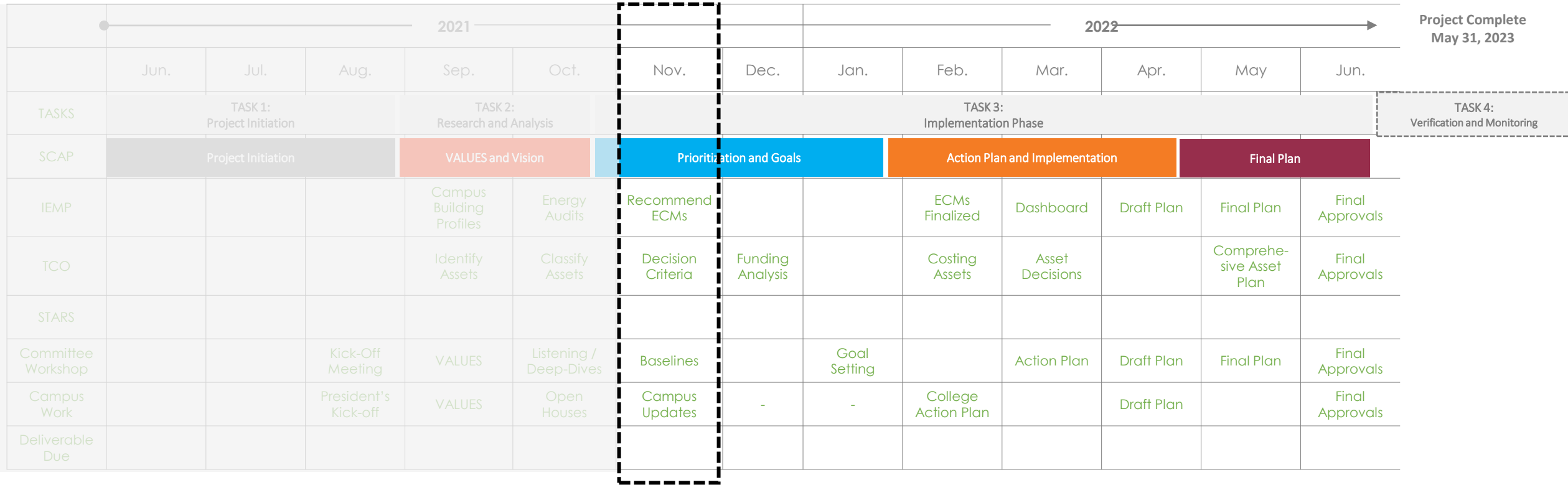
Introduction of Planning Framework (10 mins)

Discussion – opportunities and challenges (15 mins)

Taking a peek ahead - Examples of TOP Values (15 mins)

Next Steps (5 mins)

Our Project Schedule



We are here.

WORKSHOP 01: RCC Top VALUES

Riverside City College

TRUST AND TRANSPARENCY IN WASTE, PROCUREMENT AND OPERATIONS

TRANSPARENCY: DECISION-MAKING
How can you keep the community informed of decision-making processes?

PROCUREMENT + OPERATIONS
How can procurement, building operations, and transportation systems support your business goals?

WASTE
What quantity of garbage, recycling, and other waste are you producing? How can you reduce it?

BEAUTY + INSPIRATION
How can beauty and inspiration with the built environment improve and enhance our physical and mental health? How can we create a safe, healthy, and inspiring work environment in our buildings?

DESIGN FOR DIVERSITY
How can we design our buildings and spaces to be inclusive and accessible to all?

MANAGE OVER
How can we manage our resources and operations to be sustainable and resilient?

GOODS + SUPPLIES
How can we source our goods and supplies in a sustainable and ethical manner?

REGULATORY PARTNERSHIPS
How can we partner with regulatory agencies to ensure compliance and improve our operations?

RESILIENCY TO BETTER ADDRESS THE UNKNOWN

EMERGENCY PLANNING
How can we define a clear plan of action for operating your building / site during a short-term or long-term hazard event?

RESILIENCY
How can we enhance our ability to withstand and recover from a disaster or other crisis?

ADAPTATION + MITIGATION
How can we adapt our buildings and operations to changing conditions and reduce our carbon footprint?

SAFETY + SECURITY
How can we ensure the safety and security of our buildings and operations?

DECARBONIZATION TAKES COMMUNITY SUPPORT

DECARBONIZATION: ENERGY
Where is your project sourcing its energy from? How can your project replace fossil fuels with low to no-carbon energy sources?

ENERGY
How can changes in energy infrastructure support your broader mission, reduce costs, and build a greener planet?

ACCESS + MOBILITY
How can your project advocate and celebrate transit-oriented design, connections between transit hubs, and walkable communities?

OPERATIONAL OPTIMIZATION
How can we optimize our building operations to reduce energy consumption and improve efficiency?

MULTI-MODAL TRANSPORTATION
How can we support and encourage the use of multiple modes of transportation to reduce car dependency?

COMMUNITY PARTNERSHIPS
How can we partner with community organizations to support our decarbonization goals?

DECARBONIZATION: TRANSPORTATION
How can we support and encourage the use of sustainable transportation modes?

COMMUNITY ACCESS
How can we ensure that our buildings and operations are accessible to all community members?

HEALTH AND WELL-BEING OCCURS AT ALL SCALES - HUMAN, CAMPUS, AND COMMUNITY

BIOPHILIA
How can we incorporate nature and natural elements into our buildings and spaces to improve health and well-being?

ACTIVE SPACES
How can we create and promote spaces that encourage physical activity and movement?

INDIVIDUAL FULFILLMENT
How can we support and promote the personal growth and well-being of our community members?

INDOOR ENVIRONMENTAL QUALITY
How can we improve the air quality, lighting, and acoustics in our buildings to support health and well-being?

PUBLIC SPACE
How can we create and promote public spaces that support community interaction and well-being?

COMMUNITY CONNECTOR
How can we create and promote spaces that support community connection and well-being?

HEALTH + WELL-BEING
How can interest-based design "selectively activate positive" emotional and physical well-being and encourage them to make "healthier choices"?

WHEN EQUITY IS AT THE CENTER, INCLUSION, SOCIAL AND CLIMATE JUSTICE ARE POSSIBLE

EQUITY
How is your project allocating services, resources, and opportunities in a just and equitable manner, and prioritizing marginalized groups?

CULTURE + IDENTITY
How can we support and promote the cultural and identity needs of our diverse community members?

ORGANIZATIONAL TRANSFORMATION
How can we transform our organization to be more inclusive, equitable, and sustainable?

INCLUSION
How can we ensure that all community members have an equal voice and opportunity to participate in our projects?

MULTI-CULTURAL RELEVANCE
How can we ensure that our projects are relevant and meaningful to our diverse community members?

CLIMATE JUSTICE
How can we address the disproportionate impacts of climate change on marginalized communities?

SOCIAL JUSTICE
How can we promote and support social justice and equity in our buildings and operations?

EQUITABLE DEVELOPMENT
How can we ensure that our projects support equitable development and community well-being?

THINK OF WATER AS A SYSTEM AND RESOURCE - SUPPORT BEST-PRACTICES!

WATER SELF-SUFFICIENCY
How can your project ensure a reliable water supply regardless of external circumstances and systems? What is your tolerance for water systems innovation to achieve water self-sufficiency?

Ties to curriculum and events!

ECOSYSTEM SERVICES
How can we support and promote the ecosystem services provided by our buildings and spaces?

BEAUTY + INSPIRATION
How can beauty and inspiration with the built environment improve and enhance our physical and mental health?

WATER CONTEXT OF PLACE
How can we ensure that our projects are contextually appropriate and support the water needs of our community members?

OUR PLANNING FRAMEWORK: Organizing the VALUES (Our Why)

Included

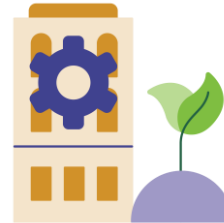
Includes the creation of goals and metrics within the S-CAP



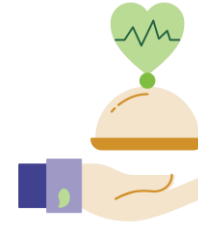
Decarbonization and Climate Justice



Waste / Procurement



Eco-systems / Water



Health and Well-being



Resiliency

Influenced

Would be included in an update with a sustainability lens / new plan



Academics



Engagement



Trust and Transparency

Reinforced

Planning and metrics already exist in other plans



Community Partnerships



Equity and Social Justice


VALUES AND OTHER FRAMEWORKS

Innovation and Leadership (ALL)


Your Top VALUES

CCCCO

AASHE Stars

 Decarbonization, Energy Use, and Climate Justice

 Waste / Procurement

 Water Eco-systems


 Health and Well-being


 Resiliency

 Academics

 Engagement

 Community Partnerships

 Trust and Transparency

 Equity and Social Justice

Operations

Operations

Gap

Gap

Academics

Academic and Curriculum

Engagement

Engagement

Planning and Administration

Planning and Administration

Impact Area

IMPACT AREAS are the top **VALUES** as created collectively by the District and Colleges.



Decarbonization and Climate Justice



Waste / Procurement



Eco-systems / Water



Health and Well-being



Resiliency



Academics



Engagement



Trust and Transparency



Community Partnerships



Equity and Social Justice

Impact Area

Goal or Desired Outcome

IMPACT AREAS are the top VALUES as created collectively by the District and Colleges.

GOALS AND OUTCOMES establish long-term milestones that the **District and Colleges will work toward**. These were established by cross-referencing System and Stars frameworks with Impact Areas.

Impact Area

Goal or Desired Outcome

Objectives

***IMPACT AREAS** are the top VALUES as created collectively by the District and Colleges.*

***GOALS AND OUTCOMES** establish long-term milestones that the District and Colleges will work toward. These were established by cross-referencing System and Stars frameworks with Impact Areas.*

***OBJECTIVES** outline measurable actions were established by from District and Campus engagement, System mandates, and HiEd best practices.*

***ACTIONS** are the initiatives that it will take to get meet your goal / outcome*

Actions (per objective)

Impact Area

***IMPACT AREAS** are the top VALUES as created collectively by the District and Colleges.*

***ACTIONS** are the initiatives that it will take to get meet your goal / outcome*

Goal or Desired Outcome

***GOALS AND OUTCOMES** establish long-term milestones that the District and Colleges will work toward. These were established by cross-referencing System and Stars frameworks with Impact Areas.*

Actions (per objective)

Objectives

***OBJECTIVES** outline measurable actions were established by from District and Campus engagement, System mandates, and HiEd best practices.*

Measures

***MEASURES** align with the objectives to manage what success will look.*

Metrics

***METRICS** outline how the objective will be measured based on the data available or data required.*

Milestones

***MILESTONES** represent the timeline associated with each objective. These outline short-, mid-, and long-term strategies.*

Impact Area

IMPACT AREAS are the top VALUES as created collectively by the District and Colleges.

Goal or Desired Outcome

GOALS AND OUTCOMES establish long-term milestones that the District and Colleges will work toward. These were established by cross-referencing System and Stars frameworks with Impact Areas.

ACTIONS are the initiatives that it will take to get meet your goal / outcome

Actions (per objective)

Objectives

OBJECTIVES outline measurable actions were established by from District and Campus engagement, System mandates, and HiEd best practices.

Measures

MEASURES align with the objectives to manage what success will look.

Metrics

METRICS outline how the objective will be measured based on the data available or data required.

Milestones

MILESTONES represent the timeline associated with each objective. These outline short-, mid-, and long-term strategies.

Five Dimensions of Resiliency

RESILIENCY overlays risk-management and the five dimensions of resiliency (Ecosystem, Financial, Human Health, Infrastructure, Social) into each Impact Area

Five Dimensions of Resilience – Adding a Lens of Mitigation

During a disruption (climatic, manmade, or public health), these are the lenses in which we can mitigate loss:

Impact Areas = Identified Milestones of Change as planned in the S-CAP



Decarbonization and Climate Justice



Waste / Procurement



Eco-systems / Water



Health and Well-being



Resiliency



Academics



Engagement



Trust and Transparency



Community Partnerships



Equity and Social Justice

Five Dimensions of Resilience – Adding a Lens of Mitigation

During a disruption (climatic, manmade, or public health), these are the lenses in which we can mitigate loss:

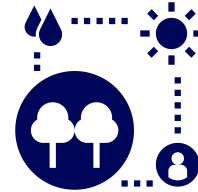
Impact Areas = Identified Milestones of Change as planned in the S-CAP



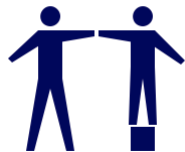
More Comprehensive – getting back to operations during a disruption



Health & Wellness
Basics – food, clean water, etc.



Ecosystem Services
Hazards – such as air quality, drought, etc.



Social Equity & Governance
How do different groups respond to disruption differently?



Infrastructure
Physical Building and Systems Infrastructure plus Transit, Communications, etc.



Economic
How can the College plan for financial disruptions, and/or plan to connect to a larger response for the region.

Here's an example!



RECYCLING AND WASTE REDUCTION

IMPACT AREAS are the top ***VALUES*** as created collectively by the District and Colleges.



RECYCLING AND WASTE REDUCTION

Achieve zero waste to landfill.

IMPACT AREAS are the top VALUES as created collectively by the District and Colleges.

GOALS AND OUTCOMES establish long-term milestones that the **District and Colleges will work toward**. These were established by cross-referencing System and Stars frameworks with Impact Areas.



RECYCLING AND WASTE REDUCTION

Achieve zero waste to landfill.

Reduce the total weight of non-construction waste.

Tons of non construction waste generated

-20%

By 2025

IMPACT AREAS are the top **VALUES** as created collectively by the District and Colleges.

GOALS AND OUTCOMES establish long-term milestones that the District and Colleges will work toward. These were established by cross-referencing System and Stars frameworks with Impact Areas.

OBJECTIVES outline measurable actions were established by from District and Campus engagement, System mandates, and HiEd best practices.

MEASURES align with the objectives to manage what success will look.

METRICS outline how the objective will be measured based on the data available or data required.

MILESTONES represent the timeline associated with each objective. These outline short-, mid-, and long-term strategies.



RECYCLING AND WASTE REDUCTION

Achieve zero waste to landfill.

Reduce the total weight of non-construction waste.

Tons of non-construction waste generated

-20%

By 2025

Increase diversion rates for non-construction waste.

Tons of non-construction waste diverted

+55%

By 2030

IMPACT AREAS are the top VALUES as created collectively by the District and Colleges.

GOALS AND OUTCOMES establish long-term milestones that the District and Colleges will work toward. These were established by cross-referencing System and Stars frameworks with Impact Areas.

OBJECTIVES outline measurable actions were established by from District and Campus engagement, System mandates, and HiEd best practices.

MEASURES align with the objectives to manage what success will look.

METRICS outline how the objective will be measured based on the data available or data required.

MILESTONES represent the timeline associated with each objective. These outline short-, mid-, and long-term strategies.



RECYCLING AND WASTE REDUCTION

Achieve zero waste to landfill.

Reduce the total weight of non-construction waste.

Tons of non-construction waste generated

-20%

By 2025

Increase diversion rates for non-construction waste.

Tons of non-construction waste diverted

+55%

By 2030

Increase construction waste diversion rate.

tons of construction waste diverted

+80%

By 2040

IMPACT AREAS are the top **VALUES** as created collectively by the District and Colleges.

GOALS AND OUTCOMES establish long-term milestones that the District and Colleges will work toward. These were established by cross-referencing System and Stars frameworks with Impact Areas.

OBJECTIVES outline measurable actions were established by from District and Campus engagement, System mandates, and HiEd best practices.

MEASURES align with the objectives to manage what success will look.

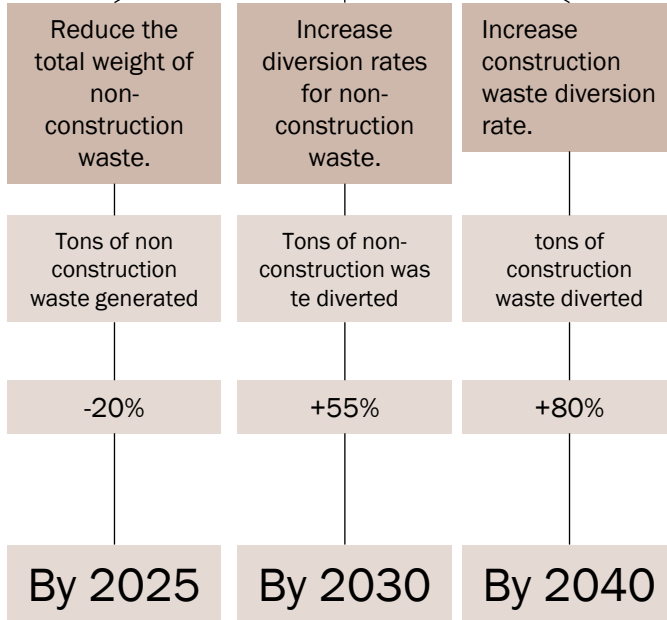
METRICS outline how the objective will be measured based on the data available or data required.

MILESTONES represent the timeline associated with each objective. These outline short-, mid-, and long-term strategies.



RECYCLING AND WASTE REDUCTION

Achieve zero waste to landfill.



ACTIONS are the initiatives that it will take to get meet your goal / outcome

Actions (per objective)

- ✓ **Complete an annual waste audit**
- ✓ **Implement a campus-wide recycling program paired with educational signage**
- ✓ **Continue paperless courses**
- ✓ **Create a district wide supply and furniture swap program**
- ✓ **Etc.**
- ✓ **Etc.**
- ✓ **Etc.**

IMPACT AREAS are the top VALUES as created collectively by the District and Colleges.

GOALS AND OUTCOMES establish long-term milestones that the District and Colleges will work toward. These were established by cross-referencing System and Stars frameworks with Impact Areas.

OBJECTIVES outline measurable actions were established by from District and Campus engagement, System mandates, and HiEd best practices.

MEASURES align with the objectives to manage what success will look.

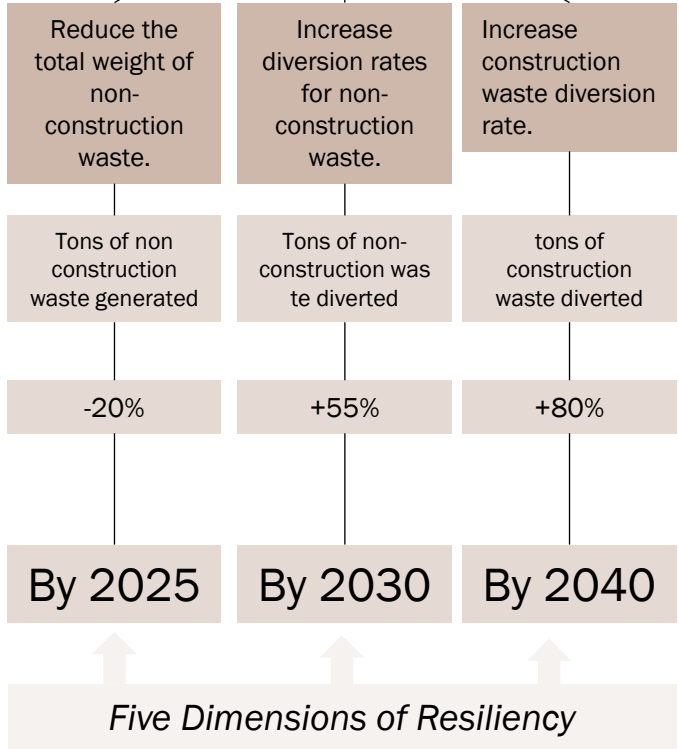
METRICS outline how the objective will be measured based on the data available or data required.

MILESTONES represent the timeline associated with each objective. These outline short-, mid-, and long-term strategies.



RECYCLING AND WASTE REDUCTION

Achieve zero waste to landfill.



ACTIONS are the initiatives that it will take to get meet your goal / outcome

Actions (per objective)

- ✓ **Complete an annual waste audit**
- ✓ **Implement a campus-wide recycling program paired with educational signage**
- ✓ **Continue paperless courses**
- ✓ **Create a district wide supply and furniture swap program**
- ✓ **Etc.**
- ✓ **Etc.**
- ✓ **Etc.**

IMPACT AREAS are the top VALUES as created collectively by the District and Colleges.

GOALS AND OUTCOMES establish long-term milestones that the District and Colleges will work toward. These were established by cross-referencing System and Stars frameworks with Impact Areas.

OBJECTIVES outline measurable actions were established by from District and Campus engagement, System mandates, and HiEd best practices.

MEASURES align with the objectives to manage what success will look.

METRICS outline how the objective will be measured based on the data available or data required.

MILESTONES represent the timeline associated with each objective. These outline short-, mid-, and long-term strategies.

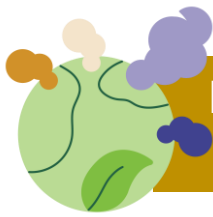
RESILIENCY overlays risk-management and the five dimensions of resiliency (Ecosystem, Financial, Human Health, Infrastructure, Social) into each Impact Area

Discussion Question:

Now that you've seen how the framework is planned, **what opportunities (+) or challenges (-) do you think we will run into with the planning and implementation of the S-CAP at RCC?**

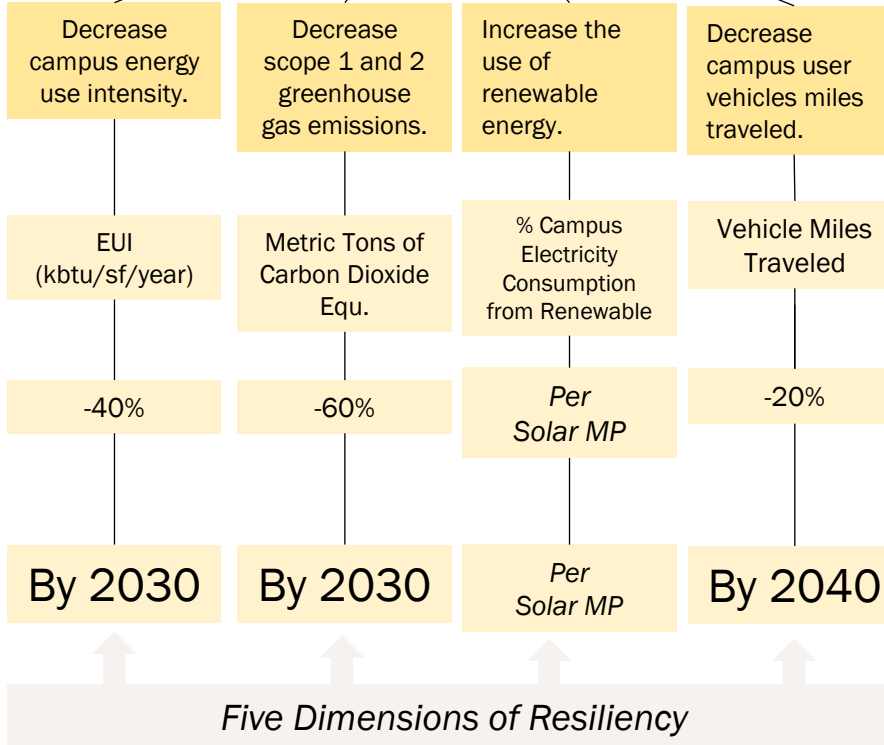
Discussion Question:

Given where the college is today meeting its sustainability goals, **how do you feel the RD + AS can best help with implementation of the plan?**



ENERGY USE, DECARBONIZATION, AND CLIMATE JUSTICE

Achieve net-zero emissions.



Actions (per objective)

- ✓ **Partner with local and regional transit to ensure routes are convenient / timely**
- ✓ **Align course schedules with transit schedules**

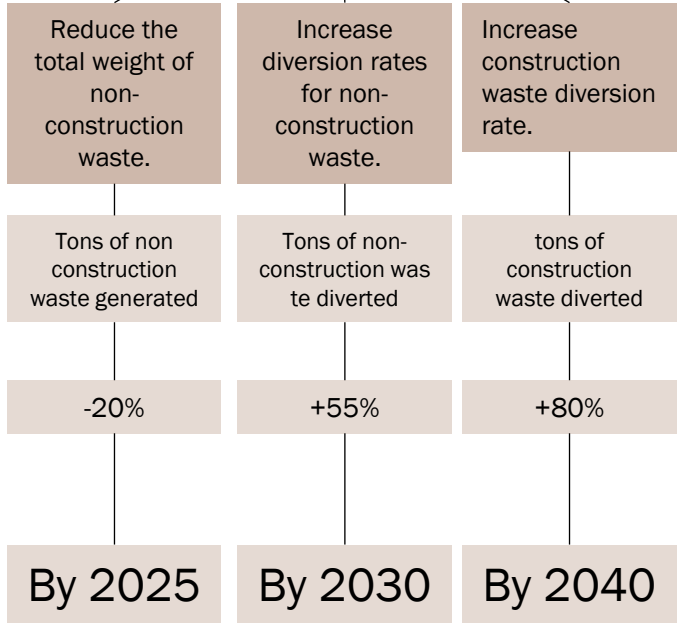
Other ideas from Open House:

- *Electric Charging Stations*
- *Energy Efficient Capital Improvement*
- *Promote alternatives to single occupant vehicles*



RECYCLING AND WASTE REDUCTION

Achieve zero waste to landfill.



Five Dimensions of Resiliency

Actions (per objective)

- ✓ **Complete an annual waste audit**
- ✓ **Implement a campus-wide recycling program paired with educational signage**
- ✓ **Continue paperless courses**
- ✓ **Create a district wide supply and furniture swap program**

Other ideas from Open House:

- *Add Food Waste*

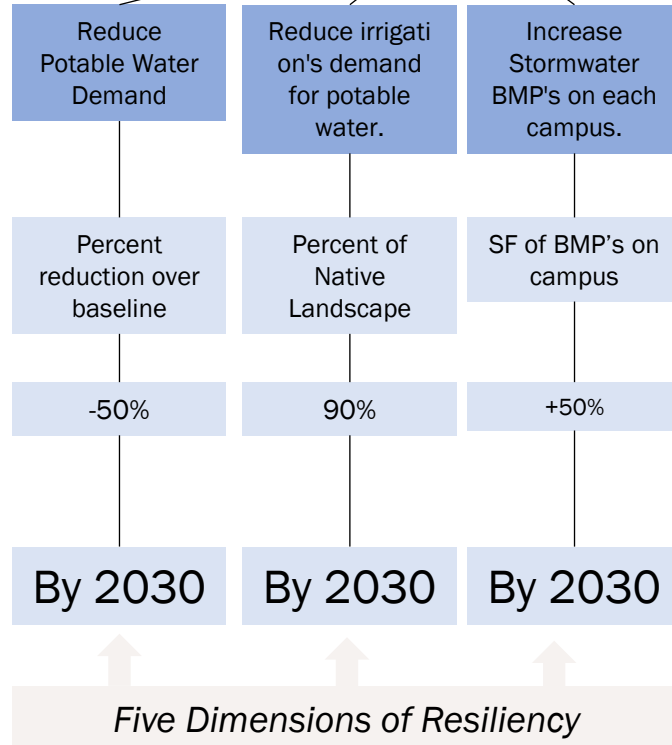


WATER AND ECO-SYSTEMS

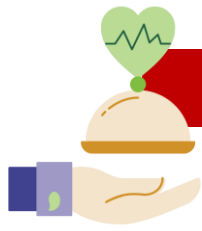
Create and implement a holistic approach to water services on campus to achieve water balance across the district.

Actions (per objective)

- ✓ **Benchmark potable water usage and create a water plan.**
- ✓ **Utilize water efficient fixtures in all new buildings and major renovations**



- Other ideas from Open House:
- *Meatless Mondays / Educate behavioral choices and the impact on environment*
 - *Mitigate the use of pesticides*

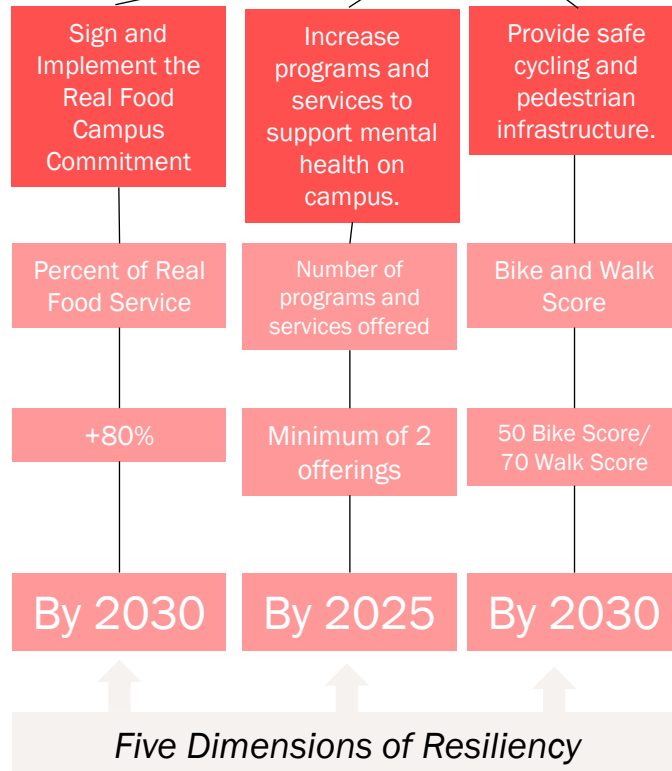


HEALTH AND WELL-BEING

Create an environment for campus and community to maintain their physical and emotional health and well-being.

Actions (per objective)

- ✓ **Benchmark sustainable food purchases in alignment with the Real Food Commitment guidelines.**
- ✓ **Benchmark mental health programs currently available and identify gaps of services or spaces needed to fulfill a more comprehensive**
- ✓ **Benchmark current bike and walk scores in the district and outlined improvement plans.**
- ✓ **Healthy meals available and affordable**



Other ideas from Open House:

- Gardens – Multiple use for food production and educational purposes
- Outreach – Educational signage connected to health and impact of your choices
- Food – Foodprint calculated with all food served on campus
- Air Quality

OUR PLANNING FRAMEWORK: Organizing the VALUES (Our Why)

Included

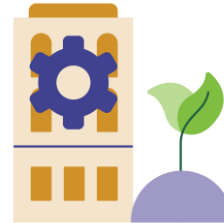
Includes the creation of goals and metrics within the S-CAP



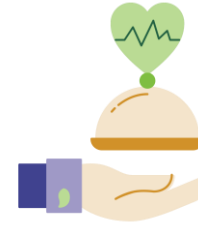
Decarbonization and Climate Justice



Waste / Procurement



Eco-systems / Water



Health and Well-being



Resiliency

Influenced

Would be included in an update with a sustainability lens / new plan



Academics



Engagement



Trust and Transparency

Reinforced

Planning and metrics already exist in other plans



Community Partnerships



Equity and Social Justice

Discussion Question:

From what you've seen so far, what goals or actions are you most passionate about incorporating into the S-CAP?

What is next for us?

Nov - Jan

Prioritization and Goals

TASKS

Finalizing College Profiles

Establishing Benchmarks

**Setting Goals – short-term
and long-term**
Where, When

**Dashboard Development
(IEMP and TCO)**

Feb - April

Action Plan and Implementation

TASKS

Action Planning
Who, What, How

Monitoring

**Dashboard Development
(IEMP and TCO)**

First Read – April 2022

WORKSHOP 01: MVC Top VALUES

Moreno Valley College

LEADS TO

OPERATIONAL OPTIMIZATION
How can your project optimize its energy use and reduce operational carbon emissions?

ENERGY COST REDUCTION
How can your project reduce its energy costs and operational carbon emissions?

DECARBONIZATION: ENERGY
Where is your project sourcing its energy from? How can your project replace fossil fuels with low to no-carbon energy sources?

DECARBONIZATION: TRANSPORTATION
How can your project reduce transportation-related emissions and transition away from fossil fuels?
emissions from purchased energy you everything else

DECARBONIZATION: MATERIALS
How can material selection reduce embodied carbon and operational carbon consumption to mitigate global warming?
Use & Maintenance End-of-Life Management New Material Extraction Embedded Carbon Manufacturing

WASTE
How can your project reduce waste and operational carbon emissions?

DECARBONIZATION: SEQUESTRATION
How can the outdoor landscape help sequester carbon and improve your site's outdoor environment?

DECARBONIZATION

LEADS TO

AIR QUALITY
How can your project improve air quality and reduce operational carbon emissions?

ECOSYSTEM SERVICES
How can your project improve ecosystem services and reduce operational carbon emissions?

BIOPHILIA
How can your project incorporate patterns and influences from nature into the design of the built environment? What natural experiences do users crave and how can it support occupant health and performance?

BUILDING ECOLOGY
How can intentional design choices at the building level, such as dark sky lighting and avian-friendly design, promote ecosystem health?

WORK WITH AND IN NATURE

OUTDOOR ENVIRONMENTAL QUALITY
How can your project's outdoor spaces restore ecology, build community, and create a strong sense of place?

BUILDING RESILIENCY
What intentional design features in a facility can help respond to and support the primary functions for users during and after an unexpected event?

ENVIRONMENT THAT SUPPORTS INDIVIDUALITY

LEADS TO

MULTI-CULTURAL RELEVANCE
How can your project design and program to be inclusive and responsive to the needs and preferences of diverse groups of users?

INDIVIDUAL FULFILLMENT
How can your project design and program to support the needs and preferences of individual users?

INCLUSION
How does your project look beyond its base program to provide opportunities for groups that may be marginalized? How can it create a sense of belonging for individuals of all backgrounds and identities?

SUPPORTS

VISUAL COMFORT
How can your project design and program to provide visual comfort and reduce glare and light pollution?

AIR QUALITY
How can your project design and program to improve air quality and reduce operational carbon emissions?

Given where the college is today meeting its sustainability goals, **how do you feel the RD + AS can best help with implementation of the plan?**

- Resource sub-committee -- how can your sub-committee help implement the plan?
 - Give stamp of approval for various projects we can ask how it aligns to the SCAP.
- In my role, I onboard new classified and managers, I can see making our sustainability initiative a topic to include in those discussions with new employees.
- We are still missing some basics as part of our campus culture (e.g., turning off lights, making fewer copies, reporting dripping faucets, etc.)
- **Always ask how does this resource approval impact the SCAP Impact Areas?**
- Behavioral Awareness