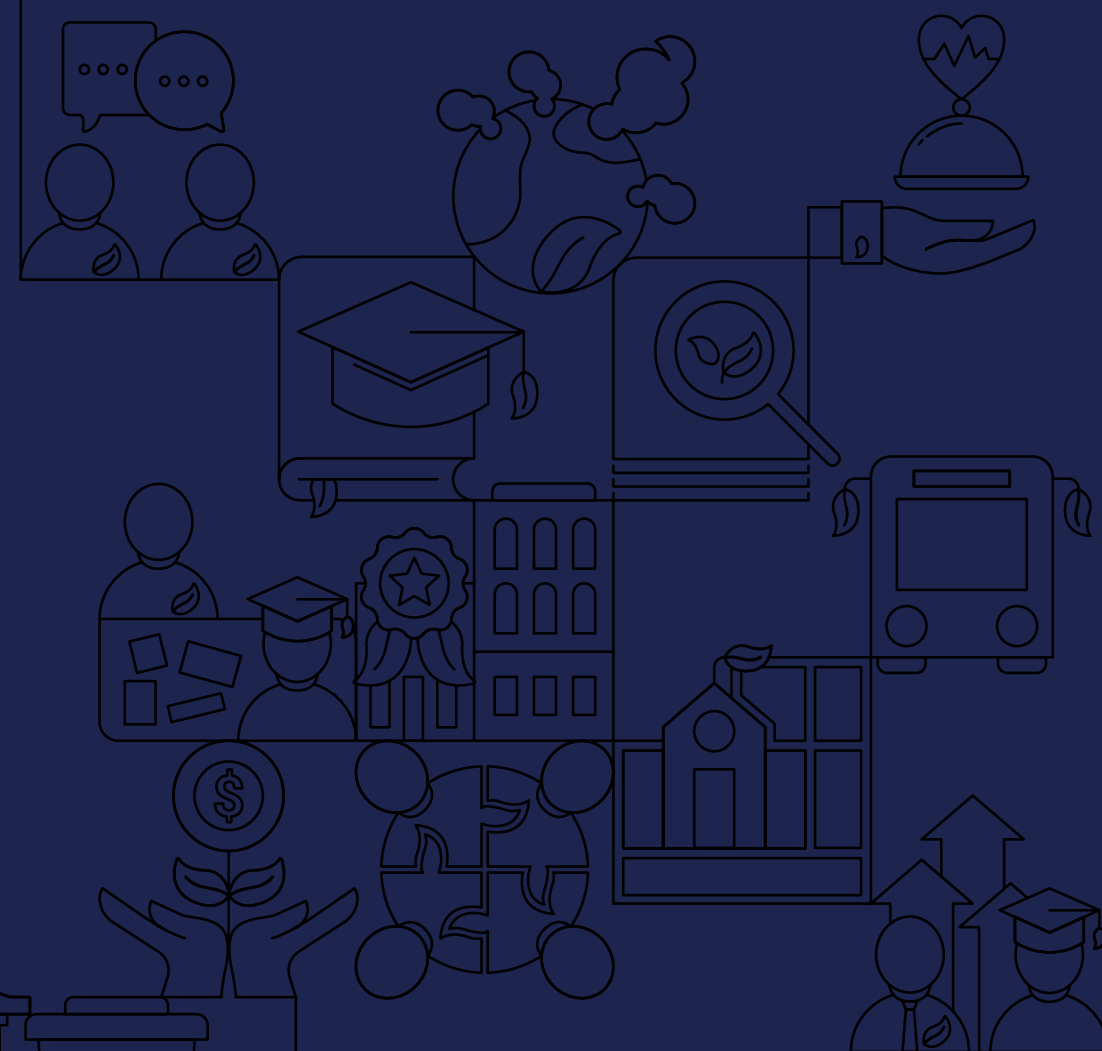
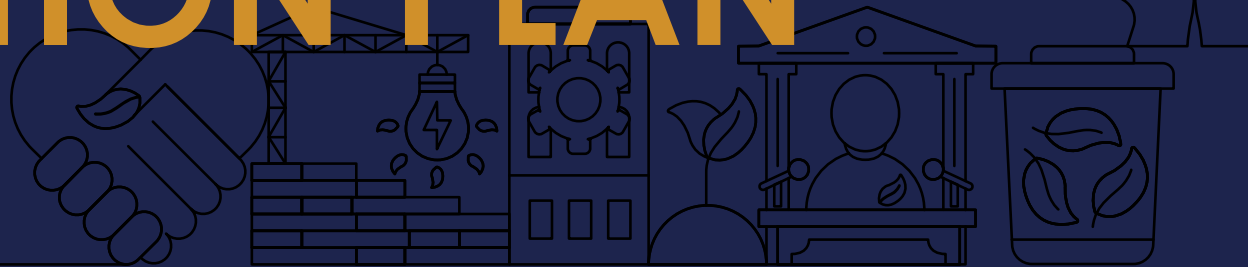


# 2021 SUSTAINABILITY AND CLIMATE ACTION PLAN





# Today's Agenda

**Reminder of our Purpose And Deliverables**

**Schedule and Progress Updates**

**College Engagement Update**

**Workshop 01: VALUES**

**Proposed Planning Framework**

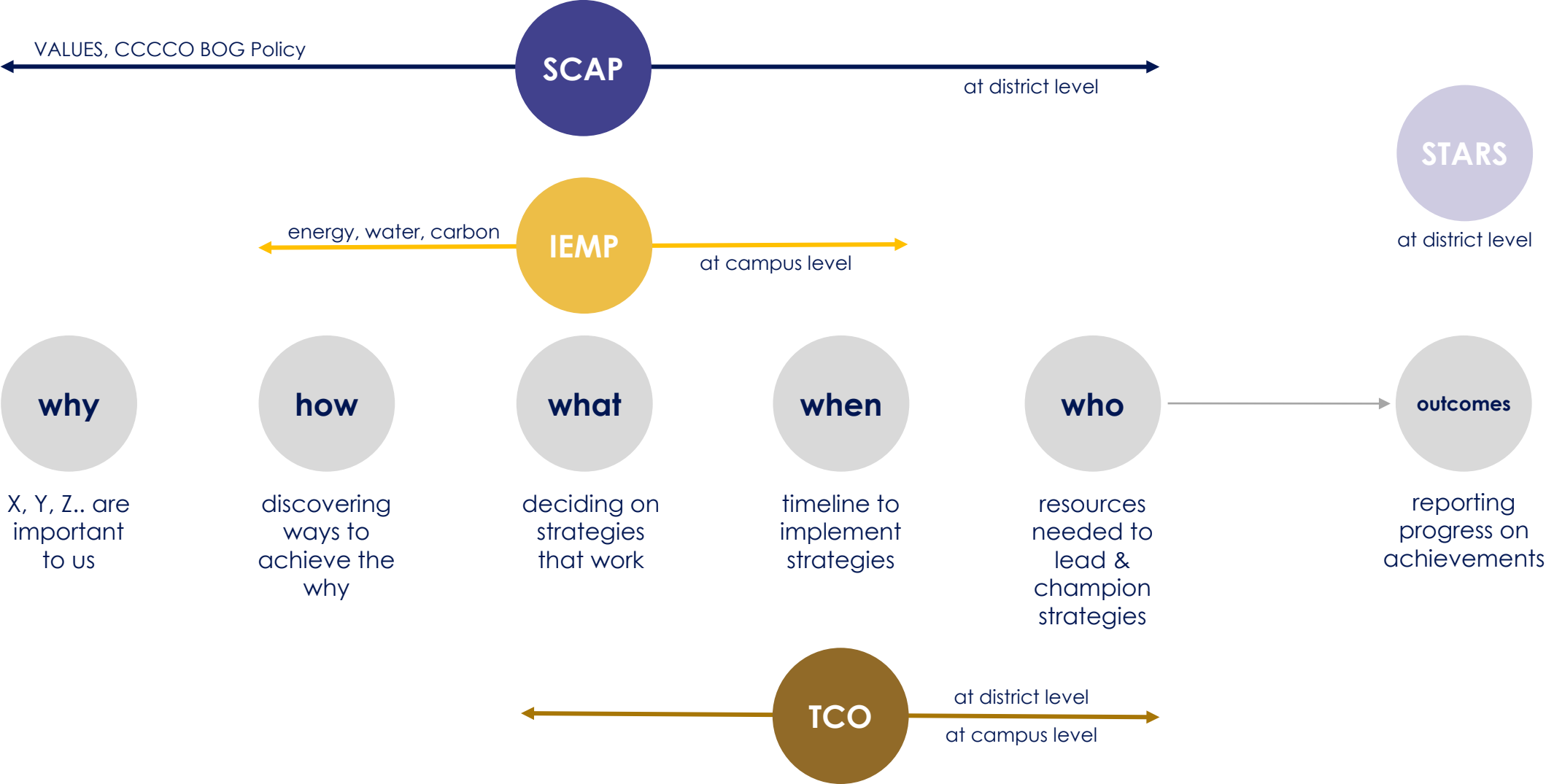
**Workshop 02: Open House**

**What's Next For Us?**

One goal of the Sustainability and Climate Action Plan is to identify ways for **environmental, social and financial sustainability** to be fostered at each campus in the district.



# Deliverables



VALUES, CCCCCO BOG Policy

**SCAP**

at district level

**STARS**

at district level

energy, water, carbon

**IEMP**

at campus level

**why**

X, Y, Z.. are important to us

**how**

discovering ways to achieve the why

**what**

deciding on strategies that work

**when**

timeline to implement strategies

**who**

resources needed to lead & champion strategies

**outcomes**

reporting progress on achievements

**TCO**

at district level

at campus level

# Our Project Schedule

	2021						2022						Project Complete May 31, 2023
	Jun.	Jul.	Aug.	Sep.	Oct.	Nov.	Dec.	Jan.	Feb.	Mar.	Apr.	May	Jun.
TASKS	TASK 1: Project Initiation			TASK 2: Research and Analysis			TASK 3: Implementation Phase						TASK 4: Verification and Monitoring
SCAP	Project Initiation			VALUES and Vision		Prioritization and Goals		Action Plan and Implementation			Final Plan		
IEMP				Campus Building Profiles	Energy Audits	Recommend ECMs			ECMs Finalized	Dashboard	Draft Plan	Final Plan	Final Approvals
TCO				Identify Assets	Classify Assets	Decision Criteria	Funding Analysis		Costing Assets	Asset Decisions		Comprehensive Asset Plan	Final Approvals
STARS													
Committee Workshop			Kick-Off Meeting	VALUES	Listening / Deep-Dives	Baselines		Goal Setting		Action Plan	Draft Plan	Final Plan	Final Approvals
Campus Work			President's Kick-off	VALUES	Open Houses	Campus Updates	-	-	College Action Plan		Draft Plan		Final Approvals
Deliverable Due													

**We are here.**

# Tracking Our Progress

## PHASE 01: VISIONING AND VALUES

September - October

- ✓ ~~Lead Sustainability VALUES Workshop~~
- ✓ ~~Host listening tours, focus groups and open forums with campus community~~
- ✓ ~~Benchmark Energy Data for all campuses~~
- ✓ Create Campus Building Profiles

## PHASE 02: PRIORITIES AND GOALS

November - January

- ✓ Synthesize the top VALUES for the District
- ✓ Establish priorities and discuss goals for short, mid and long-term
- ✓ Develop cost models around goals

## PHASE 03: ACTION PLAN AND IMPLEMENTATION

February - April

- ✓ Document long-term vision and goals
- ✓ Identify short-term, mid-term and long-term initiatives to meet district goals.
- ✓ Develop total cost of ownership cost models for each goal, including personnel needed
- ✓ Present Draft Of Deliverables

## PHASE 04: FINAL PLAN AND APPROVALS

May - June

- ✓ Final presentation adoption and approval
- ✓ Establish training needs for key district personnel
- ✓ Visualize Monitoring Dashboard of the Plans
- ✓ Fine tune and update the dashboard

# Integrated Energy Master Plan

- a long-term strategy of achieving significant reductions in energy, water, greenhouse gas emissions.



Discovery

## Data Points

- ✓ Electricity Bills
- ✓ Gas Bills
- ✓ Water Bills
- ✓ Facility Manager Interviews
- ✓ Site Walkthrough

## Data Gaps

- Meter Assignments
- Facility Manager Verification

# Total Cost of Ownership

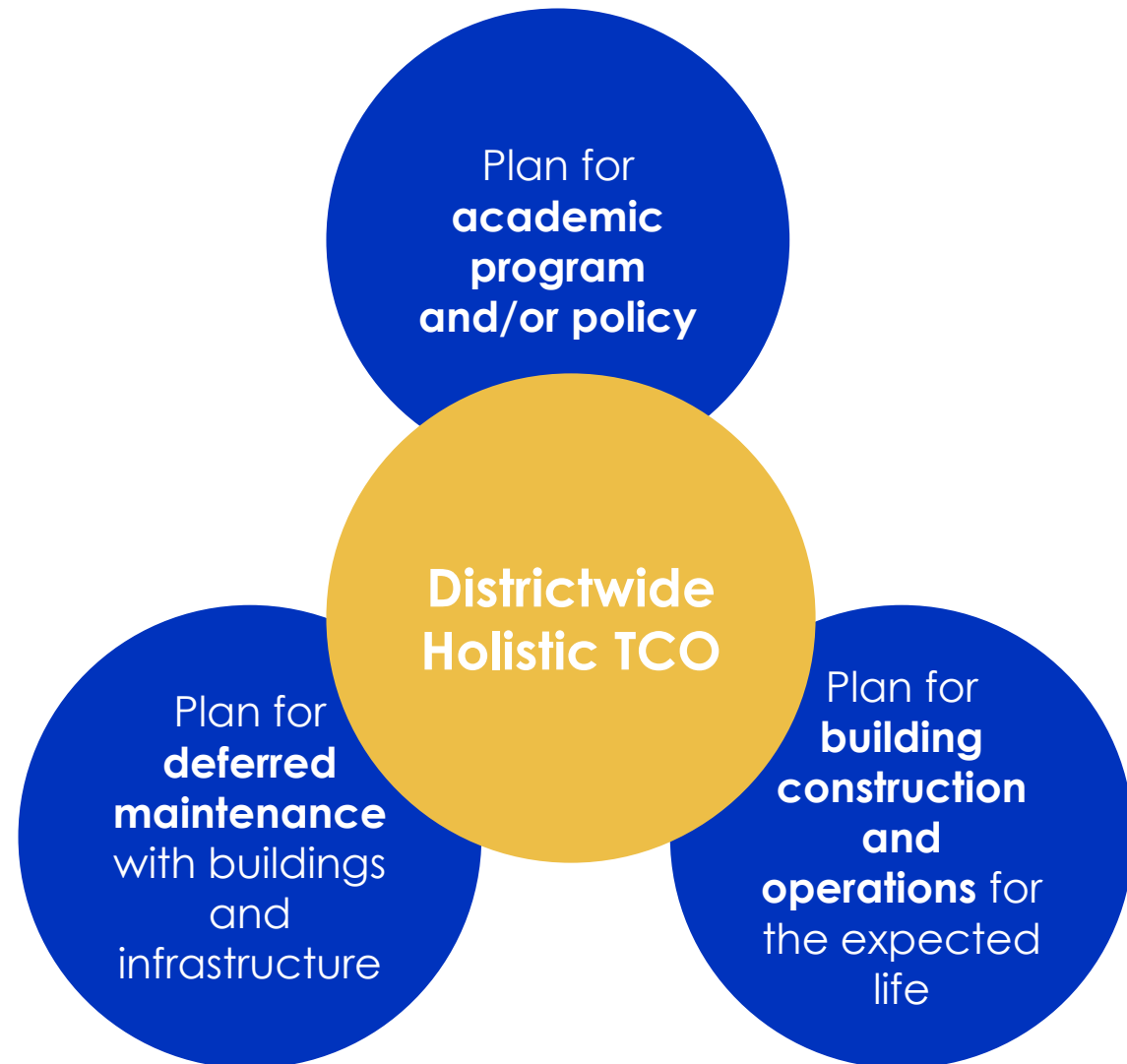
Initial Cost

+

Operational Cost

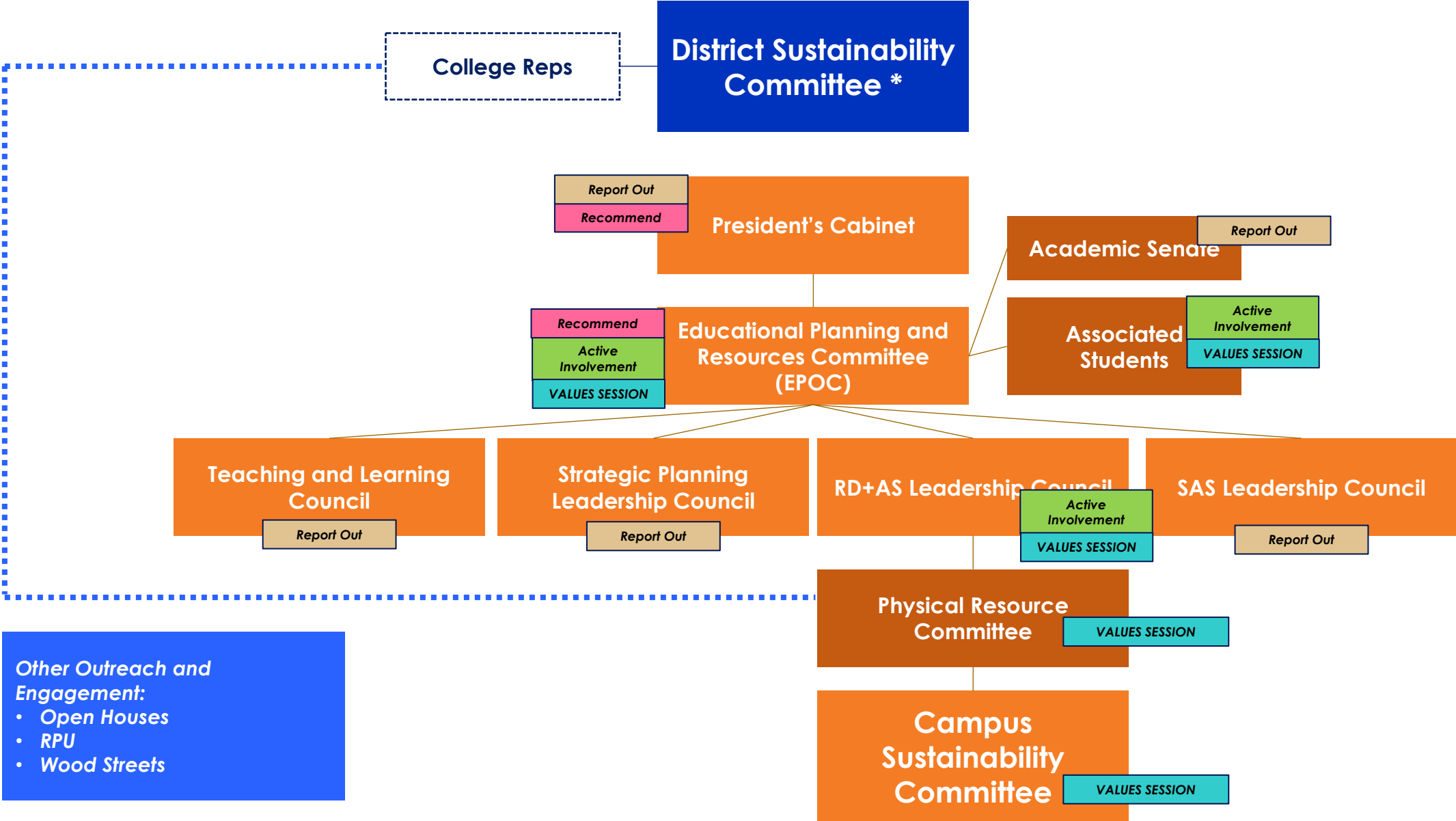
(including human resources  
and technology needed)

**TCO is a requirement for  
Accreditation as well as  
Bond Measures**





# Riverside City College: Engagement Structure



# Riverside City College: Engagement to Date

## KICK-OFF

### KICK-OFF MEETINGS

**President's Cabinet**  
September 1, 2021

**Campus Site Visits**  
September 15-16, 2021

## WORKSHOP 01

### VALUES WORKSHOPS

**Associated Students**  
September 24, 2021

**EPOC, RD+AS, Physical  
Resources Council,  
Campus Sustainability  
Committee (x2)**  
October 1, 2021

## WORKSHOP 02

### OPEN HOUSE

**Open to all Students,  
Faculty, and Staff**  
October 21, 2021

## WORKSHOP 03

### REPORT BACK AND BENCHMARKING

**EPOC**  
November 8, 2021

**President's Cabinet**  
November 17, 2021

**Sustainability  
Committee**  
November 18, 2021

**RD+AS\***  
November 29, 2021

*\*workshop*

# WORKSHOP 01: VALUES



Decarbonization:  
Transportation  
Multi-Modal  
Transportation  
Walkability and Safety

**ACCESS + MOBILITY**

How can your project advocate and celebrate transit-oriented design, connections between transit hubs, and walkable communities?



Community Access  
Community Partnerships  
Neighborhood Vitality  
Transparency:  
Decision-Making

**COMMUNITY CONNECTOR**

How can your project support its surrounding community, build community partnerships, and connect residents to shared resources?



Beauty & Inspiration  
Historical Context of Place  
Inclusion  
Individual vs. Collective  
Placemaking  
Multi-Cultural Relevance  
Organizational  
Transformation

**CULTURE + IDENTITY**

How can your project celebrate its history and cultural context to develop a strong sense of place that speaks to the identities of occupants and surrounding communities?



Building Ecology  
Decarbonization:  
Sequestration  
Ecosystem Services  
Public Space  
Site Ecology

**OUTDOOR ENVIRONMENTAL QUALITY**

How can your project's outdoor spaces restore ecology, build community, and create a strong sense of place?



Climate Justice  
Economic Development  
Programming  
Equitable Development  
Siting  
Equity  
Land Use  
Social Justice

**EQUITABLE DEVELOPMENT**

How can your project promote affordability, provide access to opportunity, and advocate for those in need?



Active Spaces  
Biophilia  
Evidence-Based  
Modalities  
Nourishment  
Play

**HEALTH + WELL-BEING**

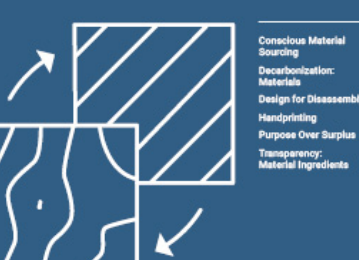
How can intentional design features actively promote users' emotional and physical well-being and encourage them to make healthier choices?



Acoustic Comfort  
Air Quality  
Thermal Comfort  
Visual Comfort

**INDOOR ENVIRONMENTAL QUALITY**

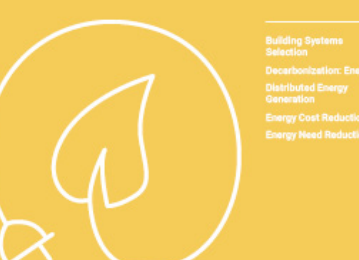
How can your project support user comfort and productivity?



Conscious Material  
Sourcing  
Decarbonization:  
Materials  
Design for Disassembly  
Handprinting  
Purpose Over Surplus  
Transparency:  
Material Ingredients

**MATERIALS IMPACT**

How do your materials choices support healthy ecology, communities, and economies?



Building Systems  
Selection  
Decarbonization: Energy  
Distributed Energy  
Generation  
Energy Cost Reduction  
Energy Need Reduction

**ENERGY**

How can changes in energy infrastructure support your broader mission, reduce costs, and build a healthier planet?



Building Resiliency  
Community Resiliency  
Economic Resiliency  
Emergency Planning  
Emotional Resiliency  
Risk Adaptation &  
Mitigation

**RESILIENCY**


How can your project help its users and community adapt to and recover from unexpected situations?



Conscious Cleaning  
& Upkeep Goods &  
Supplies  
Operational Optimization  
Regulatory Partnerships  
Safety & Security  
Transparency: Building  
Performance  
Waste

**PROCUREMENT + OPERATIONS**

How can procurement, building operations, and management practices support your broader project goals?



(Storm) Water  
Management  
Hydrological Balance  
Potable Water Quality  
Water Context of Place  
Water Self-Sufficiency

**WATER**

What connections to water are important to your users and neighboring communities?

# WORKSHOP 01: RCC Top VALUES

## Riverside City College

### TRUST AND TRANSPARENCY IN WASTE, PROCUREMENT AND OPERATIONS

**TRANSPARENCY: DECISION-MAKING**  
How can you keep the community informed of decision-making processes?

**PROCUREMENT + OPERATIONS**  
How can you streamline building operations and management systems to support your business goals?

**WASTE**  
What quantity of program waste are you generating and how are you managing, recycling or re-using it?

**BEAUTY + INSPIRATION**  
How can beauty enhance and the built environment inspire and enhance user health and productivity, and how can it be designed and implemented to address their full spectrum of needs and preferences in your classroom?

**DESIGN FOR DISASSEMBLY**  
How can you design buildings that are easy to disassemble and reuse?

**DESIGN FOR PURPOSE**  
How can you design buildings that are easy to adapt and reuse for other purposes?

**GOODS + SUPPLIES**  
How can you design buildings that are easy to supply and maintain?

**REGULATORY PARTNERSHIPS**  
How can you design buildings that are easy to regulate and maintain?

### RESILIENCY TO BETTER ADDRESS THE UNKNOWN

**EMERGENCY PLANNING**  
How can we define a clear plan of action for operating your building / site during a short term or long term hazard event?

**RESILIENCY**  
How can your program help to sustain communities through times of crisis and uncertainty?

**RISK ADAPTATION + MITIGATION**  
How can you design buildings that are easy to adapt and maintain?

**SAFETY + SECURITY**  
How can you design buildings that are easy to secure and maintain?

### DECARBONIZATION TAKES COMMUNITY SUPPORT

**DECARBONIZATION: ENERGY**  
Where is your project sourcing its energy from? How can your project replace fossil fuels with low to no-carbon energy sources?

**ENERGY**  
How can changes in energy infrastructure support your broader mission, reduce costs, and build a healthier planet?

**ACCESS + MOBILITY**  
How can your project advocate and celebrate transit-oriented design, connections between transit hubs, and walkable communities?

**OPERATIONAL OPTIMIZATION**  
How can you design buildings that are easy to operate and maintain?

**MULTI-MODAL TRANSPORTATION**  
How can you design buildings that are easy to access and maintain?

**COMMUNITY PARTNERSHIPS**  
How can you design buildings that are easy to share and maintain?

**DECARBONIZATION: TRANSPORTATION**  
How can you design buildings that are easy to access and maintain?

**COMMUNITY ACCESS**  
How can you design buildings that are easy to access and maintain?

### HEALTH AND WELL-BEING OCCURS AT ALL SCALES - HUMAN, CAMPUS, AND COMMUNITY

**INDOOR ENVIRONMENTAL QUALITY**  
How can you design buildings that are easy to breathe and maintain?

**BIOPHILIA**  
How can you design buildings that are easy to breathe and maintain?

**ACTIVE SPACES**  
How can you design buildings that are easy to breathe and maintain?

**INDIVIDUAL FULFILLMENT**  
How can you design buildings that are easy to breathe and maintain?

**PUBLIC SPACE**  
How can you design buildings that are easy to breathe and maintain?

**COMMUNITY CONNECTOR**  
How can you design buildings that are easy to breathe and maintain?

**HEALTH + WELL-BEING**  
How can intent-based design "business as usual" actively promote user's emotional and physical well-being and encourage them to make healthier choices?

### WHEN EQUITY IS AT THE CENTER, INCLUSION, SOCIAL AND CLIMATE JUSTICE ARE POSSIBLE

**EQUITY**  
How is your project allocating services, resources, and opportunities in a just and equitable manner, and prioritizing marginalized groups?

**CULTURE + IDENTITY**  
How can you design buildings that are easy to breathe and maintain?

**ORGANIZATIONAL TRANSFORMATION**  
How can you design buildings that are easy to breathe and maintain?

**MULTI-CULTURAL RELEVANCE**  
How can you design buildings that are easy to breathe and maintain?

**EDUCABLE DEVELOPMENT**  
How can you design buildings that are easy to breathe and maintain?

**CLIMATE JUSTICE**  
How can you design buildings that are easy to breathe and maintain?

**SOCIAL JUSTICE**  
How can you design buildings that are easy to breathe and maintain?

**INCLUSION**  
How can you design buildings that are easy to breathe and maintain?

### THINK OF WATER AS A SYSTEM AND RESOURCE - SUPPORT BEST-PRACTICES!

**WATER SELF-SUFFICIENCY**  
How can your project ensure a reliable water supply regardless of external circumstances and systems? What is your tolerance for water systems innovation to achieve water self-sufficiency?

**Ties to curriculum and events!**

**ECOSYSTEM SERVICES**  
How can you design buildings that are easy to breathe and maintain?

**BEAUTY + INSPIRATION**  
How can you design buildings that are easy to breathe and maintain?

**WATER CONTEXT OFFICE**  
How can you design buildings that are easy to breathe and maintain?

# WORKSHOP 01: All Students (RCCD) Top VALUES

## Students

### EQUITABLE & INCLUSIVE EXPERIENCE FOR ALL

**EQUITY**  
How do your programs, services, resources, and spaces provide equal and equitable access and participation for all students?

**INDIVIDUAL FULFILLMENT**  
How do you ensure support for all of individual goals, professional, intellectual, and experiential? How do you support and encourage students to reach their own goals?

**MULTI-CULTURAL RELEVANCE**  
How do you ensure relevance for all students in terms of content, delivery, and space? How do you ensure that all students feel welcomed and supported in your programs and spaces?

**INCLUSION**  
How do you ensure that all students, including those with disabilities, are fully included in your programs and spaces? How do you ensure that all students feel welcomed and supported in your programs and spaces?

**INDIVIDUAL VS COLLECTIVE PLACEMAKING**  
How do you ensure that all students, including those with disabilities, are fully included in your programs and spaces? How do you ensure that all students feel welcomed and supported in your programs and spaces?

**equity informed decision making**  
equity is the outcome of inclusion

### ECOSYSTEM AND WATER

**WATER SELF-SUFFICIENCY**  
How do you ensure that all students, including those with disabilities, are fully included in your programs and spaces? How do you ensure that all students feel welcomed and supported in your programs and spaces?

**BUILDING RESILIENCE**  
How do you ensure that all students, including those with disabilities, are fully included in your programs and spaces? How do you ensure that all students feel welcomed and supported in your programs and spaces?

**ECOSYSTEM SERVICES**  
How do you ensure that all students, including those with disabilities, are fully included in your programs and spaces? How do you ensure that all students feel welcomed and supported in your programs and spaces?

**HYDROLOGICAL SERVICES**  
How do you ensure that all students, including those with disabilities, are fully included in your programs and spaces? How do you ensure that all students feel welcomed and supported in your programs and spaces?

### WASTE REDUCTION

**QUALITY + INTEGRATION**  
How do you ensure that all students, including those with disabilities, are fully included in your programs and spaces? How do you ensure that all students feel welcomed and supported in your programs and spaces?

**WASTE**  
How do you ensure that all students, including those with disabilities, are fully included in your programs and spaces? How do you ensure that all students feel welcomed and supported in your programs and spaces?

**GOODS + SUPPLIES**  
How do you ensure that all students, including those with disabilities, are fully included in your programs and spaces? How do you ensure that all students feel welcomed and supported in your programs and spaces?

**CONSCIOUS CLEANING + UPKEEP**  
How do you ensure that all students, including those with disabilities, are fully included in your programs and spaces? How do you ensure that all students feel welcomed and supported in your programs and spaces?

### TRANSPARENCY AND SAFETY

**COMMUNITY PARTNERSHIPS**  
How do you ensure that all students, including those with disabilities, are fully included in your programs and spaces? How do you ensure that all students feel welcomed and supported in your programs and spaces?

**TRANSPARENCY: BUILDING PERFORMANCE**  
How do you ensure that all students, including those with disabilities, are fully included in your programs and spaces? How do you ensure that all students feel welcomed and supported in your programs and spaces?

**REGULATORY PARTNERSHIPS**  
How do you ensure that all students, including those with disabilities, are fully included in your programs and spaces? How do you ensure that all students feel welcomed and supported in your programs and spaces?

**SAFETY + SECURITY**  
How do you ensure that all students, including those with disabilities, are fully included in your programs and spaces? How do you ensure that all students feel welcomed and supported in your programs and spaces?

### DECARBONIZATION TAKES COMMUNITY SUPPORT

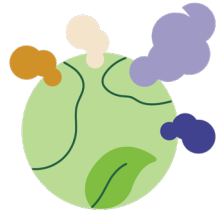
**DECARBONIZATION: ENERGY**  
How do you ensure that all students, including those with disabilities, are fully included in your programs and spaces? How do you ensure that all students feel welcomed and supported in your programs and spaces?

**ENERGY**  
How do you ensure that all students, including those with disabilities, are fully included in your programs and spaces? How do you ensure that all students feel welcomed and supported in your programs and spaces?

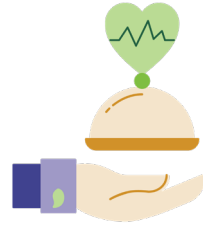
# OUR PLANNING FRAMEWORK: Organizing the VALUES (Our Why)

## Included

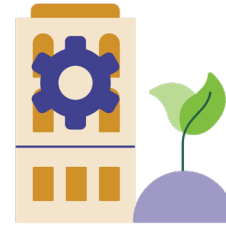
*Includes the creation of goals and metrics within the S-CAP*



Decarbonization and Climate Justice



Health and Well-being



Eco-systems / Water



Waste / Procurement



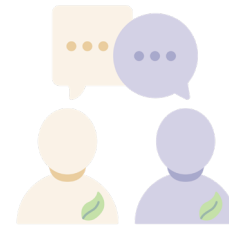
Resiliency

## Influenced

*Would be included in an update with a sustainability lens / new plan*



Academics



Engagement



Trust and Transparency

## Reinforced

*Planning and metrics already exist in other plans*



Community Partnerships



Equity and Social Justice



# 1 DECARBONIZATION AND CLIMATE JUSTICE

**Energy Use, Decarbonization and Climate Justice**

15 MINS

## WHAT BARRIERS KEEP YOU FROM USING A MORE SUSTAINABLE COMMUTING OPTION?

More electrical vehicle chargers	Safety (both in terms of infrastructure and personal safety standpoint)	Lack of bike lanes on my path to campus	Not coordinated schedules with other employees	Metrolink not available for local commute.
Time! The bus would take nearly 3 times as long as my car.	Lack of public transportation at the right hours	Success from Jennifer switching to an electric vehicle.	Showers Facilities needed for bikers	public transportation is not very equitable for people with disabilities - this is a real

## WHAT ARE WAYS THAT YOU AS AN INDIVIDUAL CAN REDUCE THE AMOUNT OF ENERGY YOU USE?

Turn off lights	Buy less stuff	Close exterior doors to keep heat and ac in the building	Need to change this. The library needs the all the lights switched off and windows. We also need the computers etc. All 250 of them. We have asked for them to be changed but got no response.	minimizing energy use to avoid building to be inefficiently. We have some computer building that we have to manage so making adjustments such as right to use the system installed.
Minimize a/c use in summer and heat use in winter	More solar-powered lights etc.?	Address on the solar. We have a very large campus that could use more solar. We could also focus this into a learning opportunity for our community and students.	At the Culinary Academy, the City of Riverside requires us to recycle food waste separately from regular trash.	

## DESCRIBE HOW YOU FEEL DECARBONIZATION AND CLIMATE JUSTICE.

Land use to bring down the impact of heat island, even to the vehicles.				
So you want solar over the vehicle parking areas.				

# 2 RECYCLING AND WASTE REDUCTION

**Recycling and Waste Reduction**

15 MINS

## WHAT IMPROVEMENTS WOULD YOU MAKE TO RCC'S RECYCLING PROGRAM?

Actual have a plan for recycling!	We do not recycle. I have seen trash being thrown out right along with the recycle bins. When asked, they say they do not have time to do the trash bins or have multiple bins for each.	We need a real recycling program - mixed use and glass waste bin next to every landfill bin.		
Need to make sure our campus community understands how to recycle and that it is actually BEING recycled. People have had trouble to recycle glass, and this has not separated their staff.	Started a dry waste recycling program in the ceramics studio but lack the equipment to do it on the scale that's necessary for the ceramics program.	Signage with examples/pictures of commonly accumulated waste products.	Our waste management needs to support the containers in their effort to manage the recycling. They have to be given the time to do so and the management has to embrace the recycling culture.	It would be good, too, if the campus community was educated as to what happens when the recycling is contaminated.

## WHAT WAYS CAN YOU BE MORE INTENTIONAL ABOUT REDUCING THE AMOUNT OF WASTE ON CAMPUS?

Packaging!!!!	Change mindset. There is a tremendous amount of wasteful behavior on campus. Very disposable mindset.	Definitely education - for EVERYONE on campus from faculty to classified professionals to students. What can go in which bin and why it's important.	Reusable cutlery and plates at least for catering on campus.	It would be good, too, if the campus community was educated as to what happens when the recycling is contaminated.
Go paperless in our processes	Refillable whiteboard markers	Bamboo utensils	And it should. The ground here by the library in the glow area is decomposed granite. We have a reed and source. They need connecting.	Related to Food Waste: Food waste goes into the trash. It does not get composted.

## HAVE YOU TAKEN ANY COURSES THAT HAVE ADDRESSED WASTE MANAGEMENT?

As a geography and environmental major - focuses on sustainability topics. Scale of environments from individual to planet. Impact of little changes on larger systems.	Educating students can turnaround and educate family and friends.			
Food Rescue and Waste Reduction Ambassador program through City of Riverside				

# 3 WATER AND ECO-SYSTEMS

**Water and Eco-Systems**

15 MINS

## HAVE YOU TAKEN ANY COURSES / ENGAGEMENT THAT HAVE ADDRESSED WATER AND ECO-SYSTEMS?

Our Sustainability Champions program hosted a drought tolerant landscaping workshop this summer but it wasn't super well attended.				
Highlight great stories like Brian's ceramic 3-bucket system	everything is a teaching experience	Share what facilities is doing - recycled water @ MVC		

## WHAT ARE WAYS THAT YOU AS AN INDIVIDUAL CAN REDUCE THE AMOUNT OF WATER YOU USE?

Pay attention to drips/leaks, broken sprinklers/geysers	Eat less meat (so offer more / more affordable veggie options in campus cafeteria)	Native plants bring native pollinators!		

## WHAT SHOULD RIVERSIDE CITY COLLEGE DO TO REDUCE THE AMOUNT OF WATER USED?

Have water filters set up at water fountains and buildings with need	Pay attention to drips/leaks, broken sprinklers/geysers	We have a large drainage cistern that is centered in that could be a good place to have an opportunity for change.	Collect rainwater on campus	Our current is a great opportunity to collect some ground water for distribution back to our water table or use for later when we need our plants watering.
3 bucket clean up system in our glaze room.	Drought-tolerant plants, succulents	Collect the colder water when waiting for it to heat up and use that colder water to water plants.	Ditch the grass!	It would be nice to have a water feature (fountains) that uses recycled water. It makes something people powered.

# 4 HEALTH AND WELL-BEING

**Health and Well-being**

15 MINS

## WHAT ARE WAYS THAT YOU DE-STRESS ON CAMPUS TODAY? WHAT ARE IDEAS TO IMPROVE?

FUTURE IDEA: Recycled water feature	People like the grass in the Quad	Access to Health and Wellness center for administrative professionals, faculty, administrators - currently only for athletes and classes	I go to 'green' areas like by the gym.	Outdoor gym
-------------------------------------	-----------------------------------	--	--	-------------

## WHAT ACTIVE SPACES DO YOU USE ON CAMPUS TO FEEL PHYSICALLY WELL?

FUTURE IDEA: Something people powered	FUTURE IDEA: It would be nice to have some outdoor patio areas where we are allowed to take a break we do not have a place where we can just charge.	REFERENCE: There's a great place in Tulsa, Oklahoma called The Gathering. I think. Amazing interactive outdoor space, beautiful.		
---------------------------------------	--	--	--	--

## ARE THERE PLACES ON CAMPUS THAT YOU FIND 'COMFORTABLE'? WHAT MAKES THEM FEEL COMFY?

Sounds can be calming and restorative, too.			OTHER IDEAS:	we need better open spaces that have calming sounds or smells (ie plants). Most are just set with concrete benches and grass.
				what can we do to help make our outdoor more environmentally friendly? We can be more aware of the process. It is ongoing.



# What is next for us?

Board Check in

## UPCOMING MEETINGS

**DSPC**  
December 10, 2021

**CHANCELLOR'S CABINET**  
December 20, 2021

**BOARD COMMITTEE**  
January 4, 2022

PLUS... **FPDC** and **DBAC**

Prioritization and Goals

## TASKS

**Finalizing College Profiles**

**Establishing Benchmarking  
and Setting our Baselines**

**Setting Goals – short-term  
and long-term**  
Where, When

**Dashboard Development  
(IEMP and TCO)**

Action Plan and Implementation

## TASKS

**Action Planning**  
Who, What, How

**Monitoring**

**Dashboard Development  
(IEMP and TCO)**

**First Read – April 2022**

