
Meeting Minutes



Architecture Engineering Planning Interiors

1650 Spruce Street, Suite 300
Riverside, CA 92507

Meeting Date	09.23.2021
To	Hussain Agah, Mehran Mohtasham, Myra Nava
From	DLR Group
Location	via ZOOM
Project	RCCD: Sustainability and Climate Action Plan
Project No.	N/A
Attendees	Linsey Graft, Lindsey Perez, Shona O'Dea, Prem Sundharam, Chris Flynn, Hussain Agah, Majd Askar, Mahdi Afkhamiaghda, Isheanesu Tendayi, Mehran Mohtasham, Michael Collins, Courtney Buchanan, Christopher Lawrence, Esmeralda Abejar, Mike Angeles, Ana Molina, Steven Marshall, Alex Zadeh, Teresa Friedrich.
Purpose	Norco Resource Council VALUES Session

Agenda:

- **Welcome: Introduction of the project (10 min)**
- **Activity: Prioritize your VALUES (60 mins)**
- Breakout: Prioritize VALUES themes (50 min)
 - *What does each group value?*
 - *What themes matter most?*
- Regroup: Share out and Reflections (10 min)
 - VALUES SHARE: 4 min
 - REFLECTIONS: 6 min
 - *What did you hear that surprised you, excited you, made you think?*
 - *Now that you've heard everyone else, did you have any thoughts?*

Link to Mural for Activity for Viewing only:

<https://app.mural.co/t/firstworkspace3639/m/firstworkspace3639/1632261792237/dec26a4d12bf0b2e19f5dc3d323907c0e88587d2?sender=lperez9220>

Minutes:

- Welcome (**See attached slides, 1-10**)
 - All meetings will be recorded, and minutes posted for anyone unable to attend sessions.
 - DLR Group provided a brief overview the Integrated Planning Process, how the deliverables of this project will speak to other plans such as the District Strategic Plan, College's Strategic Plan, etc.
 - DLR Group described the deliverables of this project and denoted this process will have a lot of terminology we will review.
 - DLR Group introduced stamp features of Zoom to allow attendees to participate and engage in the VALUES activity.
- Activity (**See Notes from each breakout group**)
 - Attendees were divided into three groups and sent out into breakout rooms to learn more about the VALUES topics and prioritize which VALUES is where the District Sustainability Committee believes the district priorities around Sustainability and Climate Action should be invested.
- **Group 1**
 - STEP 1: Group 1 reviewed all 12 VALUES topics and stamped a heart of a card resonated with them and a question mark if they wanted more information. Group 1 drew many connections between the cards.

17

The grid consists of 12 cards, each with a title and a question:

- 1. PROCUREMENT + OPERATIONS**: How can procurement, building operations, and management practices support your broader program goals?
- 2. SAFETY + SECURITY**: How can the design of a facility enable safe, comfortable and secure environments for all users?
- 3. CONSCIOUS CLEANING + UPKEEP**: What aspects and programs in your project can minimize cleaning, maintenance, and pest management needs? Can you use products/supplies that protect human and ecological health?
- 4. TRANSPARENCY: BUILDING PERFORMANCE**: What aspects of building performance can be transparent and communicated to users?
- 5. GOODS + SUPPLIES**: How can you intentionally procure for all our stakeholders, and especially in a way that eliminates waste and extends the lifecycle for replacement?
- 6. OPERATIONAL OPTIMIZATION**: How can building systems intelligently connect and respond to various in-building operations and performance? Can proactive measures be taken to meet user needs and ensure continued operation?
- 7. REGULATORY PARTNERSHIP**: How can your project take advantage of local programs and incentives to procure more sustainable infrastructure and resources?
- 8. WASTE**: What aspects and programs in the facility can promote recycling, sorting, and waste reduction?

Callout boxes on the left:

- As we use public dollars to build out our campus -- reporting sustainability metrics out. This is something we can be proud of our reporting
- Good & Supplies - nothing goes to waste (technology, furniture, etc). What is the end of life of these good mean?
- How we handle waste or prevent waste for future generations?

STEP TWO: DISCUSS Using the cards that resonated with the group in this step we will spend time prioritizing. Now imagine you were investing budget in 6 goals that would connect Sustainability to User Experience. Which VALUE would have the most impact for your investment?

TOP 6 CARDS

The main grid contains the following cards and highlights:

- Card 7 (top left):** DECARBONIZATION TRANSPORTATION, ACCESS + MOBILITY, MULTI-MODAL TRANSPORTATION, WALKABILITY & SAFETY.
- Card 7 (top middle):** NEIGHBORHOOD VITALITY, TRANSPARENT DECISION-MAKING, COMMUNITY CONNECT, COMMUNITY ACCESS, COMMUNITY PARTNERSHIPS.
- Card 9 (top right):** CULTURE + IDENTITY, TRANSFORMATIONAL TRANSFORMATION, HEALTH CULTURAL WELLBEING, INCLUSION, HEALTH + INSPIRATION, HISTORICAL CONTEXT OF PLACE, INDIVIDUAL VS. COLLECTIVE PLACE-MAKING.
- Card 9 (middle right):** BUILDING SYSTEMS SELECTION, ENERGY NEED REDUCTION, ENERGY COST REDUCTION, DECARBONIZATION ENERGY, ENERGY NEED REDUCTION.
- Card 12 (middle left):** SOCIAL JUSTICE, CLIMATE JUSTICE, ECONOMIC DEVELOPMENT, ECONOMIC PROGRAMMING, ECONOMIC DEVELOPMENT STRATEGIES, EQUITY.
- Card 10 (middle):** ENVIRONMENT, PLAY, AIR QUALITY, COMMUNITY ENGAGEMENT, AIR QUALITY, COMMUNITY ENGAGEMENT.
- Card 10 (middle right):** ENERGY NEED REDUCTION, ENERGY COST REDUCTION, DECARBONIZATION ENERGY, ENERGY NEED REDUCTION.
- Card 12 (bottom right):** ENERGY NEED REDUCTION, ENERGY COST REDUCTION, DECARBONIZATION ENERGY, ENERGY NEED REDUCTION.
- Card 9 (bottom left):** Site Ecology and Building Energy, EQUIPMENT SERVICES, PUBLIC SPACE, PUBLIC ECOLOGY, BUILDING ECOLOGY, DECARBONIZATION SEQUESTERATION, ECOSYSTEM SERVICES.
- Card 17 (bottom middle):** ASSESSMENT PERFORMANCE, GOODS & SUPPLIES, SAFETY + SECURITY, OPERATIONAL OPTIMIZATION, CONSTRUCTION CLEANING, WASTE, TRANSPORTATION BUILDING PERFORMANCE.
- Card 11 (bottom middle):** ECONOMIC RESILIENCE, COMMUNITY ENGAGEMENT, ECONOMIC RESILIENCE, COMMUNITY ENGAGEMENT, ECONOMIC RESILIENCE, COMMUNITY ENGAGEMENT.
- Card 9 (bottom right):** ECONOMIC RESILIENCE, COMMUNITY ENGAGEMENT, ECONOMIC RESILIENCE, COMMUNITY ENGAGEMENT.

The 'TOP 6 CARDS' section includes:

- Holistic Procurement - vendor transparency as it relates to boarder goals (health, economy, decarbonization)**
- Outdoor Environment - Land Use connected to Historical Context of Place and how to make outdoor environments more comfortable.**
- ENERGY NEED REDUCTION**
- DECARBONIZATION ENERGY**
- sustainable and renewable energy and decarbonization**
- ECONOMIC RESILIENCE**
- COMMUNITY ENGAGEMENT**
- resilience and emergency planning**
- EQUITY**
- INCLUSION**
- equity and inclusion**

- STEP 2: Group 1 discussed the cards that resonated the most with the group.
- Group 1 spent time connecting many of the cards into boarder themes including Holistic Procurement, Outdoor Environment, Renewable Energy and Decarbonization, Resiliency and Emergency Planning, and Equity and Inclusion.

CLOSING
15 MINS

TOP 6 CARDS

Holistic Procurement - vendor transparency as it relates to boarder goals (health, economy, decarbonization)

This block contains a collage of six cards. The top card is titled 'Holistic Procurement - vendor transparency as it relates to boarder goals (health, economy, decarbonization)'. Below it are smaller cards for 'SUPPLY', 'ENVIRONMENTAL MATERIAL SOURCING', 'NOURISHMENT', and 'ASPE'. Each card includes icons and brief text related to its theme.

Outdoor Environment - Land Use connected to Historical Context of Place and how to make outdoor environments more comfortable.

This block contains a collage of six cards. The top card is titled 'Outdoor Environment - Land Use connected to Historical Context of Place and how to make outdoor environments more comfortable.'. Below it are smaller cards for 'AIR QUALITY', 'OUTDOOR ENVIRONMENTAL QUALITY', 'HISTORICAL CONTEXT OF PLACE', 'LAND USE', and 'CLIMATE JUSTICE'. Each card includes icons and brief text related to its theme.

sustainable and renewable energy and decarbonization

This block contains a collage of three cards. The top card is titled 'ENERGY NEED REDUCTION' and features a green pyramid diagram. Below it are cards for 'NET ZERO' and 'DECARBONIZATION: ENERGY'. A large blue box at the bottom contains the text 'sustainable and renewable energy and decarbonization'.

resilience and emergency planning

This block contains a collage of three cards. The top card is titled 'RESILIENCE'. Below it are cards for 'ECONOMIC RESILIENCE' and 'EMERGENCY PLANNING'. A large blue box at the bottom contains the text 'resilience and emergency planning'.

equity and inclusion

This block contains two cards. The left card is titled 'EQUITY' and features an illustration of three people of different heights reaching for fruit on a tree. The right card is titled 'INCLUSION' and features an illustration of a diverse group of people walking together. A large blue box at the bottom contains the text 'equity and inclusion'.

- **Group 2**

- STEP 1: Group 2 reviewed all 12 VALUES topics and stamped a heart of a card resonated with them and a question mark if they wanted more information. Please review the mural link for a clearer view of this group's initial reactions. They spent time drawing connections between the cards as part of their discussion.

STEP TWO: DISCUSS Using the cards that resonated with the group in this step we will spend time prioritizing. Now imagine you were investing a budget in 6 goals that would connect Sustainability to User Experience. **Which VALUE would have the most impact for your investment?**

The image displays a comprehensive grid of sustainability value cards, organized into several clusters. Each card features a title, a brief description, and illustrative graphics. Handwritten annotations in various colors (green, yellow, purple) highlight specific cards and groups of cards, often accompanied by numbered circles (1-10) and explanatory text.

Annotations and Notes:

- Top Left (Green circles 7, 6):** "charging stations", "relationship with city of Norco - a way to rebuild relationship?", "they don't know we are here".
- Top Middle (Green circle 5):** "partnerships = transparency, vitality".
- Top Right (Green circle 7):** "representing the different cultures of the college, but is not necessarily reflected in the exterior and built architecture", "Welcoming environment for the colleges".
- Middle Left (Green circle 10):** "Preparation of outdoor or indoor spaces", "Defining of outdoor or indoor spaces", "How will we bring energy-efficient others", "Taking responsibility - power from a wind farm NIMBYs".
- Middle Right (Green circle 6):** "visual and acoustic is important in the classroom", "add vir part of".
- Bottom Left (Green circle 5):** "Material Facts".
- Bottom Middle (Green circle 7):** "Outdoor Environmental Quality".
- Bottom Right (Green circle 8):** "Procurement + Operations", "Goods + Supplies", "Operational Optimization", "Regulatory Partnerships", "Waste".
- Bottom Far Left (Green circle 10):** "Resiliency", "Risk Adaption + Mitigation", "Emotional Resiliency", "Building Resiliency", "Community Resiliency", "Economic Resiliency", "Emergency Planning".
- Bottom Far Right (Green circle 6):** "Water", "Water Self-Sufficiency", "Water Context of Place", "Storm Water Management", "Hydrological Balance", "Potable Water Quality".

Card Categories and Titles:

- Top Row:** ACCESS + MOBILITY, DECARBONIZATION, TRANSPORTATION, COMMUNITY CONNECTOR, NEIGHBORHOOD VITALITY, TRANSPARENCY: DECISION-MAKING, ORGANIZATIONAL TRANSFORMATION, MULTI-CULTURAL RELEVANCE, INCLUSION.
- Second Row:** MULTI-MODAL TRANSPORTATION, WALKABILITY & SAFETY, COMMUNITY ACCESS, COMMUNITY PARTNERSHIPS, BEAUTY + INSPIRATION, HISTORICAL CONTEXT OF PLACE, INDIVIDUAL VS. COLLECTIVE PLACEMAKING.
- Middle Row (Left):** EQUITABLE DEVELOPMENT, SOCIAL JUSTICE, LAND USE, CLIMATE JUSTICE, ECONOMIC DEVELOPMENT PROGRAMMING, EQUITABLE DEVELOPMENT SITING, EQUITY.
- Middle Row (Right):** HEALTH + WELL-BEING, EVIDENCE-BASED DECISIONS, NOURISHMENT, PLAY, BIOPHILIA, ACTIVE SPACES, INDIVIDUAL FULFILLMENT.
- Bottom Row (Left):** MATERIALS IMPACT, DESIGN FOR DISABILITY, HANDPRINTING, PURPOSE OVER SURPLUS, TRANSPARENCY: MATERIAL INCIDENTS, DECARBONIZATION: MATERIALS, CONSCIOUS MATERIAL SOURCING.
- Bottom Row (Middle):** OUTDOOR ENVIRONMENTAL QUALITY, PUBLIC SPACE, SITE ECOLOGY, BUILDING ECOLOGY, DECARBONIZATION: DESEQUESTERATION, ECOSYSTEM SERVICES.
- Bottom Row (Right):** PROCUREMENT + OPERATIONS, GOODS + SUPPLIES, OPERATIONAL OPTIMIZATION, SAFETY + SECURITY, CONSCIOUS CLEANING + UPKEEP, TRANSPARENCY: BUILDING PERFORMANCE.
- Bottom Far Right:** WASTE, REGULATORY PARTNERSHIPS.

- STEP 2: Group 2 discussed their top VALUES: Group 2 has a robust conversation on many of the card topics, creating their own themes like Group 1. Welcoming Campus Experience, Carbon Reduction, Community Relationship Replenishment, Classroom Comfort and Safety, Biological Sustainability



CLOSING 15 MINS

TOP 6 CARDS

PROPORTIONATE
Proportionate usage of space to maximize its effectiveness for everyone else

DEDICATION OF
Dedication of outdoor vs indoor spaces

WELCOMING
Welcoming environment for the changes

INCLUSION
How can you support inclusion and ensure that everyone is included in the changes and decisions?

RENEWAL
How can you support renewal and ensure that everyone is included in the changes and decisions?

EQUITY
How can you support equity and ensure that everyone is included in the changes and decisions?

WELCOMING CAMPUS EXPERIENCE

ECONOMIC DEVELOPMENT PROGRAMMING
How can you support economic development programming and ensure that everyone is included in the changes and decisions?

How will the service, renewable energy affect

Taking responsibility - power from a wind farm NIMBY's

DECARBONIZATION TRANSPORTATION
How can you support decarbonization transportation and ensure that everyone is included in the changes and decisions?

charging stations

students arent from the community

Charging for students

Reduce Heat Island Effect on campus

DECARBONIZATION ENERGY
How can you support decarbonization energy and ensure that everyone is included in the changes and decisions?

CARBON REDUCTION

COMMUNITY PARTNERSHIPS
How can you support community partnerships and ensure that everyone is included in the changes and decisions?

they don't know we are here

relationship with city of Norco - a way to rebuild relationship?

partnerships = transparency, vitality

TRANSFORMING
Transforming relationships by improving community partnerships

UNITY
Unity in the community

Food and computer investments in the community

COMMUNITY RELATIONSHIP REPLENISHMENT

Unable to support the city of NorCo

Pandemic and the college did not act as a resilient place agent

VALUE card

THERMAL COMFORT
How can you support thermal comfort and ensure that everyone is included in the changes and decisions?

visual and acoustic is important in the classroom

Virus issues and air systems

CLASSROOM COMFORT & SAFETY

VISUAL COMFORT
How can you support visual comfort and ensure that everyone is included in the changes and decisions?

BIOPHILIA
How can you support biophilia and ensure that everyone is included in the changes and decisions?

Irregular rainfall issues and flood mitigation

BIOLOGICAL SUSTAINABILITY

ECOSYSTEM SERVICES
How can you support ecosystem services and ensure that everyone is included in the changes and decisions?

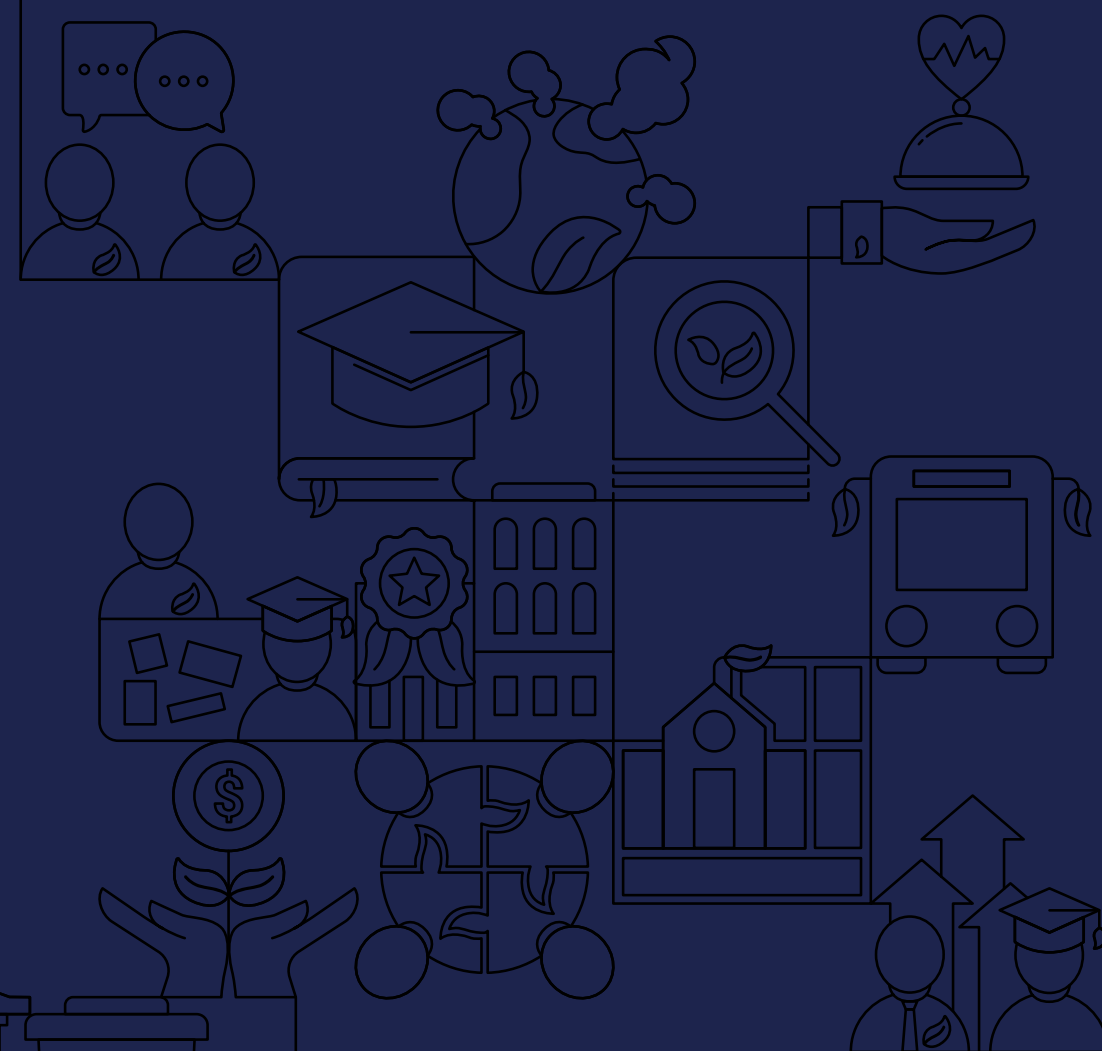
STORM WATER MANAGEMENT

This section contains a grid of 48 small cards, each representing a different sustainability or community topic. The cards are arranged in a grid and include various icons, text, and diagrams. Some cards are highlighted with larger text boxes, such as 'visual and acoustic is important in the classroom', 'charging stations', 'they don't know we are here', and 'visual and acoustic is important in the classroom'. The cards cover a wide range of topics, including energy, transportation, community, and environmental sustainability.

Session Conclusion:

- DLR Group will share out more about all the other VALUES sessions the next time we meet. We will uncover what is rising to the time so we can start to discuss goal setting around your VALUES.

2021 SUSTAINABILITY AND CLIMATE ACTION PLAN



Your Team



Leigh Anne Jones
Principal in Charge



Lindsey Perez
Sustainability and Climate
Action Plan Leader



Prem Sundharam
Total Cost of Ownership
Leader



Chris Lawrence
Project Manager



Linsey Graff
Engagement/STARS
Leader

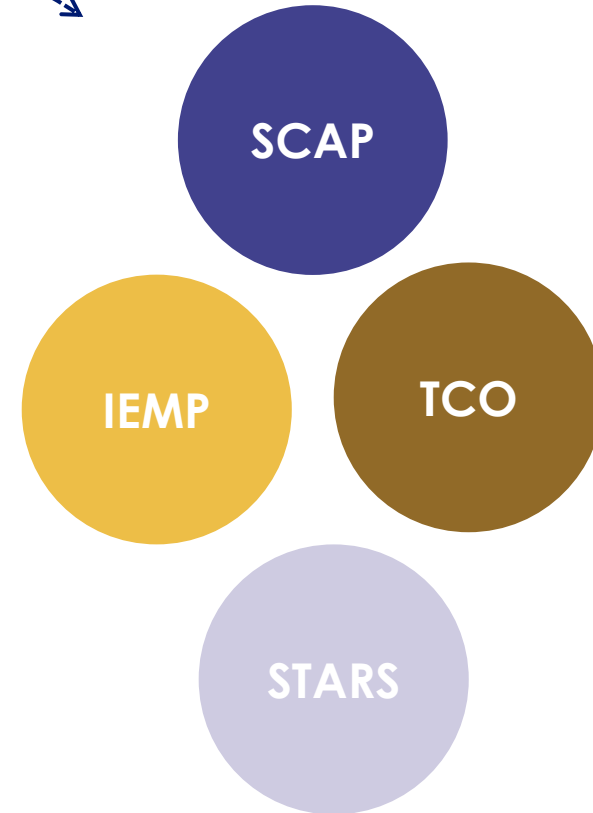


Shona O'Dea
Integrated Energy
Master Plan Leader

Integrated Planning Approach

CONNECTING TO OTHER PLANS:

- District Strategic Plan
- College's Strategic Plan
- College's Educational Master Plan
- College's Facilities Master Plan
- District Five-year Capital Construction Plan
- College's Operational and Maintenance Plan
- Fiscal Plan
- Solar Planning Initiative



Project Schedule

	2021							2022						Project Complete May 31, 2023
	Jun.	Jul.	Aug.	Sep.	Oct.	Nov.	Dec.	Jan.	Feb.	Mar.	Apr.	May	Jun.	
TASKS	TASK 1: Project Initiation			TASK 2: Research and Analysis				TASK 3: Implementation Phase						TASK 4: Verification and Monitoring
SCAP	Project Initiation			VALUES and Vision		Prioritization and Goals			Action Plan and Implementation			Final Plan		
IEMP				Campus Building Profiles	Energy Audits	Recommend ECMs			ECMs Finalized	Dashboard	Draft Plan	Final Plan	Final Approvals	
TCO				Identify Assets	Classify Assets	Decision Criteria	Funding Analysis		Costing Assets	Asset Decisions		Comprehensive Asset Plan	Final Approvals	
STARS														
Committee Workshop			Kick-Off Meeting	VALUES	Listening / Deep-Dives	Prioritization		Goal Setting		Action Plan	Draft Plan	Final Plan	Final Approvals	
Campus Work			President's Kick-off	VALUES	Open Houses	Campus Priorities	-	-	College Action Plan		Draft Plan		Final Approvals	
Deliverable Due														

We are here.

Sustainability Committee Members

District Office

- **Hussain Agah** - Associate Vice Chancellor
- **Mehran Mohtasham** - Director of Capital Planning
- **Bart Doering** - Facilities Development Director
- **Marisa Yeager** - Director, Government Relations
- **Myra Nava** - Classified Representative

Moreno Valley College

- **Fabian Biancardi** – Professor, Academic Senate
- **Kemari Wofford** – Student Representative, College Students Association
- **Majd Askar** - Interim Vice President, Business Services
- **Ron Kirkpatrick** - Director, Facilities M&O
- **Pending** – Classified Representatives

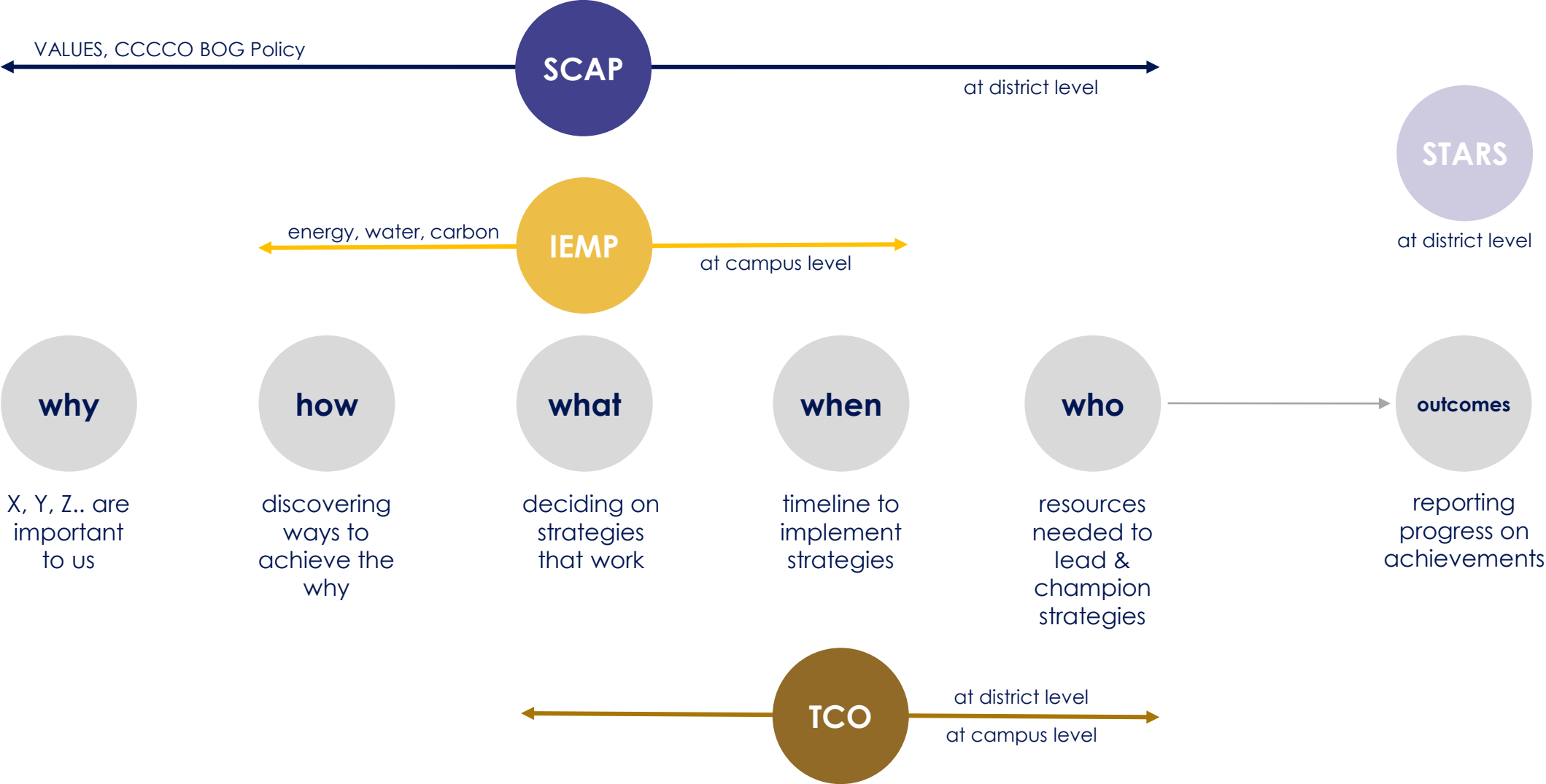
Norco College

- **Maxwell Murphey** - Associate Faculty, Academic Senate
- **Isaac Nunez** - Student Representative, College Students Association
- **Michael Collins** - Vice President, Business Services, Business Services Office
- **Steven Marshall** - Director, Facilities M&O
- **Andy Aldasoro** - Classified Representative

Riverside City College

- **Garth Schultz** – Associate Professor, Faculty Association
- **Tonya Huff** – Assistant Professor, Academic Senate
- **Jordyn Villanueva** - Student Representative, College Students Association
- **Albert Jaramillo** – Student Representative, College Students Association (Alternate)
- **Chip West** - Vice President, Business Services, Business Services Office
- **Robert Beebe** - Interim Director, Facilities M&O
- **Peter Lomas** - Classified Representative

Connections



One goal of the Sustainability and Climate Action Plan is to identify ways for **environmental, social and financial sustainability** to be fostered at each campus in the district.



Defining Sustainability

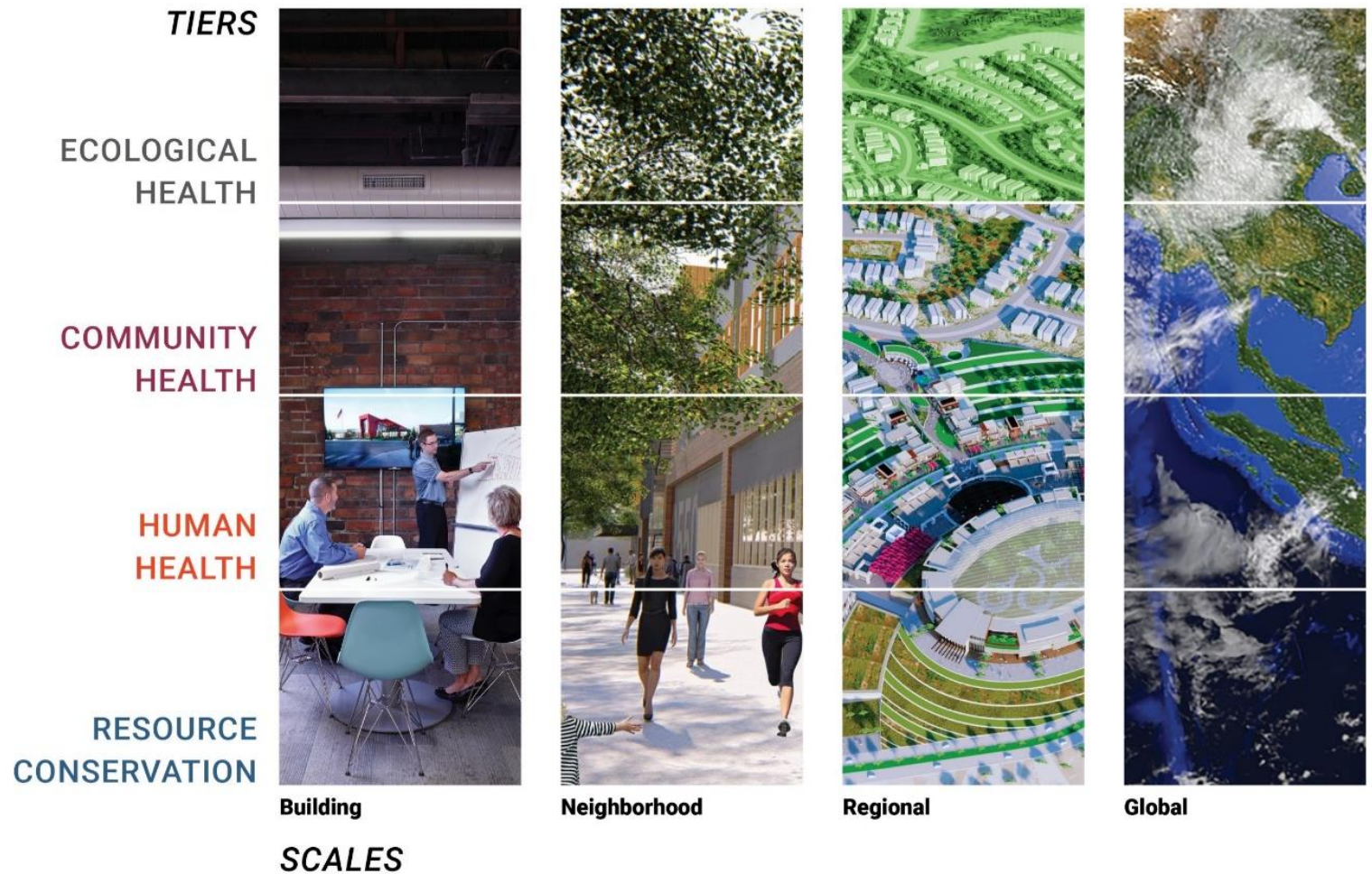
Planning & Sustainability

Our choices have an impact at all scales.

Our choices impact all categories

Environment is everything around us including us while the ecology describes how all those work.

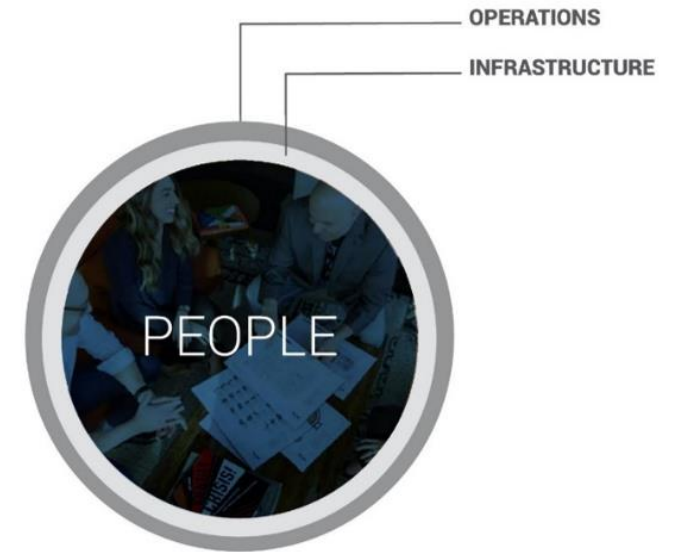
Ecology looks at the interaction between everything.



User Experience + Performance



Design Solution



Holistic design thinking maximizes opportunities for optimal design impact on people, operations, and infrastructure.

Comprehensive Sustainability Language



ACCESS + MOBILITY

How can your project advocate and celebrate transit-oriented design, connections between transit hubs, and walkable communities?

- Decarbonization: Transportation
- Multi-Modal Transportation
- Walkability and Safety



COMMUNITY CONNECTOR

How can your project support its surrounding community, build community partnerships, and connect residents to shared resources?

- Community Access
- Community Partnerships
- Neighborhood Vitality
- Transparency: Decision-Making



CULTURE + IDENTITY

How can your project celebrate its history and cultural context to develop a strong sense of place that speaks to the identities of occupants and surrounding communities?

- Beauty & Inspiration
- Historical Context of Place
- Inclusion
- Individual vs. Collective Placemaking
- Multi-Cultural Relevance
- Organizational Transformation



OUTDOOR ENVIRONMENTAL QUALITY

How can your project's outdoor spaces restore ecology, build community, and create a strong sense of place?

- Building Ecology
- Decarbonization: Sequestration
- Ecosystem Services
- Public Space
- Site Ecology



EQUITABLE DEVELOPMENT

How can your project promote affordability, provide access to opportunity, and advocate for those in need?

- Climate Justice
- Economic Development Programming
- Equitable Development
- Siting
- Equity
- Land Use
- Social Justice



HEALTH + WELL-BEING

How can intentional design features actively promote users' emotional and physical well-being and encourage them to make healthier choices?

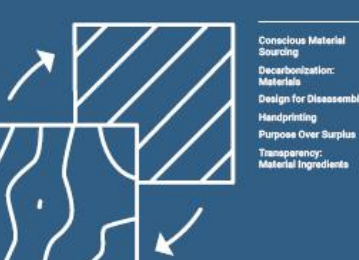
- Active Spaces
- Biophilia
- Evidence-Based Modalities
- Nourishment
- Play



INDOOR ENVIRONMENTAL QUALITY

How can your project support user comfort and productivity?

- Acoustic Comfort
- Air Quality
- Thermal Comfort
- Visual Comfort



MATERIALS IMPACT

How do your materials choices support healthy ecology, communities, and economies?

- Conscious Material Sourcing
- Decarbonization: Materials
- Design for Disassembly
- Handprinting
- Purpose Over Surplus
- Transparency: Material Ingredients



ENERGY

How can changes in energy infrastructure support your broader mission, reduce costs, and build a healthier planet?

- Building Systems Selection
- Decarbonization: Energy Generation
- Distributed Energy Generation
- Energy Cost Reduction
- Energy Need Reduction



RESILIENCY

How can your project help its users and community adapt to and recover from unexpected situations?


- Building Resiliency
- Community Resiliency
- Economic Resiliency
- Emergency Planning
- Emotional Resiliency
- Risk Adaptation & Mitigation



PROCUREMENT + OPERATIONS

How can procurement, building operations, and management practices support your broader project goals?

- Conscious Cleaning & Upkeep Goods & Supplies
- Operational Optimization
- Regulatory Partnerships
- Safety & Security
- Transparency: Building Performance
- Waste



WATER

What connections to water are important to your users and neighboring communities?

- (Storm) Water Management
- Hydrological Balance
- Potable Water Quality
- Water Context of Place
- Water Self-Sufficiency