
Meeting Minutes



Architecture Engineering Planning Interiors

1650 Spruce Street, Suite 300
Riverside, CA 92507

Meeting Date	11.30.2021
To	Hussain Agah, Mehran Mohtasham, Myra Nava
From	DLR Group
Location	via ZOOM
Project	RCCD: Sustainability and Climate Action Plan
Project No.	N/A
Attendees	Linsey Graft, Lindsey Perez, Michael Collins, Esmeralda Abejar, Steve Marshall, Courtney Buchanan, Mehran Mohtasham, Mike Angeles, Teresa Friedrich Finneran
Purpose	Norco College – Resource Council / Future Sustainability Task Force Kickoff

Agenda:

Project Introduction (5 mins)

Discussion – mission and purpose of the Norco College Sustainability Task Force (15 mins)

Introduction of Planning Framework (10 mins)

Discussion – opportunities and challenges (15 mins)

Taking a peek ahead - Examples of TOP Values (10 mins)

Next Steps (5 mins)

Minutes: See slides attached.

Discussion #1:

Given where the college is today meeting its sustainability goals, what do you feel the mission of the future taskforce should be now, and into the future?

- Trouble recruiting for this taskforce to be frank. There are faculty interested and so are students, but commitment definition is really needed to be defined.
 - This taskforce could help us understand what fits Norco vs. the district and what is realistic for Norco.
 - Facilities
 - Students
 - Procurement
 - In a Norco specific way...
- Take ownership of this plan that we believe in – we took the time to build it and will live it.
- What are the consequences or unintended consequences of implementing or not implementing the goals.

- Cost of Action and Cost of Inaction – some help save resources vs. some take money to implement.
 - Whatever we plan to do that we can afford to pay for it and that it has positive impact.
 - What can we do with the resources we have since the state isn't providing aspects?
- Environmental Science students might be a good place to recruit students.
- Faculty lens – how can some of the energy efficiency measures or other goals help connect dots between ideas.
 - 3 bin system by the state - non-compliance disposal
 - Trash, Recycle and Compositable.
 - Visible components are easier to connect to teaching
 - Without being on a task force less visible aspects to instruction.
- Online nature Norco is in now – engagement is extra tough with students.

Discussion #2:

Now that you've seen how the framework is planned, what opportunities (+) or challenges (-) do you think we will run into with the planning and implementation of the S-CAP at Norco College?

- Structure looks good – we need to be very realistic in strategies and actions.
 - Identify low-hanging fruit and build success around that first.
 - Only as good at measuring success as your waste hauler can provide to our reporting on the metrics.
 - Data needed to prove the success metrics.
- Capture the good things we are doing sustainable – we are already doing this or that when DLR Group comes back with ideas. An inventory of what we are doing – benchmarking would be a great place to start.
- Not starting from zero on goals – based on the benchmark of what they are doing.
- Allocating resources will always be a challenge – we don't get a budget augmentation for more recycling bins or bike racks – what is the low hanging fruit.
- Purchasing practices could be reviewed and help open discussions for a different way of doing things.

Discussion #3:

From what you've seen so far, what goals or actions are you most passionate about incorporating into the S-CAP?

- Not discussed.

2021 SUSTAINABILITY AND CLIMATE ACTION PLAN





Agenda

Project Introduction (5 mins)

Discussion – mission and purpose of the Norco College Sustainability Task Force (15 mins)

Introduction of Planning Framework (10 mins)

Discussion – opportunities and challenges (15 mins)

Taking a peek ahead - Examples of TOP Values (10 mins)

Next Steps (5 mins)

Your Team



Leigh Anne Jones
Principal in Charge



Chris Lawrence
Project Manager



Prem Sundharam
Total Cost of Ownership
Leader



Lindsey Perez
Sustainability and Climate
Action Plan Leader



Linsey Graff
Engagement/STARS
Leader



Shona O'Dea
Integrated Energy
Master Plan Leader

Our Project Schedule



We are here.

Scope and Deliverables



SCAP

Sustainability and Climate Action Plan

Establish an implementable roadmap towards holistic sustainability goals which sets RCCD up as a leader in addressing Environmental Stewardship and Climate Change.



IEMP

Integrated Energy Master Plan

Establish an implementable roadmap towards Carbon Neutrality at each campus.



TCO

Total Cost of Ownership Model

Develop a framework for cost-effective decision-making that identifies human and capital resources needed to address goals of the SCAP and IEMP.

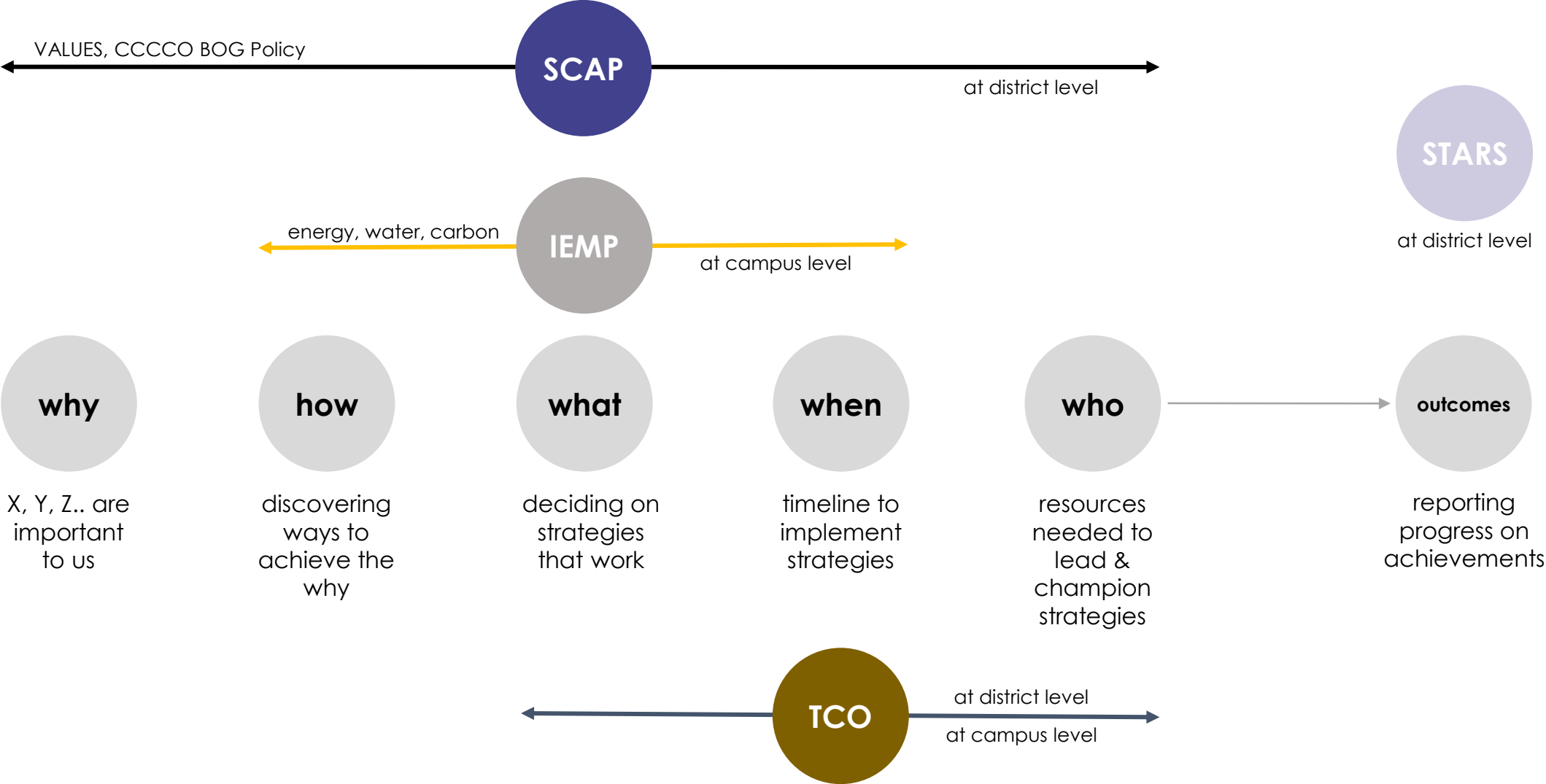


STARS

AASHE Stars Report

Establish a roadmap toward peer group recognition of your sustainability efforts. AASHE Stars is a third-party reporting framework connecting sustainability in the built environment and academics.

Deliverables



RCCD Board Policy

“RCCD district recognizes its responsibility to exercise environmental stewardship and to economically manage the use of buildings, land and natural resources”.

BP 5775 SUSTAINABILITY/ENVIRONMENTAL RESPONSIBILITY

References:

California Code of Regulations, Title 5, Sections 57050-57055

The Riverside Community College District recognizes its responsibility to exercise environmental stewardship and to economically manage the use of buildings, land and natural resources. It is the intent of the district to create a set of operating principles and guidelines in the execution of its responsibilities to facilities' design and operation; campus management and teaching and learning, thereby minimizing negative environmental impacts of activities under its control and oversight.

Principles and Guidelines of Sustainable Stewardship

1. Responsible and thoughtful utilization of land under its control;
2. Strive to make as energy efficient as economically practical, heating, ventilation, air conditioning, lighting systems, and all other mechanical (pumps, etc.) and building systems within the District;
3. Pursuant to Board Resolution 13-09/10, all new facilities of the District will be planned, designed and constructed to meet LEED (Leadership in Energy and Environmental Design) certification standards and, to the greatest extent practical, major renovations are to be designed to also meet LEED standards.
4. Promote initiatives that advance a sustainable environment by partnerships with energy production and other agencies, public and private.
5. Operating practices District-wide that demonstrate the commitment to sustainable management, such as, but not limited to, recycling programs, waste reduction, modified irrigation systems to minimize water usage and/or the use of reclaimed water, xeriscape and the use of native and drought resistant plants in landscaping projects.
6. Encouragement of curriculum in environmental sustainability.

Date Adopted: January 25, 2011

Formerly: 6870

Roles and Responsibilities

District Sustainability Committee

This Districtwide committee is tasked with:

- Establishing sustainability & environmental responsibility
- Defining charge, goals, objectives, criteria, and timeline
- Developing sustainability & environmental responsibility plan
- Implementing sustainability & environmental responsibility plan
- Regularly monitoring and reporting progress

To define principles and guidelines, a

districtwide sustainability committee

(Subgroup of Facilities Planning

Development Council) was formed , in

which **Norco College representatives**

include:

- **Dr. Michael Collins**
- **Steven Marshall**
- **Maxwell Murphey**
- **Jeff Buch**

Norco College Future Sustainability Task Force

To assist in further defining NC's priorities and goals, a task force is being formed.

For the S-CAP, we will need the Sustainability Committee to attend:

- Kick-off Workshop - November
- Action and Implementation Workshops – February and March
- Draft Plan Review - first and second reads – April, May, and June

Once the plan is approved, that task force plan the implementation of the strategies on campus. This implementation will likely be ongoing for many years, as the S-CAP will identify short-mid-and long-term goals.

Discussion Question:

Given where the college is today meeting its sustainability goals, **what do you feel the mission of the future taskforce should be now, and into the future?**

WORKSHOP 01: NC Top VALUES

Norco College

DECARBONIZATION (LEADS TO CLIMATE JUSTICE)

CLIMATE JUSTICE
How can your project mitigate the effects of climate change to ensure that no single community or group of people is unfairly affected by the project's environmental burdens or benefits?

DECARBONIZATION: ENERGY
How can your project reduce its energy consumption and use renewable energy sources?

DECARBONIZATION: MATERIALS
How can your project reduce its embodied carbon footprint by using low-carbon materials and construction methods?

DECARBONIZATION: TRANSPORTATION
How can your project reduce its transportation-related carbon footprint by promoting walking, biking, and public transit?

DECARBONIZATION: SEQUESTERATION
How can your project capture and store carbon dioxide from the atmosphere?

HEALTH AND WELLBEING

AIR QUALITY
What pollutes the indoor air that occupants breathe? How can pollution be avoided or treated?

THERMAL COMFORT
What environmental factors impact thermal comfort? How can your project ensure that all occupants have access to thermal comfort?

WELLNESS
How can your project support the physical, mental, and emotional well-being of its occupants?

BOLSTER COMMUNITY PARTNERSHIPS

COMMUNITY PARTNERSHIPS
How can your project connect with local organizations, governments, businesses, and thought leaders to exchange ideas and services for mutual benefit?

TRANSPARENCY: BUILDING PERFORMANCE
What aspects of building performance can be transparent and communicated to users?

ECOSYSTEM SERVICES

ECOSYSTEM SERVICES
How can natural infrastructure become a resource to mitigate flooding, filter pollutants, mitigate the heat island effect, and improve mental and physical well-being?

RESILIENCY

ECONOMIC RESILIENCY
How can your project create a sustainable balance of uses and revenue sources to ensure continued economic vitality in the face of unexpected events?

EQUITABLE & INCLUSIVE EXPERIENCE FOR ALL

EQUITY
How can your project allocate services, resources, and opportunities in a just and equitable manner, and protect marginalized groups?

INDIVIDUAL FULFILLMENT
How can your project support the ability of individuals to grow and achieve social, emotional, and mental well-being? How can your project help to create meaningful, rewarding experiences?

MULTI-CULTURAL RELEVANCE
How can your project reflect the values, beliefs, needs, and cultures of its immediate and surrounding communities? How can your project ensure the cultures of its users are well-served in new perspectives?

INCLUSION
How does your project look beyond its base program to provide opportunities for groups that may be marginalized? How can it create a sense of belonging for individuals of all backgrounds and abilities?

OUR PLANNING FRAMEWORK: Organizing the VALUES (Our Why)

Included

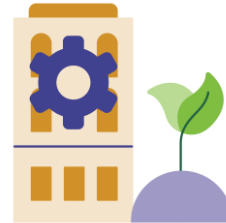
Includes the creation of goals and metrics within the S-CAP



Decarbonization and Climate Justice



Waste / Procurement



Eco-systems / Water



Health and Well-being



Resiliency

Influenced

Would be included in an update with a sustainability lens / new plan



Academics



Engagement



Trust and Transparency

Reinforced

Planning and metrics already exist in other plans



Community Partnerships



Equity and Social Justice











VALUES AND OTHER FRAMEWORKS

Innovation and Leadership (ALL)

Your Top VALUES

CCCCO

AASHE Stars

 Decarbonization, Energy Use, and Climate Justice	Operations	Operations
 Waste / Procurement		
 Water Eco-systems		
 Health and Well-being	Gap	Gap
 Resiliency		
 Academics	Academics	Academic and Curriculum
 Engagement	Engagement	Engagement
 Community Partnerships		
 Trust and Transparency	Planning and Administration	Planning and Administration
 Equity and Social Justice		

Impact Area

IMPACT AREAS are the top **VALUES** as created collectively by the District and Colleges.



Decarbonization and Climate Justice



Waste / Procurement



Eco-systems / Water



Health and Well-being



Resiliency



Academics



Engagement



Trust and Transparency



Community Partnerships



Equity and Social Justice



IMPACT AREAS are the top VALUES as created collectively by the District and Colleges.

GOALS AND OUTCOMES establish long-term milestones that the **District and Colleges will work toward**. These were established by cross-referencing System and Stars frameworks with Impact Areas.

Impact Area

Goal or Desired Outcome

Objectives

***IMPACT AREAS** are the top VALUES as created collectively by the District and Colleges.*

***GOALS AND OUTCOMES** establish long-term milestones that the District and Colleges will work toward. These were established by cross-referencing System and Stars frameworks with Impact Areas.*

***OBJECTIVES** outline measurable actions were established by from District and Campus engagement, System mandates, and HiEd best practices.*

***ACTIONS** are the initiatives that it will take to get meet your goal / outcome*

Actions (per objective)

Impact Area

***IMPACT AREAS** are the top VALUES as created collectively by the District and Colleges.*

***ACTIONS** are the initiatives that it will take to get meet your goal / outcome*

Goal or Desired Outcome

***GOALS AND OUTCOMES** establish long-term milestones that the District and Colleges will work toward. These were established by cross-referencing System and Stars frameworks with Impact Areas.*

Actions (per objective)

Objectives

***OBJECTIVES** outline measurable actions were established by from District and Campus engagement, System mandates, and HiEd best practices.*

Measures

***MEASURES** align with the objectives to manage what success will look.*

Metrics

***METRICS** outline how the objective will be measured based on the data available or data required.*

Milestones

***MILESTONES** represent the timeline associated with each objective. These outline short-, mid-, and long-term strategies.*

Impact Area

IMPACT AREAS are the top VALUES as created collectively by the District and Colleges.

Goal or Desired Outcome

GOALS AND OUTCOMES establish long-term milestones that the District and Colleges will work toward. These were established by cross-referencing System and Stars frameworks with Impact Areas.

ACTIONS are the initiatives that it will take to get meet your goal / outcome

Actions (per objective)

Objectives

OBJECTIVES outline measurable actions were established by from District and Campus engagement, System mandates, and HiEd best practices.

Measures

MEASURES align with the objectives to manage what success will look.

Metrics

METRICS outline how the objective will be measured based on the data available or data required.

Milestones

MILESTONES represent the timeline associated with each objective. These outline short-, mid-, and long-term strategies.

Five Dimensions of Resiliency

RESILIENCY overlays risk-management and the five dimensions of resiliency (Ecosystem, Financial, Human Health, Infrastructure, Social) into each Impact Area

Five Dimensions of Resilience – Adding a Lens of Mitigation

During a disruption (climatic, manmade, or public health), these are the lenses in which we can mitigate loss:

Impact Areas = Identified Milestones of Change as planned in the S-CAP



Decarbonization and Climate Justice



Waste / Procurement



Eco-systems / Water



Health and Well-being



Resiliency



Academics



Engagement



Trust and Transparency



Community Partnerships



Equity and Social Justice

Five Dimensions of Resilience – Adding a Lens of Mitigation

During a disruption (climatic, manmade, or public health), these are the lenses in which we can mitigate loss:

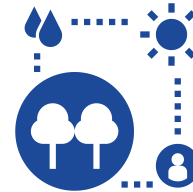
Impact Areas = Identified Milestones of Change as planned in the S-CAP

More Comprehensive – getting back to operations during a disruption



Health & Wellness

Basics – food, clean water, etc.



Ecosystem Services

Hazards – such as air quality, drought, etc.



Social Equity & Governance

How do different groups respond to disruption differently?



Infrastructure

Physical Building and Systems Infrastructure plus Transit, Communications, etc.



Economic

How can the College plan for financial disruptions, and/or plan to connect to a larger response for the region.

Here's an example!



RECYCLING AND WASTE REDUCTION

IMPACT AREAS are the top ***VALUES*** as created collectively by the District and Colleges.



RECYCLING AND WASTE REDUCTION

Achieve zero waste to landfill.

IMPACT AREAS are the top VALUES as created collectively by the District and Colleges.

GOALS AND OUTCOMES establish long-term milestones that the **District and Colleges will work toward**. These were established by cross-referencing System and Stars frameworks with Impact Areas.



RECYCLING AND WASTE REDUCTION

Achieve zero waste to landfill.

Reduce the total weight of non-construction waste.

Tons of non construction waste generated

-20%

By 2025

IMPACT AREAS are the top **VALUES** as created collectively by the District and Colleges.

GOALS AND OUTCOMES establish long-term milestones that the District and Colleges will work toward. These were established by cross-referencing System and Stars frameworks with Impact Areas.

OBJECTIVES outline measurable actions were established by from District and Campus engagement, System mandates, and HiEd best practices.

MEASURES align with the objectives to manage what success will look.

METRICS outline how the objective will be measured based on the data available or data required.

MILESTONES represent the timeline associated with each objective. These outline short-, mid-, and long-term strategies.



RECYCLING AND WASTE REDUCTION

Achieve zero waste to landfill.

Reduce the total weight of non-construction waste.

Tons of non-construction waste generated

-20%

By 2025

Increase diversion rates for non-construction waste.

Tons of non-construction waste diverted

+55%

By 2030

IMPACT AREAS are the top VALUES as created collectively by the District and Colleges.

GOALS AND OUTCOMES establish long-term milestones that the District and Colleges will work toward. These were established by cross-referencing System and Stars frameworks with Impact Areas.

OBJECTIVES outline measurable actions were established by from District and Campus engagement, System mandates, and HiEd best practices.

MEASURES align with the objectives to manage what success will look.

METRICS outline how the objective will be measured based on the data available or data required.

MILESTONES represent the timeline associated with each objective. These outline short-, mid-, and long-term strategies.



RECYCLING AND WASTE REDUCTION

Achieve zero waste to landfill.

Reduce the total weight of non-construction waste.

Tons of non-construction waste generated

-20%

By 2025

Increase diversion rates for non-construction waste.

Tons of non-construction waste diverted

+55%

By 2030

Increase construction waste diversion rate.

tons of construction waste diverted

+80%

By 2040

IMPACT AREAS are the top **VALUES** as created collectively by the District and Colleges.

GOALS AND OUTCOMES establish long-term milestones that the District and Colleges will work toward. These were established by cross-referencing System and Stars frameworks with Impact Areas.

OBJECTIVES outline measurable actions were established by from District and Campus engagement, System mandates, and HiEd best practices.

MEASURES align with the objectives to manage what success will look.

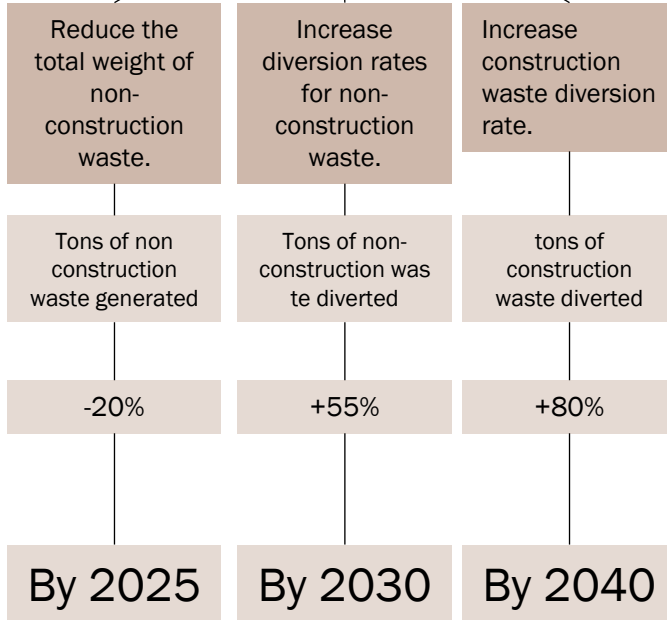
METRICS outline how the objective will be measured based on the data available or data required.

MILESTONES represent the timeline associated with each objective. These outline short-, mid-, and long-term strategies.



RECYCLING AND WASTE REDUCTION

Achieve zero waste to landfill.



ACTIONS are the initiatives that it will take to get meet your goal / outcome

Actions (per objective)

- ✓ **Complete an annual waste audit**
- ✓ **Implement a campus-wide recycling program paired with educational signage**
- ✓ **Continue paperless courses**
- ✓ **Create a district wide supply and furniture swap program**
- ✓ **Etc.**
- ✓ **Etc.**
- ✓ **Etc.**

IMPACT AREAS are the top VALUES as created collectively by the District and Colleges.

GOALS AND OUTCOMES establish long-term milestones that the District and Colleges will work toward. These were established by cross-referencing System and Stars frameworks with Impact Areas.

OBJECTIVES outline measurable actions were established by from District and Campus engagement, System mandates, and HiEd best practices.

MEASURES align with the objectives to manage what success will look.

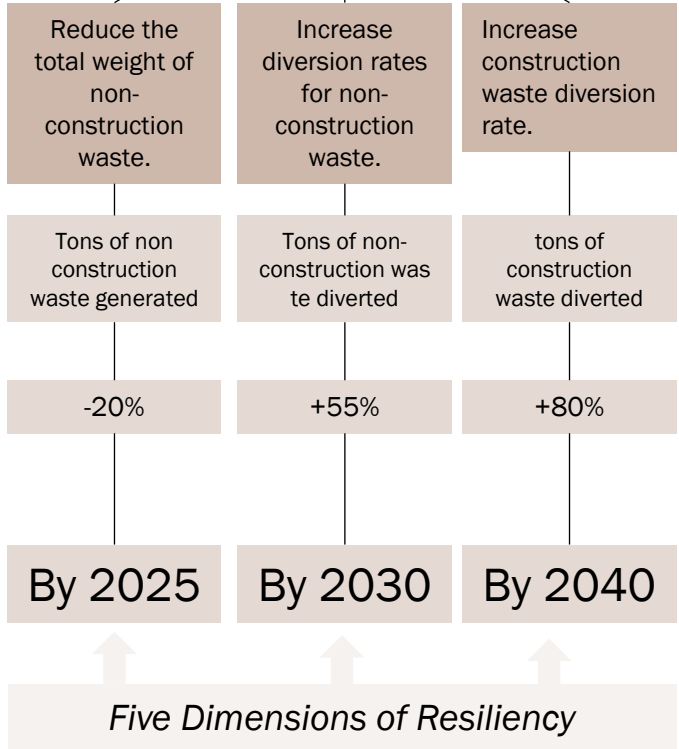
METRICS outline how the objective will be measured based on the data available or data required.

MILESTONES represent the timeline associated with each objective. These outline short-, mid-, and long-term strategies.



RECYCLING AND WASTE REDUCTION

Achieve zero waste to landfill.



ACTIONS are the initiatives that it will take to get meet your goal / outcome

Actions (per objective)

- ✓ **Complete an annual waste audit**
- ✓ **Implement a campus-wide recycling program paired with educational signage**
- ✓ **Continue paperless courses**
- ✓ **Create a district wide supply and furniture swap program**
- ✓ **Etc.**
- ✓ **Etc.**
- ✓ **Etc.**

IMPACT AREAS are the top VALUES as created collectively by the District and Colleges.

GOALS AND OUTCOMES establish long-term milestones that the District and Colleges will work toward. These were established by cross-referencing System and Stars frameworks with Impact Areas.

OBJECTIVES outline measurable actions were established by from District and Campus engagement, System mandates, and HiEd best practices.

MEASURES align with the objectives to manage what success will look.

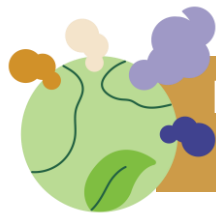
METRICS outline how the objective will be measured based on the data available or data required.

MILESTONES represent the timeline associated with each objective. These outline short-, mid-, and long-term strategies.

RESILIENCY overlays risk-management and the five dimensions of resiliency (Ecosystem, Financial, Human Health, Infrastructure, Social) into each Impact Area

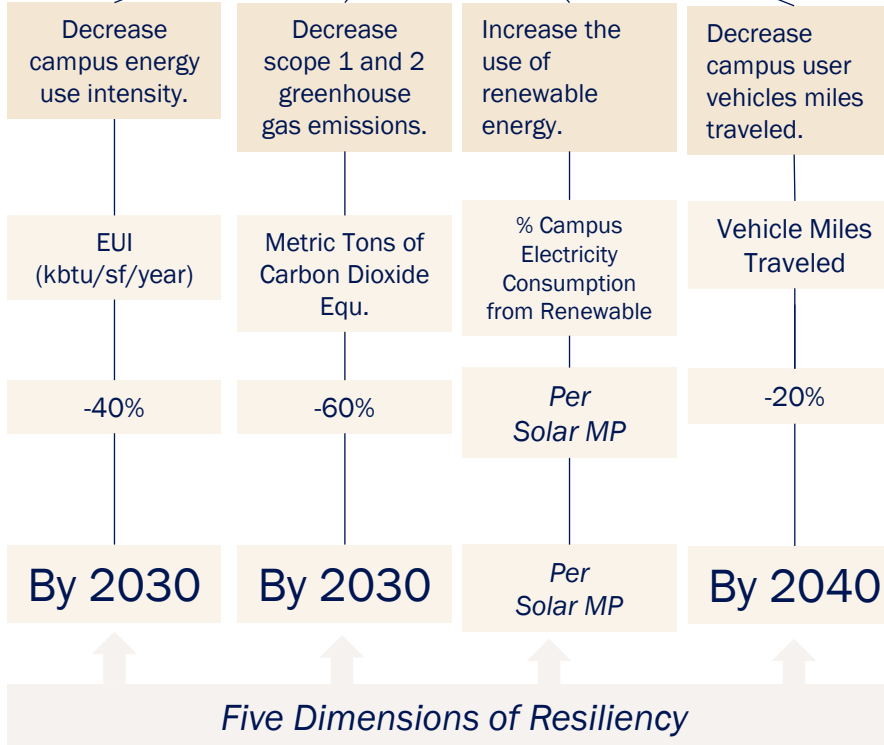
Discussion Question:

Now that you've seen how the framework is planned, **what opportunities (+) or challenges (-) do you think we will run into with the planning and implementation of the S-CAP at Norco College?**



ENERGY USE, DECARBONIZATION, AND CLIMATE JUSTICE

Achieve net-zero emissions.



Actions (per objective)

- ✓ **Partner with local and regional transit to ensure routes are convenient / timely**
- ✓ **Align course schedules with transit schedules**

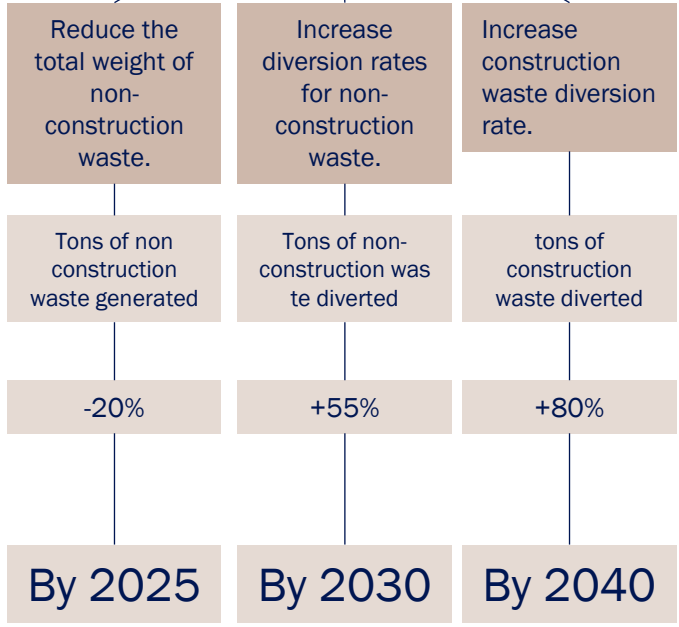
Other ideas from Open House:

- *Electric Charging Stations*
- *Energy Efficient Capital Improvement*
- *Promote alternatives to single occupant vehicles*



RECYCLING AND WASTE REDUCTION

Achieve zero waste to landfill.



Five Dimensions of Resiliency

Actions (per objective)

- ✓ **Complete an annual waste audit**
- ✓ **Implement a campus-wide recycling program paired with educational signage**
- ✓ **Continue paperless courses**
- ✓ **Create a district wide supply and furniture swap program**

Other ideas from Open House:

- **Add Food Waste**

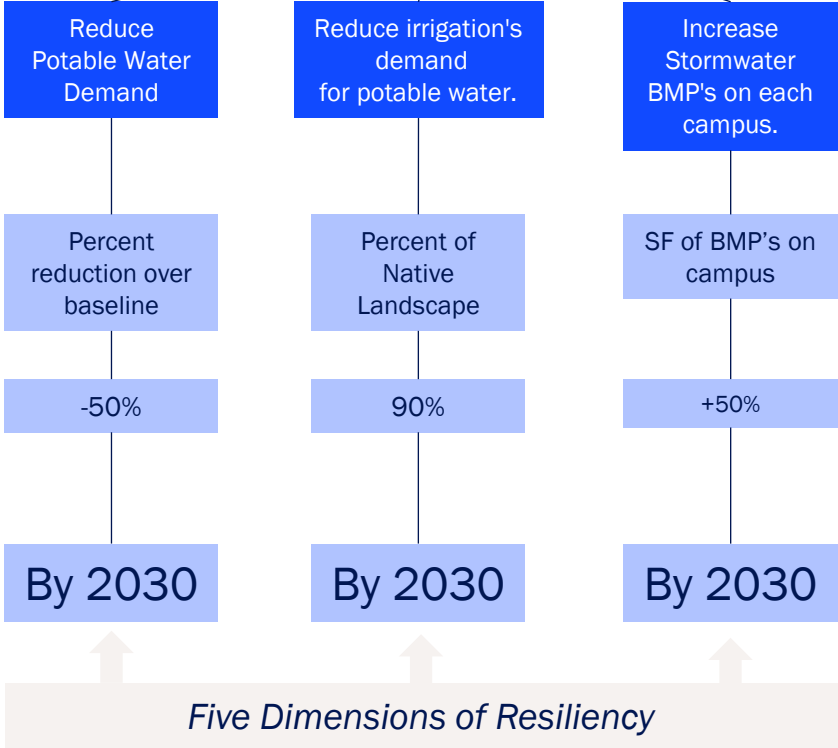


WATER AND ECO-SYSTEMS

Create and implement a holistic approach to water services on campus to achieve water balance across the district.

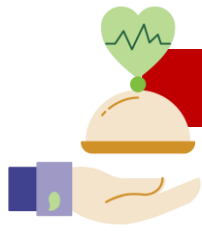
Actions (per objective)

- ✓ **Benchmark potable water usage and create a water plan.**
- ✓ **Utilize water efficient fixtures in all new buildings and major renovations**



Other ideas from Open House:

- *Meatless Mondays / Educate behavioral choices and the impact on environment*
- *Mitigate the use of pesticides*

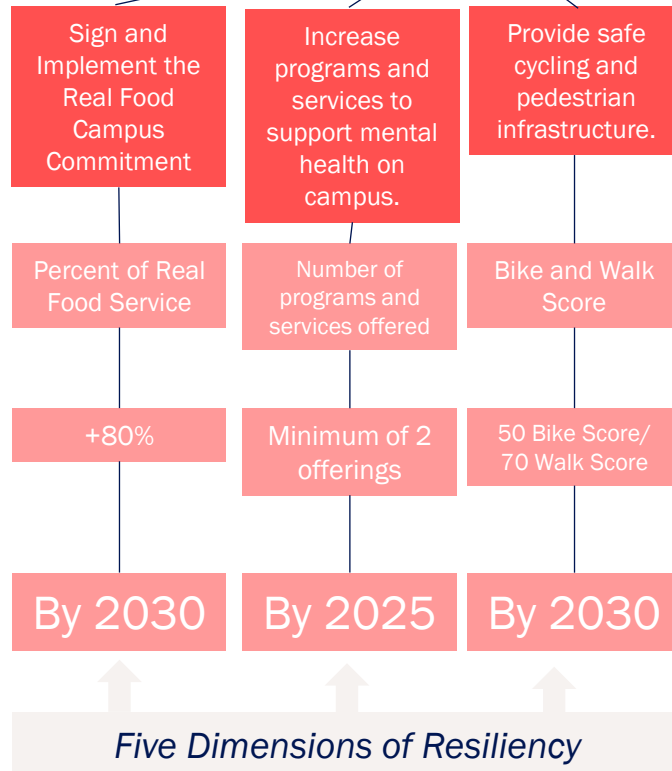


HEALTH AND WELL-BEING

Create an environment for campus and community to maintain their physical and emotional health and well-being.

Actions (per objective)

- ✓ **Benchmark sustainable food purchases in alignment with the Real Food Commitment guidelines.**
- ✓ **Benchmark mental health programs currently available and identify gaps of services or spaces needed to fulfill a more comprehensive**
- ✓ **Benchmark current bike and walk scores in the district and outlined improvement plans.**
- ✓ **Healthy meals available and affordable**



Other ideas from Open House:

- Gardens – Multiple use for food production and educational purposes
- Outreach – Educational signage connected to health and impact of your choices
- Food – Foodprint calculated with all food served on campus
- Air Quality

Discussion Question:

From what you've seen so far, what goals or actions are you most passionate about incorporating into the S-CAP?

What is next for us?

Nov - Jan

Prioritization and Goals

TASKS

Finalizing College Profiles

Establishing Benchmarks

**Setting Goals – short-term
and long-term**
Where, When

**Dashboard Development
(IEMP and TCO)**

Feb - April

Action Plan and Implementation

TASKS

Action Planning
Who, What, How

Monitoring

**Dashboard Development
(IEMP and TCO)**

First Read – April 2022