
Meeting Minutes



Architecture Engineering Planning Interiors

1650 Spruce Street, Suite 300
Riverside, CA 92507

Meeting Date	11.29.2021
To	Hussain Agah, Mehran Mohtasham, Myra Nava
From	DLR Group
Location	via ZOOM
Project	RCCD: Sustainability and Climate Action Plan
Project No.	N/A
Attendees	Linsey Graft, Lindsey Perez, Michael Collins, Esmeralda Abejar, Steve Marshall, Courtney Buchanan, Mehran Mohtasham, Mike Angeles, Teresa Friedrich Finneran
Purpose	Moreno Valley - Sustainability Task Force Kickoff

Agenda:

Project Introduction (5 mins)

Discussion – mission and purpose of the MVC Sustainability Task Force (15 mins)

Introduction of Planning Framework (10 mins)

Discussion – opportunities and challenges (15 mins)

Taking a peek ahead - Examples of TOP Values (10 mins)

Next Steps (5 mins)

Minutes: See slides attached.

Discussion #1: Given where the college is today meeting its sustainability goals, what do you feel the mission of this group should be now, and into the future?

- Want to effectively get proposals into a particular area to be implemented. Standards would be a good start and some of the other areas/meetings some of the attendees attend.
- Work toward building our universe/outreach on what is really needed around sustainability. Outreach/Engagement
- Implementation - banner program to advertise what they are doing and celebrate successes as the plan is implemented.
- What happens from all the money from the cans and bottle recycled -- what is the circular economy factor of one goal to help another goal.
- Grants/Partnerships -- what could this committee help with this aspect.
 - Partnership for Solar implementation (miss who MaryAnn said is a good partner)
- Ongoing Sustainability committee on campus to help keep focus on implementation

- Student focus as well.
- Faculty focus as well.

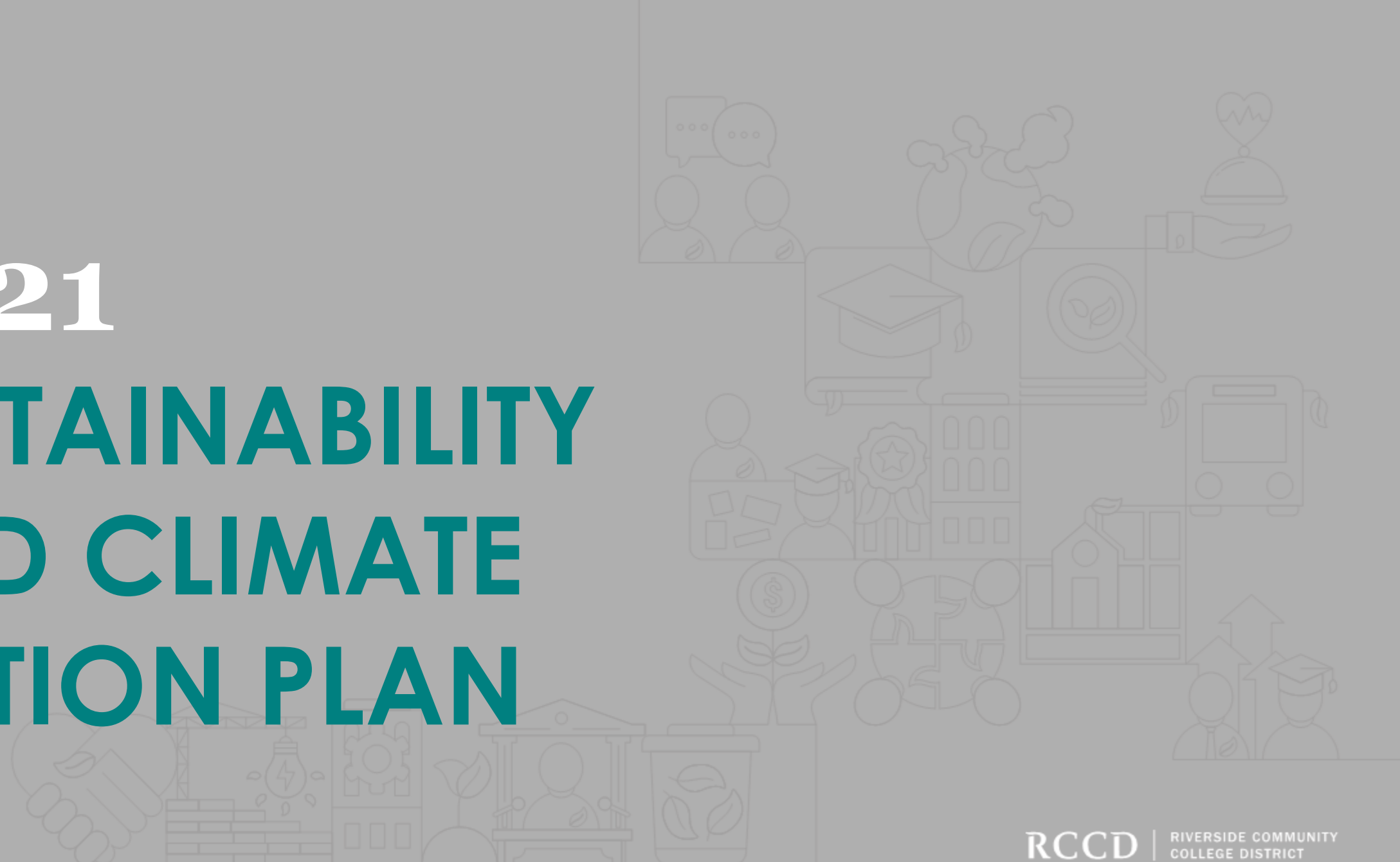
Discussion #2: Now that you've seen how the framework is planned, what opportunities (+) or challenges (-) do you think we will run into with the planning and implementation of the S-CAP at MVC?

- Recycling - look into contract for waste hauler away. Do we know the terms of this contract and how does it play a role in goal setting?
- Contracts -- many of the procurement practices might need to be reviewed to re-align with the goals.
- Sustainability Food -- meat centric culture -- how do we reduce our reliance on meat. Outreach and Education. Meatless days on campus and increase meatless options.
- Glasgow Conference -- calculated footprint for everything served. <https://www.earthday.org/foodprints-calculators/>
- Food Waste - 40% of food is wasted.
 - Typically make things to order so they not having an abundance of food wasted.
- Choices people make -- engagement from this committee.
- Measuring this are very important.
- What is the plan for committees/task force will help monitor the implementation?
- Shared Governance - Resource Committee -- what does this look like long-term?
- Identify who would take the first leap for each goal/action.

Discussion #3: From what you've seen so far, what goals or actions are you most passionate about incorporating into the S-CAP?

- Food Waste Reduction - TCO for composting on campus with a lot of human labor and campus engagement. It could save on fertilizer costs.
- Garden - Science and Food Services to provide a garden. Outdoor Classroom should be happening soon.
- Decarbonization - Faculty should move towards paperless to reduce waste. Policy Change?
- Recyclable straws -- TCO of alternative options.

2021 SUSTAINABILITY AND CLIMATE ACTION PLAN



Agenda

Project Introduction (*5 mins*)

Discussion – mission and purpose of the MVC Sustainability Task Force (*15 mins*)

Introduction of Planning Framework (*10 mins*)

Discussion – opportunities and challenges (*15 mins*)

Taking a peek ahead - Examples of TOP Values (*10 mins*)

Next Steps (*5 mins*)

Your Team



Leigh Anne Jones
Principal in Charge



Chris Lawrence
Project Manager



Prem Sundharam
Total Cost of Ownership
Leader



Lindsey Perez
Sustainability and Climate
Action Plan Leader



Linsey Graff
Engagement/STARS
Leader



Shona O'Dea
Integrated Energy
Master Plan Leader

Our Project Schedule

2021						2022						Project Complete May 31, 2023	
	Jun.	Jul.	Aug.	Sep.	Oct.	Nov.	Dec.	Jan.	Feb.	Mar.	Apr.	May	Jun.
TASKS	TASK 1: Project Initiation			TASK 2: Research and Analysis		TASK 3: Implementation Phase						TASK 4: Verification and Monitoring	
SCAP	Project Initiation			VALUES and Vision		Prioritization and Goals			Action Plan and Implementation			Final Plan	
IEMP				Campus Building Profiles	Energy Audits	Recommend ECMs			ECMs Finalized	Dashboard	Draft Plan	Final Plan	Final Approvals
TCO				Identify Assets	Classify Assets	Decision Criteria	Funding Analysis		Costing Assets	Asset Decisions		Comprehensive Asset Plan	Final Approvals
STARS													
Committee Workshop			Kick-Off Meeting	VALUES	Listening / Deep-Dives	Baselines		Goal Setting		Action Plan	Draft Plan	Final Plan	Final Approvals
Campus Work			President's Kick-off	VALUES	Open Houses	Campus Updates	-	-	College Action Plan		Draft Plan		Final Approvals
Deliverable Due													

We are here.

Scope and Deliverables



SCAP

Sustainability and Climate Action Plan

Establish an implementable roadmap towards holistic sustainability goals which sets RCCD up as a leader in addressing Environmental Stewardship and Climate Change.



IEMP

Integrated Energy Master Plan

Establish an implementable roadmap towards Carbon Neutrality at each campus.



TCO

Total Cost of Ownership Model

Develop a framework for cost-effective decision-making that identifies human and capital resources needed to address goals of the SCAP and IEMP.

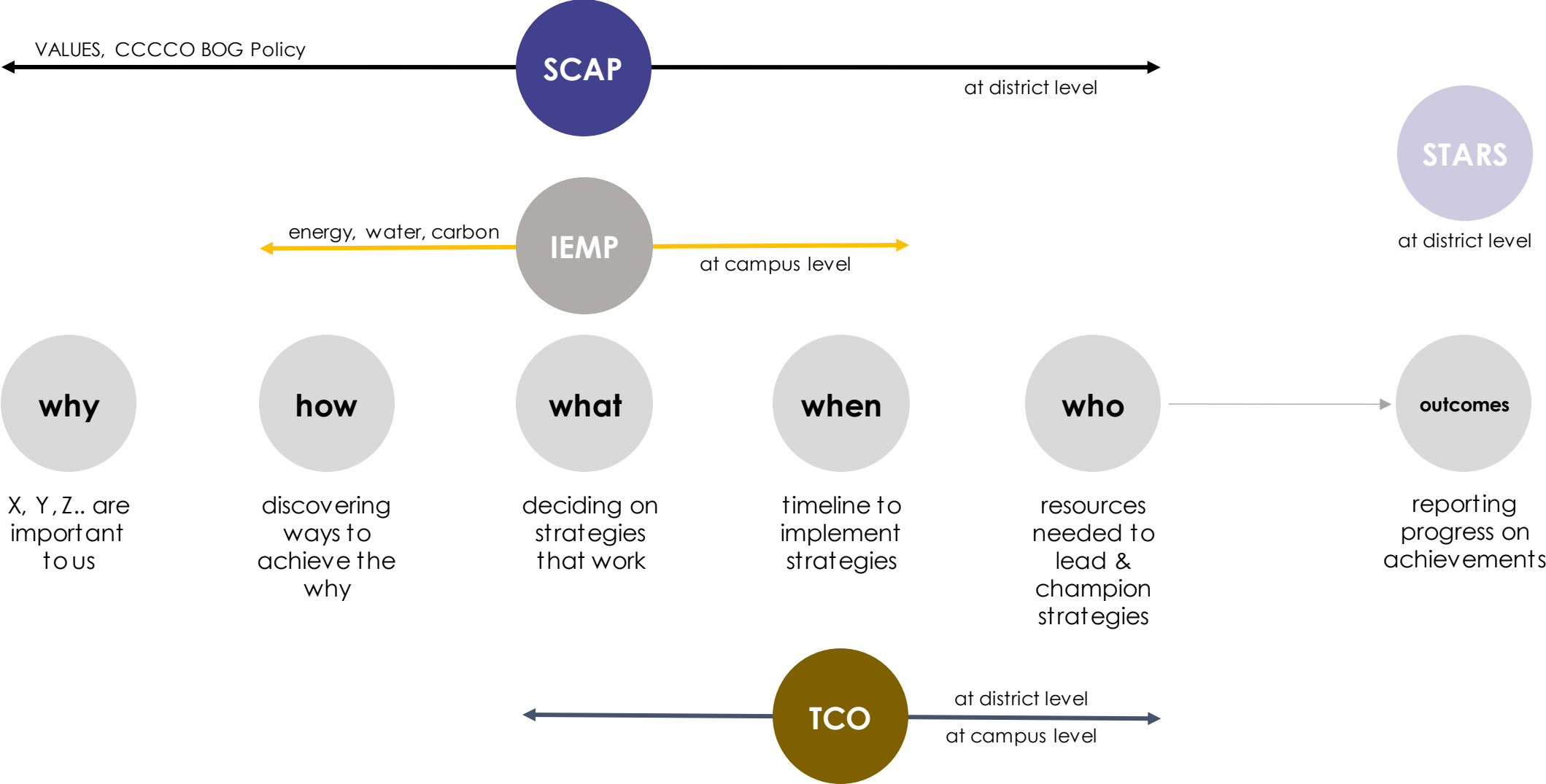


STARS

AASHE Stars Report

Establish a roadmap toward peer group recognition of your sustainability efforts. AASHE Stars is a third-party reporting framework connecting sustainability in the built environment and academics.

Deliverables



RCCD Board Policy

“RCCD district recognizes its responsibility to exercise environmental stewardship and to economically manage the use of buildings, land and natural resources”.

BP 5775 SUSTAINABILITY/ENVIRONMENTAL RESPONSIBILITY

References:

California Code of Regulations, Title 5, Sections 57050-57055

The Riverside Community College District recognizes its responsibility to exercise environmental stewardship and to economically manage the use of buildings, land and natural resources. It is the intent of the district to create a set of operating principles and guidelines in the execution of its responsibilities to facilities' design and operation; campus management and teaching and learning, thereby minimizing negative environmental impacts of activities under its control and oversight.

Principles and Guidelines of Sustainable Stewardship

1. Responsible and thoughtful utilization of land under its control;
2. Strive to make as energy efficient as economically practical, heating, ventilation, air conditioning, lighting systems, and all other mechanical (pumps, etc.) and building systems within the District;
3. Pursuant to Board Resolution 13-09/10, all new facilities of the District will be planned, designed and constructed to meet LEED (Leadership in Energy and Environmental Design) certification standards and, to the greatest extent practical, major renovations are to be designed to also meet LEED standards.
4. Promote initiatives that advance a sustainable environment by partnerships with energy production and other agencies, public and private.
5. Operating practices District-wide that demonstrate the commitment to sustainable management, such as, but not limited to, recycling programs, waste reduction, modified irrigation systems to minimize water usage and/or the use of reclaimed water, xeriscape and the use of native and drought resistant plants in landscaping projects.
6. Encouragement of curriculum in environmental sustainability.

Date Adopted: January 25, 2011

Formerly: 6870

Roles and Responsibilities

District Sustainability Committee

This Districtwide committee is tasked with:

- Establishing sustainability & environmental responsibility
- Defining charge, goals, objectives, criteria, and timeline
- Developing sustainability & environmental responsibility plan
- Implementing sustainability & environmental responsibility plan
- Regularly monitoring and reporting progress

To define principles and guidelines, a **districtwide sustainability committee** (Subgroup of Facilities Planning Development Council) was formed, in which **MVC representatives include, Fabian Biancardi, Laurie Crouse, Majd Askar, and Ron Kirkpatrick.**

Moreno Valley College Sustainability Task Force

To assist in further defining MVC's priorities and goals, an MVC task force is being formed.

For the S-CAP, we will need the Sustainability Committee to attend:

- Kick-off Workshop - November
- Action and Implementation Workshops – February and March
- Draft Plan Review - first and second reads – April, May, and June

Once the plan is approved, that task force plan the implementation of the strategies on campus. This implementation will likely be ongoing for many years, as the S-CAP will identify short-mid-and long-term goals.

Discussion Question:

Given where the college is today meeting its sustainability goals, **what do you feel the mission of this group should be now, and into the future?**

WORKSHOP 01: MVC Top VALUES

Moreno Valley College

LEADS TO

- OPERATIONAL OPTIMIZATION**
How can your project optimize energy use and reduce operational carbon emissions?
- ENERGY COST REDUCTION**
How can your project reduce energy costs and operational carbon emissions?

DECARBONIZATION: ENERGY
Where is your project sourcing its energy from? How can your project replace fossil fuels with low to no-carbon energy sources?

DECARBONIZATION: TRANSPORTATION
How can your project reduce transportation-related emissions and transition away from fossil fuels?

emissions from purchased energy you everything else

DECARBONIZATION: MATERIALS
How can material selection reduce embodied carbon and operational carbon consumption to mitigate global warming?

DECARBONIZATION: SEQUESTRATION
How can the outdoor landscape help sequester carbon and improve your site's outdoor environment?

DECARBONIZATION

LEADS TO

- AIR QUALITY**
How can your project improve air quality and reduce greenhouse gas emissions?
- ECOSYSTEM SERVICES**
How can your project restore, enhance, or create ecosystem services?

BIOPHILIA
How can your project incorporate patterns and influences from nature into the design of the built environment? What natural experiences do users crave and how can it support occupant health and performance?

BUILDING ECOLOGY
How can intentional design choices at the building level, such as dark sky lighting and avian-friendly design, promote ecosystem health?

WORK WITH AND IN NATURE

AIR QUALITY
How can your project improve air quality and reduce greenhouse gas emissions?

OUTDOOR ENVIRONMENTAL QUALITY
How can your project's outdoor spaces restore ecology, build communities, and create a strong sense of place?

BUILDING RESILIENCY
What intentional design features in a facility can help respond to and support the primary functions for users during and after an unexpected event?

LEADS TO

- MULTI-CULTURAL RELEVANCE**
How can your project design and construction be inclusive and responsive to the needs and preferences of diverse groups of people?
- INDIVIDUAL FULFILLMENT**
How can your project design and construction be inclusive and responsive to the needs and preferences of diverse groups of people?

ENVIRONMENT THAT SUPPORTS INDIVIDUALITY

INCLUSION
How does your project look beyond its base program to provide opportunities for groups that may be marginalized? How can it create a sense of belonging for individuals of all backgrounds and identities?

SUPPORTS

- VISUAL COMFORT**
How can your project design and construction be inclusive and responsive to the needs and preferences of diverse groups of people?
- AIR QUALITY**
How can your project improve air quality and reduce greenhouse gas emissions?

OUR PLANNING FRAMEWORK: Organizing the VALUES (Our Why)

Included

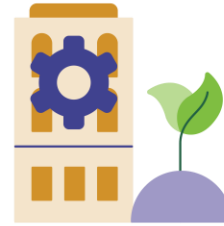
Includes the creation of goals and metrics within the S-CAP



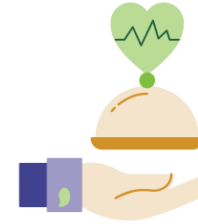
Decarbonization and Climate Justice



Waste / Procurement



Eco-systems / Water



Health and Well-being



Resiliency

Influenced

Would be included in an update with a sustainability lens / new plan



Academics



Engagement



Trust and Transparency

Reinforced

Planning and metrics already exist in other plans



Community Partnerships



Equity and Social Justice

VALUES AND OTHER FRAMEWORKS

Top VALUES

Decarbonization and Climate Justice

Waste / Procurement

Eco-systems / Water

Health and Well-being

Resiliency

Academics

Engagement

Trust and Transparency

Community Partnerships

Equity and Social Justice

CCCCO

Operations

Gap

Academics

Engagement

Planning and Administration

AASHE Stars

Operations

Gap

Academic and Curriculum

Engagement

Planning and Administration

Innovation and Leadership

Impact Area

IMPACT AREAS are the top **VALUES** as created collectively by the District and Colleges.



Decarbonization and Climate Justice



Waste / Procurement



Eco-systems / Water



Health and Well-being



Resiliency



Academics



Engagement



Trust and Transparency



Community Partnerships



Equity and Social Justice

Impact Area

Goal or Desired Outcome

IMPACT AREAS are the top VALUES as created collectively by the District and Colleges.

GOALS AND OUTCOMES establish long-term milestones that the District and Colleges will work toward. These were established by cross-referencing System and Stars frameworks with Impact Areas.

Impact Area

Goal or Desired Outcome

Objectives

IMPACT AREAS are the top VALUES as created collectively by the District and Colleges.

GOALS AND OUTCOMES establish long-term milestones that the District and Colleges will work toward. These were established by cross-referencing System and Stars frameworks with Impact Areas.

OBJECTIVES outline measurable actions were established by from District and Campus engagement, System mandates, and HiEd best practices.

ACTIONS are the initiatives that it will take to get meet your goal / outcome

Actions (per objective)

Impact Area

IMPACT AREAS are the top VALUES as created collectively by the District and Colleges.

ACTIONS are the initiatives that it will take to get meet your goal / outcome

Goal or Desired Outcome

GOALS AND OUTCOMES establish long-term milestones that the District and Colleges will work toward. These were established by cross-referencing System and Stars frameworks with Impact Areas.

Actions (per objective)

Objectives

OBJECTIVES outline measurable actions were established by from District and Campus engagement, System mandates, and HiEd best practices.

Measures

MEASURES align with the objectives to manage what success will look.

Metrics

METRICS outline how the objective will be measured based on the data available or data required.

Milestones

MILESTONES represent the timeline associated with each objective. These outline short-, mid-, and long-term strategies.

Impact Area

IMPACT AREAS are the top VALUES as created collectively by the District and Colleges.

Goal or Desired Outcome

GOALS AND OUTCOMES establish long-term milestones that the District and Colleges will work toward. These were established by cross-referencing System and Stars frameworks with Impact Areas.

ACTIONS are the initiatives that it will take to get meet your goal / outcome

Actions (per objective)

Objectives

OBJECTIVES outline measurable actions were established by from District and Campus engagement, System mandates, and HiEd best practices.

Measures

MEASURES align with the objectives to manage what success will look.

Metrics

METRICS outline how the objective will be measured based on the data available or data required.

Milestones

MILESTONES represent the timeline associated with each objective. These outline short-, mid-, and long-term strategies.

Five Dimensions of Resiliency

RESILIENCY overlays risk-management and the five dimensions of resiliency (Ecosystem, Financial, Human Health, Infrastructure, Social) into each Impact Area

Five Dimensions of Resilience



Social Equity &
Governance



Health & Wellness



Ecosystem
Services



Infrastructure



Economic



RECYCLING AND WASTE REDUCTION

IMPACT AREAS are the top ***VALUES*** as created collectively by the District and Colleges.



RECYCLING AND WASTE REDUCTION

Achieve zero waste to landfill.

IMPACT AREAS are the top VALUES as created collectively by the District and Colleges.

GOALS AND OUTCOMES establish long-term milestones that the **District and Colleges will work toward**. These were established by cross-referencing System and Stars frameworks with Impact Areas.



RECYCLING AND WASTE REDUCTION

Achieve zero waste to landfill.

Reduce the total weight of non-construction waste.

Tons of non construction waste generated

-20%

By 2025

IMPACT AREAS are the top VALUES as created collectively by the District and Colleges.

GOALS AND OUTCOMES establish long-term milestones that the District and Colleges will work toward. These were established by cross-referencing System and Stars frameworks with Impact Areas.

OBJECTIVES outline measurable actions were established by from District and Campus engagement, System mandates, and HiEd best practices.

MEASURES align with the objectives to manage what success will look.

METRICS outline how the objective will be measured based on the data available or data required.

MILESTONES represent the timeline associated with each objective. These outline short-, mid-, and long-term strategies.



RECYCLING AND WASTE REDUCTION

Achieve zero waste to landfill.

Reduce the total weight of non-construction waste.

Tons of non-construction waste generated

-20%

By 2025

Increase diversion rates for non-construction waste.

Tons of non-construction waste diverted

+55%

By 2030

IMPACT AREAS are the top **VALUES** as created collectively by the District and Colleges.

GOALS AND OUTCOMES establish long-term milestones that the District and Colleges will work toward. These were established by cross-referencing System and Stars frameworks with Impact Areas.

OBJECTIVES outline measurable actions were established by from District and Campus engagement, System mandates, and HiEd best practices.

MEASURES align with the objectives to manage what success will look.

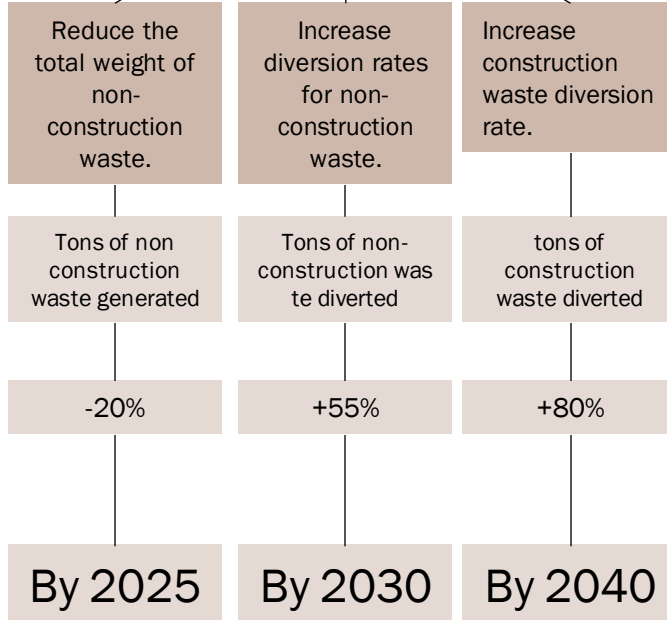
METRICS outline how the objective will be measured based on the data available or data required.

MILESTONES represent the timeline associated with each objective. These outline short-, mid-, and long-term strategies.



RECYCLING AND WASTE REDUCTION

Achieve zero waste to landfill.



IMPACT AREAS are the top VALUES as created collectively by the District and Colleges.

GOALS AND OUTCOMES establish long-term milestones that the District and Colleges will work toward. These were established by cross-referencing System and Stars frameworks with Impact Areas.

OBJECTIVES outline measurable actions were established by from District and Campus engagement, System mandates, and HiEd best practices.

MEASURES align with the objectives to manage what success will look.

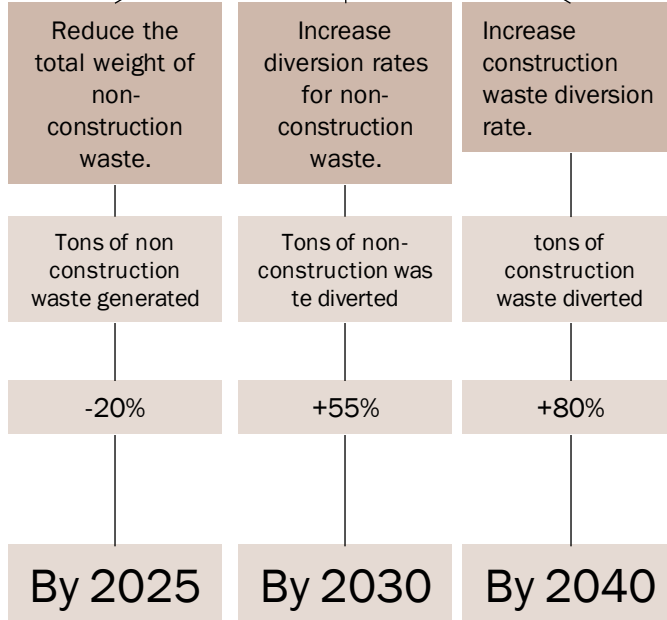
METRICS outline how the objective will be measured based on the data available or data required.

MILESTONES represent the timeline associated with each objective. These outline short-, mid-, and long-term strategies.



RECYCLING AND WASTE REDUCTION

Achieve zero waste to landfill.



ACTIONS are the initiatives that it will take to get meet your goal / outcome

Actions (per objective)

- ✓ **Complete an annual waste audit**
- ✓ **Implement a campus-wide recycling program paired with educational signage**
- ✓ **Continue paperless courses**
- ✓ **Create a district wide supply and furniture swap program**
- ✓ **Etc.**
- ✓ **Etc.**
- ✓ **Etc.**

IMPACT AREAS are the top VALUES as created collectively by the District and Colleges.

GOALS AND OUTCOMES establish long-term milestones that the District and Colleges will work toward. These were established by cross-referencing System and Stars frameworks with Impact Areas.

OBJECTIVES outline measurable actions were established by from District and Campus engagement, System mandates, and HiEd best practices.

MEASURES align with the objectives to manage what success will look.

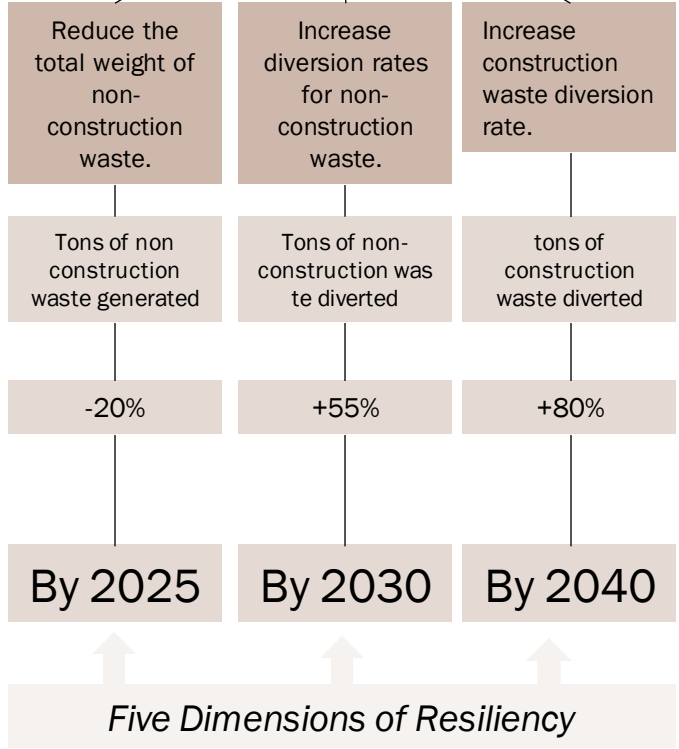
METRICS outline how the objective will be measured based on the data available or data required.

MILESTONES represent the timeline associated with each objective. These outline short-, mid-, and long-term strategies.



RECYCLING AND WASTE REDUCTION

Achieve zero waste to landfill.



ACTIONS are the initiatives that it will take to get meet your goal / outcome

Actions (per objective)

- ✓ Complete an annual waste audit
- ✓ Implement a campus-wide recycling program paired with educational signage
- ✓ Continue paperless courses
- ✓ Create a district wide supply and furniture swap program
- ✓ Etc.
- ✓ Etc.
- ✓ Etc.

IMPACT AREAS are the top VALUES as created collectively by the District and Colleges.

GOALS AND OUTCOMES establish long-term milestones that the District and Colleges will work toward. These were established by cross-referencing System and Stars frameworks with Impact Areas.

OBJECTIVES outline measurable actions were established by from District and Campus engagement, System mandates, and HiEd best practices.

MEASURES align with the objectives to manage what success will look.

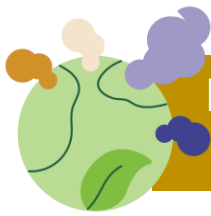
METRICS outline how the objective will be measured based on the data available or data required.

MILESTONES represent the timeline associated with each objective. These outline short-, mid-, and long-term strategies.

RESILIENCY overlays risk-management and the five dimensions of resiliency (Ecosystem, Financial, Human Health, Infrastructure, Social) into each Impact Area

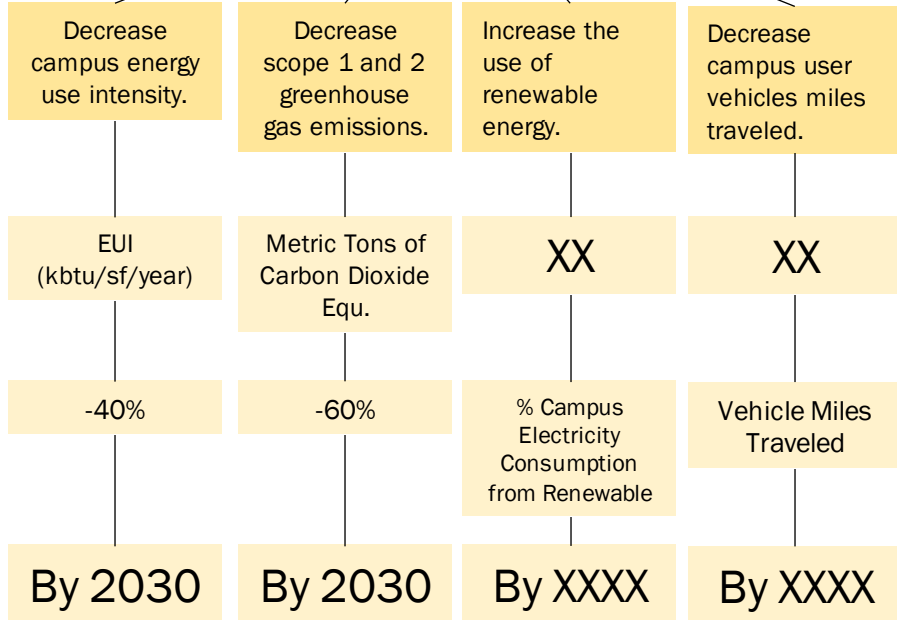
Discussion Question:

Now that you've seen how the framework is planned, **what opportunities (+) or challenges (-) do you think we will run into with the planning and implementation of the S-CAP at MVC?**



ENERGY USE, DECARBONIZATION, AND CLIMATE JUSTICE

Achieve net-zero emissions.



Five Dimensions of Resiliency

Actions (per objective)

- ✓ Partner with local and regional transit to ensure routes are convenient / timely
- ✓ Align course schedules with transit schedules



RECYCLING AND WASTE REDUCTION

Achieve zero waste to landfill.

Reduce the total weight of non-construction waste.	Increase diversion rates for non-construction waste.	Increase construction waste diversion rate.
--	--	---

Tons of non construction waste generated	Tons of non-construction waste diverted	tons of construction waste diverted
--	---	-------------------------------------

-20%	+55%	+80%
------	------	------

By 2025	By 2030	By 2040
---------	---------	---------

Five Dimensions of Resiliency

Add Food Waste

Actions (per objective)

- ✓ **Complete an annual waste audit**
- ✓ **Implement a campus-wide recycling program paired with educational signage**
- ✓ **Continue paperless courses**
- ✓ **Create a district wide supply and furniture swap program**
- ✓ **Etc.**
- ✓ **Etc.**
- ✓ **Etc.**

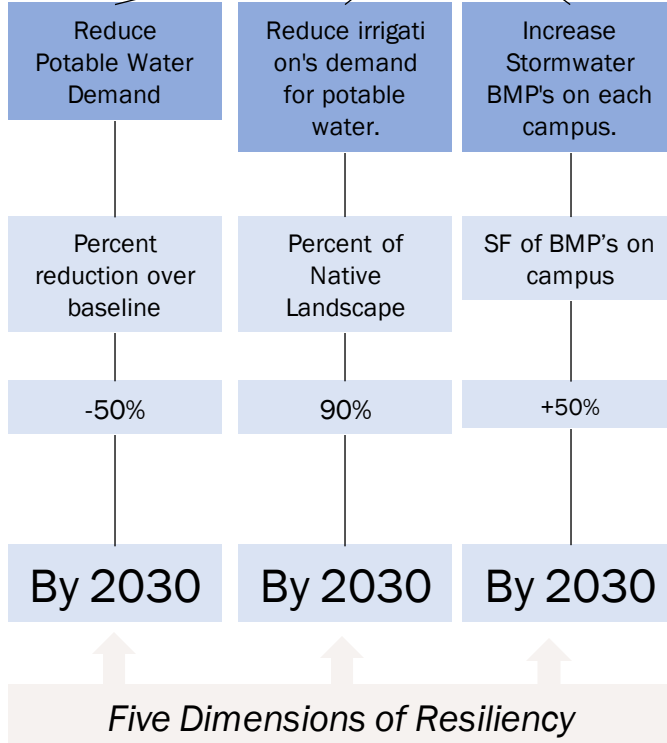


WATER AND ECO-SYSTEMS

Create and implement a holistic approach to water services on campus to achieve water balance across the district.

Actions (per objective)

- ✓ **Benchmark potable water usage and create a water plan.**
- ✓ **Utilize water efficient fixtures in all new buildings and major renovations**



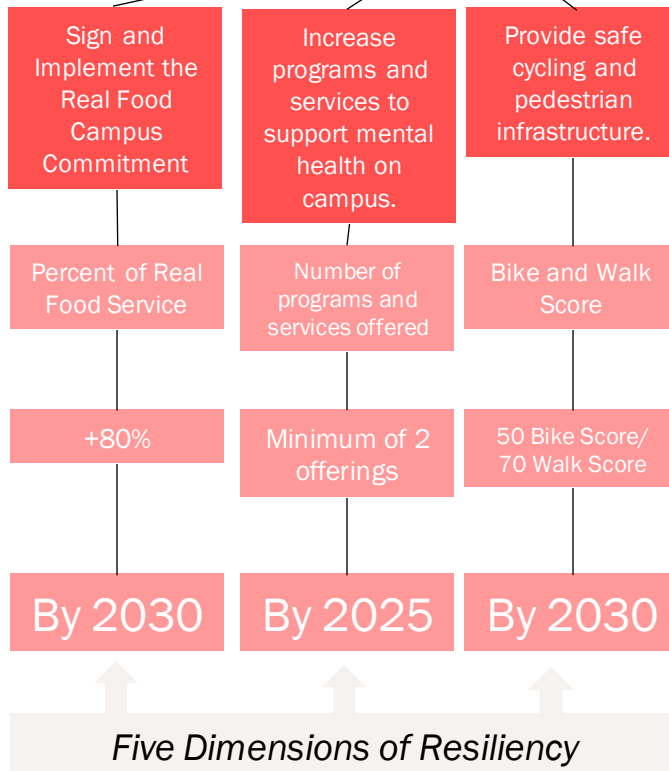


HEALTH AND WELL-BEING

Create an environment for campus and community to maintain their physical and emotional health and well-being.

Actions (per objective)

- ✓ **Benchmark sustainable food purchases in alignment with the Real Food Commitment guidelines.**
- ✓ **Benchmark mental health programs currently available and identify gaps of services or spaces needed to fulfill a more comprehensive**
- ✓ **Benchmark current bike and walk scores in the district and outlined improvement plans.**
- ✓ **Healthy meals available and affordable**



Discussion Question:

From what you've seen so far, what goals or actions are you most passionate about incorporating into the S-CAP?

What is next for us?

Nov - Jan

Prioritization and Goals

TASKS

Finalizing College Profiles

Establishing Benchmarks

**Setting Goals – short-term
and long-term**
Where, When

**Dashboard Development
(IEMP and TCO)**

Feb - April

Action Plan and Implementation

TASKS

Action Planning
Who, What, How

Monitoring

**Dashboard Development
(IEMP and TCO)**

First Read – April 2022