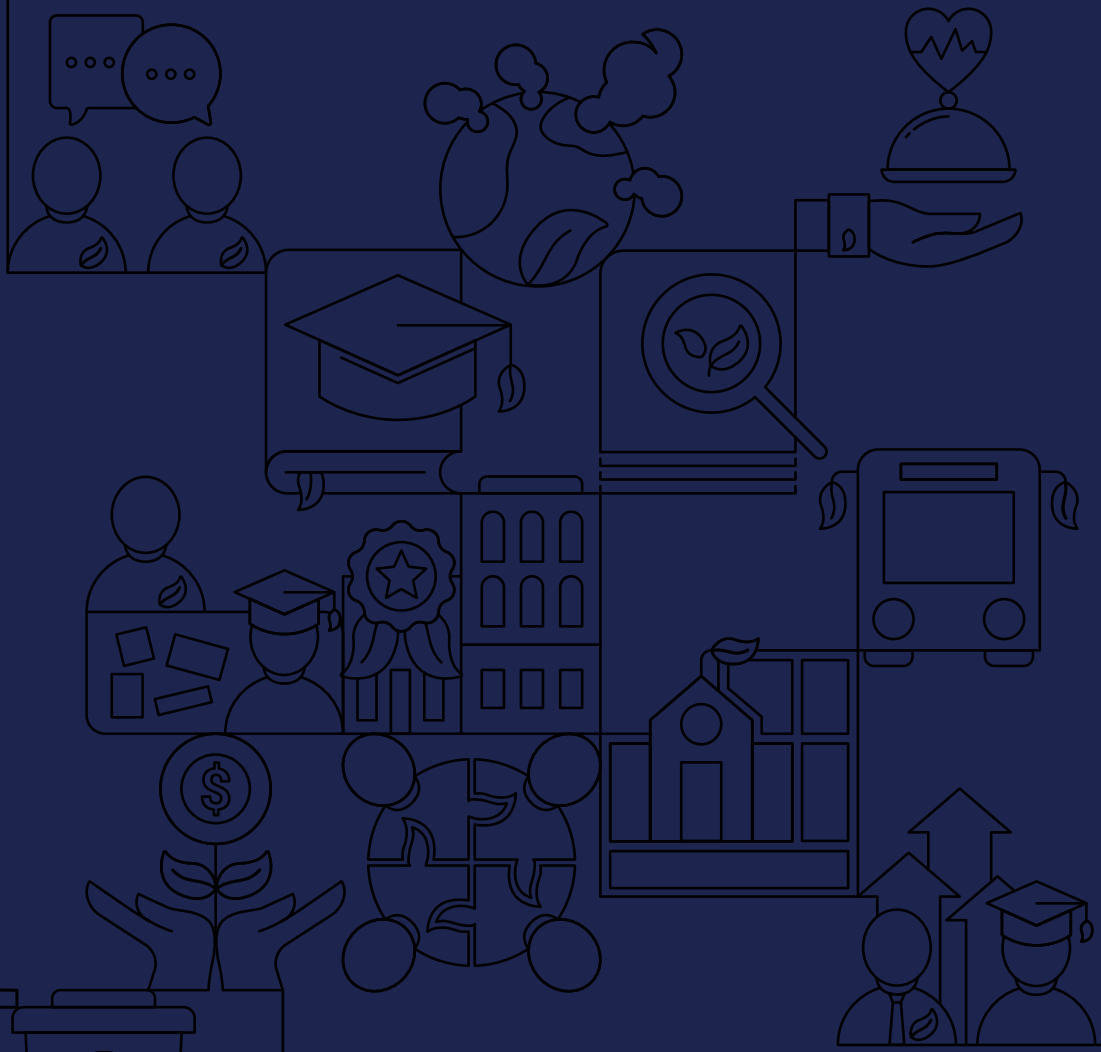


**2021**

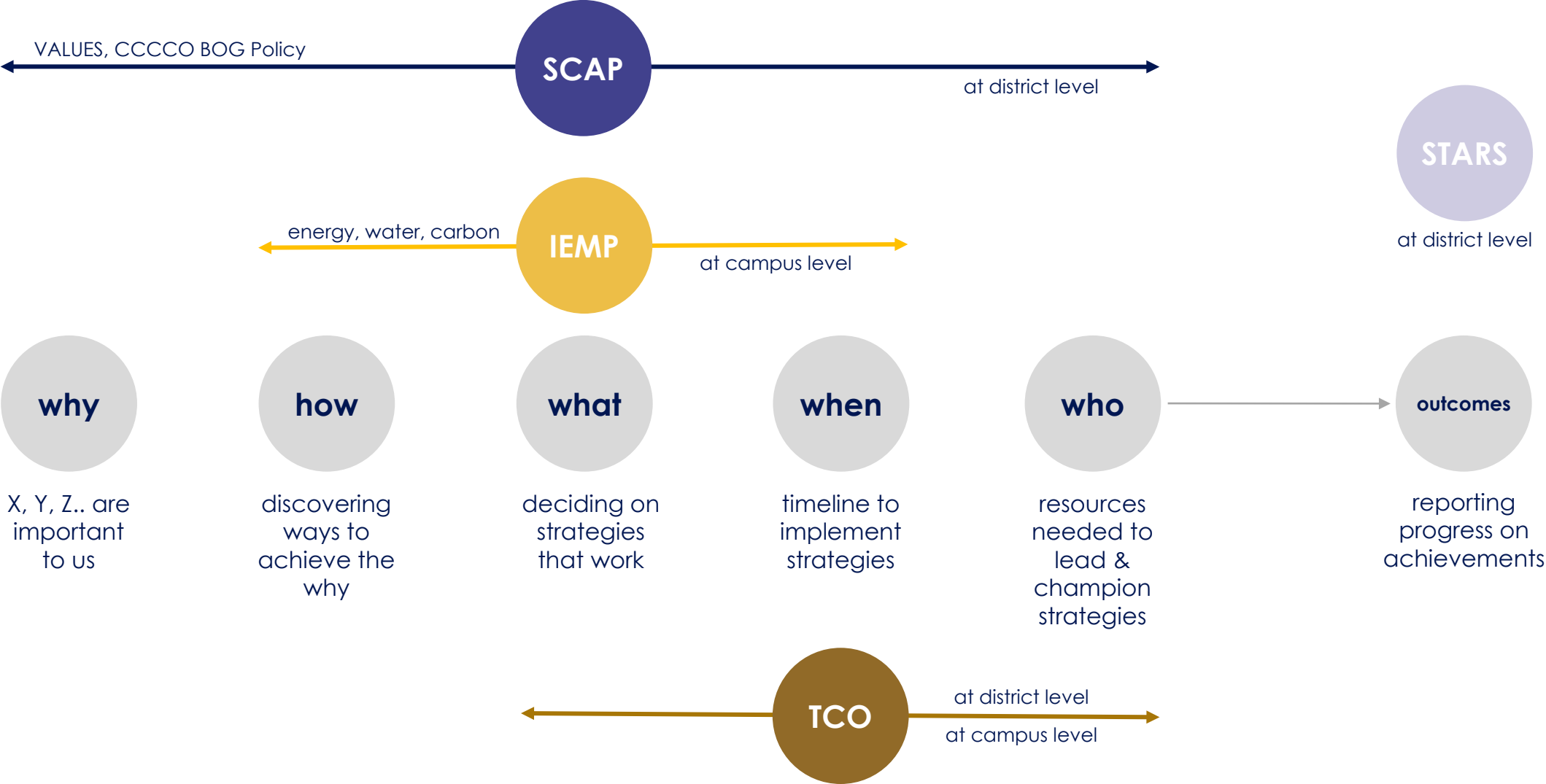
**SUSTAINABILITY  
AND CLIMATE  
ACTION PLAN**



One goal of the Sustainability and Climate Action Plan is to identify ways for **environmental, social and financial sustainability** to be fostered at each campus in the district.



# Deliverables



# Our Project Schedule

	2021						2022						Project Complete May 31, 2023
	Jun.	Jul.	Aug.	Sep.	Oct.	Nov.	Dec.	Jan.	Feb.	Mar.	Apr.	May	Jun.
TASKS	TASK 1: Project Initiation			TASK 2: Research and Analysis			TASK 3: Implementation Phase						TASK 4: Verification and Monitoring
SCAP	Project Initiation			VALUES and Vision		Prioritization and Goals		Action Plan and Implementation			Final Plan		
IEMP				Campus Building Profiles	Energy Audits	Recommend ECMs			ECMs Finalized	Dashboard	Draft Plan	Final Plan	Final Approvals
TCO				Identify Assets	Classify Assets	Decision Criteria	Funding Analysis		Costing Assets	Asset Decisions		Comprehensive Asset Plan	Final Approvals
STARS													
Committee Workshop			Kick-Off Meeting	VALUES	Listening / Deep-Dives	Baselines		Goal Setting		Action Plan	Draft Plan	Final Plan	Final Approvals
Campus Work			President's Kick-off	VALUES	Open Houses	Campus Updates	-	-	College Action Plan		Draft Plan		Final Approvals
Deliverable Due													

**We are here.**

# Tracking Our Progress

## PHASE 01: VISIONING AND VALUES

September - October

- ✓ ~~Lead Sustainability VALUES Workshop~~
- ✓ ~~Host listening tours, focus groups and open forums with campus community~~
- ✓ ~~Benchmark Energy Data for all campuses~~
- ✓ Create Campus Building Profiles

## PHASE 02: PRIORITIES AND GOALS

November - January

- ✓ Synthesize the top VALUES for the District
- ✓ Establish priorities and discuss goals for short, mid and long-term
- ✓ Develop cost models around goals

## PHASE 03: ACTION PLAN AND IMPLEMENTATION

February - April

- ✓ Document long-term vision and goals
- ✓ Identify short-term, mid-term and long-term initiatives to meet district goals.
- ✓ Develop total cost of ownership cost models for each goal, including personnel needed
- ✓ Present Draft Of Deliverables

## PHASE 04: FINAL PLAN AND APPROVALS

May - June

- ✓ Final presentation adoption and approval
- ✓ Establish training needs for key district personnel
- ✓ Visualize Monitoring Dashboard of the Plans
- ✓ Fine tune and update the dashboard

# Integrated Energy Master Plan

- a long-term strategy of achieving significant reductions in energy, water, greenhouse gas emissions.



Discovery

## Data Points

- ✓ Electricity Bills
- ✓ Gas Bills
- ✓ Water Bills
- ✓ Facility Manager Interviews
- ✓ Site Walkthrough

## Data Gaps

- Meter Assignments
- Facility Manager Verification

# Total Cost of Ownership

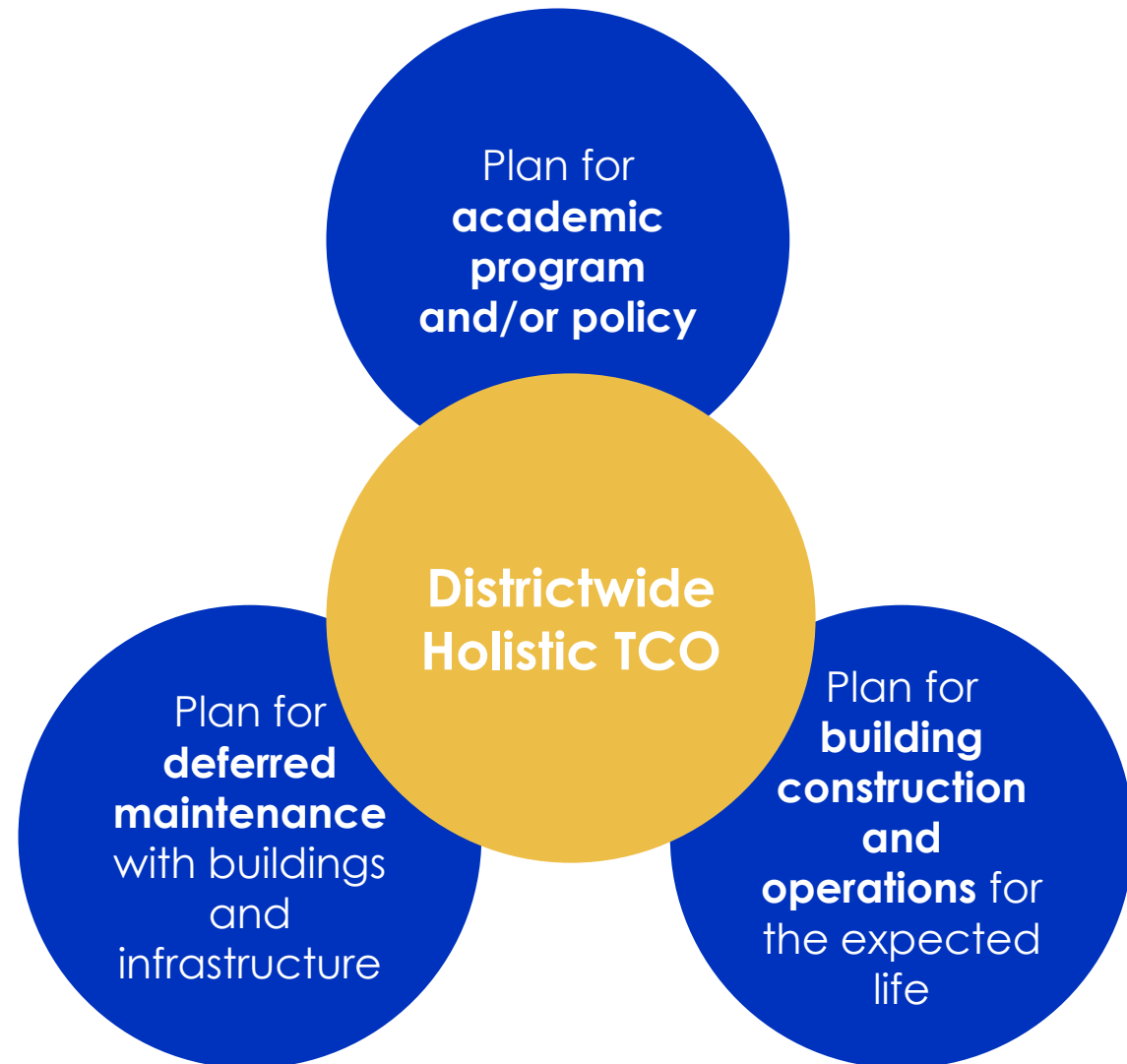
Initial Cost

+

Operational Cost

(including human resources  
and technology needed)

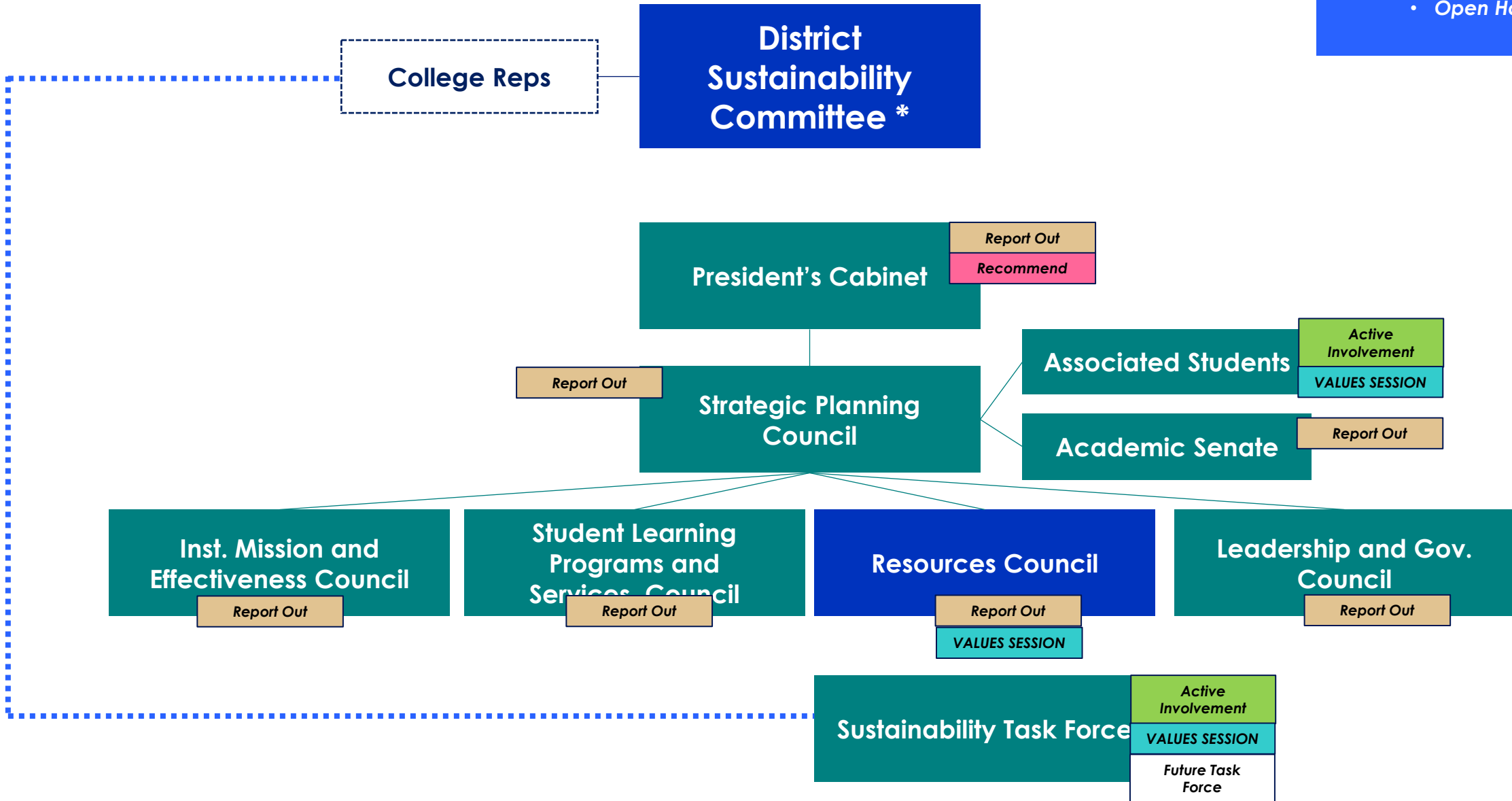
**TCO is a requirement for  
Accreditation as well as  
Bond Measures**



# Moreno Valley College: Engagement Structure

Other Outreach and Engagement:

- Open Houses





# Moreno Valley College: Engagement to Date

## KICK-OFF

### KICK-OFF MEETINGS

**President's Cabinet**  
September 1, 2021

**Campus Site Visits**  
September 13, 2021

## WORKSHOP 01

### VALUES WORKSHOPS

**Associated Students**  
September 20, 2021

**Resources Council**  
September 9, 2021

## WORKSHOP 02

### OPEN HOUSE

**Open to all Students,  
Faculty, and Staff**  
October 19, 2021

## WORKSHOP 03

### REPORT BACK AND BENCHMARKING

**Resources Council**  
November 18, 2021

**President's Cabinet**  
December 1, 2021

**Sustainability Task  
Force\***  
November 29, 2021

*\* 60-min workshop*

# WORKSHOP 01: VALUES



**ACCESS + MOBILITY**

How can your project advocate and celebrate transit-oriented design, connections between transit hubs, and walkable communities?

- Decarbonization: Transportation
- Multi-Modal Transportation
- Walkability and Safety



**COMMUNITY CONNECTOR**

How can your project support its surrounding community, build community partnerships, and connect residents to shared resources?

- Community Access
- Community Partnerships
- Neighborhood Vitality
- Transparency: Decision-Making



**CULTURE + IDENTITY**

How can your project celebrate its history and cultural context to develop a strong sense of place that speaks to the identities of occupants and surrounding communities?

- Beauty & Inspiration
- Historical Context of Place
- Inclusion
- Individual vs. Collective Placemaking
- Multi-Cultural Relevance
- Organizational Transformation



**OUTDOOR ENVIRONMENTAL QUALITY**

How can your project's outdoor spaces restore ecology, build community, and create a strong sense of place?

- Building Ecology
- Decarbonization: Sequestration
- Ecosystem Services
- Public Space
- Site Ecology



**EQUITABLE DEVELOPMENT**

How can your project promote affordability, provide access to opportunity, and advocate for those in need?

- Climate Justice
- Economic Development Programming
- Equitable Development
- Siting
- Equity
- Land Use
- Social Justice



**HEALTH + WELL-BEING**

How can intentional design features actively promote users' emotional and physical well-being and encourage them to make healthier choices?

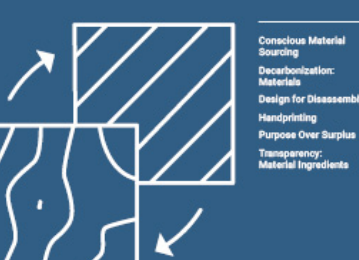
- Active Spaces
- Biophilia
- Evidence-Based Modalities
- Nourishment
- Play



**INDOOR ENVIRONMENTAL QUALITY**

How can your project support user comfort and productivity?

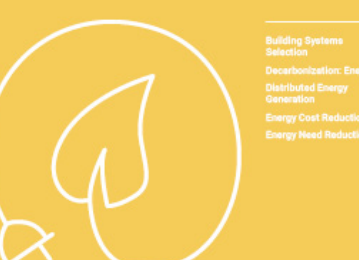
- Acoustic Comfort
- Air Quality
- Thermal Comfort
- Visual Comfort



**MATERIALS IMPACT**

How do your materials choices support healthy ecology, communities, and economies?


- Conscious Material Sourcing
- Decarbonization: Materials
- Design for Disassembly
- Handprinting
- Purpose Over Surplus
- Transparency: Material Ingredients



**ENERGY**

How can changes in energy infrastructure support your broader mission, reduce costs, and build a healthier planet?

- Building Systems Selection
- Decarbonization: Energy Generation
- Energy Cost Reduction
- Energy Need Reduction



**RESILIENCY**

How can your project help its users and community adapt to and recover from unexpected situations?


- Building Resiliency
- Community Resiliency
- Economic Resiliency
- Emergency Planning
- Emotional Resiliency
- Risk Adaptation & Mitigation



**PROCUREMENT + OPERATIONS**

How can procurement, building operations, and management practices support your broader project goals?

- Conscious Cleaning & Upkeep Goods & Supplies
- Operational Optimization
- Regulatory Partnerships
- Safety & Security
- Transparency: Building Performance
- Waste



**WATER**

What connections to water are important to your users and neighboring communities?

- (Storm) Water Management
- Hydrological Balance
- Potable Water Quality
- Water Context of Place
- Water Self-Sufficiency

# WORKSHOP 01: MVC Top VALUES

Moreno Valley College

**LEADS TO**

**OPERATIONAL OPTIMIZATION**  
How can your project optimize energy use and reduce operational carbon emissions?

**ENERGY COST REDUCTION**  
How can your project reduce energy costs and operational carbon emissions?

**DECARBONIZATION: ENERGY**  
Where is your project sourcing its energy from? How can your project replace fossil fuels with low to no-carbon energy sources?

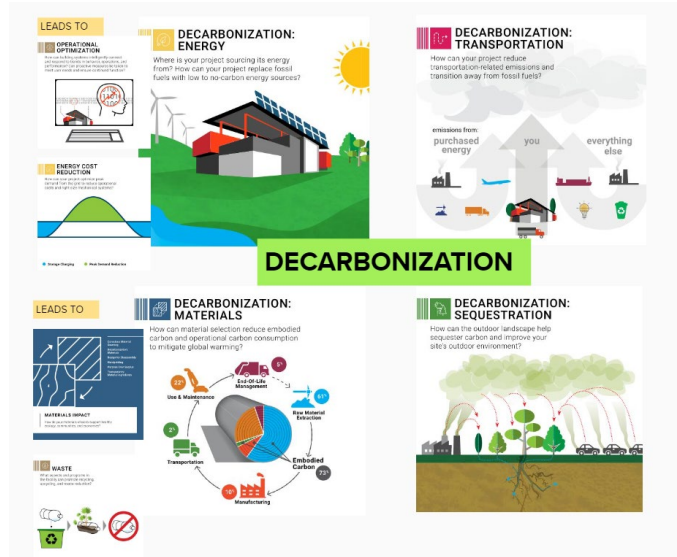
**DECARBONIZATION: TRANSPORTATION**  
How can your project reduce transportation-related emissions and transition away from fossil fuels?

**DECARBONIZATION: MATERIALS**  
How can material selection reduce embodied carbon and operational carbon consumption to mitigate global warming?

**WASTE**  
How can your project reduce waste and embodied carbon?

**DECARBONIZATION: SEQUESTRATION**  
How can the outdoor landscape help sequester carbon and improve your site's outdoor environment?

**DECARBONIZATION**



**LEADS TO**

**AIR QUALITY**  
How can your project improve air quality and reduce greenhouse gas emissions?

**ECOSYSTEM SERVICES**  
How can your project restore, enhance, or create ecosystem services?

**BIOPHILIA**  
How can your project incorporate patterns and influences from nature into the design of the built environment? What natural experiences do users crave and how can it support occupant health and performance?

**BUILDING RESILIENCY**  
What intentional design features in a facility can easily respond to and support the primary functions for users during and after an unexpected event?

**OUTDOOR ENVIRONMENTAL QUALITY**  
How can your project's outdoor spaces restore ecology, build community, and create a strong sense of place?

**WORK WITH AND IN NATURE**



**LEADS TO**

**MULTI-CULTURAL RELEVANCE**  
How can your project design and construction be inclusive and equitable for all users and communities? How can it support the primary functions of the facility?

**INDIVIDUAL FULFILLMENT**  
How can your project support the ability of users to engage in meaningful work, learn, and grow? How can it support the primary functions of the facility?

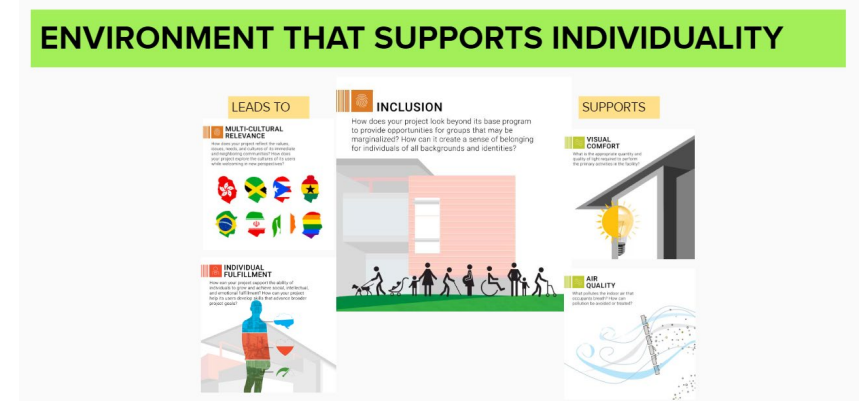
**INCLUSION**  
How does your project look beyond its base program to provide opportunities for groups that may be marginalized? How can it create a sense of belonging for individuals of all backgrounds and identities?

**SUPPORTS**

**VISUAL COMFORT**  
How can your project design and construction support the primary functions of the facility?

**AIR QUALITY**  
How can your project's outdoor spaces restore ecology, build community, and create a strong sense of place?

**ENVIRONMENT THAT SUPPORTS INDIVIDUALITY**



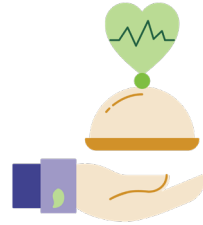
# OUR PLANNING FRAMEWORK: Organizing the VALUES (Our Why)

## Included

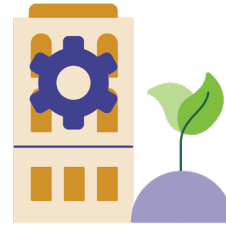
*Includes the creation of goals and metrics within the S-CAP*



Decarbonization and Climate Justice



Health and Well-being



Eco-systems / Water



Waste / Procurement



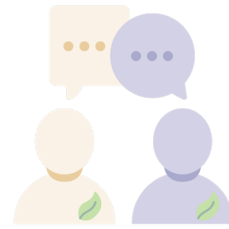
Resiliency

## Influenced

*Would be included in an update with a sustainability lens / new plan*



Academics



Engagement



Trust and Transparency

## Reinforced

*Planning and metrics already exist in other plans*



Community Partnerships



Equity and Social Justice



# WORKSHOP 02: Moreno Valley College – OPEN HOUSE!

## MORENO VALLEY COLLEGE SUSTAINABILITY OPEN HOUSE

### 0 INTRODUCTION

**WELCOME!**

MORENO VALLEY COLLEGE

**SUSTAINABILITY OPEN HOUSE**

Welcome, from Majid Askar, MVC, VP for Business Services

Welcome, from Hussain Agah, RCCD, Associate Vice Chancellor, Facilities Planning & Development

**2021 SUSTAINABILITY AND CLIMATE ACTION PLAN**

**Project Schedule**

**Defining Sustainability**

**Planning & Implementation**

**TODAY WE WILL BE ASK YOU TO CHAT WITH US ABOUT FOUR TOPICS:**

- Energy Use and Decarbonization
- Recycling and Waste Reduction
- Water and Eco-Systems
- Health and Well-being

THESE TOPICS WERE IDENTIFIED AS MOST IMPORTANT BY YOUR PEERS.

**WE WILL SWITCH TOPICS AFTER 10 MINS!**

**PLANT SOMETHING**  
REDUCE VEHICLE EMISSIONS  
SWITCH IT OUT

### 1 DECARBONIZATION AND CLIMATE JUSTICE

**Energy Use, Decarbonization and Climate Justice** 15 MINS

Not being frugal, being emp. conscious!

**WHAT BARRIERS KEEP YOU FROM USING A MORE SUSTAINABLE COMMUTING OPTION?**

long distance - 30 miles each way	nobody living in my area	I live more than 40 miles away in a remote area and rapid transit to MVC is not optimal.	Freedom	lack of existing carsharing program for the college
no public transit options	Long distance as well and more of a remote area that I am traveling from.	long commute times with public transportation	IDEA: electric cars / charging inf.	IDEA: collaborate with the city transportation system to provide access to college

**WHAT ARE WAYS THAT YOU AS AN INDIVIDUAL CAN REDUCE THE AMOUNT OF ENERGY YOU USE?**

AC up, heating down	Less TV and computer and more reading.	behavioral changes	Eventually buy an electric vehicle...	turn off unnecessary lights
native plants being used and drought tolerant plants to reduce water usage // Xeriscaping landscaping	smart lighting sensors / daylighting concept	keeping the value in waste / circular thinking aligned with peers. allowed - if we don't need it, we don't need to do it.	drip irrigation / leak detection / automatic shut-off / sensors	Solar parking cover! Dual program.

**DESCRIBE HOW YOU FEEL DECARBONIZATION AND CLIMATE JUSTICE ARE CONNECTED.**

Campus goals sometimes conflict with city council plans (ie: warehouse zoning changes x air quality)	with "green" Project Goals, we need to be clear about what we mean by "green" and what we mean by "Project Goals" and what we mean by "Project Goals" and what we mean by "Project Goals"	<b>JOB AWARENESS / OPPORTUNITIES. ARE THE JOBS THAT SUPPORT THE GOALS AVAILABLE?</b>
--	---	--

### 2 RECYCLING AND WASTE REDUCTION

**Recycling and Waste Reduction** 15 MINS

**WHAT IMPROVEMENTS WOULD YOU MAKE TO MVC'S RECYCLING PROGRAM?**

no plastic straws, forks, knives, etc	composting bins / commercial or campus composting facility	buying materials that include recycling contents	dedicated bins (landfill / recycle / compost)
	reduce food waste (40% waste rate domestically)		Expanding our paperless forms and electronic signatures processes

**WHAT WAYS CAN YOU BE MORE INTENTIONAL ABOUT REDUCING THE AMOUNT OF WASTE ON CAMPUS?**

paperless courses	green the curriculum ....	purchase green products from office supply (RCCD won the Office Depot's 2020 Green Award)	Expanding our paperless forms and electronic signatures processes
-------------------	---------------------------	---	---

**HAVE YOU TAKEN ANY COURSES THAT HAVE ADDRESSED WASTE MANAGEMENT?**

--	--	--	--

### 3 WATER AND ECO-SYSTEMS

**Water and Eco-Systems** 15 MINS

Eco-systems: Upstream and Downstream! Plants/irrigation Animals and non-human access to the site

**HAVE YOU TAKEN ANY COURSES / ENGAGEMENT THAT HAVE ADDRESSED WATER AND ECO-SYSTEMS?**

pesticide mitigation by instead using barn owls for rodent control	TRANSNATIONAL FOOD JUSTICE RESEARCH AND ENVIRONMENTAL JUSTICE // WATER CONSERVATION WITH TARGET CONVERSATION SURVEY CHALLENGES.	AIR: clean air day in October -- students pledged to Clean Air Coalition goals to build awareness around pollution / mitigation.	I may look into introducing "Environmental Economics" course	community service in general (Trash pickup)
label native and other plants and include "fun"/useful facts about each				

**WHAT ARE WAYS THAT YOU AS AN INDIVIDUAL CAN REDUCE THE AMOUNT OF WATER YOU USE?**

we have installed over \$200K in native plant material and drip irrigation in the past 3 years. We are currently using reclaimed water for all exterior landscape.	Turn off the water while brushing your teeth	Recently installed touchless bottle fillers to reduce the amount of bottles in the landfill at every building from a sanitary product (plastic)	water saving shower heads at your home	leak detection
water closet flushing and GPM analysis	drip irrigation in place of sprinklers - // still areas that could be improved (strip industry also still seeing innovation)	bottles provided by institution to encourage use of bottle-fillers.		

**WHAT SHOULD MVC DO TO REDUCE THE AMOUNT OF WATER USED?**

update district and campus standards that specify low water consumption fixtures	repair water sprinkler damage if any		
--	--------------------------------------	--	--

### 4 HEALTH AND WELL-BEING

**Health and Well-being** 15 MINS

Playful space! Active space! Connection to nature and mental health impacts

**WHAT ARE WAYS THAT YOU DE-STRESS ON CAMPUS TODAY? WHAT ARE IDEAS TO IMPROVE?**

trail	Take a walk or meditate	SAS(caliber) natural light / seating area north of SAS	biological garden	Walking route example: trail connected to campus // hill behind campus x views
idea: more benches to sit around the campus.	idea: develop Native garden in front of library and Student Services // remove turf	community garden where users can work // healthy food options	tent shades and more shaded seating areas (TREES) / solar tables /	outdoor classrooms desired - some faculty have had experience // wants to open differently when outdoors

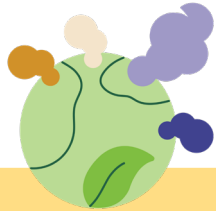
**WHAT ACTIVE SPACES DO YOU USE ON CAMPUS TO FEEL PHYSICALLY WELL?**

A gym / exercise stations	Outdoor exercise stations?	parcourse fitness trail	informational signage around the campus	Executive Golf Course
sports and fitness club	FORMALIZE HILL CLIMB WITH SAFETY ACCESS FOR ALL IN ARMED // THIS IS ALREADY A PATH DESERVED BY STUDENTS	COW PATH EXISTING TO SAS // PAVE AND ENCOURAGE THIS ROUTE ALREADY BEING FIRMED UP!		

**ARE THERE PLACES ON CAMPUS THAT YOU FIND 'COMFORTABLE'? WHAT MAKES THEM FEEL COMFY?**

places with greens that attract insect, birds	Golf Driving Range			
---	--------------------	--	--	--

# OPEN HOUSE Takeaways



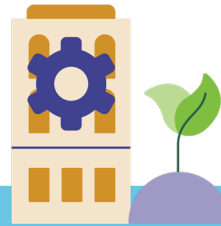
## DECARBONIZATION AND CLIMATE JUSTICE

- Public transportation is lacking or inconvenient;
- Biking can be dangerous
- Energy Efficiency within campus buildings and systems
- Provide Solar Cover and EV charging stations
- Human behavior changes impact energy use



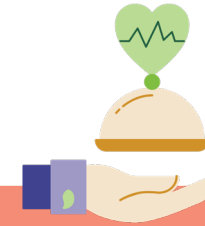
## RECYCLING AND WASTE REDUCTION

- Create a consistent recycling program
- Focus on reduction – paperless courses, less dining packaging, etc.
- Composting
- Trust in the system!



## WATER AND ECO-SYSTEMS

- Building Plumbing Systems
- Native and Drought Tolerant Planting = Less Irrigation
- Eat less meat
- Invest in recycled water infrastructure



## HEALTH AND WELL-BEING

- Formalize pathways and trails on-campus
- Use gardens on campus to promote learning, healthy eating, socializing, rejuvenation, etc.
- Social Equity and Inclusion are key links into our planning



## RESILIENCY

- Addressed in all VALUES
- Support policies and partnerships that advocate for community health
- Continue to be a resource to the community (housing, food, etc.)
- What is the cost of inaction?

# What is next for us?

Nov - Dec

Board Check in

Nov - Jan

Prioritization and Goals

Feb - April

Action Plan and Implementation

## UPCOMING MEETINGS

**DSPC**  
December 10, 2021

**CHANCELLOR'S CABINET**  
December 20, 2021

**BOARD COMMITTEE**  
January 4, 2022

PLUS... **FPDC** and **DBAC**

## TASKS

**Finalizing College Profiles**

**Establishing Benchmarks**

**Setting Goals – short-term  
and long-term**  
Where, When

**Dashboard Development  
(IEMP and TCO)**

## TASKS

**Action Planning**  
Who, What, How

**Monitoring**

**Dashboard Development  
(IEMP and TCO)**

**First Read – April 2022**

# THANK YOU!

