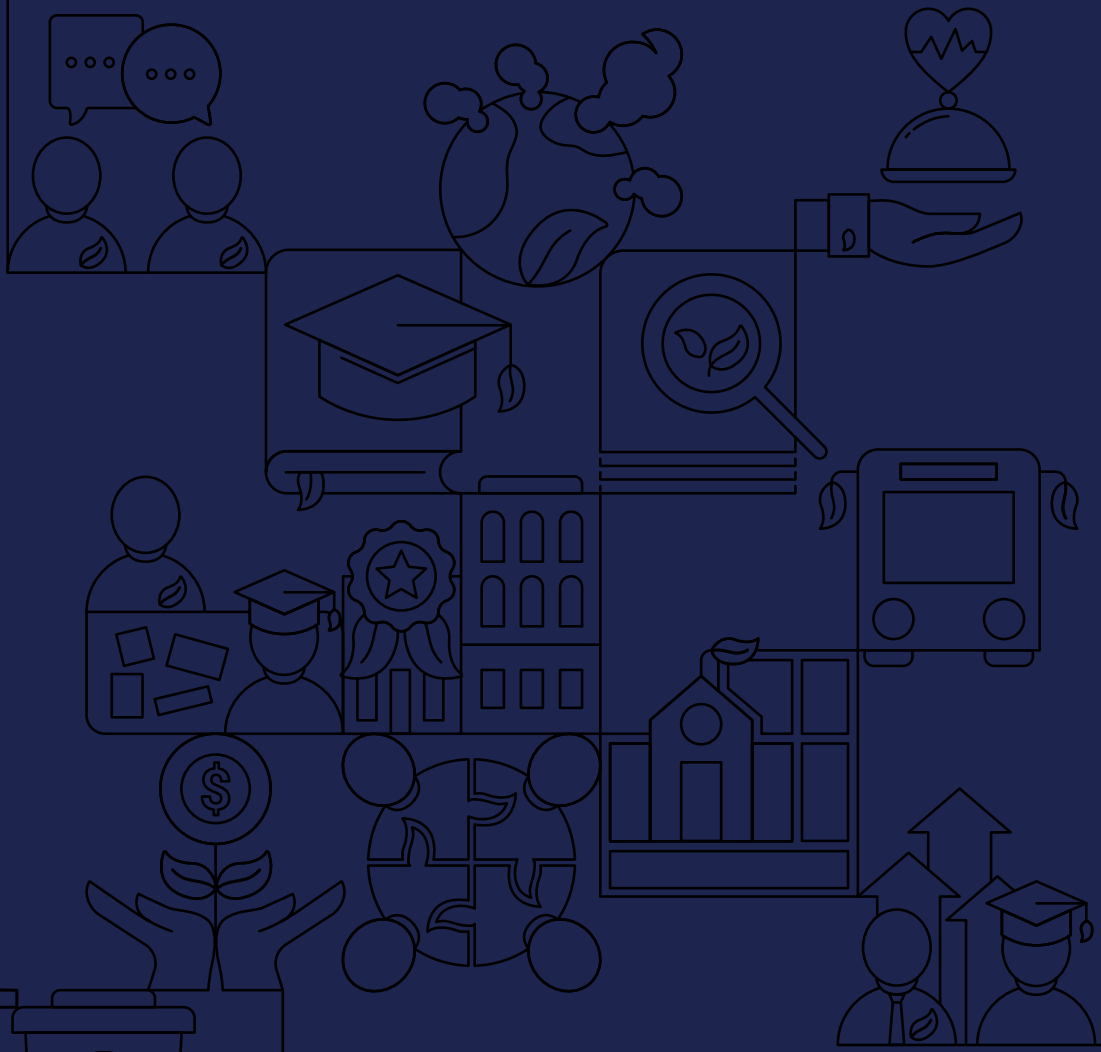


2021

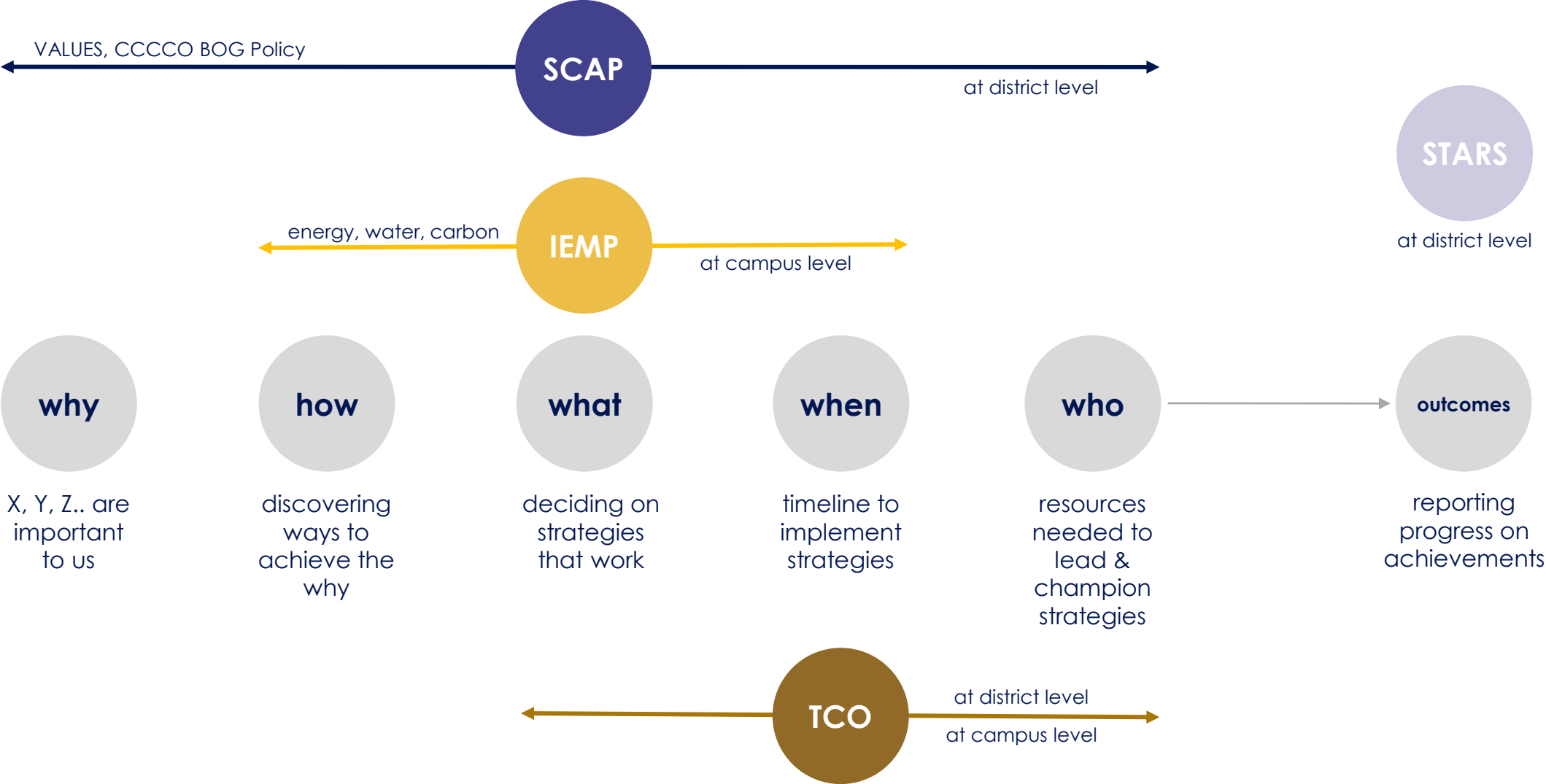
**SUSTAINABILITY
AND CLIMATE
ACTION PLAN**



One goal of the Sustainability and Climate Action Plan is to identify ways for **environmental, social and financial sustainability** to be fostered at each campus in the district.



Deliverables



VALUES, CCCCCO BOG Policy

SCAP

at district level

energy, water, carbon

IEMP

at campus level

STARS

at district level

why

X, Y, Z.. are important to us

how

discovering ways to achieve the why

what

deciding on strategies that work

when

timeline to implement strategies

who

resources needed to lead & champion strategies

outcomes

reporting progress on achievements

TCO

at district level

at campus level

Our Project Schedule

	2021						2022						Project Complete May 31, 2023
	Jun.	Jul.	Aug.	Sep.	Oct.	Nov.	Dec.	Jan.	Feb.	Mar.	Apr.	May	Jun.
TASKS	TASK 1: Project Initiation			TASK 2: Research and Analysis			TASK 3: Implementation Phase						TASK 4: Verification and Monitoring
SCAP	Project Initiation			VALUES and Vision		Prioritization and Goals		Action Plan and Implementation			Final Plan		
IEMP				Campus Building Profiles	Energy Audits	Recommend ECMs			ECMs Finalized	Dashboard	Draft Plan	Final Plan	Final Approvals
TCO				Identify Assets	Classify Assets	Decision Criteria	Funding Analysis		Costing Assets	Asset Decisions		Comprehensive Asset Plan	Final Approvals
STARS													
Committee Workshop			Kick-Off Meeting	VALUES	Listening / Deep-Dives	Baselines		Goal Setting		Action Plan	Draft Plan	Final Plan	Final Approvals
Campus Work			President's Kick-off	VALUES	Open Houses	Campus Updates	-	-	College Action Plan		Draft Plan		Final Approvals
Deliverable Due													

We are here.

Tracking Our Progress

PHASE 01: VISIONING AND VALUES

September - October

- ~~✓ Lead Sustainability VALUES Workshop~~
- ~~✓ Host listening tours, focus groups and open forums with campus community~~
- ~~✓ Benchmark Energy Data for all campuses~~
- ✓ Create Campus Building Profiles

PHASE 02: PRIORITIES AND GOALS

November - January

- ✓ Synthesize the top VALUES for the District
- ✓ Establish priorities and discuss goals for short, mid and long-term
- ✓ Develop cost models around goals

PHASE 03: ACTION PLAN AND IMPLEMENTATION

February - April

- ✓ Document long-term vision and goals
- ✓ Identify short-term, mid-term and long-term initiatives to meet district goals.
- ✓ Develop total cost of ownership cost models for each goal, including personnel needed
- ✓ Present Draft Of Deliverables

PHASE 04: FINAL PLAN AND APPROVALS

May - June

- ✓ Final presentation adoption and approval
- ✓ Establish training needs for key district personnel
- ✓ Visualize Monitoring Dashboard of the Plans
- ✓ Fine tune and update the dashboard

Integrated Energy Master Plan

- a long-term strategy of achieving significant reductions in energy, water, greenhouse gas emissions.



Discovery

Data Points

- ✓ Electricity Bills
- ✓ Gas Bills
- ✓ Water Bills
- ✓ Facility Manager Interviews
- ✓ Site Walkthrough

Data Gaps

- Meter Assignments
- Facility Manager Verification

Total Cost of Ownership

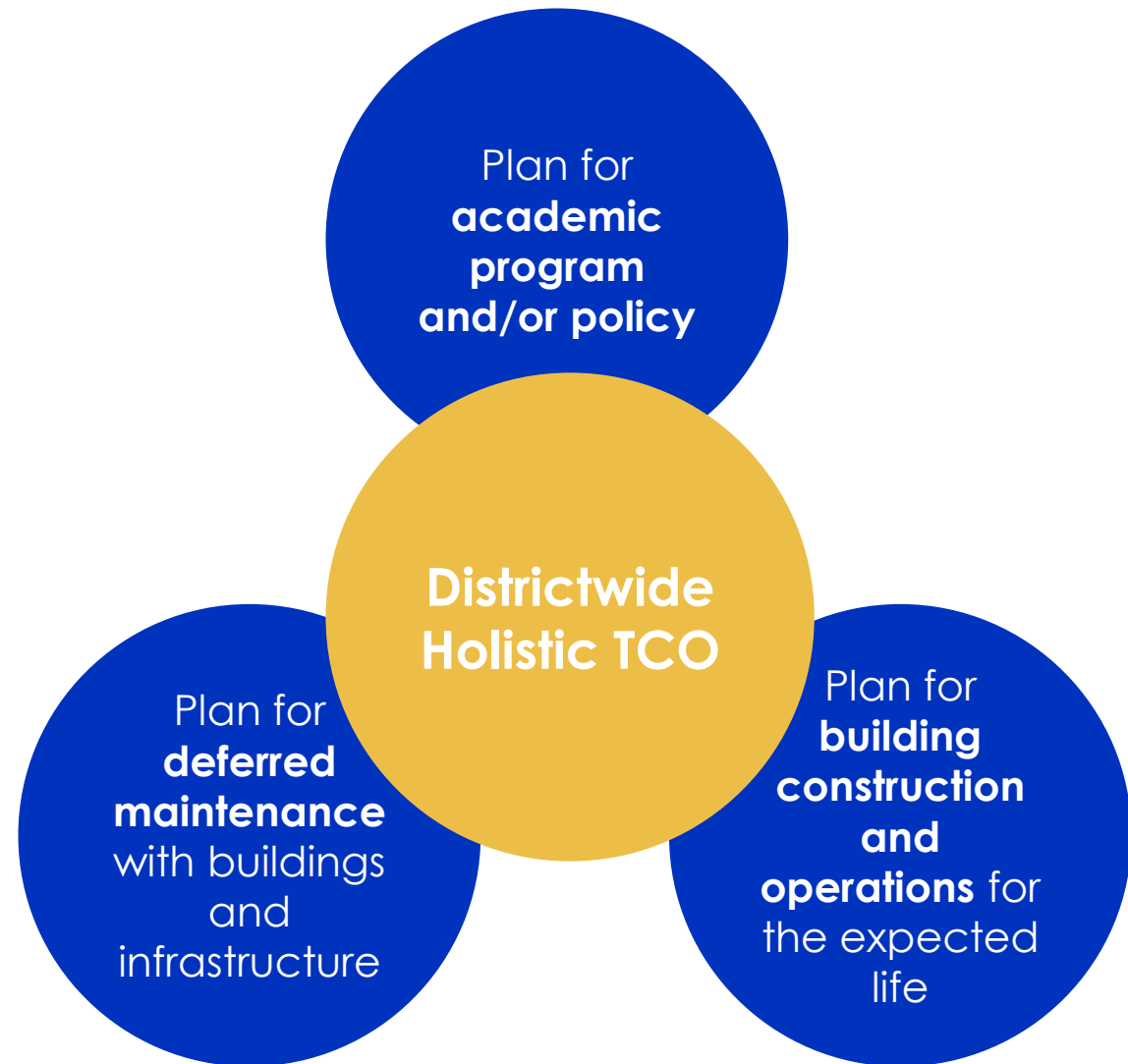
Initial Cost

+

Operational Cost

(including human resources
and technology needed)

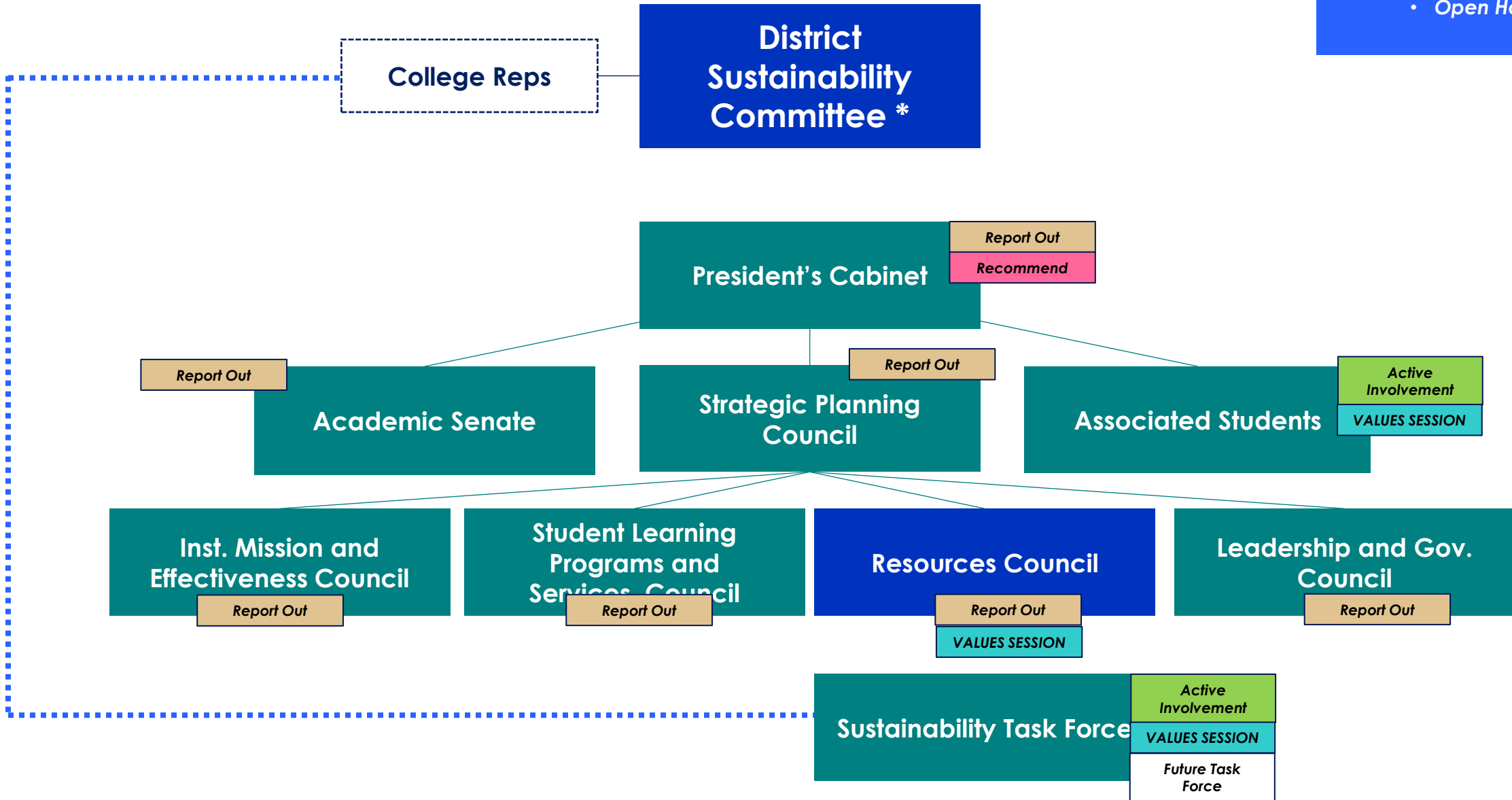
**TCO is a requirement for
Accreditation as well as
Bond Measures**



Moreno Valley College: Engagement Structure

Other Outreach and Engagement:

- Open Houses



Moreno Valley College: Engagement to Date

KICK-OFF

KICK-OFF MEETINGS

President's Cabinet
September 1, 2021

Campus Site Visits
September 13, 2021

WORKSHOP 01

VALUES WORKSHOPS

Associated Students
September 20, 2021

Resources Council
September 9, 2021

WORKSHOP 02

OPEN HOUSE

**Open to all Students,
Faculty, and Staff**
October 19, 2021

WORKSHOP 03

REPORT BACK AND BENCHMARKING

Resources Council
November 18, 2021

President's Cabinet
December 1, 2021

**Sustainability Task
Force***
November 29, 2021

** 60-min workshop*

WORKSHOP 01: VALUES



Decarbonization:
Transportation
Multi-Modal
Transportation
Walkability and Safety

ACCESS + MOBILITY

How can your project advocate and celebrate transit-oriented design, connections between transit hubs, and walkable communities?



Community Access
Community Partnerships
Neighborhood Vitality
Transparency:
Decision-Making

COMMUNITY CONNECTOR

How can your project support its surrounding community, build community partnerships, and connect residents to shared resources?



Beauty & Inspiration
Historical Context of Place
Inclusion
Individual vs. Collective
Placemaking
Multi-Cultural Relevance
Organizational Transformation

CULTURE + IDENTITY

How can your project celebrate its history and cultural context to develop a strong sense of place that speaks to the identities of occupants and surrounding communities?



Building Ecology
Decarbonization:
Sequestration
Ecosystem Services
Public Space
Site Ecology

OUTDOOR ENVIRONMENTAL QUALITY

How can your project's outdoor spaces restore ecology, build community, and create a strong sense of place?



Climate Justice
Economic Development
Programming
Equitable Development
Siting
Equity
Land Use
Social Justice

EQUITABLE DEVELOPMENT


How can your project promote affordability, provide access to opportunity, and advocate for those in need?



Active Spaces
Biophilia
Evidence-Based
Modalities
Hearthment
Play

HEALTH + WELL-BEING

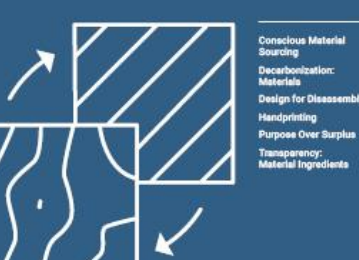
How can intentional design features actively promote users' emotional and physical well-being and encourage them to make healthier choices?



Acoustic Comfort
Air Quality
Thermal Comfort
Visual Comfort

INDOOR ENVIRONMENTAL QUALITY

How can your project support user comfort and productivity?



Conscious Material Sourcing
Decarbonization:
Materials
Design for Disassembly
Handprinting
Purpose Over Surplus
Transparency:
Material Ingredients

MATERIALS IMPACT

How do your materials choices support healthy ecology, communities, and economies?



Building Systems Selection
Decarbonization: Energy Generation
Energy Cost Reduction
Energy Need Reduction

ENERGY

How can changes in energy infrastructure support your broader mission, reduce costs, and build a healthier planet?



Building Resiliency
Community Resiliency
Economic Resiliency
Emergency Planning
Emotional Resiliency
Risk Adaptation & Mitigation

RESILIENCY


How can your project help its users and community adapt to and recover from unexpected situations?



Conscious Cleaning & Upkeep Goods & Supplies
Operational Optimization
Regulatory Partnerships
Safety & Security
Transparency: Building Performance
Waste

PROCUREMENT + OPERATIONS

How can procurement, building operations, and management practices support your broader project goals?



(Storm) Water Management
Hydrological Balance
Potable Water Quality
Water Context of Place
Water Self-Sufficiency

WATER

What connections to water are important to your users and neighboring communities?

WORKSHOP 01: MVC Top VALUES

Moreno Valley College

CAMPUS THAT SUPPORTS INDIVIDUALITY

LEADS TO

OPERATIONAL OPTIMIZATION
How can your project optimize energy use and reduce operational carbon consumption?

ENERGY COST REDUCTION
How can your project reduce energy costs and operational carbon consumption?

DECARBONIZATION: ENERGY
Where is your project sourcing its energy from? How can your project replace fossil fuels with low to no-carbon energy sources?

DECARBONIZATION: TRANSPORTATION
How can your project reduce transportation-related emissions and transition away from fossil fuels?

DECARBONIZATION: MATERIALS
How can material selection reduce embodied carbon and operational carbon consumption to mitigate global warming?

WASTE
How can your project reduce waste and operational carbon consumption?

DECARBONIZATION: SEQUESTRATION
How can the outdoor landscape help sequester carbon and improve your site's outdoor environment?

DECARBONIZATION

LEADS TO

AIR QUALITY
How can your project improve air quality and reduce operational carbon consumption?

ECOSYSTEM SERVICES
How can your project improve ecosystem services and reduce operational carbon consumption?

BIOPHILIA
How can your project incorporate patterns and influences from nature into the design of the built environment? What natural experiences do user groups value and how can it support occupant health and performance?

BUILDING ECOLOGY
How can intentional design choices at the building level, such as dark sky lighting and avian-friendly design, promote ecosystem health?

WORK WITH AND IN NATURE

BUILDING RESILIENCY
What intentional design features in a facility can help respond to and support the primary functions for users during and after an unexpected event?

OUTDOOR ENVIRONMENTAL QUALITY
How can your project's outdoor spaces restore ecology, build community, and create a strong sense of place?

LEADS TO

MULTI-CULTURAL RELEVANCE
How can your project address the needs, values, needs, and interests of the diverse and changing population? How can it support health and well-being for all users and contribute to the community's resilience and vitality?

INDIVIDUAL FULFILLMENT
How can your project support the ability of all users to engage in their work, learning, and leisure activities and the quality of their lives? How can it support the well-being of all users and contribute to the community's resilience and vitality?

INCLUSION
How does your project look beyond its base program to provide opportunities for groups that may be marginalized? How can it create a sense of belonging for individuals of all backgrounds and identities?

SUPPORTS

VISUAL COMFORT
How can your project support visual comfort and reduce operational carbon consumption?

AIR QUALITY
How can your project improve air quality and reduce operational carbon consumption?

CAMPUS THAT SUPPORTS INDIVIDUALITY

OUR PLANNING FRAMEWORK: Organizing the VALUES (Our Why)

Included

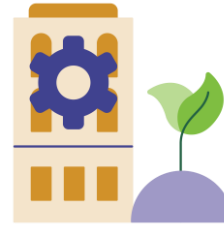
Includes the creation of goals and metrics within the S-CAP



Decarbonization and Climate Justice



Health and Well-being



Eco-systems / Water



Waste / Procurement



Resiliency

Influenced

Would be included in an update with a sustainability lens / new plan



Academics



Engagement



Trust and Transparency

Reinforced

Planning and metrics already exist in other plans



Community Partnerships



Equity and Social Justice


VALUES AND OTHER FRAMEWORKS

Innovation and Leadership (ALL)


Your Top VALUES

CCCCO

AASHE Stars

 Decarbonization, Energy Use, and Climate Justice

 Waste / Procurement

 Water Eco-systems


 Health and Well-being

 Resiliency

 Academics

 Engagement

 Community Partnerships

 Trust and Transparency

 Equity and Social Justice

Operations

Gap

Academics

Engagement

Planning and Administration

Operations

Gap

Academic and Curriculum

Engagement

Planning and Administration

OPEN HOUSE Takeaways



DECARBONIZATION AND CLIMATE JUSTICE

- Public transportation is lacking or inconvenient;
- Biking can be dangerous
- Energy Efficiency within campus buildings and systems
- Provide Solar Cover and EV charging stations
- Human behavior changes impact energy use



RECYCLING AND WASTE REDUCTION

- Create a consistent recycling program
- Focus on reduction – paperless courses, less dining packaging, etc.
- Composting
- Trust in the system!



WATER AND ECO-SYSTEMS

- Building Plumbing Systems
- Native and Drought Tolerant Planting = Less Irrigation
- Eat less meat
- Invest in recycled water infrastructure



HEALTH AND WELL-BEING

- Formalize pathways and trails on-campus
- Use gardens on campus to promote learning, healthy eating, socializing, rejuvenation, etc.
- Social Equity and Inclusion are key links into our planning



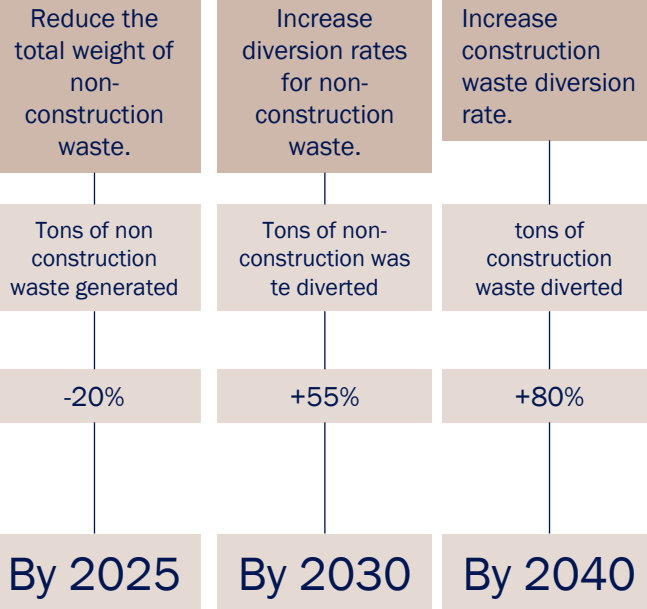
RESILIENCY

- Addressed in all VALUES
- Support policies and partnerships that advocate for community health
- Continue to be a resource to the community (housing, food, etc.)
- What is the cost of inaction?



RECYCLING AND WASTE REDUCTION

Achieve zero waste to landfill.



Five Dimensions of Resiliency

ACTIONS are the initiatives that it will take to get meet your goal / outcome

Actions (per objective)

- ✓ Complete an annual waste audit
- ✓ Implement a campus-wide recycling program paired with educational signage
- ✓ Continue paperless courses
- ✓ Create a district wide supply and furniture swap program
- ✓ Etc.
- ✓ Etc.
- ✓ Etc.

IMPACT AREAS are the top VALUES as created collectively by the District and Colleges.

GOALS AND OUTCOMES establish long-term milestones that the District and Colleges will work toward. These were established by cross-referencing System and Stars frameworks with Impact Areas.

OBJECTIVES outline measurable actions were established by from District and Campus engagement, System mandates, and HiEd best practices.

MEASURES align with the objectives to manage what success will look.

METRICS outline how the objective will be measured based on the data available or data required.

MILESTONES represent the timeline associated with each objective. These outline short-, mid-, and long-term strategies.

RESILIENCY overlays risk-management and the five dimensions of resiliency (Ecosystem, Financial, Human Health, Infrastructure, Social) into each Impact Area

Five Dimensions of Resilience – Adding a Lens of Mitigation

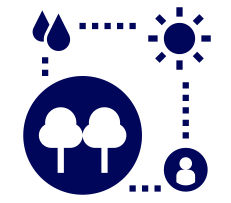
During a disruption (climatic, manmade, or public health), these are the lenses in which we can mitigate loss:

Impact Areas = Identified Milestones of Change as planned in the S-CAP

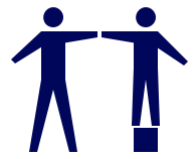
More Comprehensive – getting back to operations during a disruption



Health & Wellness
Basics – food, clean water, etc.



Ecosystem Services
Hazards – such as air quality, drought, etc.



Social Equity & Governance
How do different groups respond to disruption differently?



Infrastructure
Physical Building and Systems Infrastructure plus Transit, Communications, etc.



Economic
How can the College plan for financial disruptions, and/or plan to connect to a larger response for the region.

What is next for us?

Nov - Jan

Prioritization and Goals

TASKS

Finalizing College Profiles

Establishing Benchmarks

**Setting Goals – short-term
and long-term**
Where, When

**Dashboard Development
(IEMP and TCO)**

Feb - April

Action Plan and Implementation

TASKS

Action Planning
Who, What, How

Monitoring

**Dashboard Development
(IEMP and TCO)**

First Read – April 2022

THANK YOU!

