

---

# Meeting Minutes

---



Architecture Engineering Planning Interiors

1650 Spruce Street, Suite 300  
Riverside, CA 92507

Meeting Date	09.20.2021
To	Hussain Agah, Mehran Mohtasham, Myra Nava
From	DLR Group
Location	via ZOOM
Project	RCCD: Sustainability and Climate Action Plan
Project No.	N/A
Attendees	Shona O'Dea, Prem Sundharam, Chris Flynn, Mehran Mohtasham, Hussain Agah, MVC Associated Students
Purpose	MVC: Associate Students of MVC VALUES Session

---

## Agenda:

- **MVC Business (10 min)**
- **Welcome: Introduction of the project (10 min)**
- **Activity: Prioritize your VALUES (45 mins)**
  - *What does each group value?*
  - *What themes matter most?*
  - VALUES SHARE: 4 min

Link to Mural for Activity for Viewing only:


<https://app.mural.co/t/firstworkspace3639/m/firstworkspace3639/1631886766036/d36ecf740ced707e35d747c0685c5f5e7172f879?sender=psundharam9837>

## Minutes:

- Welcome (**See attached slides**, 1-10)
  - All meetings will be recorded, and minutes posted for anyone unable to attend sessions.
  - DLR Group provided a brief overview the Integrated Planning Process, how the deliverables of this project will speak to other plans such as the District Strategic Plan, College's Strategic Plan, etc.
  - DLR Group described the deliverables of this project and denoted this process will have a lot of terminology we will review.
  - DLR Group introduced stamp features of Zoom to allow attendees to participate and engage in the VALUES activity.
  
- Activity (**See Notes from each breakout group**)
  - Attendees learned more about the VALUES topics and prioritized VALUES where Associated Students of MVC believes the district priorities around Sustainability and Climate Action should be invested.
  - STEP 1: We reviewed all 12 VALUES topics and stamped a heart of a card resonated with them and a question mark if they wanted more information.

25 MINS

GROUP 1

As we talk through each card, stamp any card with an  if you would to learn more about this topic either during discussion or future sessions.

**STEP ONE: USE YOUR GUT! - 1 MINUTE EACH!** 

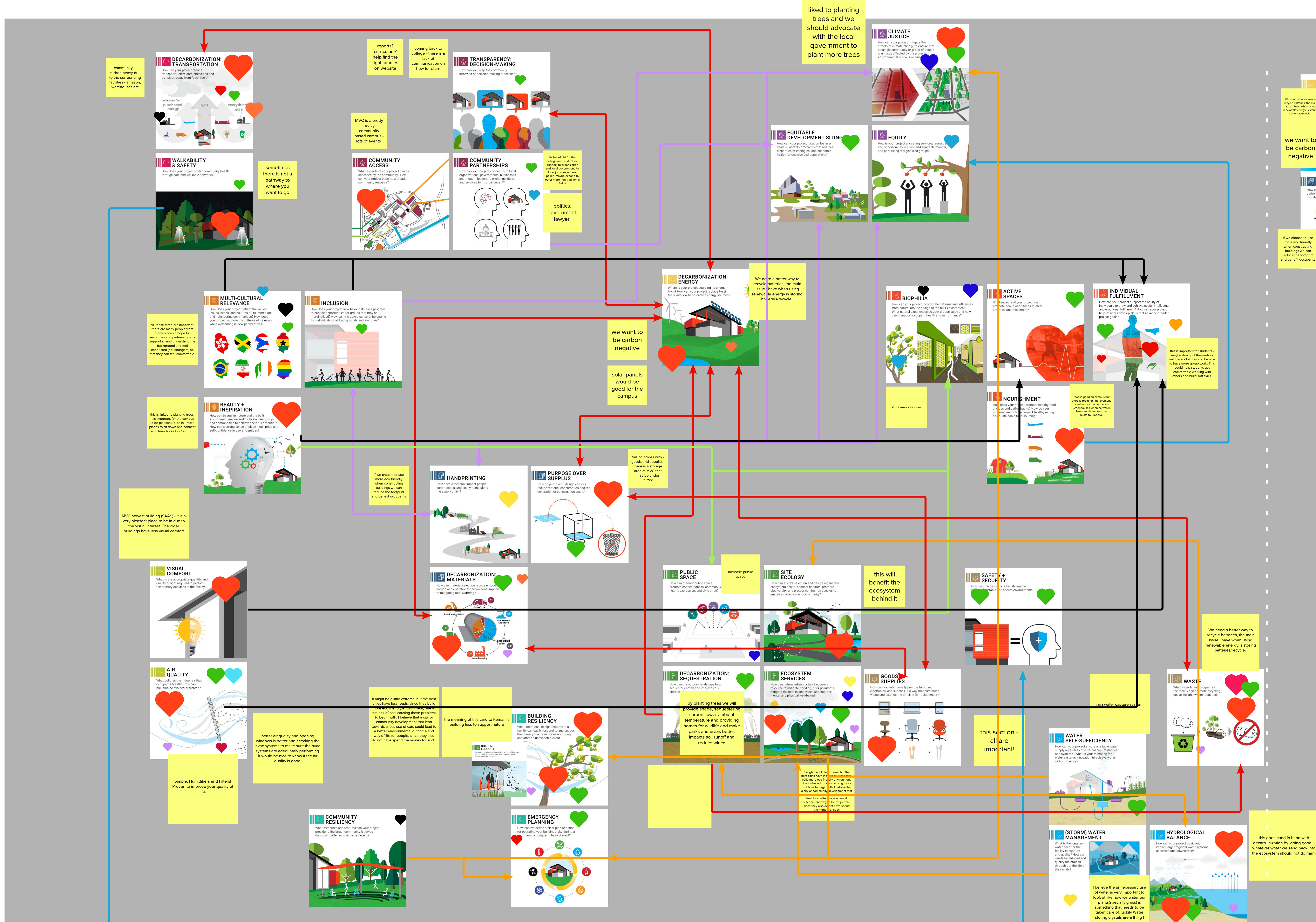
As we talk through each card, stamp any card with an  that you believe is important enough to the campus to warrant additional discussion.

The grid contains 100 cards, each representing a different sustainability value. Each card includes a title, a brief description, and a small icon. The cards are arranged in a grid that is approximately 10 columns wide and 10 rows high. Some cards have a question mark icon (representing a topic to learn more about) or a heart icon (representing a topic considered important enough for discussion) stamped on them. The values represented include:

- ACCESS + MOBILITY
- COMMUNITY CONNECTOR
- CULTURE + IDENTITY
- ENERGY
- WATER
- PROCUREMENT + OPERATIONS
- EQUITABLE DEVELOPMENT
- HEALTH + WELL-BEING
- INDOOR ENVIRONMENTAL QUALITY
- MATERIALS IMPACT
- RESILIENCY
- OUTDOOR ENVIRONMENTAL QUALITY
- DECARBONIZATION TRANSPORTATION
- WALKABILITY
- NEIGHBORHOOD VITALITY
- TRANSPARENCY-DECISION-MAKING
- ORGANIZATIONAL TRANSFORMATION
- MULTI-CULTURAL RELEVANCE
- INCLUSION
- ENERGY
- BUILDING SYSTEMS SELECTION
- ENERGY NEED REDUCTION
- MULTI-MODAL TRANSPORTATION
- COMMUNITY ACCESS
- COMMUNITY PARTNERSHIPS
- BEAUTY + INSPIRATION
- HISTORICAL CONTEXT OF PLACE
- INDIVIDUAL VS. COLLECTIVE PLACEMAKING
- DECARBONIZATION ENERGY
- ENERGY COST REDUCTION
- EQUITABLE DEVELOPMENT
- SOCIAL JUSTICE
- LAND USE
- CLIMATE JUSTICE
- HEALTH + WELL-BEING
- EVIDENCE-BASED MODALITIES
- NOURISHMENT
- PLAY
- INDOOR ENVIRONMENTAL QUALITY
- THERMAL COMFORT
- VISUAL COMFORT
- MATERIALS IMPACT
- DESIGN FOR DISASSEMBLY
- HANDPRINTING
- PURPOSE OVER SURPLUS
- ECONOMIC DEVELOPMENT PROGRAMMING
- EQUITABLE DEVELOPMENT SITING
- EQUITY
- BIOPHILIA
- ACTIVE SPACES
- INDIVIDUAL FULFILLMENT
- ACUSTIC COMFORT
- AIR QUALITY
- TRANSPARENCY: MATERIAL INGREDIENTS
- DECARBONIZATION MATERIALS
- CONSCIOUS SOURCING
- OUTDOOR ENVIRONMENTAL QUALITY
- PUBLIC SPACE
- SITE ECOLOGY
- PROCUREMENT + OPERATIONS
- SAFETY + SECURITY
- CONSCIOUS CLEANING + UPKEEP
- TRANSPARENCY: BUILDING PERFORMANCE
- RESILIENCY
- RISK ADAPTION + MITIGATION
- EMOTIONAL RESILIENCY
- BUILDING RESILIENCY
- WATER
- WATER SELF-SUFFICIENCY
- WATER CONTEXT OF PLACE
- BUILDING ECOLOGY
- DECARBONIZATION: SEQUESTRATION
- ECOSYSTEM SERVICES
- GOODS + SUPPLIES
- OPERATIONAL OPTIMIZATION
- REGULATORY PARTNERSHIPS
- WASTE
- COMMUNITY RESILIENCY
- ECONOMIC RESILIENCY
- EMERGENCY PLANNING
- STORM WATER MANAGEMENT
- HYDROLOGICAL BALANCE
- POTABLE WATER QUALITY

- STEP 2: The group discussed the cards that resonated the most with the group. Decarbonization resonated with many as a central theme and the group later connected that to Climate Justice. On the social and emotional aspects, inclusion, multi-cultural relevance and individual fulfillment resonated collectively. The group kept making further connections between different priorities. (See connections between topics)

**STEP TWO: DISCUSS** Using the cards that resonated with the group in this step we will spend time prioritizing. Now imagine you were investing budget in 6 goals that would connect Sustainability to User Experience. Which **VALUE** would have the most impact for your investment?



- Group then identified top VALUES as listed below.
  - Decarbonization
  - Outdoor environmental and ecosystems
  - Building resiliency
  - Individual fulfillment
  - Tree planting
- Next steps: DLR Group thanked the students and discussed that the collection of all ideas such as this will allow the district to find the college level and district level VALUES, which will be communicated back to the students.

# TOP 6 CARDS

SHARE  
2 MINS

**DECARBONIZATION: ENERGY**  
How can your project maximize its energy efficiency? Can your project replace fossil fuels with renewable energy sources?

**DECARBONIZATION: TRANSPORTATION**  
How can your project reduce transportation-related emissions and transition away from fossil fuels?

community is carbon heavy due to the surrounding facilities - amazon, warehouses etc.

we need a better way to recycle batteries, the most toxic waste stream in the waste stream. How can we use them in a way that reduces their carbon footprint?

we want to be carbon negative

solar panels would be good for the campus

emissions from: purchased energy, you, everything else

**Decarbonization**

**tree planting**

**BIOPHILIA**  
How can your project incorporate patterns and influences from nature into the design of the built environment?

**ACTIVE SPACES**  
How can your project encourage and support active lifestyles and improve public health and performance?

**DEARBONIZATION: SEQUESTERATION**  
How can your project reduce embodied carbon and operational carbon consumption to mitigate global warming?

if we choose to use more eco friendly when constructing buildings we can reduce the footprint and benefit occupants

increase public space

by planting trees we will provide shade, sequestering carbon, lower ambient temperatures and providing homes for wildlife and these parks and areas better impacts soil runoff and reduce runoff

**BUILDING ECOLOGY**  
How can your project choose at the building level, such as dark vs light and urban friendly design, positive ecosystem impact?

**BUILDING RESILIENCY**  
How can your project design buildings that can easily respond to and support the primary functions for safety during and after an unexpected event?

the meaning of this card is to focus on building level to support nature

**VISUAL COMFORT**  
How can your project maximize the quality and quantity of light and views in the building?

**AIR QUALITY**  
How can your project maximize the quality of the air that is breathed in the building?

**INDIVIDUAL FULFILLMENT**  
How can your project support the needs of people and their well-being and contribute to their overall quality of life?

**INCLUSION**  
How can your project ensure that all people, regardless of their background, are able to participate in the building's life?

**CULTURAL**  
How can your project honor and celebrate the cultural heritage and identity of the community?

All these three are important there are many people from many places - a hope for resources and partnerships to support all and understand the background and feel connected (not alienated) so that they can feel comfortable

**WATER SELF-SUFFICIENCY**  
How can your project reduce its water consumption and increase its water efficiency?

**BUILDING RESILIENCY**  
How can your project design buildings that can easily respond to and support the primary functions for safety during and after an unexpected event?

**ECOSYSTEM SERVICES**  
How can your project maximize the benefits of ecosystems and the services they provide?

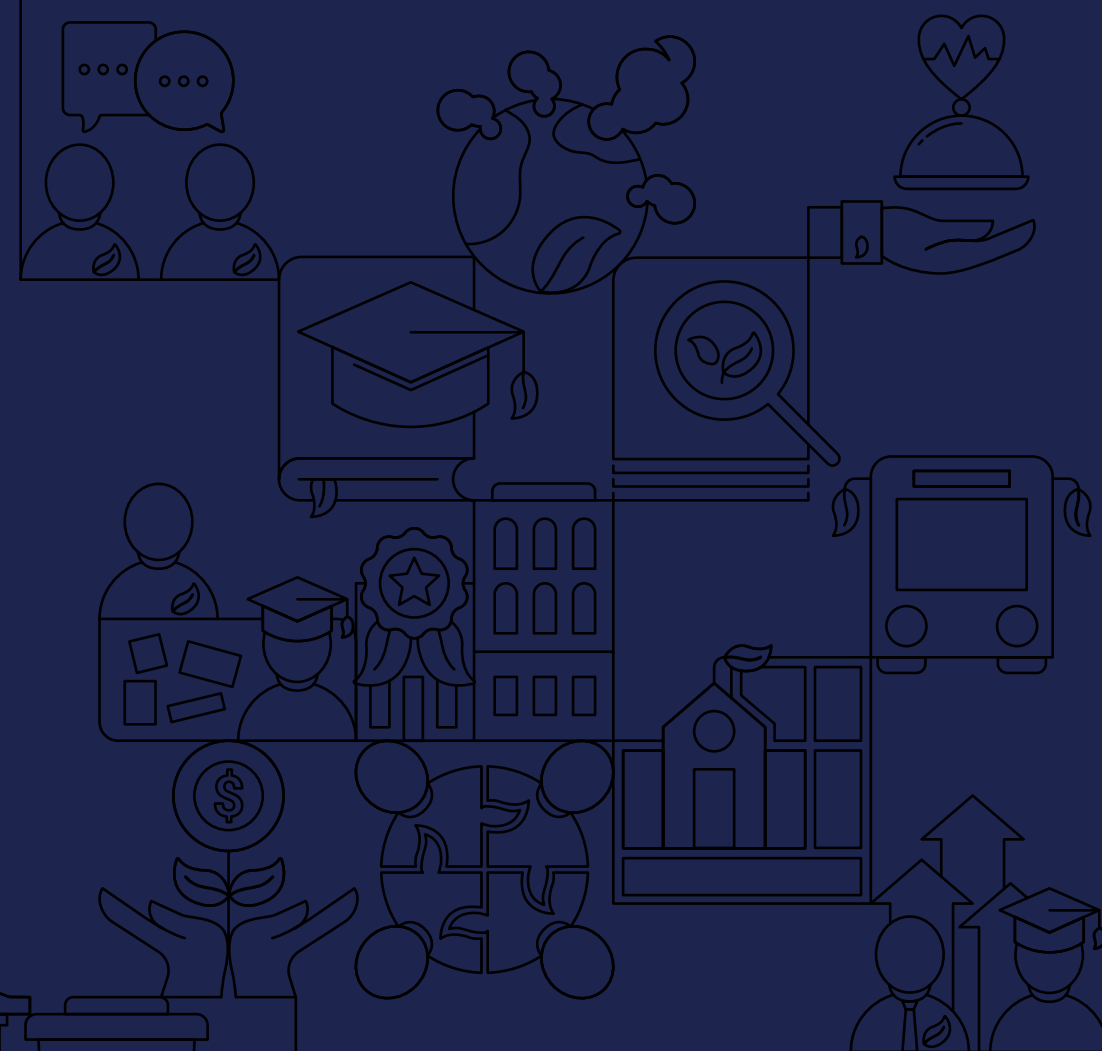
**HYDROLOGICAL BALANCE**  
How can your project maintain the natural water cycle and the health of the ecosystem?

outdoor environment & ecosystems

**VALUE card**

is goes hand in hand with rbzation by 'doing good' - every water we send back into ecosystem should not do harm

# 2021 SUSTAINABILITY AND CLIMATE ACTION PLAN





# Your Team



**Leigh Anne Jones**  
Principal in Charge



**Lindsey Perez**  
Sustainability and Climate  
Action Plan Leader



**Prem Sundharam**  
Total Cost of Ownership  
Leader



**Chris Lawrence**  
Project Manager



**Linsey Graff**  
Engagement/STARS  
Leader

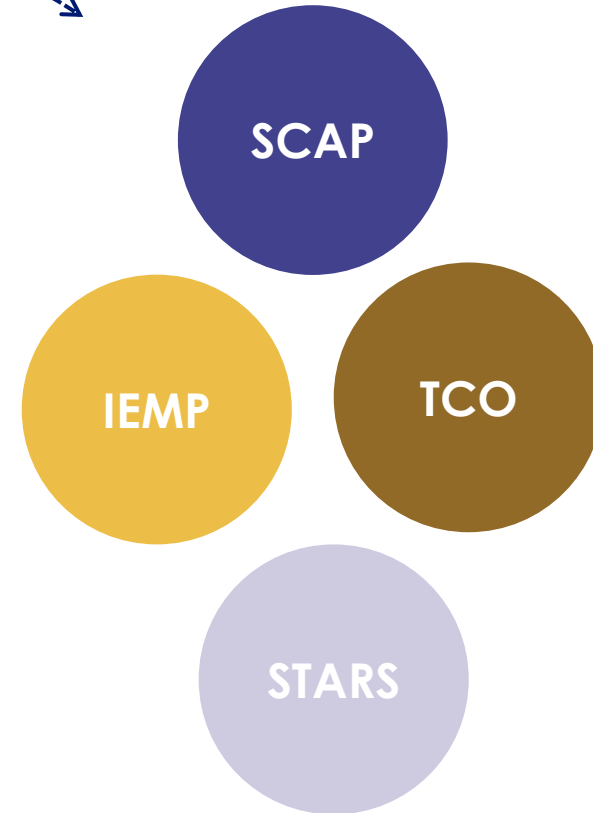


**Shona O'Dea**  
Integrated Energy  
Master Plan Leader

# Integrated Planning Approach

## CONNECTING TO OTHER PLANS:

- District Strategic Plan
- College's Strategic Plan
- College's Educational Master Plan
- College's Facilities Master Plan
- District Five-year Capital Construction Plan
- College's Operational and Maintenance Plan
- Fiscal Plan
- Solar Planning Initiative



# Project Schedule

	2021							2022						Project Complete May 31, 2023
	Jun.	Jul.	Aug.	Sep.	Oct.	Nov.	Dec.	Jan.	Feb.	Mar.	Apr.	May	Jun.	
TASKS	TASK 1: Project Initiation			TASK 2: Research and Analysis				TASK 3: Implementation Phase						TASK 4: Verification and Monitoring
SCAP	Project Initiation			VALUES and Vision		Prioritization and Goals			Action Plan and Implementation			Final Plan		
IEMP				Campus Building Profiles	Energy Audits	Recommend ECMs			ECMs Finalized	Dashboard	Draft Plan	Final Plan	Final Approvals	
TCO				Identify Assets	Classify Assets	Decision Criteria	Funding Analysis		Costing Assets	Asset Decisions		Comprehensive Asset Plan	Final Approvals	
STARS														
Committee Workshop			Kick-Off Meeting	VALUES	Listening / Deep-Dives	Prioritization		Goal Setting		Action Plan	Draft Plan	Final Plan	Final Approvals	
Campus Work			President's Kick-off	VALUES	Open Houses	Campus Priorities	-	-	College Action Plan		Draft Plan		Final Approvals	
Deliverable Due														

We are here.

# Sustainability Committee Members

## District Office

- **Hussain Agah** - Associate Vice Chancellor
- **Mehran Mohtasham** - Director of Capital Planning
- **Bart Doering** - Facilities Development Director
- **Marisa Yeager** - Director, Government Relations
- **Myra Nava** - Classified Representative

## Moreno Valley College

- **Fabian Biancardi** – Professor, Academic Senate
- **Kemari Wofford** – Student Representative, College Students Association
- **Majd Askar** - Interim Vice President, Business Services
- **Ron Kirkpatrick** - Director, Facilities M&O
- **Pending** – Classified Representatives

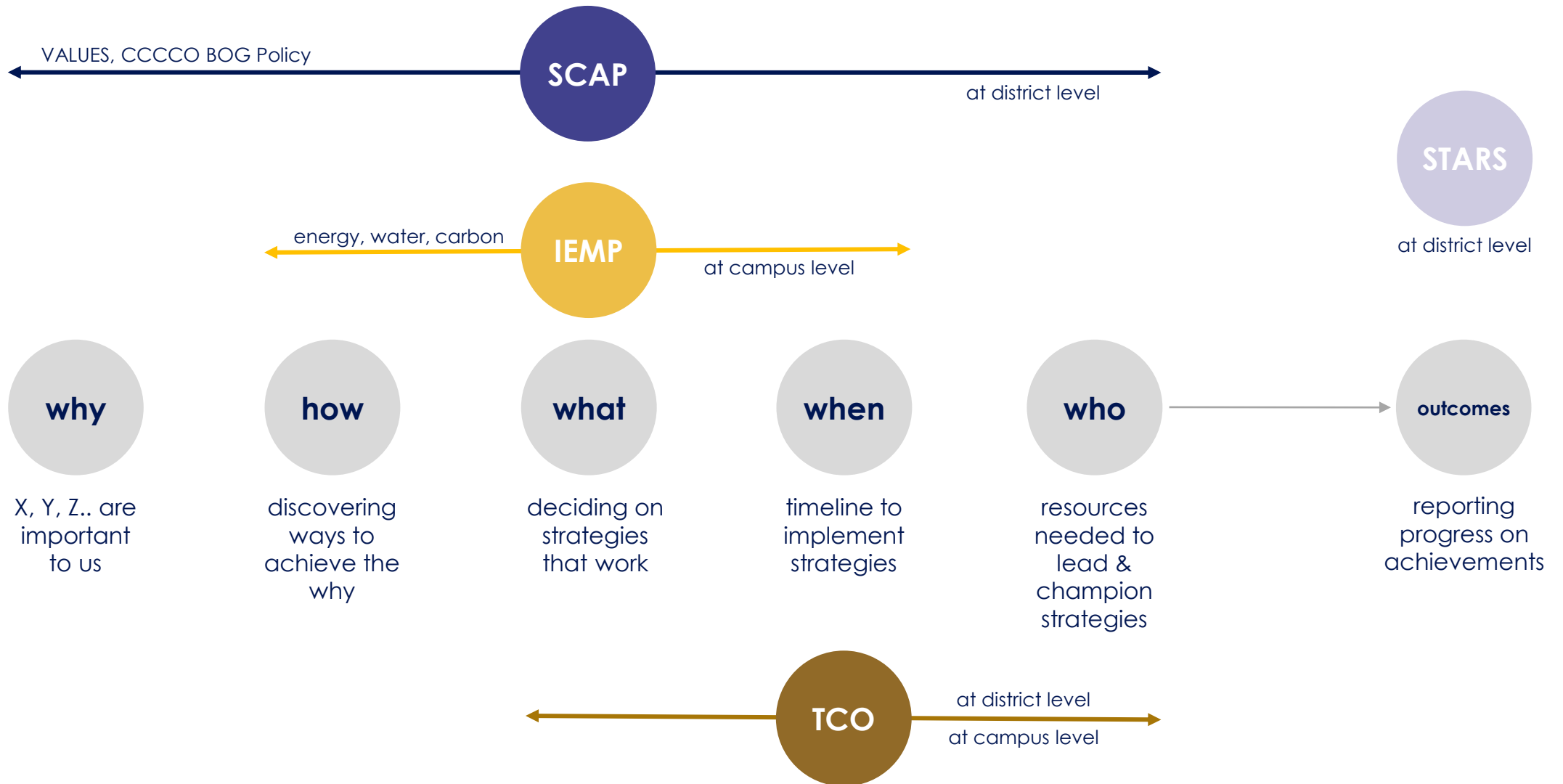
## Norco College

- **Maxwell Murphey** - Associate Faculty, Academic Senate
- **Isaac Nunez** - Student Representative, College Students Association
- **Michael Collins** - Vice President, Business Services, Business Services Office
- **Steven Marshall** - Director, Facilities M&O
- **Andy Aldasoro** - Classified Representative

## Riverside City College

- **Garth Schultz** – Associate Professor, Faculty Association
- **Tonya Huff** – Assistant Professor, Academic Senate
- **Jordyn Villanueva** - Student Representative, College Students Association
- **Albert Jaramillo** – Student Representative, College Students Association (Alternate)
- **Chip West** - Vice President, Business Services, Business Services Office
- **Robert Beebe** - Interim Director, Facilities M&O
- **Peter Lomas** - Classified Representative

# Connections



One goal of the Sustainability and Climate Action Plan is to identify ways for **environmental, social and financial sustainability** to be fostered at each campus in the district.



# Defining Sustainability

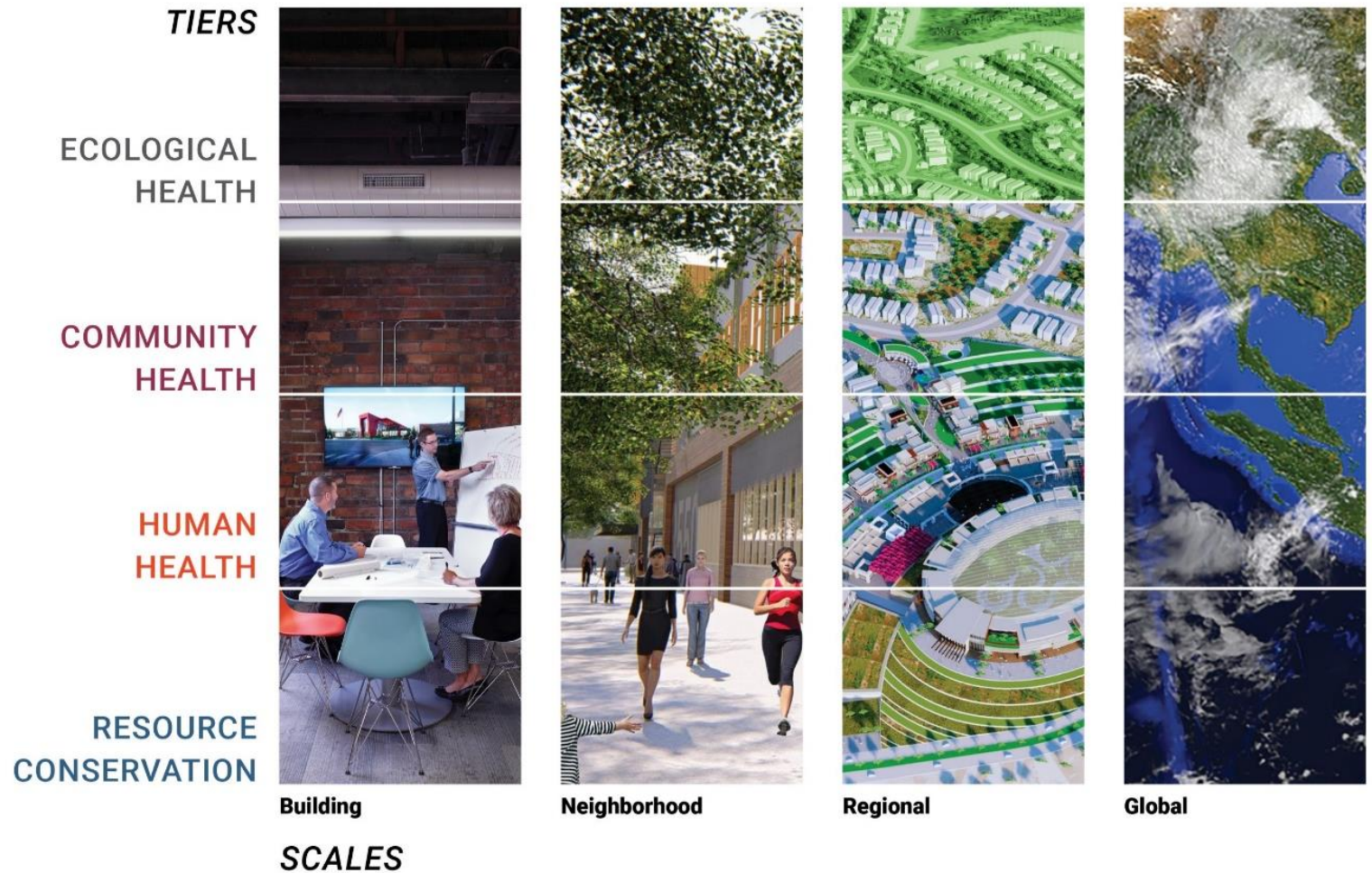
## Planning & Sustainability

Our choices have an impact at all scales.

Our choices impact all categories

Environment is everything around us including us while the ecology describes how all those work.

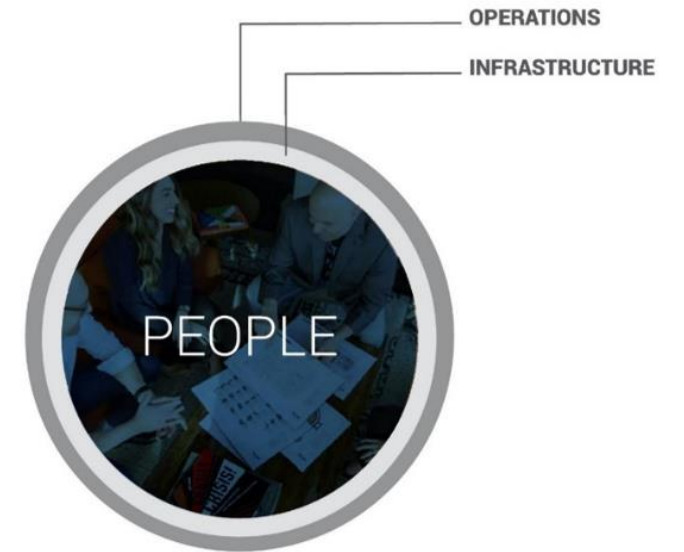
Ecology looks at the interaction between everything.



# User Experience + Performance



## Design Solution



Holistic design thinking maximizes opportunities for optimal design impact on people, operations, and infrastructure.



# Comprehensive Sustainability Language



Decarbonization:  
Transportation  
Multi-Modal  
Transportation  
Walkability and Safety

**ACCESS + MOBILITY**

How can your project advocate and celebrate transit-oriented design, connections between transit hubs, and walkable communities?



Community Access  
Community Partnerships  
Neighborhood Vitality  
Transparency:  
Decision-Making

**COMMUNITY CONNECTOR**

How can your project support its surrounding community, build community partnerships, and connect residents to shared resources?



Beauty & Inspiration  
Historical Context  
of Place  
Inclusion  
Individual vs. Collective  
Placemaking  
Multi-Cultural Relevance  
Organizational  
Transformation

**CULTURE + IDENTITY**

How can your project celebrate its history and cultural context to develop a strong sense of place that speaks to the identities of occupants and surrounding communities?



Building Ecology  
Decarbonization:  
Sequestration  
Ecosystem Services  
Public Space  
Site Ecology

**OUTDOOR ENVIRONMENTAL QUALITY**

How can your project's outdoor spaces restore ecology, build community, and create a strong sense of place?



Climate Justice  
Economic Development  
Programming  
Equitable Development  
Siting  
Equity  
Land Use  
Social Justice

**EQUITABLE DEVELOPMENT**

How can your project promote affordability, provide access to opportunity, and advocate for those in need?



Active Spaces  
Biophilia  
Evidence-Based  
Modalities  
Hearthment  
Play

**HEALTH + WELL-BEING**

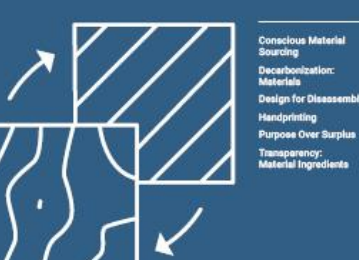
How can intentional design features actively promote users' emotional and physical well-being and encourage them to make healthier choices?



Acoustic Comfort  
Air Quality  
Thermal Comfort  
Visual Comfort

**INDOOR ENVIRONMENTAL QUALITY**

How can your project support user comfort and productivity?



Conscious Material  
Sourcing  
Decarbonization:  
Materials  
Design for Disassembly  
Handprinting  
Purpose Over Surplus  
Transparency:  
Material Ingredients

**MATERIALS IMPACT**

How do your materials choices support healthy ecology, communities, and economies?



Building Systems  
Selection  
Decarbonization: Energy  
Generation  
Energy Cost Reduction  
Energy Need Reduction

**ENERGY**

How can changes in energy infrastructure support your broader mission, reduce costs, and build a healthier planet?



Building Resiliency  
Community Resiliency  
Economic Resiliency  
Emergency Planning  
Emotional Resiliency  
Risk Adaptation & Mitigation

**RESILIENCY**


How can your project help its users and community adapt to and recover from unexpected situations?



Conscious Cleaning  
& Upkeep Goods & Supplies  
Operational Optimization  
Regulatory Partnerships  
Safety & Security  
Transparency: Building  
Performance  
Waste

**PROCUREMENT + OPERATIONS**

How can procurement, building operations, and management practices support your broader project goals?



(Storm) Water  
Management  
Hydrological Balance  
Potable Water Quality  
Water Context of Place  
Water Self-Sufficiency

**WATER**

What connections to water are important to your users and neighboring communities?