
Meeting Minutes



Architecture Engineering Planning Interiors

1650 Spruce Street, Suite 300
Riverside, CA 92507

Meeting Date	09.01.2021
To	Hussain Agah, Mehran Mohtasham, Myra Nava
From	DLR Group
Location	via ZOOM
Project	RCCD: Sustainability and Climate Action Plan
Project No.	N/A
Attendees	Linsey Graft, Shona O'Dea, Chris Lawrence, Monica Green, Kaneesha Tarrant, Dr. Kevin Fleming, Mehran Mohtasham, Samuel Lee, DR. Michael Collins
Purpose	Norco President's Cabinet Kickoff Meeting

Agenda:

- **Project Information (10 minutes)**
 - DLR Group Team Introduction
 - Integrated Planning Approach
 - Schedule / Engagement
 - Overview of Deliverables
- **Activity (10 minutes)**
 - Share some past successes of your committee...
 - What should we be focusing on, or what is most important for us to know?
 - What excites you about this process?
- **Next Steps (5 minutes)**
 - Introduction of the VALUES workshop

Minutes:

Project Information (Slides 1-20):

- DLR Group Team Introduction
- Integrated Planning Approach
- Schedule / Process / Engagement
- Overview of Deliverables

Discussion (Slides 21-22):

- When it comes to your **College's sustainability journey...**
- Share past **successes and challenges...**
 - Challenges implementing the fuel cell. Utility costs have actually increased. Maintenance costs have increased.

Need Best Practices that work.

True TCO and cost benefits utilizing Best Practices.

Limited personnel to manage new MEP systems.

Expenditure control.

Driving down utility costs.

Sustainability efforts to date have been segmented – not looking at the whole sustainability picture as a whole.

No real data on EV charging stations.

How can the College build capital for sustainable projects?

Can we include wind turbines? Can they benefit the campus?

The faculty would like to weave sustainability into curriculum.

What can be done to address horse manure for the community with sustainability?

- What should we be **focusing** on, or what is **most important** for us to know?

Student body that is active in sustainability – recycling program

Meet student expectations for sustainability.

Incorporate best practices into district standards.

Need a real picture of the long-term cost and benefit.

Strategies need to be financially sustainable.

The students should be fully engaged in sustainability year-after-year.

The students should be the driving force, and staff needs to be fully heard.

- What **excites** you about this process?

Next Steps (Slides 23-26):

- Introduction of the VALUES Workshop

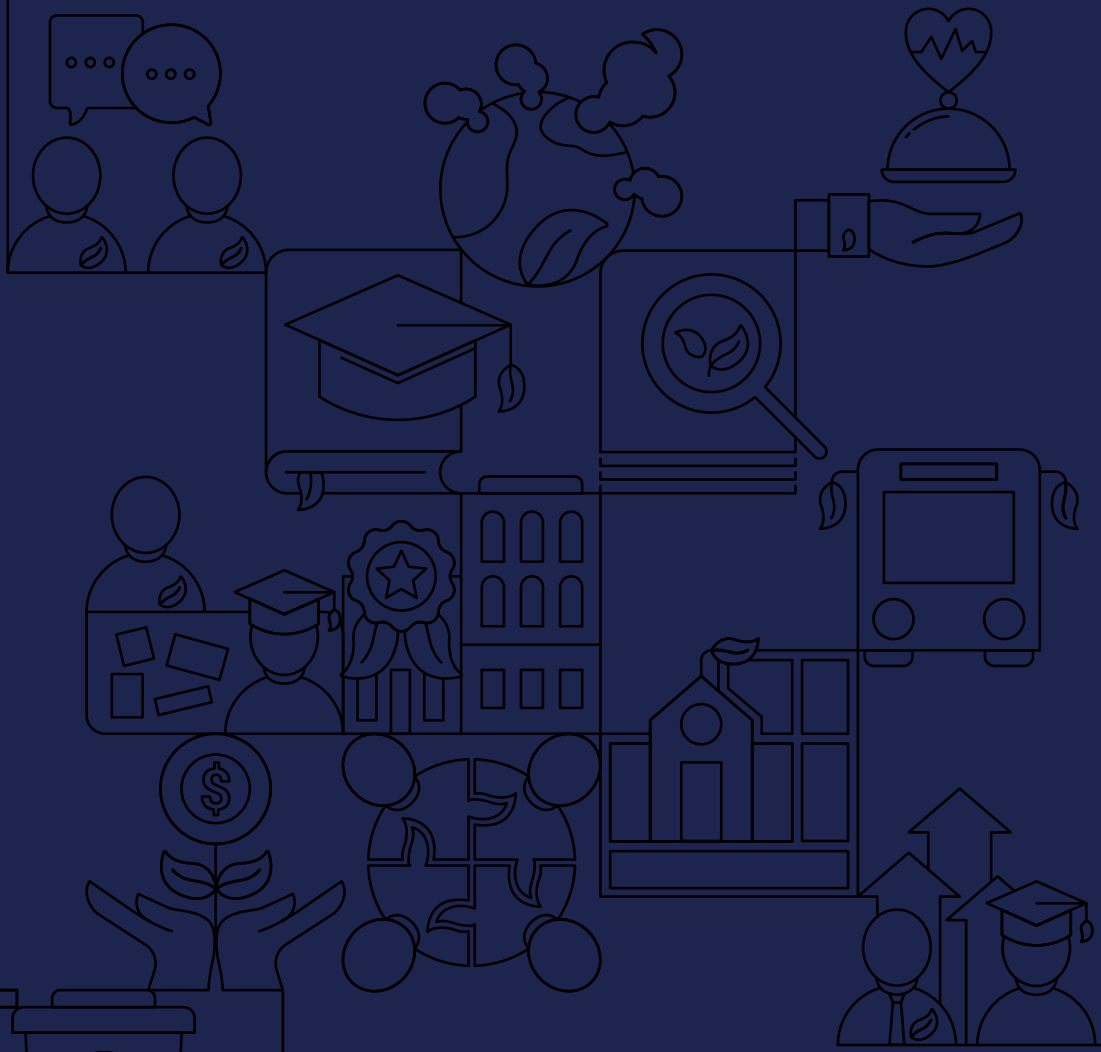
2021

SUSTAINABILITY AND CLIMATE ACTION PLAN

President's Cabinet

Kick-Off Meeting

September 01, 2021



Today's Agenda

Project Information

- DLR Group Team Introduction
- Integrated Planning Approach
- Schedule / Process / Engagement
- Overview of Deliverables

Activity

- Share past successes and challenges...
- What should we be focusing on, or what is most important for us to know?
- What excites you about this process?

Next Steps:

Introduction of the VALUES workshop

01

Project Introduction

Your Team



Leigh Anne Jones
Principal in Charge



Lindsey Perez
Sustainability and Climate
Action Plan Leader



Prem Sundharam
Total Cost of Ownership
Leader



Chris Lawrence
Project Manager



Linsey Graff
Engagement/STARS
Leader



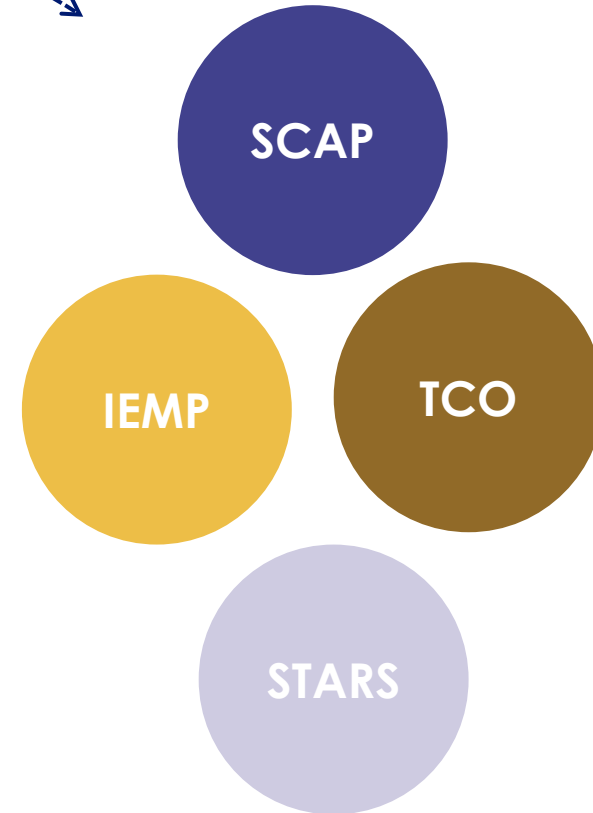
Shona O'Dea
Integrated Energy
Master Plan Leader

Integrated Planning Approach



CONNECTING TO OTHER PLANS:

- District Strategic Plan
- College's Strategic Plan
- College's Educational Master Plan
- College's Facilities Master Plan
- District Five-year Capital Construction Plan
- College's Operational and Maintenance Plan
- Fiscal Plan
- Solar Planning Initiative



Project Schedule



Project Complete
May 31, 2023

	2021							2022						
	Jun.	Jul.	Aug.	Sep.	Oct.	Nov.	Dec.	Jan.	Feb.	Mar.	Apr.	May	Jun.	
TASKS	TASK 1: Project Initiation			TASK 2: Research and Analysis				TASK 3: Implementation Phase						TASK 4: Verification and Monitoring
SCAP	Project Initiation			VALUES and Vision		Prioritization and Goals			Action Plan and Implementation			Final Plan		
IEMP				Campus Building Profiles	Energy Audits	Recommend ECMs			ECMs Finalized	Dashboard	Draft Plan	Final Plan	Final Approvals	
TCO				Identify Assets	Classify Assets	Decision Criteria	Funding Analysis		Costing Assets	Asset Decisions		Comprehensive Asset Plan	Final Approvals	
STARS														
Committee Workshop			Kick-Off Meeting	VALUES	Listening / Deep-Dives	Prioritization		Goal Setting		Action Plan	Draft Plan	Final Plan	Final Approvals	
Campus Work			President's Kick-off	VALUES	Open Houses	Campus Priorities	-	-	College Action Plan		Draft Plan		Final Approvals	
Deliverable Due														

We are here.

PHASE 01: VISIONING AND VALUES

- ✓ Lead Sustainability VALUES Workshop
- ✓ Host listening tours, focus groups and open forums with campus community
- ✓ Benchmark Energy Data for all campuses
- ✓ Create Campus Building Profiles

September - October

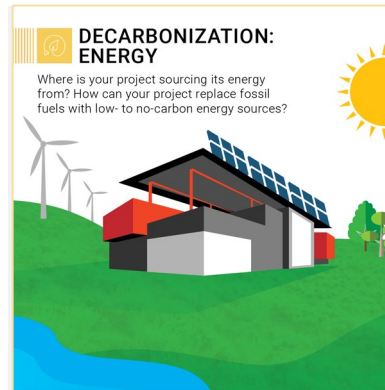
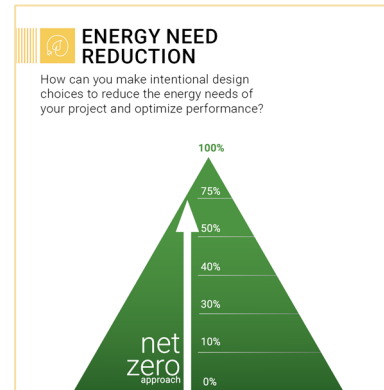




PHASE 02: PRIORITIES AND GOALS





- ✓ Synthesize the top VALUES for the District
- ✓ Establish priorities and discuss goals for short, mid and long-term
- ✓ Develop cost models around goals

November - January



 SEE	LED LIGHTING; UPGRADED HVAC SYSTEMS		SOLAR PANELS; CURRICULUM INTEGRATION		INCREASE IN COMMUNITY HEALTH	
---------------------------------------------------------------------------------------	-------------------------------------------	-------------------------------------------------------------------------------------	-----------------------------------------	-------------------------------------------------------------------------------------	---------------------------------	-------------------------------------------------------------------------------------

 FEEL	COMFORTABLE		PRIDE; EDUCATED; ACCOMPLISHED; MADE A DIFFERENCE		REDUCTION IN EXTREME HEAT	
------------------------------------------------------------------------------------------	-------------	---------------------------------------------------------------------------------------	-----------------------------------------------------------	---------------------------------------------------------------------------------------	------------------------------	---------------------------------------------------------------------------------------

 MEASURE	REDUCTION IN HOT/COLD CALLS; ENERGY COST SAVINGS		SOLAR PV GENERATION; REDUCTION IN CARBON EMISSIONS		AIR QUALITY ON CAMPUS AND SURROUNDING COMMUNITY	
---------------------------------------------------------------------------------------------	--------------------------------------------------------	---------------------------------------------------------------------------------------	----------------------------------------------------------	---------------------------------------------------------------------------------------	-------------------------------------------------------	---------------------------------------------------------------------------------------

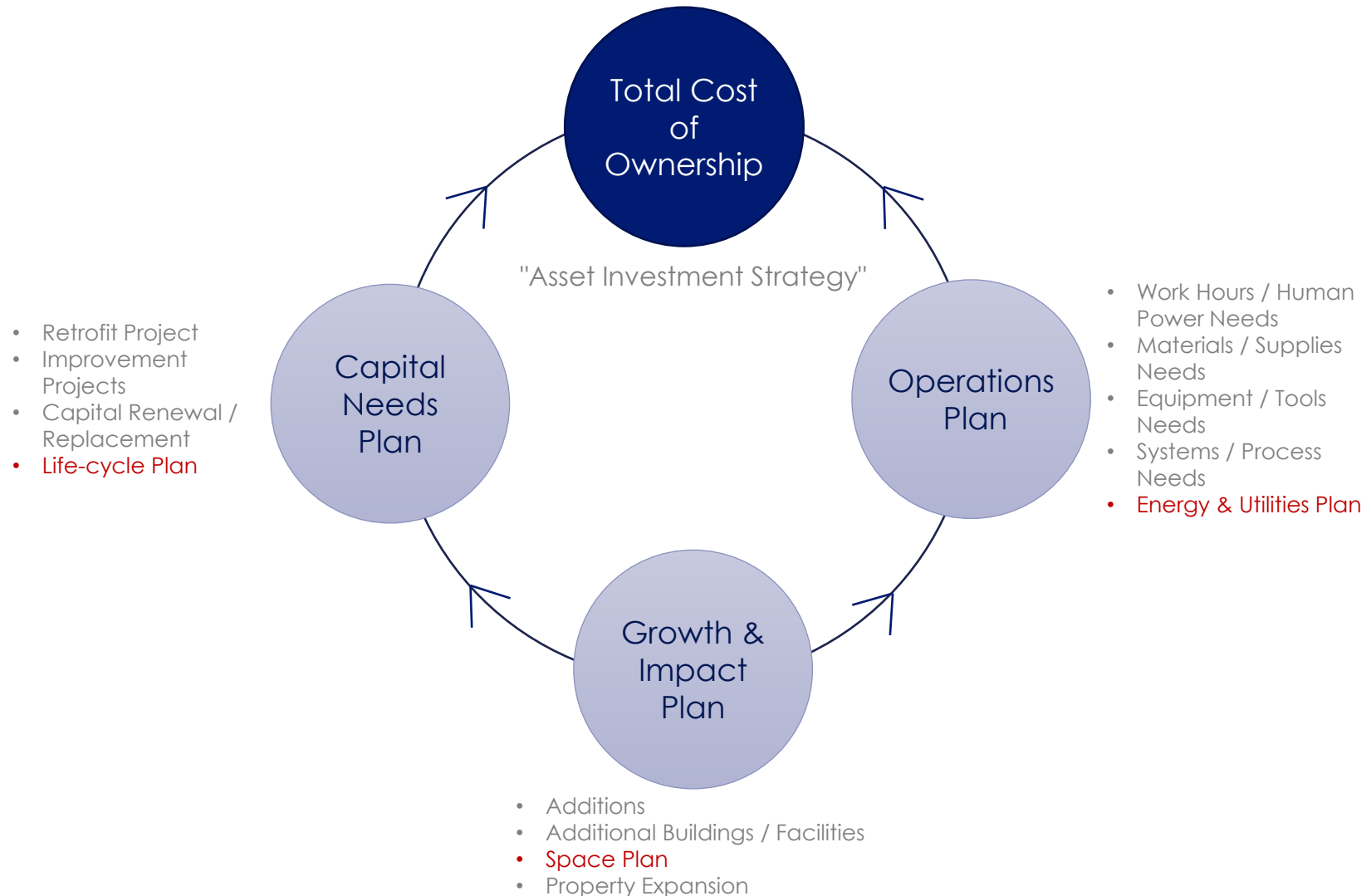


PHASE 03: ACTION PLAN AND IMPLEMENTATION

- ✓ Document long-term vision and goals
- ✓ Identify short-term, mid-term and long-term initiatives to meet district goals.
- ✓ Develop total cost of ownership cost models for each goal, including personnel needed
- ✓ Present Draft Of Deliverables

February - April

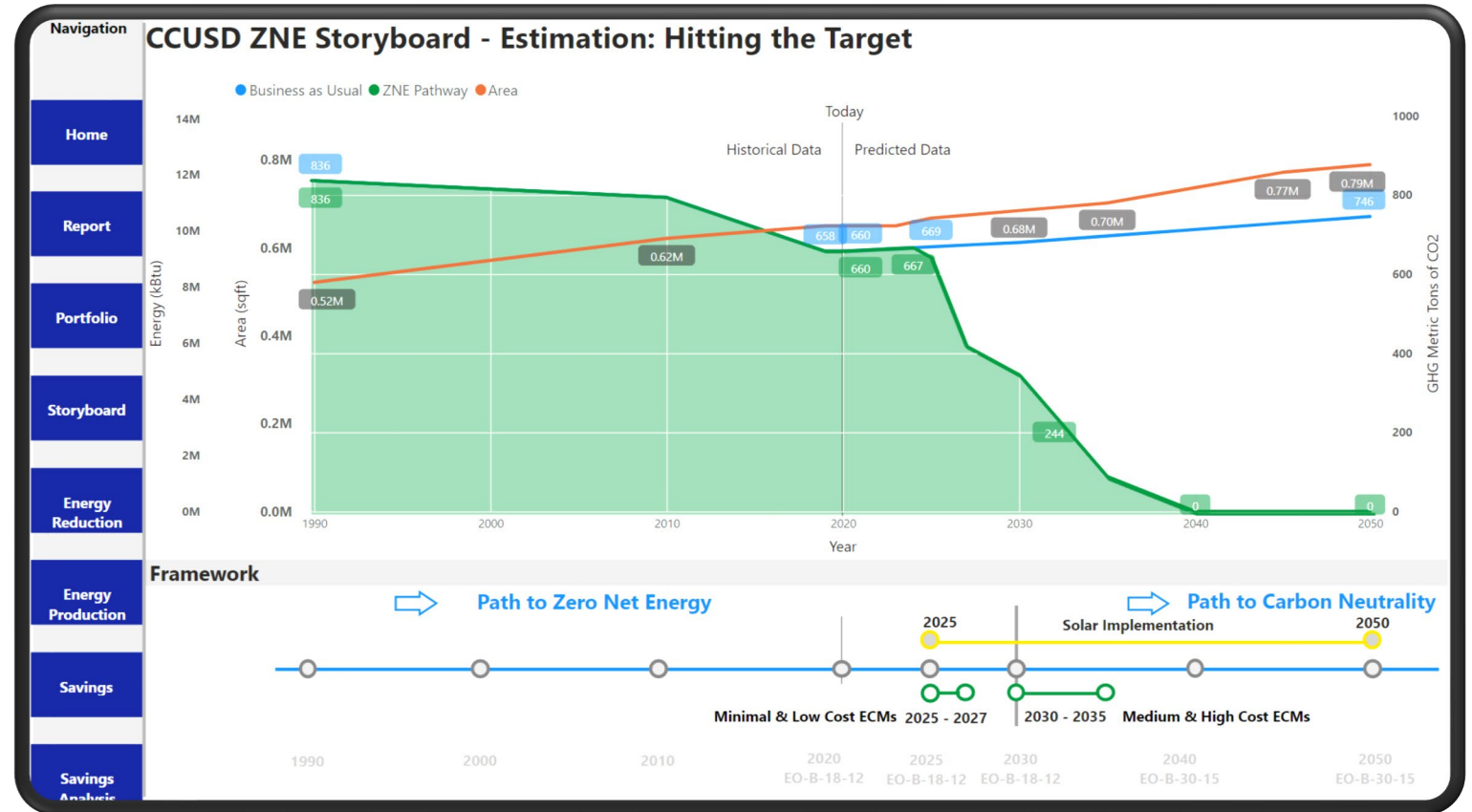
Comprehensive Plans for Assets





PHASE 04: FINAL PLAN AND APPROVALS

- ✓ Final presentation adoption and approval
- ✓ Establish training needs for key district personnel
- ✓ Visualize Monitoring Dashboard of the Plans
- ✓ Fine tune and update the dashboard



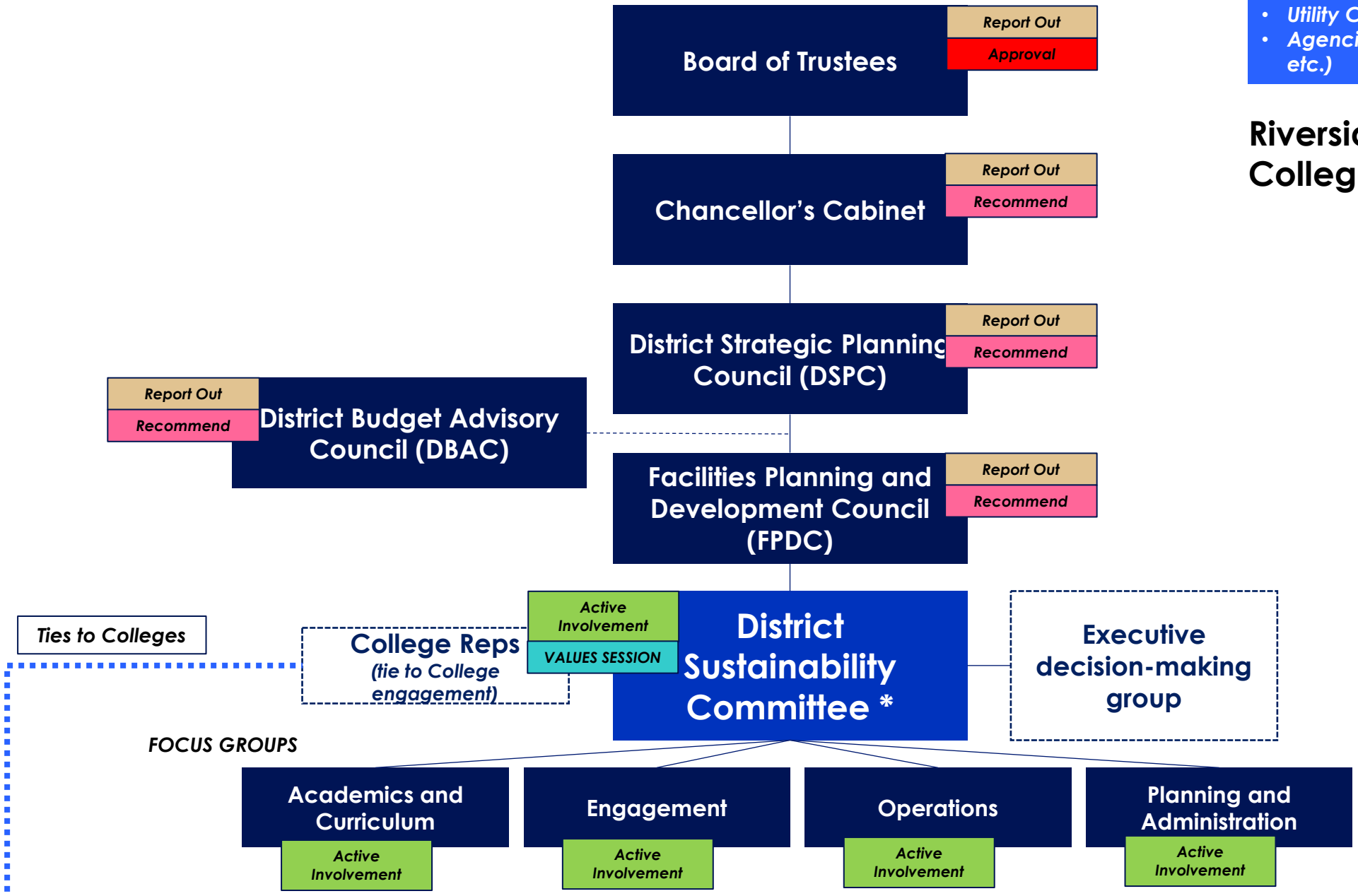
May - June

Engagement

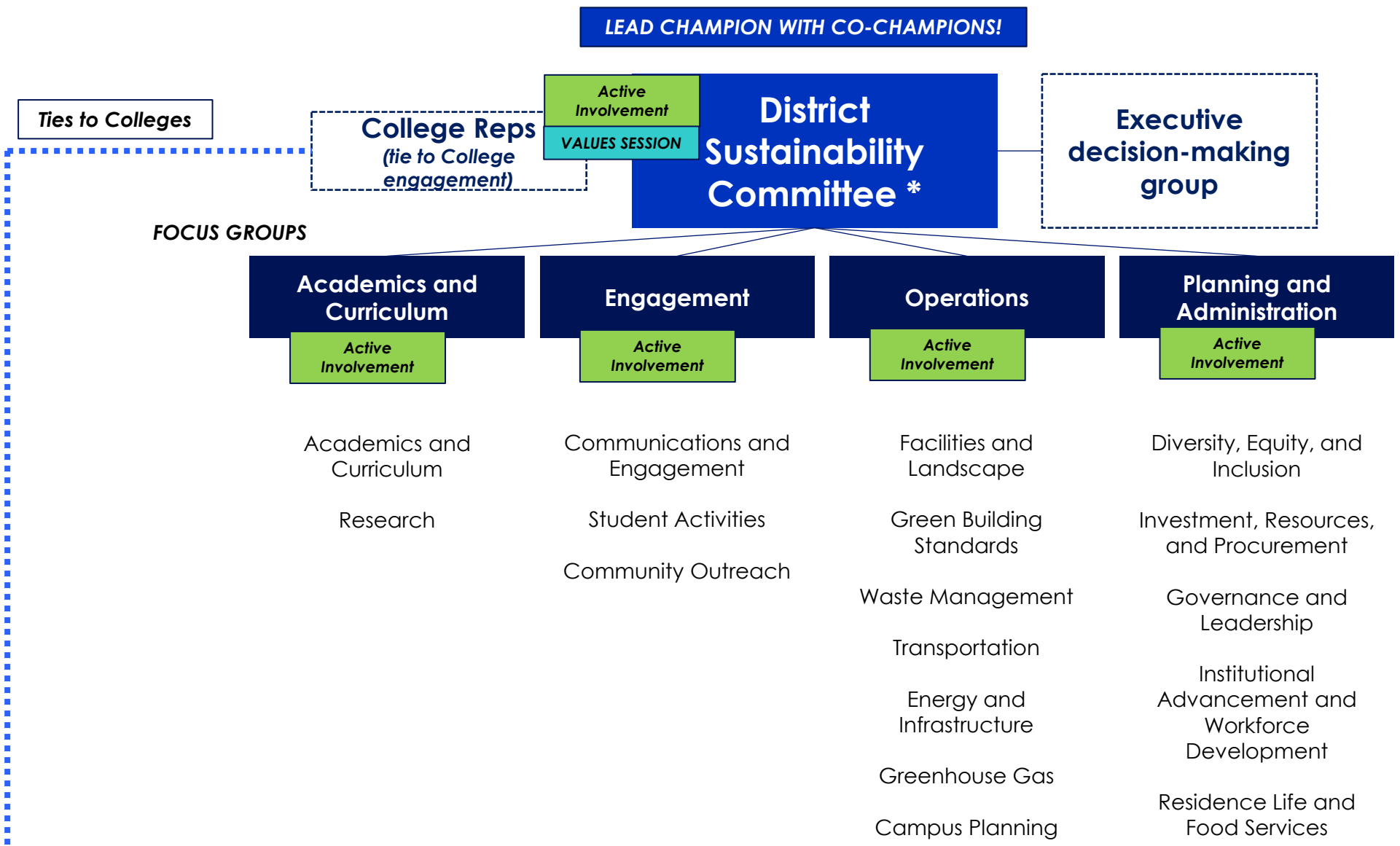


- Other Outreach and Engagement
- Local Universities/Colleges
 - Utility Companies
 - Agencies (transit, Cities, County, etc.)

Riverside Community College District



Engagement



District Sustainability Committee: *



- I. College Academic Senate Reps. (3)
- II. District Faculty Association Rep. (1)
- III. College Student Association Reps. (4)
- IV. Classified Reps. – MVC, NC, RCC, District Office
- V. Administrator Reps.
 - I. College VPBS
 - II. College Director FMO
 - III. District Facilities Planning and Development
 - IV. District Institutional Advancement and Economic Development

Sustainability Committee Members



District Office

- **Hussain Agah** - Associate Vice Chancellor
- **Mehran Mohtasham** - Director of Capital Planning
- **Bart Doering** - Facilities Development Director
- **Marisa Yeager** - Director, Government Relations
- **Myra Nava** - Classified Representative

Moreno Valley College

- **Fabian Biancardi** – Professor, Academic Senate
- **Kemari Wofford** – Student Representative, College Students Association
- **Majd Askar** - Interim Vice President, Business Services
- **Ron Kirkpatrick** - Director, Facilities M&O
- **Pending** – Classified Representatives

Norco College

- **Maxwell Murphey** - Associate Faculty, Academic Senate
- **Isaac Nunez** - Student Representative, College Students Association
- **Michael Collins** - Vice President, Business Services, Business Services Office
- **Steven Marshall** - Director, Facilities M&O
- **Andy Aldasoro** - Classified Representative

Riverside City College

- **Garth Schultz** – Associate Professor, Faculty Association
- **Tonya Huff** – Assistant Professor, Academic Senate
- **Jordyn Villanueva** - Student Representative, College Students Association
- **Albert Jaramillo** – Student Representative, College Students Association (Alternate)
- **Chip West** - Vice President, Business Services, Business Services Office
- **Robert Beebe** - Interim Director, Facilities M&O
- **Peter Lomas** - Classified Representative

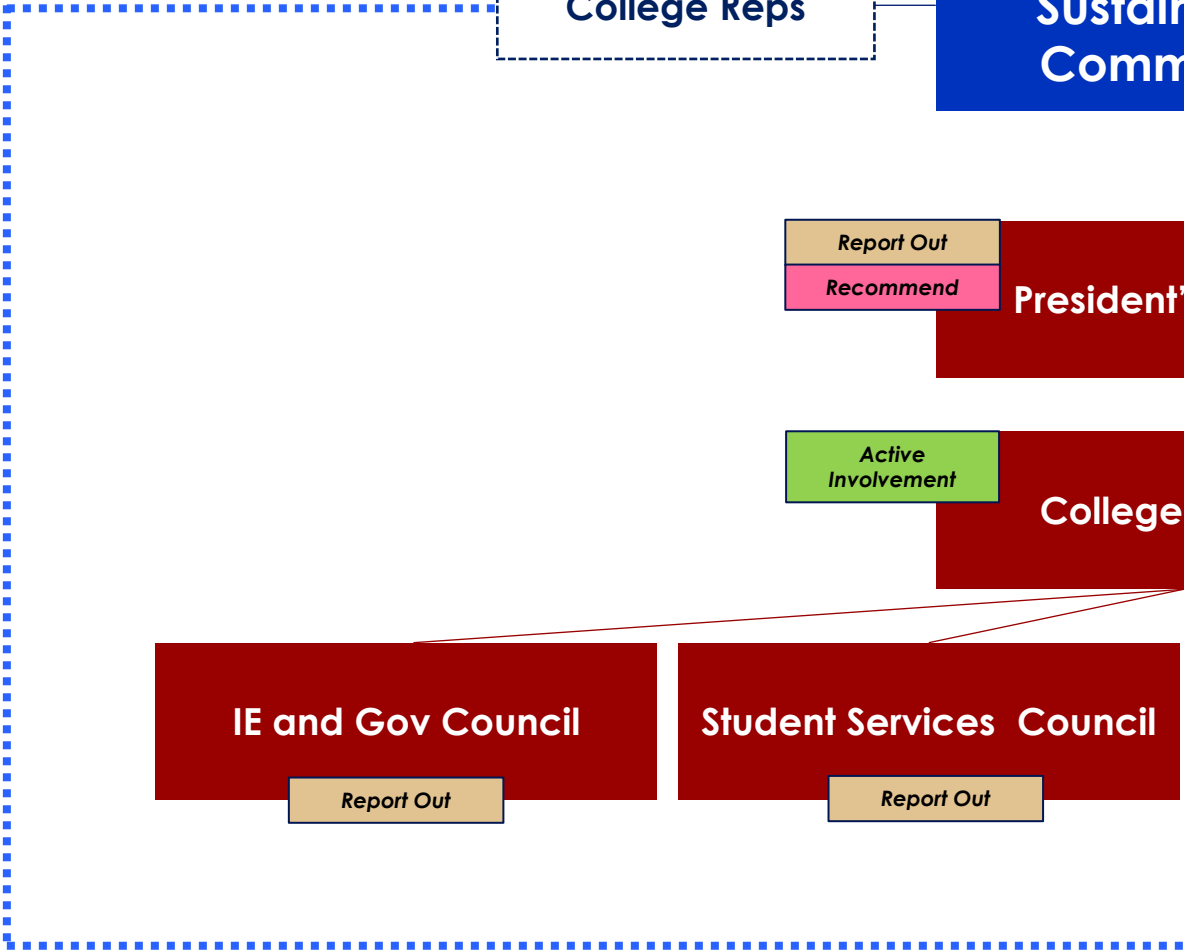
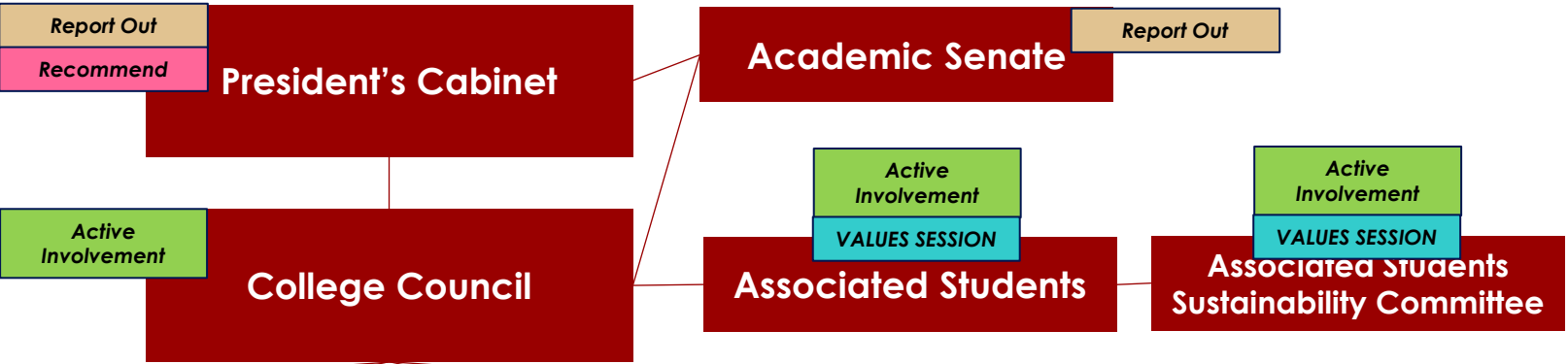
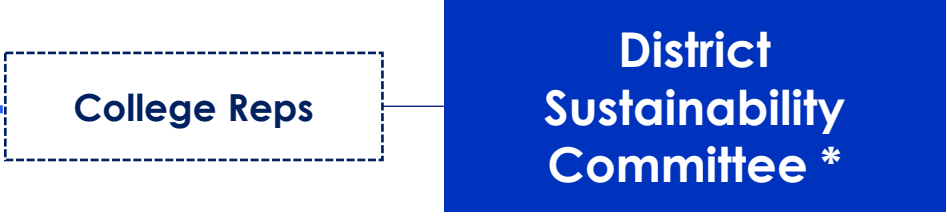
Engagement



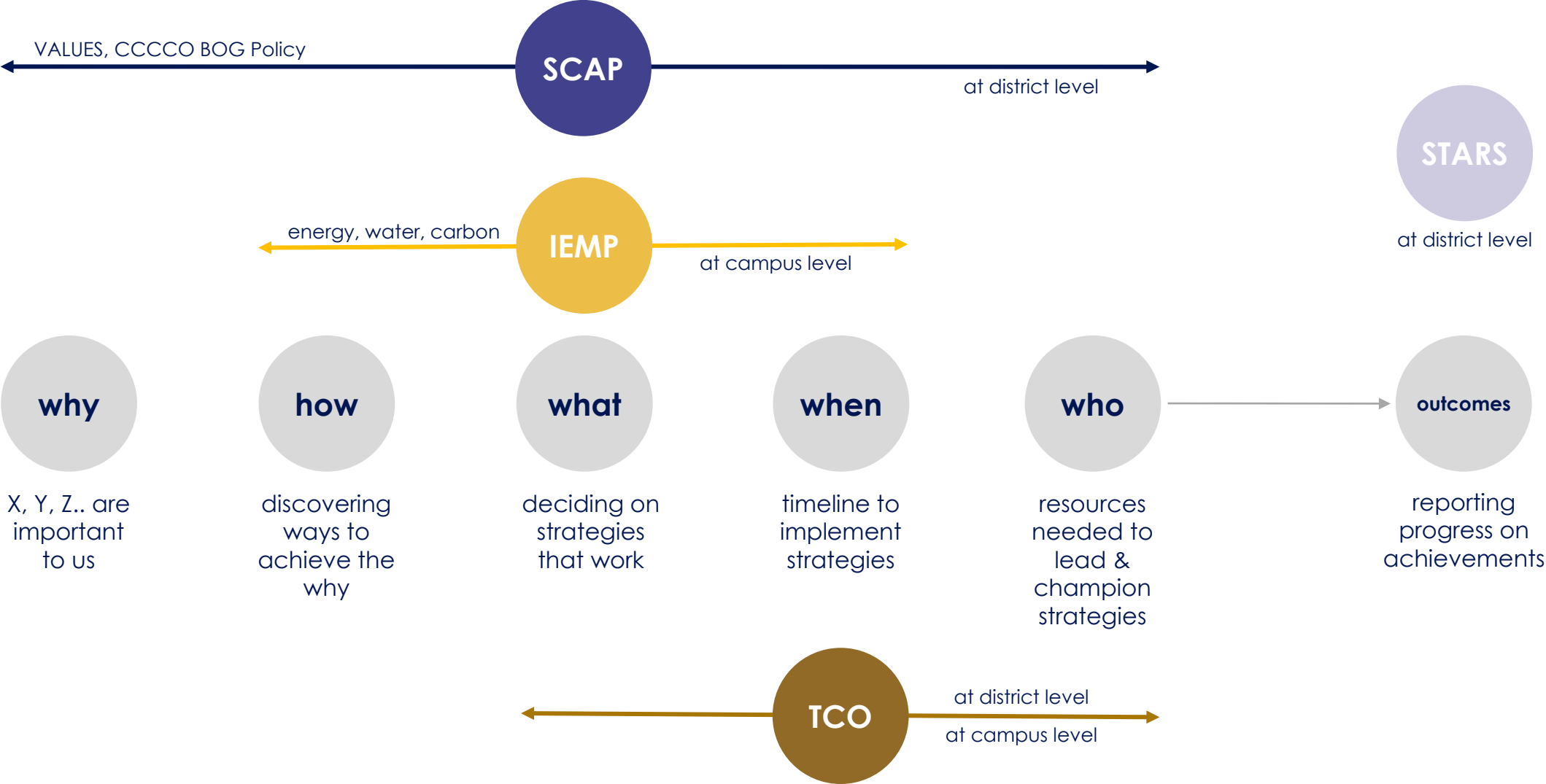
Other Outreach and Engagement:

- President's Advisory Board
- Open Houses

Norco College



Connections



Sustainability and Climate Action Plan

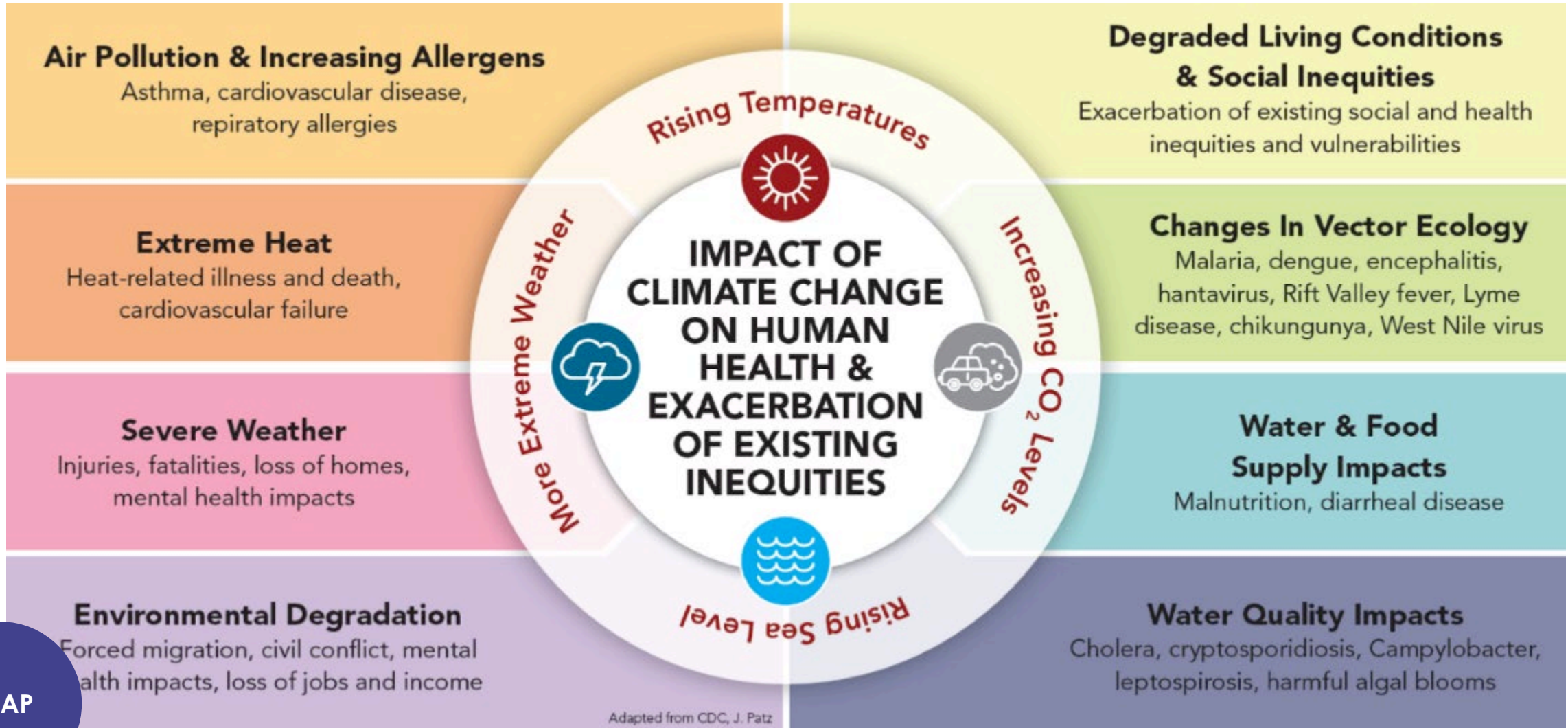


Figure 1. Impact of Climate Change on Human Health and Exacerbation of Existing Inequities (Adapted from CDC, J. Patz).

System Effort and Goals



CALIFORNIA COMMUNITY COLLEGES CLIMATE CHANGE AND SUSTAINABILITY EFFORTS AND GOALS

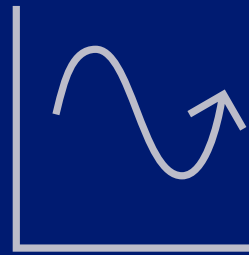
Category	Sub-Category			
Planning and Administration	<ul style="list-style-type: none"> Justice, Equity, Diversity, and Inclusion Coordination and Planning 	2022 (Benchmark)	2025 (Build and Institutionalize)	2030 (Improve and Reassess)
Academics	<ul style="list-style-type: none"> Academic Infusion and Curriculum Integration 			
Engagement	<ul style="list-style-type: none"> Campus Engagement Public Engagement 			
Operations	<ul style="list-style-type: none"> Greenhouse Gas Emissions Reduction Green Buildings Energy Water Waste Purchasing and Procurement Transportation Food Systems 			

Integrated Energy Master Plan

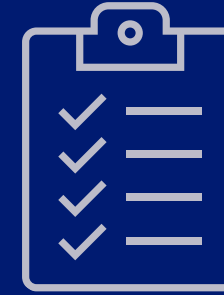
- a long-term strategy of achieving significant reductions in energy, water, greenhouse gas emissions.



Discovery



Analysis



Recommendations



IEMP

AASHE Stars: Measuring Your Vision



Remember those sub-committees? They were formed by the Stars framework!

Academic and Curriculum 58 Points

Curriculum
Research

Engagement 41 Points

Campus Engagement
Public Engagement

Operations 72 Points

Air and Climate
Buildings
Energy
Food and Dining
Grounds
Purchasing
Transportation
Waste
Water

Planning and Admin. 32 Points

Coordination and Planning
Diversity and Affordability
Investment and Finance
Wellbeing and Work

Innovation and Leadership 0.5 Points Each

Exemplary Practice and
Innovation

STARS

Total Cost of Ownership Model



SCAP

IEMP

Decision Making

Asset Decision
Asset Annual Funding
Asset Comprehensive Plan

Information Gathering

Asset Costing
Asset Inspection
Asset Performance

Foundation

Managed Assets & Asset Inventory
Global Location Hierarchy
Asset Classification

Integrity

Asset information sharing
Asset Reporting
Data Management & Verification

TCO Principles that provide a comprehensive approach to balance both the financial management and facilities management of an organization

TCO

02

Questions for you!

Questions



- When it comes to your **College's sustainability journey...**
 - Share past **successes and challenges...**
 - What should we be **focusing** on, or what is **most important** for us to know?
- What **excites** you about this process?

03

Next Steps

Creating a Sustainability Framework



PROBLEM

Clients want more than a rating system checklist

SOLUTION

DLR Group created a framework that goes beyond a checklist and connects user experience to goals.



Comprehensive Sustainability Language



Decarbonization:
Transportation
Multi-Modal
Transportation
Walkability and Safety

ACCESS + MOBILITY

How can your project advocate and celebrate transit-oriented design, connections between transit hubs, and walkable communities?

Community Access
Community Partnerships
Neighborhood Vitality
Transparency:
Decision-Making

COMMUNITY CONNECTOR

How can your project support its surrounding community, build community partnerships, and connect residents to shared resources?

Beauty & Inspiration
Historical Context of Place
Inclusion
Individual vs. Collective
Placemaking
Multi-Cultural Relevance
Organizational
Transformation

CULTURE + IDENTITY

How can your project celebrate its history and cultural context to develop a strong sense of place that speaks to the identities of occupants and surrounding communities?

Building Ecology
Decarbonization:
Sequestration
Ecosystem Services
Public Space
Site Ecology

OUTDOOR ENVIRONMENTAL QUALITY

How can your project's outdoor spaces restore ecology, build community, and create a strong sense of place?

Climate Justice
Economic Development
Programming
Equitable Development
Siting
Equity
Land Use
Social Justice

EQUITABLE DEVELOPMENT

How can your project promote affordability, provide access to opportunity, and advocate for those in need?

Active Spaces
Biophilia
Evidence-Based
Modalities
Nourishment
Play

HEALTH + WELL-BEING

How can intentional design features actively promote users' emotional and physical well-being and encourage them to make healthier choices?

Acoustic Comfort
Air Quality
Thermal Comfort
Visual Comfort

INDOOR ENVIRONMENTAL QUALITY

How can your project support user comfort and productivity?

Conscious Material
Sourcing
Decarbonization:
Materials
Design for Disassembly
Handprinting
Purpose Over Surplus
Transparency:
Material Ingredients

MATERIALS IMPACT

How do your materials choices support healthy ecology, communities, and economies?

Building Systems
Selection
Decarbonization: Energy
Distributed Energy
Generation
Energy Cost Reduction
Energy Need Reduction

ENERGY

How can changes in energy infrastructure support your broader mission, reduce costs, and build a healthier planet?

Building Resiliency
Community Resiliency
Economic Resiliency
Emergency Planning
Emotional Resiliency
Risk Adaptation &
Mitigation

RESILIENCY

How can your project help its users and community adapt to and recover from unexpected situations?

Conscious Cleaning
& Upkeep Goods &
Supplies
Operational Optimization
Regulatory Partnerships
Safety & Security
Transparency: Building
Performance
Waste

PROCUREMENT + OPERATIONS

How can procurement, building operations, and management practices support your broader project goals?

(Storm) Water
Management
Hydrological Balance
Potable Water Quality
Water Context of Place
Water Self-Sufficiency

WATER

What connections to water are important to your users and neighboring communities?

Viewing **Architecture** through the **Lens** of **User Experience** & **Sustainability**

Prioritizing your VALUES at your College



Norco College

- Resources Council
- Sustainability Task Force
- Associated Students
- Associated Students Sustainability Committee

VALUES

Take 5 minutes to familiarize yourself with the VALUES cards. Use the icons to share if a card resonates or does not for the Stripe User Experience and Sustainability Goals.



FACILITIES

LINDSEY'S GROUP

VALUES

Using the cards that resonated with the group in this step we will spend time prioritizing. Now imagine you were investing budget in 6 improvements that would connect Sustainability to User Experience. Which VALUE would have the most impact for your investment?