

---

# Meeting Minutes

---



Architecture Engineering Planning Interiors

1650 Spruce Street, Suite 300  
Riverside, CA 92507

Meeting Date	09.01.2021
To	Hussain Agah, Mehran Mohtasham
From	DLR Group
Location	via ZOOM
Project	RCCD: Sustainability and Climate Action Plan
Project No.	N/A
Attendees	Leigh Anne Jones, Linsey Graft, Chris Lawrence, Shona O'Dea, Hussain Agah, Mehran Mohtasham, (5 others) from the College - Robin Steinback, Carlos Lopez, Christopher Sweeten, Majd Askar
Purpose	MVC President's Cabinet Kickoff Meeting

---

## Agenda:

- **Project Information (10 minutes)**
  - DLR Group Team Introduction
  - Integrated Planning Approach
  - Schedule / Engagement
  - Overview of Deliverables
- **Activity (10 minutes)**
  - Share some past successes of your committee...
  - What should we be focusing on, or what is most important for us to know?
  - What excites you about this process?
- **Next Steps (5 minutes)**
  - Introduction of the VALUES workshop

## Minutes:

### Project Information (Slides 1-20):

- DLR Group Team Introduction
- Integrated Planning Approach  
Majd Askar is now the VP Business Services and is no longer interim.  
The Engagement graphic will be adjusted to reflect the Campus's structure.
- Schedule / Process / Engagement
- Overview of Deliverables

### Discussion (Slides 21-22):

- When it comes to your **College's sustainability journey...**

- Share past **successes and challenges...**

We have had a commitment to using recycled water for landscaping, and have been implementing drought-tolerant landscaping.

New buildings are more energy efficient.

Looking forward to implementing solar energy.

The college has programs pertaining to the global supply chain and sustainability, as well as electrified trucks.

- What should we be **focusing** on, or what is **most important** for us to know?

Sustainability needs to be implemented in the procurement of materials and supplies for the campus.

Students would like more recycling programs and the ability to separate materials.

The students would like to see more recycled water, solar panels, and would like to see a reduction in the carbon foot print and using EV charging. Staff is also interested in these strategies.

Put sustainability in display.

Cross collaboration with the STEM program is important – Sustainability and environmental stewardship.

- What **excites** you about this process?

#### **Next Steps (Slides 23-26):**

- Introduction of the VALUES Workshop

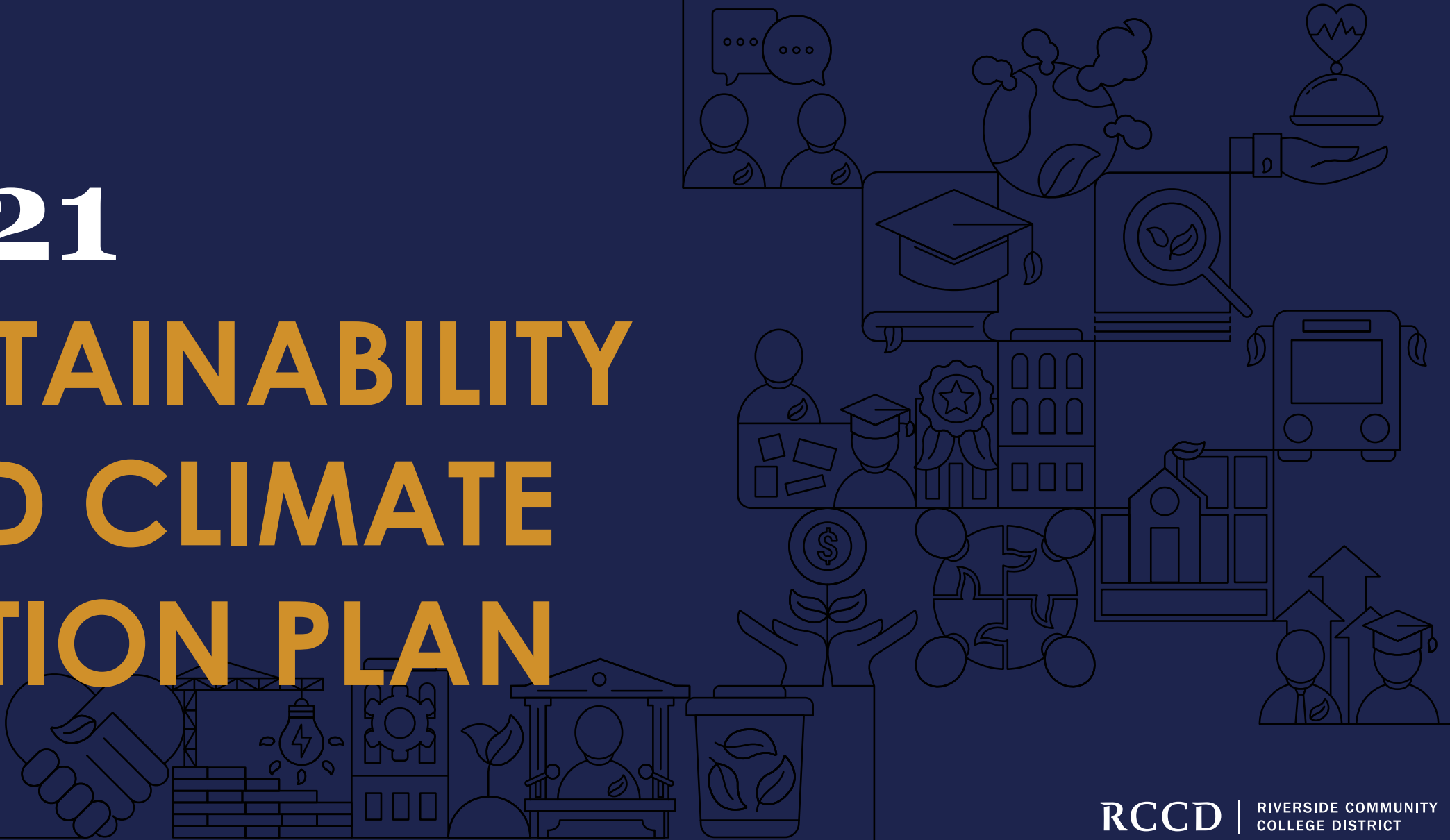
# 2021 SUSTAINABILITY AND CLIMATE ACTION PLAN

President's Cabinet

Kick-Off Meeting

September 01, 2021

**RCCD** | RIVERSIDE COMMUNITY  
COLLEGE DISTRICT



# Today's Agenda

## Project Information

- DLR Group Team Introduction
- Integrated Planning Approach
- Schedule / Process / Engagement
- Overview of Deliverables

## Activity

- Share past successes and challenges...
- What should we be focusing on, or what is most important for us to know?
- What excites you about this process?

## Next Steps:

Introduction of the VALUES workshop

# 01

## Project Introduction

# Your Team



**Leigh Anne Jones**  
Principal in Charge



**Lindsey Perez**  
Sustainability and Climate  
Action Plan Leader



**Prem Sundharam**  
Total Cost of Ownership  
Leader



**Chris Lawrence**  
Project Manager



**Linsey Graff**  
Engagement/STARS  
Leader



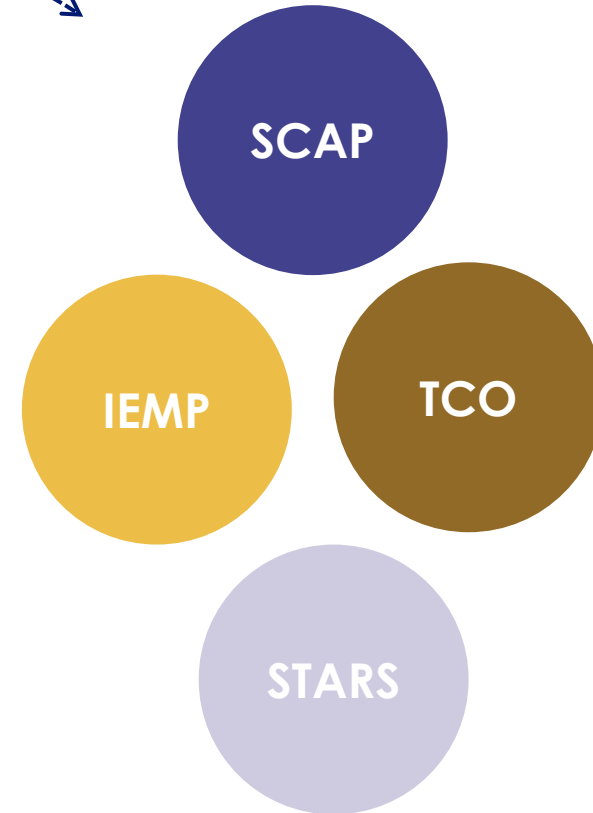
**Shona O'Dea**  
Integrated Energy  
Master Plan Leader

# Integrated Planning Approach



## CONNECTING TO OTHER PLANS:

- District Strategic Plan
- College's Strategic Plan
- College's Educational Master Plan
- College's Facilities Master Plan
- District Five-year Capital Construction Plan
- College's Operational and Maintenance Plan
- Fiscal Plan
- Solar Planning Initiative



# Project Schedule

	2021							2022						Project Complete May 31, 2023
	Jun.	Jul.	Aug.	Sep.	Oct.	Nov.	Dec.	Jan.	Feb.	Mar.	Apr.	May	Jun.	
TASKS	TASK 1: Project Initiation			TASK 2: Research and Analysis				TASK 3: Implementation Phase						TASK 4: Verification and Monitoring
SCAP	Project Initiation			VALUES and Vision		Prioritization and Goals			Action Plan and Implementation			Final Plan		
IEMP				Campus Building Profiles	Energy Audits	Recommend ECMs			ECMs Finalized	Dashboard	Draft Plan	Final Plan	Final Approvals	
TCO				Identify Assets	Classify Assets	Decision Criteria	Funding Analysis		Costing Assets	Asset Decisions		Comprehensive Asset Plan	Final Approvals	
STARS														
Committee Workshop			Kick-Off Meeting	VALUES	Listening / Deep-Dives	Prioritization		Goal Setting		Action Plan	Draft Plan	Final Plan	Final Approvals	
Campus Work			President's Kick-off	VALUES	Open Houses	Campus Priorities	-	-	College Action Plan		Draft Plan		Final Approvals	
Deliverable Due														

**We are here.**



## PHASE 01: VISIONING AND VALUES

- ✓ Lead Sustainability VALUES Workshop
- ✓ Host listening tours, focus groups and open forums with campus community
- ✓ Benchmark Energy Data for all campuses
- ✓ Create Campus Building Profiles

September - October



# PHASE 02: PRIORITIES AND GOALS

- ✓ Synthesize the top VALUES for the District
- ✓ Establish priorities and discuss goals for short, mid and long-term
- ✓ Develop cost models around goals

November - January

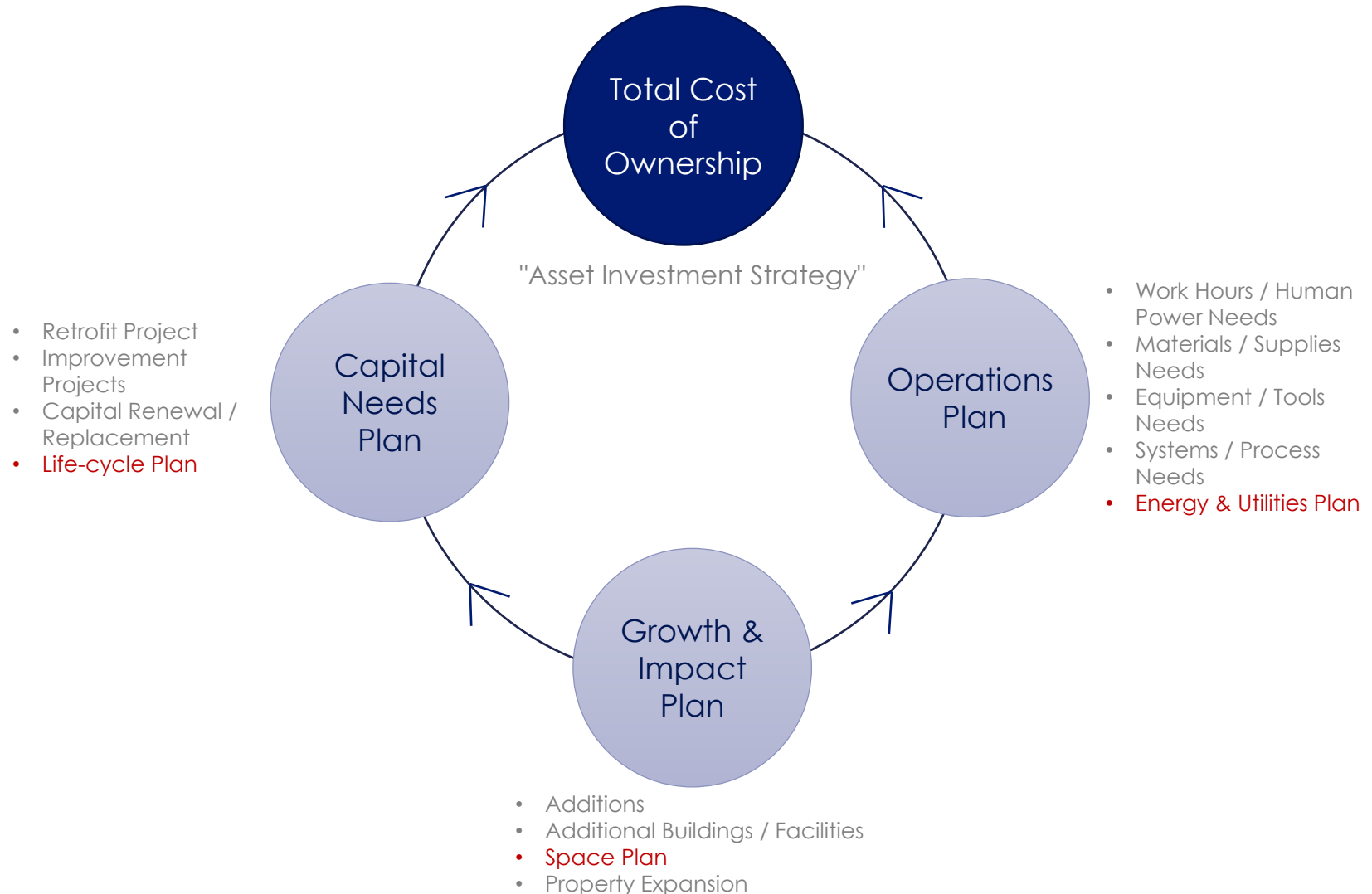
 <p><b>ENERGY NEED REDUCTION</b> How can you make intentional design choices to reduce the energy needs of your project and optimize performance?</p>	 <p><b>DECARBONIZATION: ENERGY</b> Where is your project sourcing its energy from? How can your project replace fossil fuels with low- to no-carbon energy sources?</p>	 <p><b>CLIMATE JUSTICE</b> How can your project mitigate the effects of climate change to ensure that no single community or group of people is unjustly affected by the project's environmental burdens or benefits?</p>	
 <p><b>SEE</b></p>	<p>LED LIGHTING; UPGRADED HVAC SYSTEMS</p>	<p>SOLAR PANELS; CURRICULUM INTEGRATION</p>	<p>INCREASE IN COMMUNITY HEALTH</p>
 <p><b>FEEL</b></p>	<p>COMFORTABLE</p>	<p>PRIDE; EDUCATED; ACCOMPLISHED; MADE A DIFFERENCE</p>	<p>REDUCTION IN EXTREME HEAT</p>
 <p><b>MEASURE</b></p>	<p>REDUCTION IN HOT/COLD CALLS; ENERGY COST SAVINGS</p>	<p>SOLAR PV GENERATION; REDUCTION IN CARBON EMISSIONS</p>	<p>AIR QUALITY ON CAMPUS AND SURROUNDING COMMUNITY</p>

## PHASE 03: ACTION PLAN AND IMPLEMENTATION

- ✓ Document long-term vision and goals
- ✓ Identify short-term, mid-term and long-term initiatives to meet district goals.
- ✓ Develop total cost of ownership cost models for each goal, including personnel needed
- ✓ Present Draft Of Deliverables

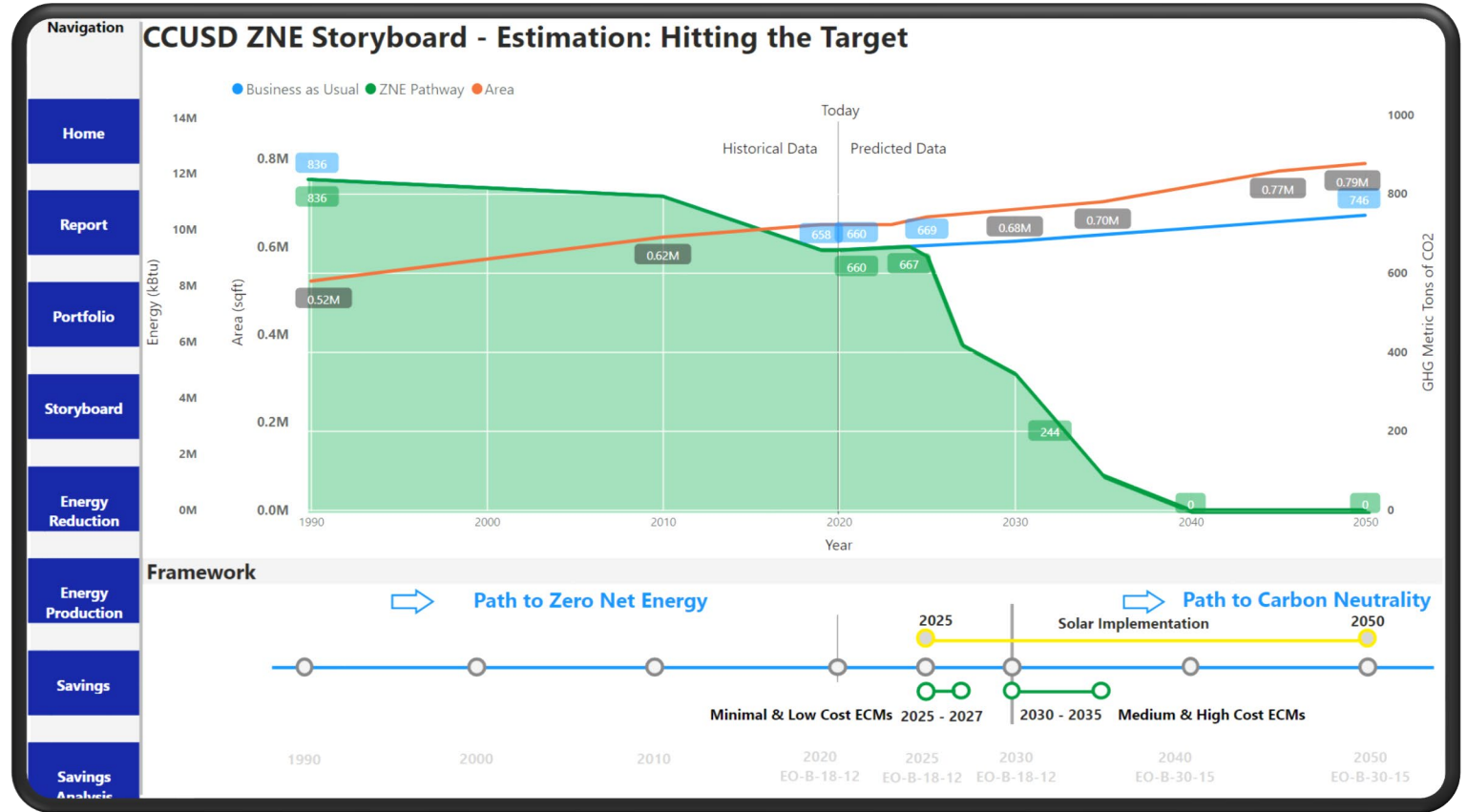
**February - April**

## Comprehensive Plans for Assets



# PHASE 04: FINAL PLAN AND APPROVALS

- ✓ Final presentation adoption and approval
- ✓ Establish training needs for key district personnel
- ✓ Visualize Monitoring Dashboard of the Plans
- ✓ Fine tune and update the dashboard



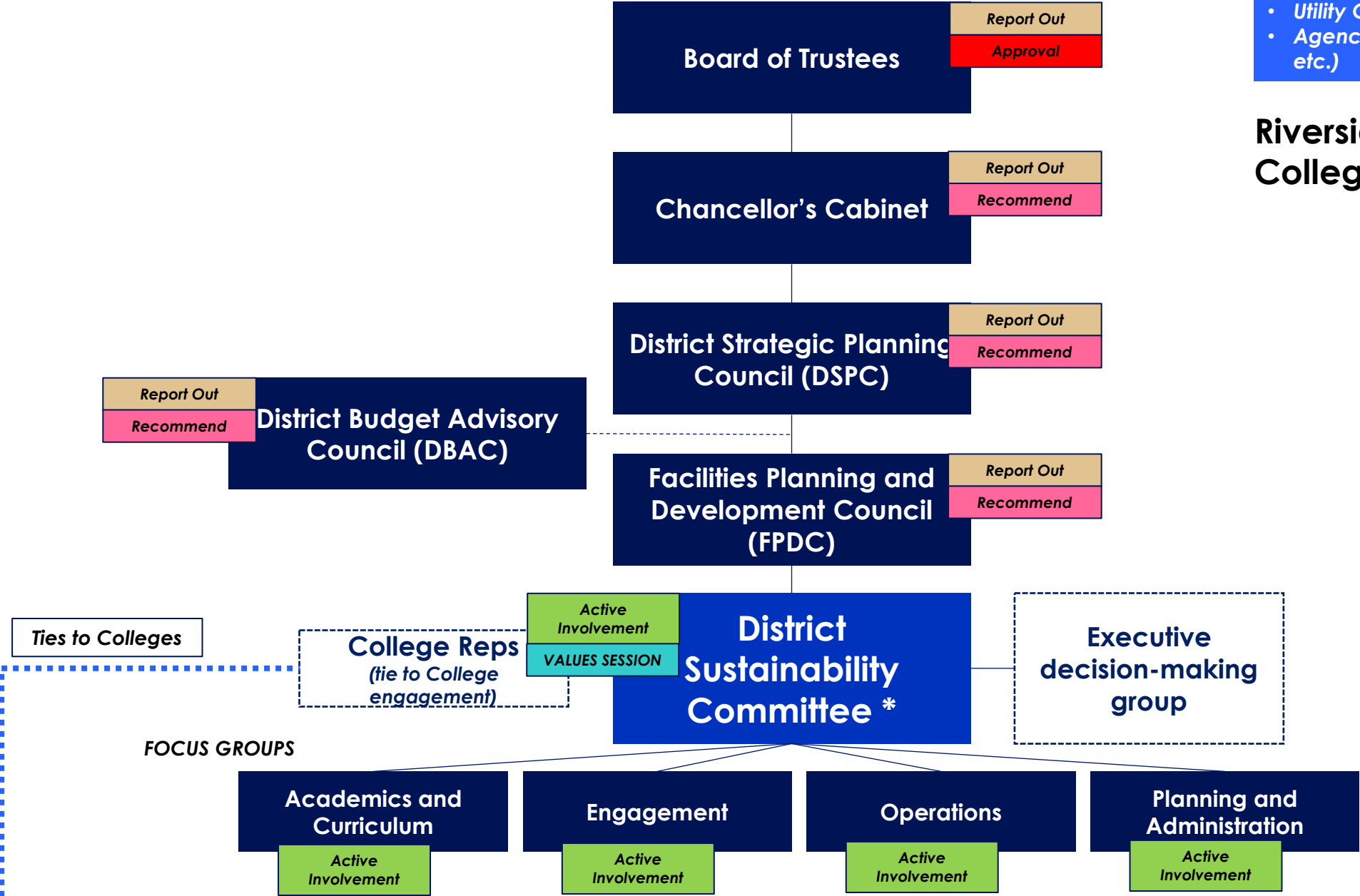
May - June

# Engagement

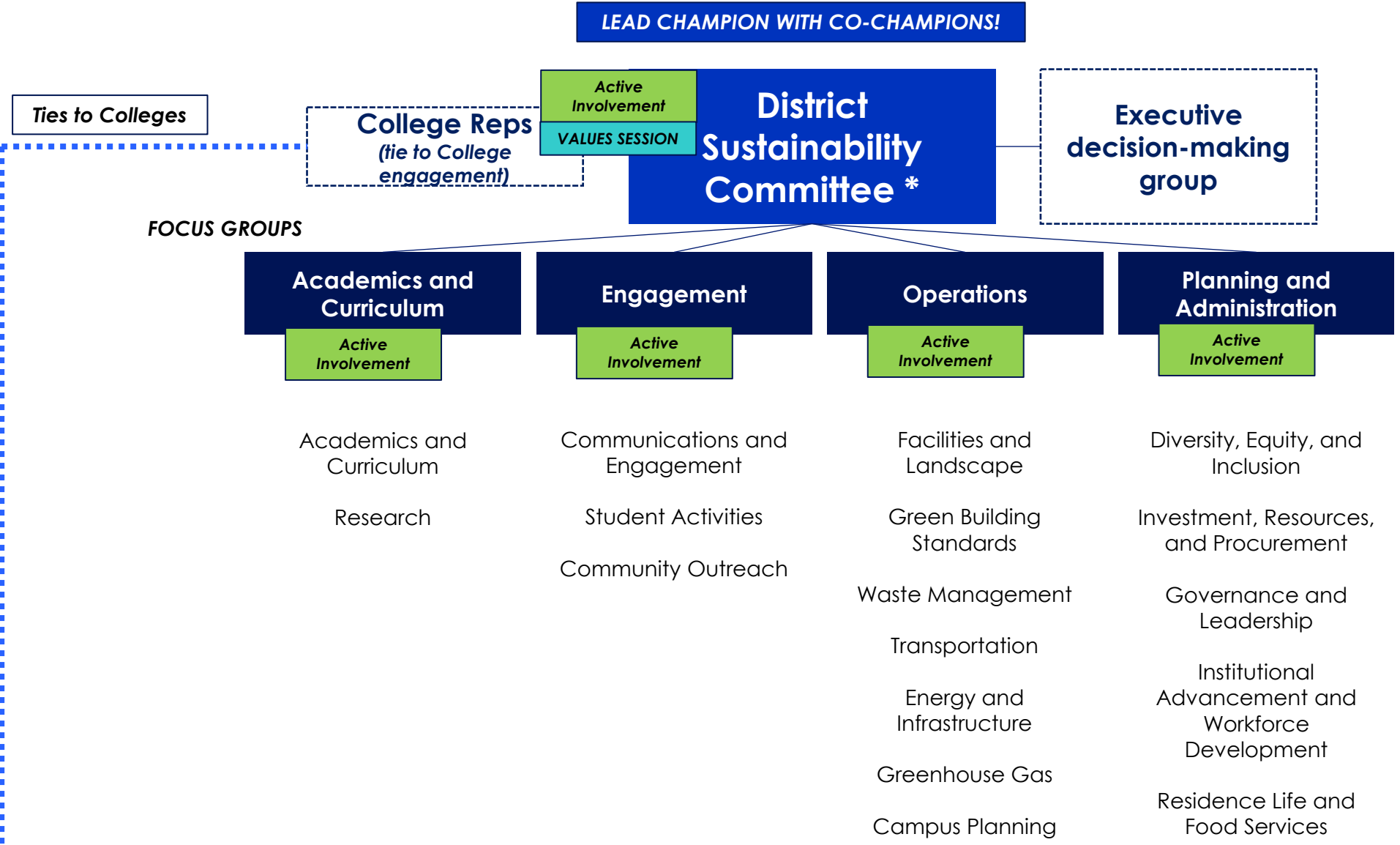
**Other Outreach and Engagement:**

- Local Universities/Colleges
- Utility Companies
- Agencies (transit, Cities, County, etc.)

## Riverside Community College District



# Engagement



- District Sustainability Committee: \***
- I. College Academic Senate Reps. (3)
  - II. District Faculty Association Rep. (1)
  - III. College Student Association Reps. (4)
  - IV. Classified Reps. – MVC, NC, RCC, District Office
  - V. Administrator Reps.
    - I. College VPBS
    - II. College Director FMO
    - III. District Facilities Planning and Development
    - IV. District Institutional Advancement and Economic Development

# Sustainability Committee Members

## District Office

- **Hussain Agah** - Associate Vice Chancellor
- **Mehran Mohtasham** - Director of Capital Planning
- **Bart Doering** - Facilities Development Director
- **Marisa Yeager** - Director, Government Relations
- **Myra Nava** - Classified Representative

## Moreno Valley College

- **Fabian Biancardi** – Professor, Academic Senate
- **Kemari Wofford** – Student Representative, College Students Association
- **Majd Askar** - Vice President, Business Services
- **Ron Kirkpatrick** - Director, Facilities M&O
- **Pending** – Classified Representatives

## Norco College

- **Maxwell Murphey** - Associate Faculty, Academic Senate
- **Isaac Nunez** - Student Representative, College Students Association
- **Michael Collins** - Vice President, Business Services, Business Services Office
- **Steven Marshall** - Director, Facilities M&O
- **Andy Aldasoro** - Classified Representative

## Riverside City College

- **Garth Schultz** – Associate Professor, Faculty Association
- **Tonya Huff** – Assistant Professor, Academic Senate
- **Jordyn Villanueva** - Student Representative, College Students Association
- **Albert Jaramillo** – Student Representative, College Students Association (Alternate)
- **Chip West** - Vice President, Business Services, Business Services Office
- **Robert Beebe** - Interim Director, Facilities M&O
- **Peter Lomas** - Classified Representative

# Engagement

Other Outreach and Engagement:  
• Open Houses

Moreno Valley College

College Reps

District Sustainability Committee \*

President's Cabinet

Report Out  
Recommend

Report Out

Strategic Planning Council

Associated Students

Active Involvement  
VALUES SESSION

Academic Senate

Report Out

Inst. Mission and Effectiveness Council

Report Out

Student Learning Programs and Services Council

Report Out

Resources Council

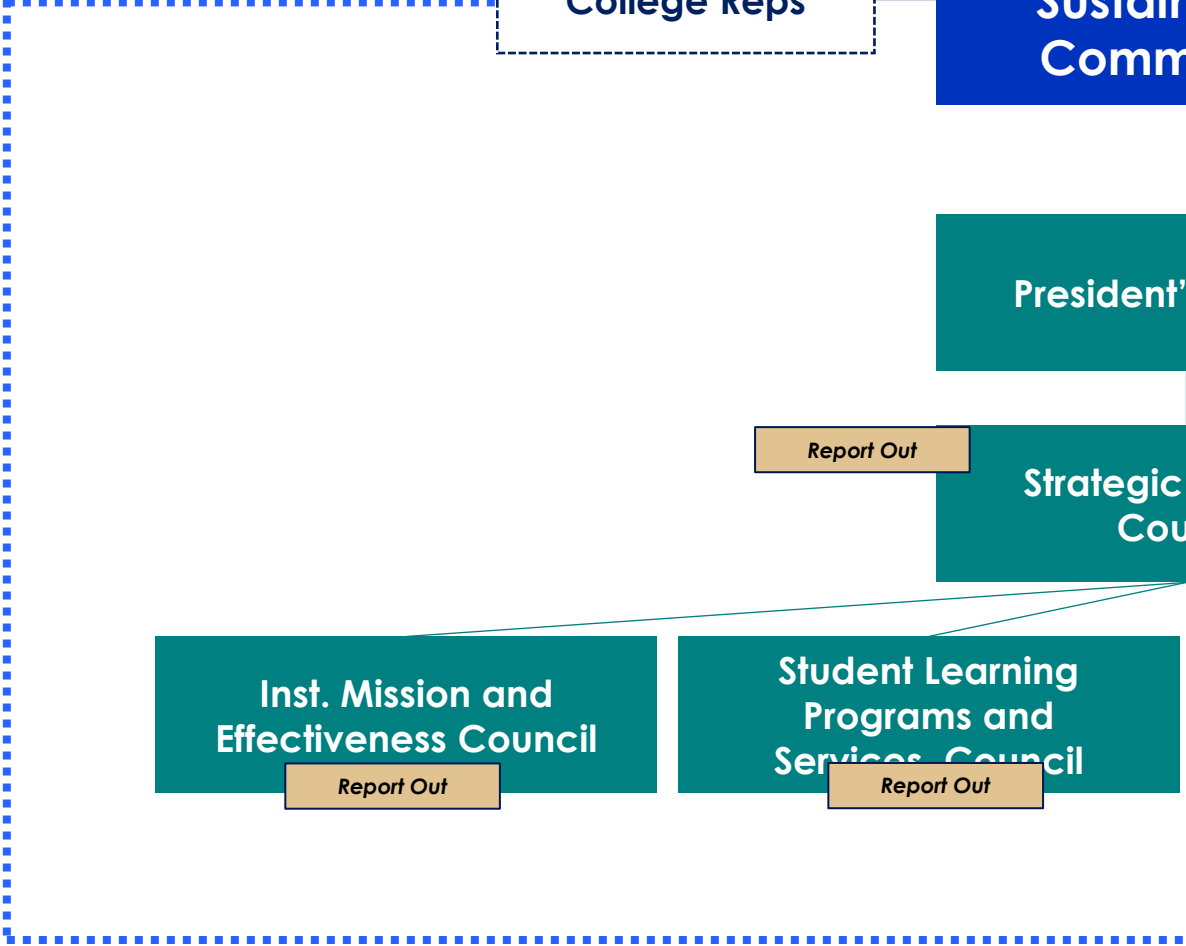
Report Out  
VALUES SESSION

Leadership and Gov. Council

Report Out

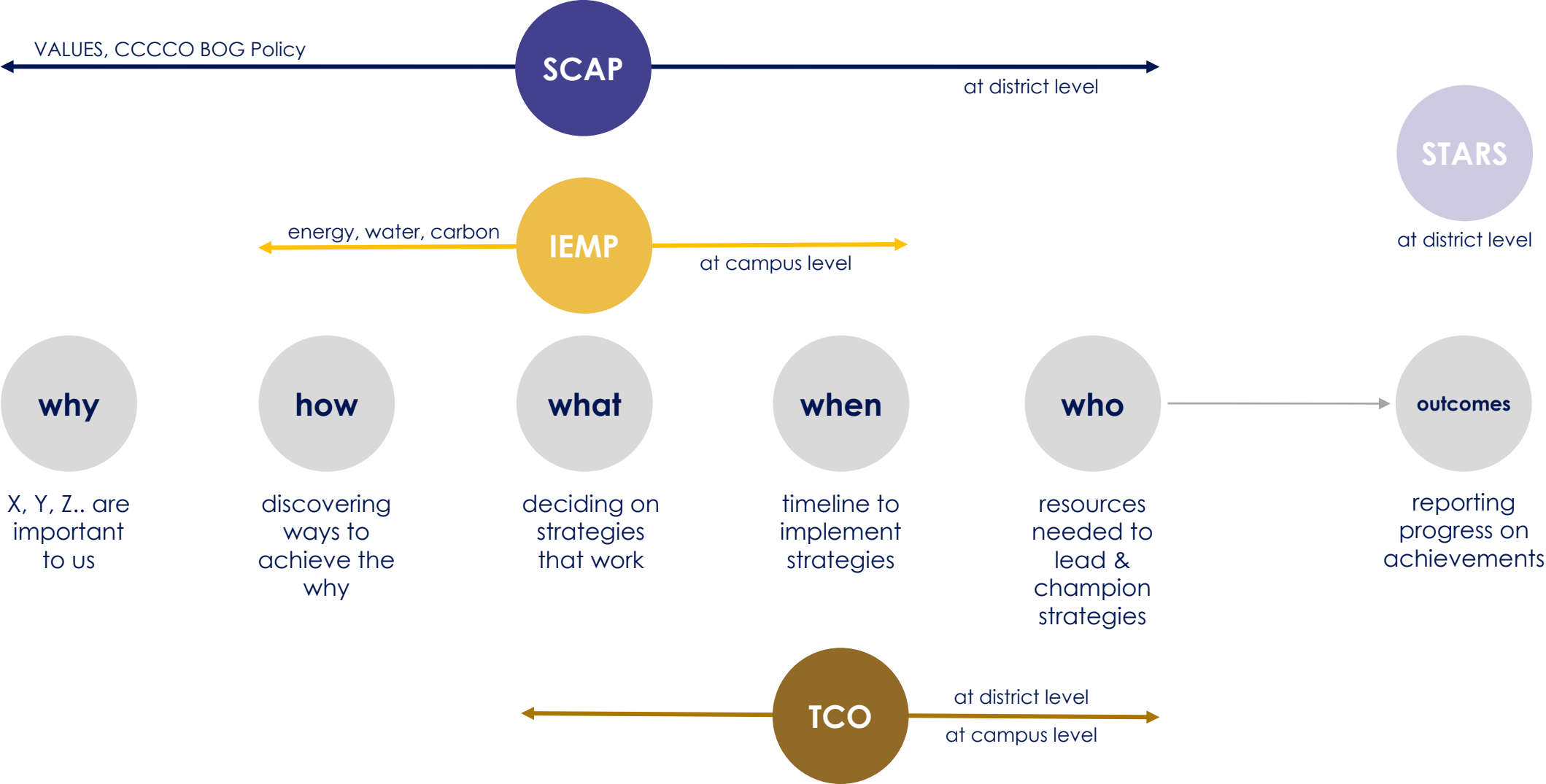
Sustainability Task Force

Active Involvement  
VALUES SESSION  
Future Task Force

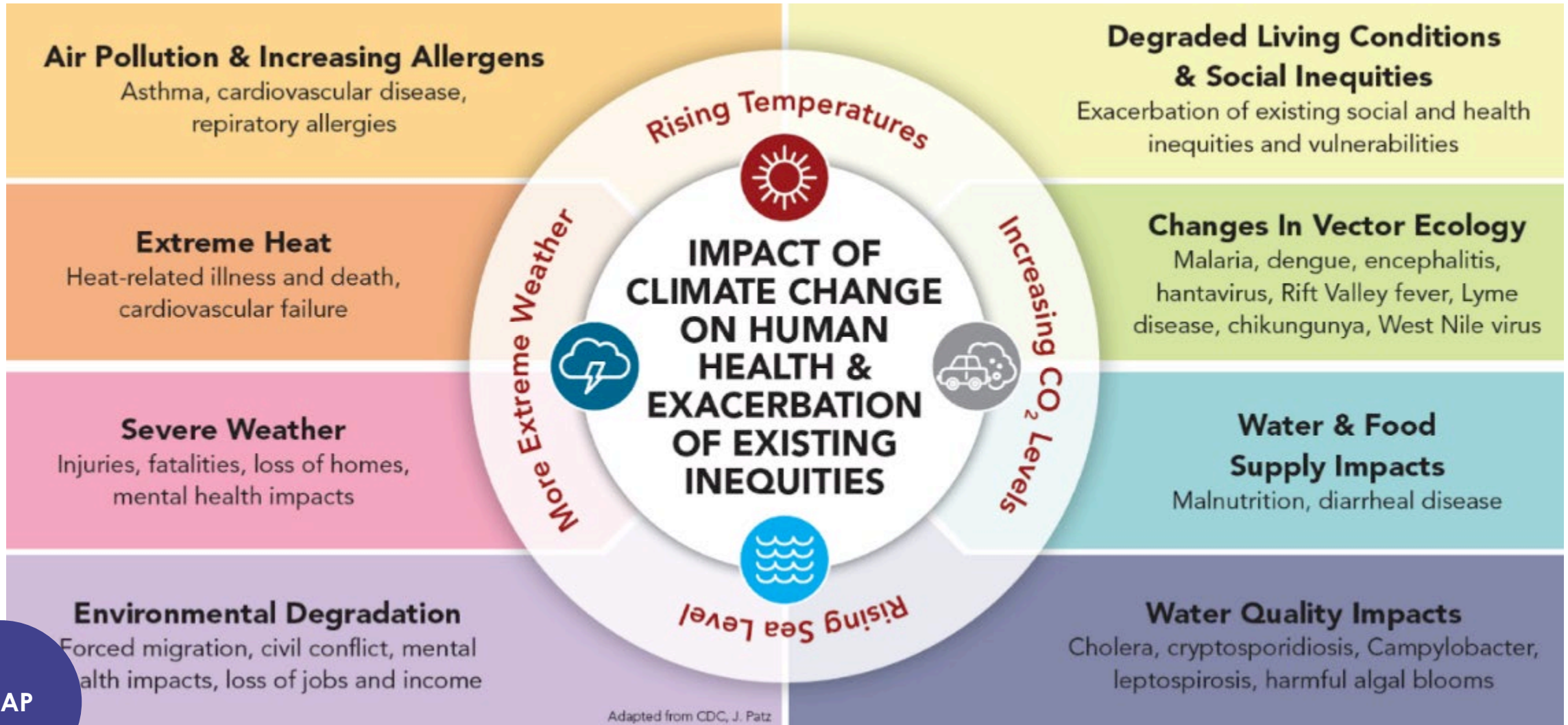




# Connections



# Sustainability and Climate Action Plan



SCAP

Figure 1. Impact of Climate Change on Human Health and Exacerbation of Existing Inequities (Adapted from CDC, J. Patz).

# System Effort and Goals

## CALIFORNIA COMMUNITY COLLEGES CLIMATE CHANGE AND SUSTAINABILITY EFFORTS AND GOALS

Category	Sub-Category			
Planning and Administration	<ul style="list-style-type: none"> <li>Justice, Equity, Diversity, and Inclusion</li> <li>Coordination and Planning</li> </ul>	<b>2022</b> (Benchmark)	<b>2025</b> (Build and Institutionalize)	<b>2030</b> (Improve and Reassess)
Academics	<ul style="list-style-type: none"> <li>Academic Infusion and Curriculum Integration</li> </ul>			
Engagement	<ul style="list-style-type: none"> <li>Campus Engagement</li> <li>Public Engagement</li> </ul>			
Operations	<ul style="list-style-type: none"> <li>Greenhouse Gas Emissions Reduction</li> <li>Green Buildings</li> <li>Energy</li> <li>Water</li> <li>Waste</li> <li>Purchasing and Procurement</li> <li>Transportation</li> <li>Food Systems</li> </ul>			

# Integrated Energy Master Plan

- a long-term strategy of achieving significant reductions in energy, water, greenhouse gas emissions.



IEMP

# AASHE Stars: Measuring Your Vision



*Remember those sub-committees? They were formed by the Stars framework!*

## Academic and Curriculum 58 Points

Curriculum  
Research

## Engagement 41 Points

Campus Engagement  
Public Engagement

## Operations 72 Points

Air and Climate  
Buildings  
Energy  
Food and Dining  
Grounds  
Purchasing  
Transportation  
Waste  
Water

## Planning and Admin. 32 Points

Coordination and Planning  
Diversity and Affordability  
Investment and Finance  
Wellbeing and Work

## Innovation and Leadership 0.5 Points Each

Exemplary Practice and  
Innovation

STARS

# Total Cost of Ownership Model

SCAP

IEMP

Decision Making

Asset Decision  
Asset Annual Funding  
Asset Comprehensive Plan

Information Gathering

Asset Costing  
Asset Inspection  
Asset Performance

Foundation

Managed Assets & Asset Inventory  
Global Location Hierarchy  
Asset Classification

Integrity

Asset information sharing  
Asset Reporting  
Data Management & Verification

TCO Principles that provide a comprehensive approach to balance both the financial management and facilities management of an organization

TCO

# 02

## Questions for you!

# Questions

- When it comes to your **College's sustainability journey...**
  - Share past **successes and challenges...**
  - What should we be **focusing** on, or what is **most important** for us to know?
- What **excites** you about this process?



# 03

## Next Steps

# Creating a Sustainability Framework

## PROBLEM

Clients want more than a rating system checklist

## SOLUTION

DLR Group created a framework that goes beyond a checklist and connects user experience to goals.



# Comprehensive Sustainability Language



Decarbonization:  
Transportation  
Multi-Modal  
Transportation  
Walkability and Safety

**ACCESS + MOBILITY**

How can your project advocate and celebrate transit-oriented design, connections between transit hubs, and walkable communities?



Community Access  
Community Partnerships  
Neighborhood Vitality  
Transparency:  
Decision-Making

**COMMUNITY CONNECTOR**

How can your project support its surrounding community, build community partnerships, and connect residents to shared resources?



Beauty & Inspiration  
Historical Context of Place  
Inclusion  
Individual vs. Collective  
Placemaking  
Multi-Cultural Relevance  
Organizational  
Transformation

**CULTURE + IDENTITY**

How can your project celebrate its history and cultural context to develop a strong sense of place that speaks to the identities of occupants and surrounding communities?



Building Ecology  
Decarbonization:  
Sequestration  
Ecosystem Services  
Public Space  
Site Ecology

**OUTDOOR ENVIRONMENTAL QUALITY**

How can your project's outdoor spaces restore ecology, build community, and create a strong sense of place?



Climate Justice  
Economic Development  
Programming  
Equitable Development  
Siting  
Equity  
Land Use  
Social Justice

**EQUITABLE DEVELOPMENT**

How can your project promote affordability, provide access to opportunity, and advocate for those in need?



Active Spaces  
Biophilia  
Evidence-Based  
Modalities  
Nourishment  
Play

**HEALTH + WELL-BEING**

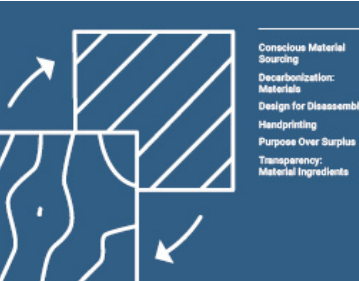
How can intentional design features actively promote users' emotional and physical well-being and encourage them to make healthier choices?



Acoustic Comfort  
Air Quality  
Thermal Comfort  
Visual Comfort

**INDOOR ENVIRONMENTAL QUALITY**

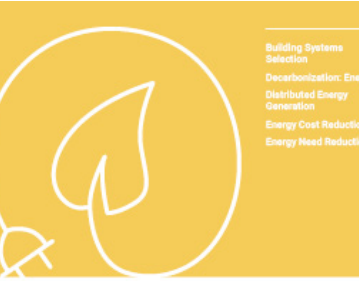
How can your project support user comfort and productivity?



Conscious Material  
Sourcing  
Decarbonization:  
Materials  
Design for Disassembly  
Handprinting  
Purpose Over Surplus  
Transparency:  
Material Ingredients

**MATERIALS IMPACT**

How do your materials choices support healthy ecology, communities, and economies?



Building Systems  
Selection  
Decarbonization: Energy  
Distributed Energy  
Generation  
Energy Cost Reduction  
Energy Need Reduction

**ENERGY**

How can changes in energy infrastructure support your broader mission, reduce costs, and build a healthier planet?



Building Resiliency  
Community Resiliency  
Economic Resiliency  
Emergency Planning  
Emotional Resiliency  
Risk Adaptation & Mitigation

**RESILIENCY**

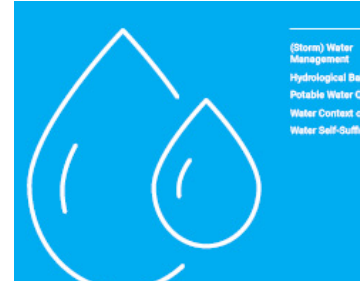
How can your project help its users and community adapt to and recover from unexpected situations?



Conscious Cleaning & Upkeep  
Goods & Supplies  
Operational Optimization  
Regulatory Partnerships  
Safety & Security  
Transparency: Building  
Performance  
Waste

**PROCUREMENT + OPERATIONS**

How can procurement, building operations, and management practices support your broader project goals?



(Storm) Water  
Management  
Hydrological Balance  
Potable Water Quality  
Water Context of Place  
Water Self-Sufficiency

**WATER**

What connections to water are important to your users and neighboring communities?

Viewing **Architecture** through the **Lens** of **User Experience** & **Sustainability**

# Prioritizing your VALUES at your College

## Moreno Valley College

- Resources Council
- Sustainability Task Force
- Associated Students

### VALUES

Take 5 minutes to familiarize yourself with the VALUES cards. Use the icons to share if a card resonates or does not for the Stripe User Experience and Sustainability Goals.



FACILITIES

LINDSEY'S GROUP



### VALUES

Using the cards that resonated with the group in this step we will spend time prioritizing. Now imagine you were investing budget in 6 improvements that would connect Sustainability to User Experience. Which VALUE would have the most impact for your investment?

