
Meeting Minutes



1650 Spruce Street, Suite 300
Riverside, CA 92507

Meeting Date	04.25.2022
To	Hussain Agah, Mehran Mohtasham, Myra Nava
From	DLR Group
Location	via ZOOM
Project	RCCD: Sustainability and Climate Action Plan / IEMP / TCO
Project No.	N/A
Attendees	Prem Sundharam, RCC SASLC
Purpose	Riverside City College SASLC Meeting – Sustainability and Climate Action Plan Update

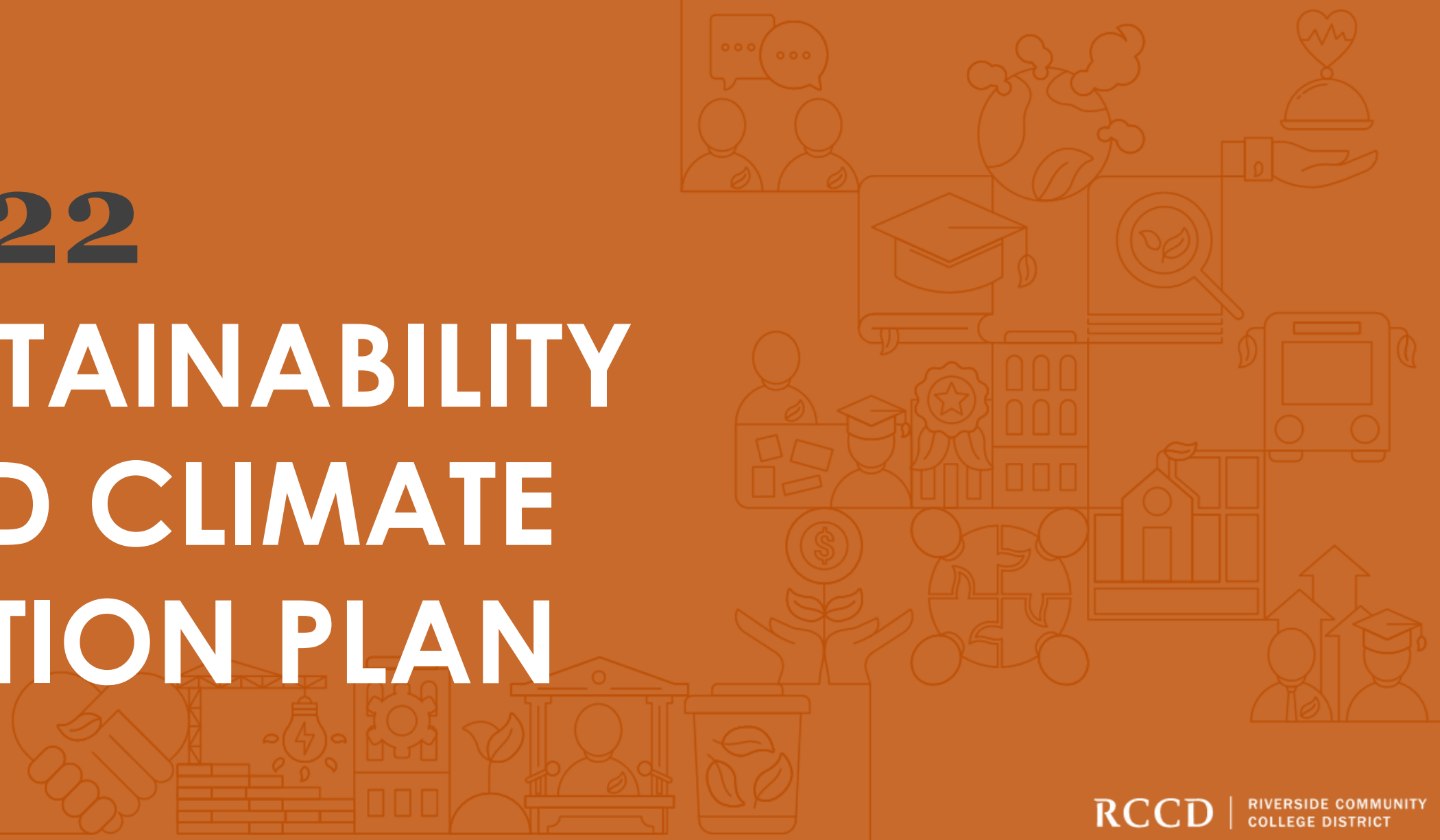
Minutes:

- Attached slides were used to drive conversation. Bold steps for each impact area were discussed and attendees were asked of where they would start/focus first as a campus student community.

Discussion:

1. Waste and Procurement
 - a. An effort regarding durable goods is already in place – career closet accepts donations of professional items that can then be availed by students for job interviews etc.
 - b. In addition, there is a food pantry in the Resource center.
 - c. An opportunity to engage with the dining staff and promote composters. The attendees acknowledged that such an effort needs to be planned well and were informed that the district wide sustainability committee, which has representatives from RCC, will enable such a plan.
 - d. Hazardous and e-waste could be another opportunity to start focusing on.
2. Eco-systems and Water
 - a. A priority to practice ecological landscape management could be a first step.
3. Health and Well-being
 - a. Students are surveyed out, so additional surveys toward baseline for health and well-being needs to be thought through and planned well.
 - b. It was acknowledged that the COVID pandemic relief money provided from the State has largely been allocated to technology and getting access to learning and not toward health. A priority toward student health is an opportunity to start focusing on.
 - c. Leveraging outdoor spaces for wellness could be an easy first step.
 - d. Food insecurity challenges are real, and one opportunity could be to improve the existing program with access to produce, perhaps with the aid of refrigeration.
4. Academics
 - a. Welcome center is already leveraged as a living lab – further opportunities to include sustainability action plan items will be explored.
 - b. Currently, RCC is involved in [IREX](#) – a global development and education organization focusing on connecting sustainability to curriculum based on the UN Sustainable development goals.
5. Engagement
 - a. Opportunities to leverage SCAP impact areas and bold steps were acknowledged by the Outreach Coordinator.

2022 SUSTAINABILITY AND CLIMATE ACTION PLAN



Scope and Deliverables



SCAP

Sustainability and Climate Action Plan

Establish an implementable roadmap towards holistic sustainability goals which sets RCCD up as a leader in addressing Environmental Stewardship and Climate Change.



IEMP

Integrated Energy Master Plan

Establish an implementable roadmap towards Carbon Neutrality at each campus.



TCO

Total Cost of Ownership Model

Develop a framework for cost-effective decision-making that identifies human and capital resources needed to address goals of the SCAP and IEMP.



STARS

AASHE Stars Report

Establish a roadmap toward peer group recognition of your sustainability efforts. AASHE Stars is a third-party reporting framework connecting sustainability in the built environment and academics.

Our Project Schedule

*Board Approval –
Fall 2022*

**Project Complete
May 31, 2023**

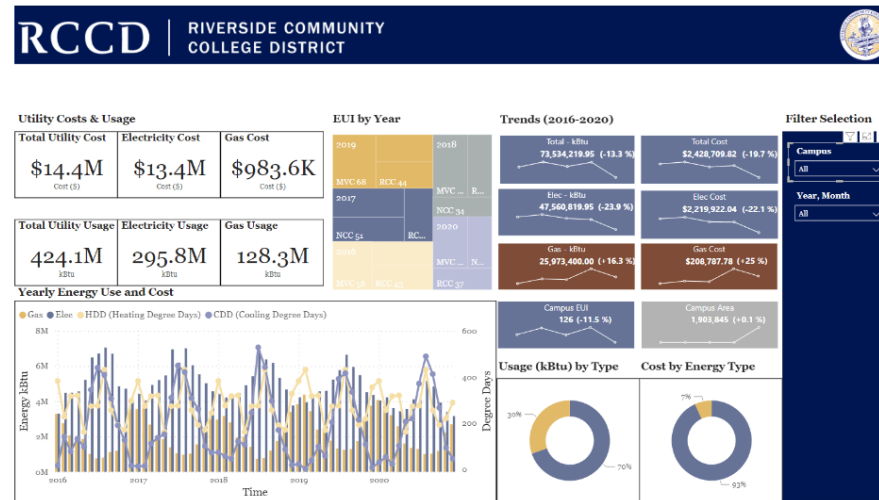
	2021							2022					
	Jun.	Jul.	Aug.	Sep.	Oct.	Nov.	Dec.	Jan.	Feb.	Mar.	Apr.	May	Jun.
TASKS	TASK 1: Project Initiation			TASK 2: Research and Analysis			TASK 3: Implementation Phase						TASK 4: Verification and Monitoring
SCAP	Project Initiation			VALUES and Vision		Prioritization and Goals			Action Plan and Implementation			Final Plan	
IEMP				Campus Building Profiles	Energy Audits	Recommend ECMs			ECMs Finalized	Dashboard	Draft Plan	Final Plan	Final Approvals
TCO				Identify Assets	Classify Assets	Decision Criteria	Funding Analysis		Costing Assets	Asset Decisions		Comprehensive Asset Plan	Final Approvals
STARS													
Committee Workshop			Kick-Off Meeting	VALUES	Listening / Deep-Dives	Baselines		Goal Setting		Action Plan	Draft Plan	Final Plan	Final Approvals
Campus Work			President's Kick-off	VALUES	Open Houses	Campus Updates	-	-	College Action Plan		Draft Plan		Final Approvals
Deliverable Due													

We are here.

Project Updates



AASHE Membership!



Dashboard Mania

**SoCal Edison
SoCal Gas
RPU**

Partnerships

Review

Sustainability and Climate Action Plan Framework

SCAP FRAMEWORK: Organizing the Topics

Included

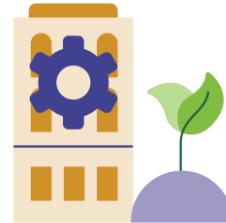
Includes the creation of goals and metrics within the S-CAP



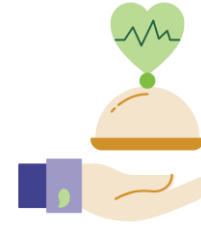
Decarbonization and Climate Justice



Waste / Procurement



Eco-systems / Water



Health and Well-being



Resiliency

Influenced

Would be included in an update with a sustainability lens / new plan



Academics



Engagement



Trust and Transparency

Reinforced

Planning and metrics already exist in other plans



Community Partnerships



Equity and Social Justice

Topics AND OTHER FRAMEWORKS

Innovation and Leadership (ALL)

Your Top Topics

CCCCO

AASHE Stars



Decarbonization, Energy Use, and Climate Justice



Waste / Procurement



Water Eco-systems



Health and Well-being



Resiliency



Academics



Engagement



Community Partnerships



Trust and Transparency



Equity and Social Justice

Operations

Operations

Gap

Gap

Academics

Academic and Curriculum

Engagement

Engagement

Planning and Administration

Planning and Administration

Topic Area

TOPIC AREAS are the top **VALUES** as created collectively by the District and Colleges.



Decarbonization and
Climate Justice



Waste /
Procurement



Eco-systems /
Water



Health and
Well-being



Resiliency



Academics



Engagement



Trust and
Transparency



Community
Partnerships



Equity and Social
Justice

Topic Area

TOPICS AREAS are the top VALUES as created collectively by the District and Colleges.

Goal or Desired Outcome

GOALS AND OUTCOMES establish aspirational thinking that the District and Colleges will work toward. These were established by cross-referencing System and Stars frameworks with Impact Areas.

ACTIONS are the initiatives that it will take to get meet your goal / outcome

Actions (per objective)

Objectives

OBJECTIVES outline measurable actions were established by from District and Campus engagement, System mandates, and HiEd best practices.

Measures

MEASURES align with the objectives to manage what success will look.

Metrics

METRICS outline how the objective will be measured based on the data available or data required.

Milestones

MILESTONES represent the timeline associated with each objective. These outline short-, mid-, and long-term strategies.

Five Dimensions of Resiliency

RESILIENCY overlays risk-management and the five dimensions of resiliency (Ecosystem, Financial, Human Health, Infrastructure, Social) into each Topic Area

- By District
- By College

Let's Dive In!

More Detail on the
Topic Areas

SCAP FRAMEWORK: Organizing the Topics

Included

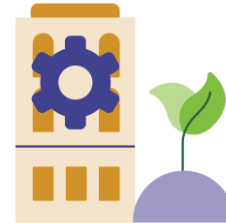
Includes the creation of goals and metrics within the S-CAP



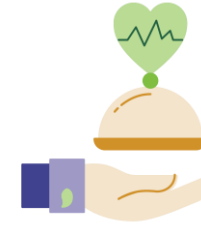
Decarbonization and Climate Justice



Waste / Procurement



Eco-systems / Water



Health and Well-being



Resiliency

Influenced

Would be included in an update with a sustainability lens / new plan



Academics



Engagement



Trust and Transparency

Reinforced

Planning and metrics already exist in other plans



Community Partnerships



Equity and Social Justice

Waste and Procurement

Goal: Achieve zero waste to landfill.

Objectives, and Bold Steps

Recyclables and Waste Minimization

**Increase diversion rates for non-construction waste.
Reduce the total weight of non-construction waste.**

BOLD STEPS: Conduct Waste Categorization Assessment;
Conduct total material consumption benchmark

Construction Waste

Increase construction waste diversion rate from landfill.

BOLD STEPS: Set stricter requirements for contractors that align with the District's sustainability goals

Organic Waste

Increase diversion of dining and landscape wastes from landfill.

BOLD STEPS: Establish an organic waste diversion program in primary dining location

Hazardous Waste and E-Waste

Create programs and systems for hazardous and e-waste.

BOLD STEPS: Benchmark programs that dispose of all hazardous, universal, and non-regulated chemical waste

Durable Goods

Increase opportunities to share and donate durable goods.

BOLD STEPS: Establish a comprehensive durable goods sharing/donation program

Waste and Procurement

Goal: Achieve zero waste to landfill.

Objectives, and Bold Steps

Procurement

Increase sustainable purchasing.

BOLD STEP: Work with procurement to inventory the districts and each colleges 'environmentally preferable purchases for highly used items in alignment with State procurement best practices.

Eco-Systems and Water

Goal: Substantially increase water-use efficiency.

Objectives, and Bold Steps

Decrease water-use (potable and non-potable water)

BOLD STEP: Through sub-metering and other irrigation control systems, identify water usage for each building and landscape irrigation systems of 2,500 sf or greater.

Goal: Improve stormwater quality.

Objectives, and Bold Steps

Prevent stormwater pollution and raise awareness.

BOLD STEP: Adopt the CCC Model Stormwater Management Program, meeting Minimum Control Measures (MCMs)

- *MCM 01: Education and Outreach on Storm Water Issues*
- *MCM 02: Campus Community Involvement and Participation*
- *MCM 03: Illicit Discharge Detection and Elimination*
- *MCM 04: Construction Site Storm Water Runoff Control*
- *MCM 05: Post Construction Storm Water Management in New Development and Development*
- *MCM 06: Pollution Prevention and Good Housekeeping for Facilities Maintenance and Operation*

Eco-Systems and Water

Goal: Enhance biodiversity through Land Management

Objectives, and Bold Steps

Practice ecological landscape management.

Rewild undeveloped areas

BOLD STEP: Develop an Integrated Pest Management Program

BOLD STEP: Perform a biodiversity survey

Health and Well-being

Goal: Create a culture of health and well-being for Riverside Community College District.

Objectives, and Bold Steps

Employee Programs

Provide comprehensive employee wellness initiatives and education encompassing physical, mental and spiritual health.

BOLD STEP: Create employee satisfaction survey based on a selected framework on health and well-being for employees.

Student Programs

Provide comprehensive student wellness programs and education encompassing physical, mental and spiritual health.

BOLD STEPS: Create student health and well-being satisfaction survey based on existing health and well-being frameworks.

Physical Space

Increase the amount of indoor and outdoor space available to the RCCD community dedicated to supporting wellness.

- Campus community gardens
- Improved outdoor spaces for physical activity including walking trails.
- Improved outdoor spaces for education or breaks.

Real Food Commitment

Address food insecurity and healthy food education across Riverside Community College District..

BOLD STEP: Sign the Real Food Campus Commitment and follow the required tasks outlined for the first 12 months, studying food supply and education on healthy foods.

SCAP FRAMEWORK: Organizing the VALUES

Included

Includes the creation of goals and metrics within the S-CAP



Decarbonization and Climate Justice



Waste / Procurement



Eco-systems / Water



Health and Well-being



Resiliency

Influenced

Would be included in an update with a sustainability lens / new plan



Academics



Engagement



Trust and Transparency

Reinforced

Planning and metrics already exist in other plans



Community Partnerships



Equity and Social Justice



Goal: Increase sustainability literacy on campus and community.

In alignment with future planning, partnership with Faculty Senate and Academic Leaders

Courses

Increase availability of academic courses on or related to sustainability.

BOLD STEP: Conduct an inventory to identify sustainability course offerings

Learning Outcomes

Increase the percentage of students who take a course with a sustainability learning outcome.

BOLD STEP: Conduct an inventory to identify sustainability learning outcomes and how many students are enrolled within these courses

Campus as a Living Lab

Implement Opportunities to use the Campuses as Living Labs.

BOLD STEP: Create college task forces to brainstorm, plan, and implement short-term solutions for using the campus as a teaching tool

Degree Programs

Offer degree programs focused on sustainability. (AA, AS)

BOLD STEP: Form a working group for curriculum development across disciplines and course articulation with University partner institutions

Engagement



The long-term vision is to connect your campus and community outreach to your sustainability goals.

Goal: Expand the RCCD community's knowledge of sustainability to be inclusive of social, economic, and environmental factors while promoting resource conservation and socially just behaviors.

In alignment with future planning for community and campus outreach

Campus Outreach

Increase the number of opportunities for campus stakeholders to be exposed to sustainability

BOLD STEP: Set up campus sustainability websites

Increase Sustainability Literacy for Campus Users

BOLD STEP: Conduct a Sustainability Literacy Assessment per AASHE Stars guidelines

Community Outreach

Establish opportunities for RCCD to collaborate in the community

BOLD STEP: Establish a formal campus/district/community partnership to advance sustainability

Thanks, Questions?