

Meeting Minutes



| | | |
|--------------|--|--|
| Meeting Date | 04.06.2022 | |
| To | Hussain Agah, Mehran Mohtasham, Myra Nava | 1650 Spruce Street, Suite 300 Riverside, CA 92507 |
| From | DLR Group | |
| Location | via ZOOM | |
| Project | RCCD: Sustainability and Climate Action Plan / IEMP / TCO | |
| Project No. | N/A | |
| Attendees | Mehran Mohtasham, Linsey Graff, Lindsey Perez, Hussain Agah, Dr. Gregory Anderson, Dr. Lynn Wright, Dr. Raymond West, Dr. Kristine DiMemmo, Dr. FeRita Carter. | |
| Purpose | Riverside City College PLT Meeting – Sustainability and Climate Action Plan Update | |

Minutes:

- All attendees saw the slide deck at the Academic Senate update. The slides were used to drive conversation and are attached as reference.

Discussion:

1. Academics

- a. RCC has already created a degree program. Is there any feedback on how RCC would like to take it further compared to the other colleges?
 - i. Vetting this into our curriculum is completely faculty / Academic Senate vs. PLT would be more about connecting how environmental justice/social justice has an impact of population they are trying to serve (Administration has a greater ability to impact the Engagement Impact Area vs. Academic).
 1. Administration would be able to connect other initiatives across the college back to the overlap with sustainability.
 - ii. Defer academic ties to the curriculum committee and chair – they have criteria that allow them to add to be able to encourage sustainability lens in course and learning outcomes.

2. Engagement

- a. Anything to add around Campus Outreach this group would like to see in terms of this impact area?
 - i. What is a broad perspective (events) vs. deep perspective (sustainability literacy)?
 1. ASRRCC
 2. Engagement Centers
 3. Job Fairs - what are things we are doing to place these students and ask what employers are wanting of their students around sustainability.
 - ii. District Level to have a new Sustainability website
 1. RCC could also consider having a sustainability page
 - a. Administration believes the design of the page needs to be student centric and what is the student's experience and what is their role in SCAP.

3. Equity and Social Justice

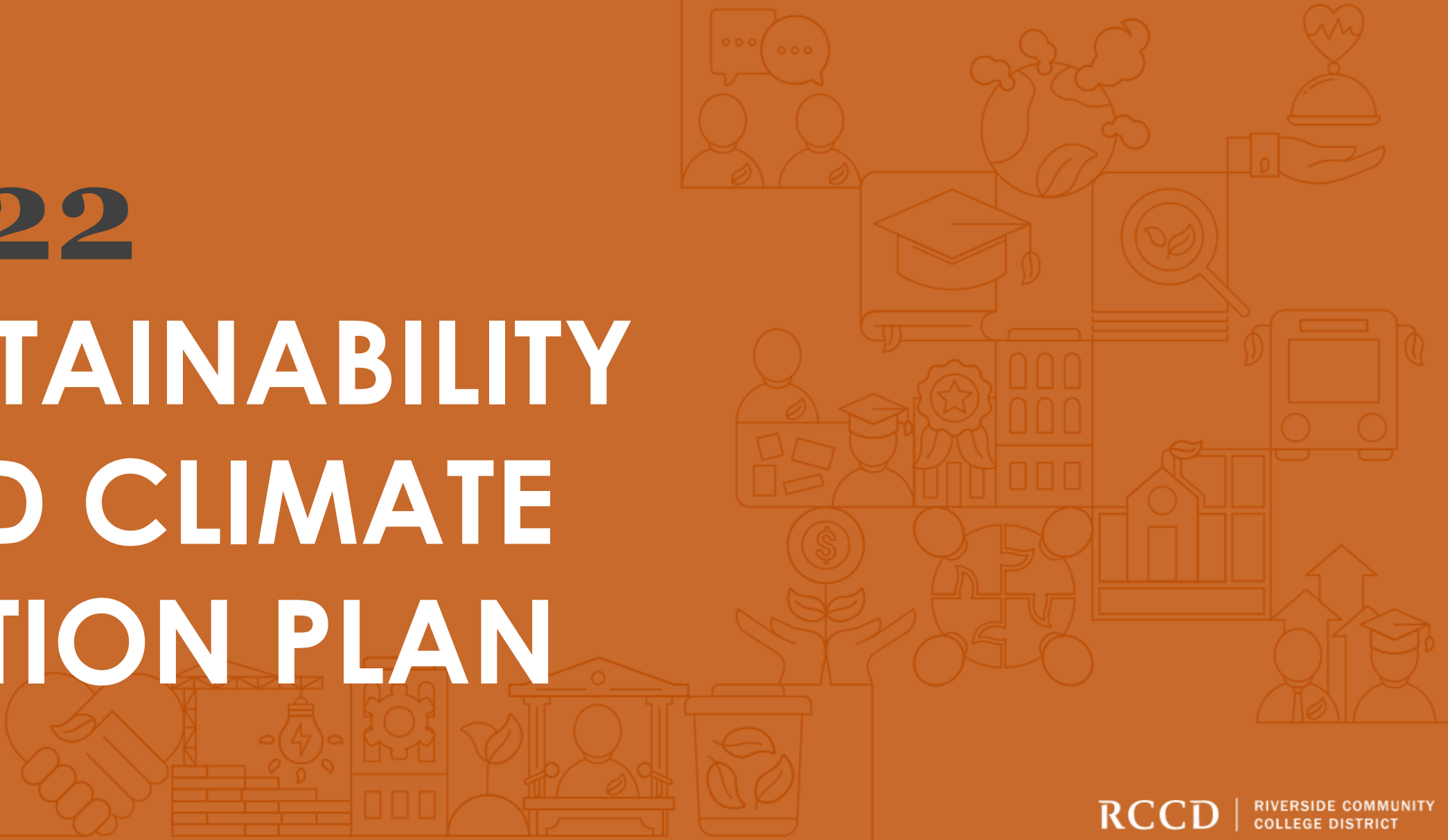
- a. One of our next steps is to meet with each of the college's equity committees
 - i. More to ask what is already being done and how can sustainability connect the dots to the work already being done.

4. Trust and Transparency

- a. How to use the Shared Governance process to help share the good work of the implementation of the plan?

2022

SUSTAINABILITY AND CLIMATE ACTION PLAN



Scope and Deliverables



SCAP

Sustainability and Climate Action Plan

Establish an implementable roadmap towards holistic sustainability goals which sets RCCD up as a leader in addressing Environmental Stewardship and Climate Change.



IEMP

Integrated Energy Master Plan

Establish an implementable roadmap towards Carbon Neutrality at each campus.



TCO

Total Cost of Ownership Model

Develop a framework for cost-effective decision-making that identifies human and capital resources needed to address goals of the SCAP and IEMP.



STARS

AASHE Stars Report

Establish a roadmap toward peer group recognition of your sustainability efforts. AASHE Stars is a third-party reporting framework connecting sustainability in the built environment and academics.

Our Project Schedule

*Board Approval –
Fall 2022*

**Project Complete
May 31, 2023**

| | 2021 | | | | | | | 2022 | | | | | |
|--------------------|-------------------------------|------|----------------------|----------------------------------|------------------------|--------------------------|---------------------------------|--------------|--------------------------------|-----------------|------------|--------------------------|--|
| | Jun. | Jul. | Aug. | Sep. | Oct. | Nov. | Dec. | Jan. | Feb. | Mar. | Apr. | May | Jun. |
| TASKS | TASK 1: Project Initiation | | | TASK 2: Research and Analysis | | | TASK 3: Implementation Phase | | | | | | TASK 4: Verification and Monitoring |
| SCAP | Project Initiation | | | VALUES and Vision | | Prioritization and Goals | | | Action Plan and Implementation | | | Final Plan | |
| IEMP | | | | Campus Building Profiles | Energy Audits | Recommend ECMs | | | ECMs Finalized | Dashboard | Draft Plan | Final Plan | Final Approvals |
| TCO | | | | Identify Assets | Classify Assets | Decision Criteria | Funding Analysis | | Costing Assets | Asset Decisions | | Comprehensive Asset Plan | Final Approvals |
| STARS | | | | | | | | | | | | | |
| Committee Workshop | | | Kick-Off Meeting | VALUES | Listening / Deep-Dives | Baselines | | Goal Setting | | Action Plan | Draft Plan | Final Plan | Final Approvals |
| Campus Work | | | President's Kick-off | VALUES | Open Houses | Campus Updates | - | - | College Action Plan | | Draft Plan | | Final Approvals |
| Deliverable Due | | | | | | | | | | | | | |

We are here.

Project Updates



AASHE Membership!



Dashboard Mania

**SCE
SOCAL GAS
FPPS**

Partnerships

Review

Our Planning Framework

OUR PLANNING FRAMEWORK: Organizing the VALUES (Our Why)

Included

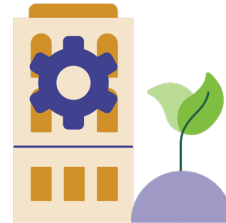
Includes the creation of goals and metrics within the S-CAP



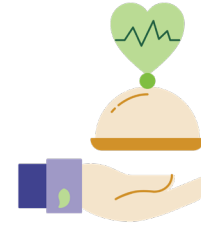
Decarbonization and Climate Justice



Waste / Procurement



Eco-systems / Water



Health and Well-being



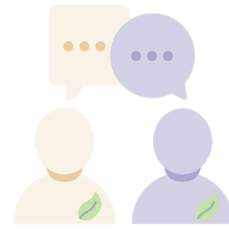
Resiliency

Influenced

Would be included in an update with a sustainability lens / new plan



Academics



Engagement



Trust and Transparency

Reinforced

Planning and metrics already exist in other plans



Community Partnerships



Equity and Social Justice

VALUES AND OTHER FRAMEWORKS

Innovation and Leadership (ALL)


Your Top VALUES


CCCCO

AASHE Stars

 Decarbonization, Energy Use, and Climate Justice

 Waste / Procurement

 Water Eco-systems


 Health and Well-being

 Resiliency

 Academics

 Engagement

 Community Partnerships

 Trust and Transparency

 Equity and Social Justice

Operations

Gap

Academics

Engagement

Planning and Administration

Operations

Gap

Academic and Curriculum

Engagement

Planning and Administration

Impact Area

IMPACT AREAS are the top **VALUES** as created collectively by the District and Colleges.



Decarbonization and Climate Justice



Waste / Procurement



Eco-systems / Water



Health and Well-being



Resiliency



Academics



Engagement



Trust and Transparency



Community Partnerships



Equity and Social Justice

Impact Area

IMPACT AREAS are the top VALUES as created collectively by the District and Colleges.

ACTIONS are the initiatives that it will take to get meet your goal / outcome

Goal or Desired Outcome

GOALS AND OUTCOMES establish aspirational thinking that the District and Colleges will work toward. These were established by cross-referencing System and Stars frameworks with Impact Areas.

Actions (per objective)

Objectives

OBJECTIVES outline measurable actions were established by from District and Campus engagement, System mandates, and HiEd best practices.

Measures

MEASURES align with the objectives to manage what success will look.

Metrics

METRICS outline how the objective will be measured based on the data available or data required.

Milestones

MILESTONES represent the timeline associated with each objective. These outline short-, mid-, and long-term strategies.

Five Dimensions of Resiliency

RESILIENCY overlays risk-management and the five dimensions of resiliency (Ecosystem, Financial, Human Health, Infrastructure, Social) into each Impact Area

- By District
- By College

Let's Dive In!

Discuss Impact Areas

OUR PLANNING FRAMEWORK: Organizing the VALUES (Our Why)

Included

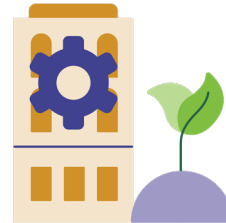
Includes the creation of goals and metrics within the S-CAP



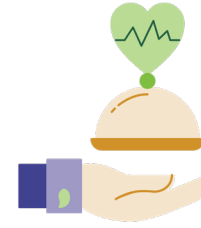
Decarbonization and Climate Justice



Waste / Procurement



Eco-systems / Water



Health and Well-being



Resiliency

Influenced

Would be included in an update with a sustainability lens / new plan



Academics



Engagement



Trust and Transparency

Reinforced

Planning and metrics already exist in other plans



Community Partnerships



Equity and Social Justice

Waste

Goal: Achieve zero waste to landfill by 2025.

Objectives, and Bold Steps

Recyclables and Waste Minimization

**Increase diversion rates for non-construction waste.
Reduce the total weight of non-construction waste.**

BOLD STEPS: Conduct Waste Categorization Assessment;
Conduct total material consumption benchmark

Construction Waste

Increase construction waste diversion rate from landfill.

BOLD STEPS: Set stricter requirements for contractors that align with the District's sustainability goals

Organic Waste

Increase diversion of dining and landscape wastes from landfill.

BOLD STEPS: Establish an organic waste diversion program in primary dining location

Hazardous Waste and E-Waste

Create programs and systems for hazardous and e-waste.

BOLD STEPS: Benchmark programs that dispose of all hazardous, universal, and non-regulated chemical waste

Durable Goods

Increase opportunities to share and donate durable goods.

BOLD STEPS: Establish a comprehensive durable goods sharing/donation program

Waste

Goal: Achieve zero waste to landfill by 2025.

Objectives, and Bold Steps

Procurement

Increase sustainable purchasing.

BOLD STEP: Work with procurement to inventory the districts and each colleges 'environmentally preferable purchases for highly used items in alignment with State procurement best practices.

Eco-Systems and Water

Goal: Substantially increase water-use efficiency.

Objectives, and Bold Steps

Decrease water-use (potable and non-potable water)

BOLD STEP: Through sub-metering and other irrigation control systems, identify water usage for each building and landscape irrigation systems of 2,500 sf or greater.

Goal: Improve stormwater quality.

Objectives, and Bold Steps

Prevent stormwater pollution and raise awareness.

BOLD STEP: Adopt the CCC Model Stormwater Management Program, meeting Minimum Control Measures (MCMs)

- *MCM 01: Education and Outreach on Storm Water Issues*
- *MCM 02: Campus Community Involvement and Participation*
- *MCM 03: Illicit Discharge Detection and Elimination*
- *MCM 04: Construction Site Storm Water Runoff Control*
- *MCM 05: Post Construction Storm Water Management in New Development and Development*
- *MCM 06: Pollution Prevention and Good Housekeeping for Facilities Maintenance and Operation*

Eco-Systems and Water

Goal: Enhance biodiversity through Land Management

Objectives, and Bold Steps

Practice ecological landscape management.

Rewild undeveloped areas

BOLD STEP: Develop an Integrated Pest Management Program

BOLD STEP: Perform a biodiversity survey

Health and Well-being

Goal: Create a culture of health and well-being for Riverside Community College District.

Objectives, and Bold Steps

Employee Programs

Provide comprehensive employee wellness initiatives and education encompassing physical, mental and spiritual health.

BOLD STEP: Create employee satisfaction survey based on a selected framework on health and well-being for employees.

Student Programs

Provide comprehensive student wellness programs and education encompassing physical, mental and spiritual health.

BOLD STEPS: Create student health and well-being satisfaction survey based on existing health and well-being frameworks.

Physical Space

Increase the amount of indoor and outdoor space available to the RCCD community dedicated to supporting wellness.

- Campus community gardens
- Improved outdoor spaces for physical activity including walking trails.
- Improved outdoor spaces for education or breaks.
- Continuous monitoring of Indoor/ Outdoor Environmental Quality at each college to better understand air quality, acoustic comfort, traffic impact, weather, etc.
- Healthy Campus Framework

OUR PLANNING FRAMEWORK: Organizing the VALUES (Our Why)

Included

Includes the creation of goals and metrics within the S-CAP



Decarbonization and Climate Justice



Waste / Procurement



Eco-systems / Water



Health and Well-being



Resiliency

Influenced

Would be included in an update with a sustainability lens / new plan



Academics



Engagement



Trust and Transparency

Reinforced

Planning and metrics already exist in other plans



Community Partnerships



Equity and Social Justice



Goal: Increase sustainability literacy on campus and community.

In alignment with future planning, partnership with Faculty Senate and Academic Leaders

Courses

Increase availability of academic courses on or related to sustainability.

BOLD STEP: Conduct an inventory to identify sustainability course offerings

Learning Outcomes

Increase the percentage of students who take a course with a sustainability learning outcome.

BOLD STEP: Conduct an inventory to identify sustainability learning outcomes and how many students are enrolled within these courses

Campus as a Living Lab

Implement Opportunities to use the Campuses as Living Labs.

BOLD STEP: Create college task forces to brainstorm, plan, and implement short-term solutions for using the campus as a teaching tool

Degree Programs

Offer degree programs focused on sustainability. (AA, AS)

BOLD STEP: Form a working group for curriculum development across disciplines and course articulation with University partner institutions

Engagement



The long-term vision is to connect your campus and community outreach to your sustainability goals.

Goal: Expand the RCCD community's knowledge of sustainability to be inclusive of social, economic, and environmental factors while promoting resource conservation and socially just behaviors.

In alignment with future planning for community and campus outreach

Campus Outreach

Increase the number of opportunities for campus stakeholders to be exposed to sustainability

BOLD STEP: Set up campus sustainability websites

Increase Sustainability Literacy for Campus Users

BOLD STEP: Conduct a Sustainability Literacy Assessment per AASHE Stars guidelines

Community Outreach

Establish opportunities for RCCD to collaborate in the community

BOLD STEP: Establish a formal campus/district/community partnership to advance sustainability

Thanks, Questions?