

---

# Meeting Minutes

---



Architecture Engineering Planning Interiors

1650 Spruce Street, Suite 300  
Riverside, CA 92507

Meeting Date	03.23.2022
To	Hussain Agah, Mehran Mohtasham, Myra Nava
From	DLR Group
Location	via ZOOM
Project	RCCD: Sustainability and Climate Action Plan
Project No.	N/A
Attendees	Linsey Graft, Monica Green, Kaneesha Tarrant, Dr. Kevin Fleming, Mehran Mohtasham, Samuel Lee, DR. Michael Collins, Lindsey Perez
Purpose	Norco President's Cabinet Kickoff Meeting

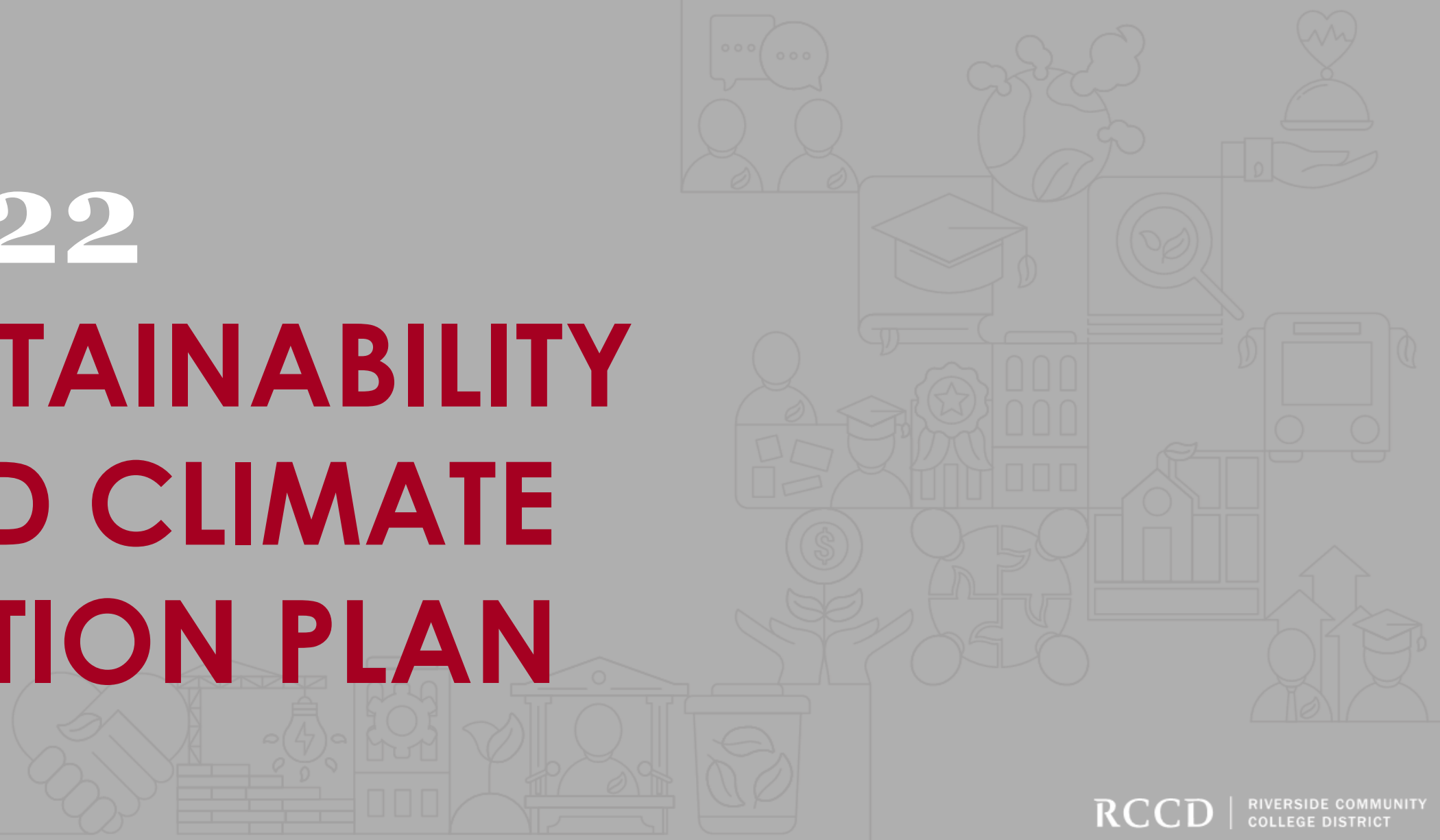
---

## Minutes:

1. Slides Shared (see attached)
2. Discussion of Two Impact Areas
  - a. Academics
    - i. Discussion of Goals and Objectives
      1. Feasibility of academic goals around sustainability needs further discussion, especially with Academic Senate.
      2. Goals and Objectives in the draft are drawn from AASHE Stars and DLR Group should provide more information on how that framework accounts for sustainability in academics.
        - a. Environmental, social and economic sustainability
        - b. DLR Group will review this Impact area and the AASHE framework's academic reporting criteria. Goals need to better align back to Educational Masterplan.
      3. Any review of these goals and objectives must have a DRAFT watermark until full review and adoption.
    - . Health and Well-being
      - i. In lieu of programs to replace with opportunities throughout the Health and Well-being section.
      - ii. How to edit the objectives, actions and milestones?

**2022**

**SUSTAINABILITY  
AND CLIMATE  
ACTION PLAN**



# Scope and Deliverables



SCAP

## Sustainability and Climate Action Plan

Establish an implementable roadmap towards holistic sustainability goals which sets RCCD up as a leader in addressing Environmental Stewardship and Climate Change.



IEMP

## Integrated Energy Master Plan

Establish an implementable roadmap towards Carbon Neutrality at each campus.



TCO

## Total Cost of Ownership Model

Develop a framework for cost-effective decision-making that identifies human and capital resources needed to address goals of the SCAP and IEMP.



STARS

## AASHE Stars Report

Establish a roadmap toward peer group recognition of your sustainability efforts. AASHE Stars is a third-party reporting framework connecting sustainability in the built environment and academics.

# Our Project Schedule

*Board Approval –  
Fall 2022*

**Project Complete  
May 31, 2023**

	2021							2022					
	Jun.	Jul.	Aug.	Sep.	Oct.	Nov.	Dec.	Jan.	Feb.	Mar.	Apr.	May	Jun.
TASKS	TASK 1: Project Initiation			TASK 2: Research and Analysis			TASK 3: Implementation Phase						TASK 4: Verification and Monitoring
SCAP	Project Initiation			VALUES and Vision		Prioritization and Goals			Action Plan and Implementation			Final Plan	
IEMP				Campus Building Profiles	Energy Audits	Recommend ECMs			ECMs Finalized	Dashboard	Draft Plan	Final Plan	Final Approvals
TCO				Identify Assets	Classify Assets	Decision Criteria	Funding Analysis		Costing Assets	Asset Decisions		Comprehensive Asset Plan	Final Approvals
STARS													
Committee Workshop			Kick-Off Meeting	VALUES	Listening / Deep-Dives	Baselines		Goal Setting		Action Plan	Draft Plan	Final Plan	Final Approvals
Campus Work			President's Kick-off	VALUES	Open Houses	Campus Updates	-	-	College Action Plan		Draft Plan		Final Approvals
Deliverable Due													

**We are here.**

# Norco College Sustainability Task Force

**To assist in further defining NC's priorities and goals, a task force is being formed.**

For the S-CAP, we will need the Sustainability Committee to attend:

- Kick-off Workshop - November
- Action and Implementation Report – March
- Draft Plan Review - first and second reads – April, May, and June

Once the plan is approved, that task force plan the implementation of the strategies on campus. This implementation will likely be ongoing for many years, as the S-CAP will identify short-mid-and long-term goals.

# Project Updates



AASHE Membership!



Dashboard Mania

**SCE  
SOCAL GAS  
FPPS**

Partnerships

**Review**

# Our Planning Framework

# OUR PLANNING FRAMEWORK: Organizing the VALUES (Our Why)

## Included

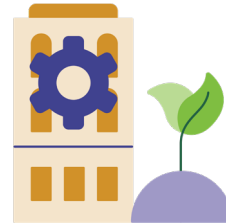
*Includes the creation of goals and metrics within the S-CAP*



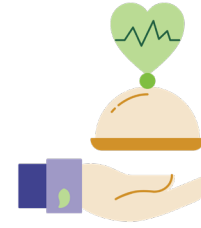
Decarbonization and Climate Justice



Waste / Procurement



Eco-systems / Water



Health and Well-being



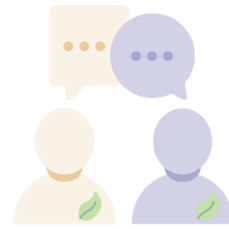
Resiliency

## Influenced

*Would be included in an update with a sustainability lens / new plan*



Academics



Engagement



Trust and Transparency

## Reinforced

*Planning and metrics already exist in other plans*



Community Partnerships



Equity and Social Justice




# VALUES AND OTHER FRAMEWORKS

Innovation and Leadership (ALL)


*Your Top VALUES*


CCCCO

*AASHE Stars*


 Decarbonization, Energy Use, and Climate Justice

 Waste / Procurement

 Water Eco-systems


 Health and Well-being

 Resiliency

 Academics

 Engagement

 Community Partnerships

 Trust and Transparency

 Equity and Social Justice

Operations

Gap

Academics

Engagement

Planning and Administration

Operations

Gap

Academic and Curriculum

Engagement

Planning and Administration

# Impact Area

**IMPACT AREAS** are the top **VALUES** as created collectively by the District and Colleges.



Decarbonization and Climate Justice



Waste / Procurement



Eco-systems / Water



Health and Well-being



Resiliency



Academics



Engagement



Trust and Transparency



Community Partnerships



Equity and Social Justice

Impact Area

**IMPACT AREAS** are the top VALUES as created collectively by the District and Colleges.

**ACTIONS** are the initiatives that it will take to get meet your goal / outcome

Goal or Desired Outcome

**GOALS AND OUTCOMES** establish long-term milestones that the District and Colleges will work toward. These were established by cross-referencing System and Stars frameworks with Impact Areas.

*Actions (per objective)*

Objectives

**OBJECTIVES** outline measurable actions were established by from District and Campus engagement, System mandates, and HiEd best practices.

Measures

**MEASURES** align with the objectives to manage what success will look.

Metrics

**METRICS** outline how the objective will be measured based on the data available or data required.

Milestones

**MILESTONES** represent the timeline associated with each objective. These outline short-, mid-, and long-term strategies.

Five Dimensions of Resiliency

**RESILIENCY** overlays risk-management and the five dimensions of resiliency (Ecosystem, Financial, Human Health, Infrastructure, Social) into each Impact Area

**Let's Dive In!**

Discuss Impact Areas

# OUR PLANNING FRAMEWORK: Organizing the VALUES (Our Why)

## Included

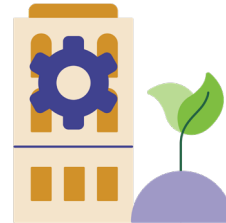
*Includes the creation of goals and metrics within the S-CAP*



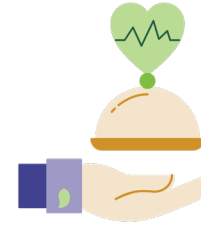
Decarbonization and Climate Justice



Waste / Procurement



Eco-systems / Water



Health and Well-being



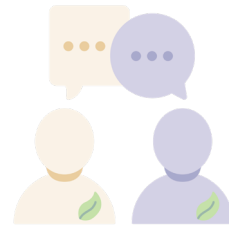
Resiliency

## Influenced

*Would be included in an update with a sustainability lens / new plan*



Academics



Engagement



Trust and Transparency

## Reinforced

*Planning and metrics already exist in other plans*



Community Partnerships



Equity and Social Justice

# Waste

**Goal: Achieve zero waste to landfill by 2025.**

*Objectives, and Bold Steps*

Recyclables and Waste Minimization

**Increase diversion rates for non-construction waste.  
Reduce the total weight of non-construction waste.**

**BOLD STEPS:** Conduct Waste Categorization Assessment;  
Conduct total material consumption benchmark

Construction Waste

**Increase construction waste diversion rate from landfill.**

**BOLD STEPS:** Set stricter requirements for contractors that align with the District's sustainability goals

Organic Waste

**Increase diversion of landscape wastes from landfill.**

**BOLD STEPS:** Establish an organic waste diversion program

Hazardous Waste and E-Waste

**Create programs and systems for hazardous and e-waste.**

**BOLD STEPS:** Benchmark programs that dispose of all hazardous, universal, and non-regulated chemical waste

Durable Goods

**Increase opportunities to share and donate durable goods.**

**BOLD STEPS:** Establish a comprehensive durable goods sharing/donation program

# Waste

**Goal: Achieve zero waste to landfill by 2025.**

*Objectives, and Bold Steps*

Procurement

**Increase sustainable purchasing.**

**BOLD STEP: Work with procurement to inventory the districts and each colleges sustainable purchases**

# Eco-Systems and Water

**Goal: Substantially increase water-use efficiency.**

*Objectives, and Bold Steps*

**Decrease water-use (potable and non-potable water)**

**BOLD STEP:** Through sub-metering and other irrigation control systems, identify water usage for each building and landscape irrigation systems of 2,500 sf or greater.

**Goal: Improve stormwater quality.**

*Objectives, and Bold Steps*

**Prevent stormwater pollution and raise awareness.**

**BOLD STEP:** Adopt the CCC Model Stormwater Management Program, meeting Minimum Control Measures (MCMs)

- *MCM 01: Education and Outreach on Storm Water Issues*
- *MCM 02: Campus Community Involvement and Participation*
- *MCM 03: Illicit Discharge Detection and Elimination*
- *MCM 04: Construction Site Storm Water Runoff Control*
- *MCM 05: Post Construction Storm Water Management in New Development and Development*
- *MCM 06: Pollution Prevention and Good Housekeeping for Facilities Maintenance and Operation*



# Eco-Systems and Water

## Goal: Enhance biodiversity through Land Management

*Objectives, and Bold Steps*

**Practice ecological landscape management.**

**Rewild undeveloped areas**

**BOLD STEP: Develop an Integrated Pest Management Program**

**BOLD STEP: Perform a biodiversity survey**

# Health and Well-being

**Goal: Create a culture of health and well-being for Riverside Community College District.**

*Objectives, and Bold Steps*

## Employee Programs

**Provide comprehensive employee wellness initiatives and education encompassing physical, mental and spiritual health.**

**BOLD STEP:** Create employee satisfaction survey based on a selected framework on health and well-being for employees.

## Student Programs

**Provide comprehensive student wellness programs and education encompassing physical, mental and spiritual health.**

**BOLD STEPS:** Create student health and well-being satisfaction survey based on existing health and well-being frameworks.

## Physical Space

**Increase the amount of indoor and outdoor space available to the RCCD community dedicated to supporting wellness.**

- Campus community gardens
- Improved outdoor spaces for physical activity including walking trails.
- Improved outdoor spaces for education or breaks.
- Continuous monitoring of Indoor/ Outdoor Environmental Quality at each college to better understand air quality, acoustic comfort, traffic impact, weather, etc.
- Healthy Campus Framework

# Academics

**Goal: Increase sustainability literacy on campus and community.**

*In alignment with future planning, partnership with Faculty Senate and Academic Leaders*

Courses

**Increase availability of academic courses on or related to sustainability.**

**BOLD STEP:** Conduct an inventory to identify sustainability course offerings.

Learning Outcomes

**Increase the percentage of students who take a course with a sustainability learning outcome.**

**BOLD STEP:** Conduct an inventory to identify sustainability learning outcomes and how many students are enrolled within these courses

Campus as a Living Lab

**Implement Opportunities to use the Campuses as Living Labs.**

**BOLD STEP:** Create college task forces to brainstorm, plan, and implement short-term solutions for using the campus as a teaching tool..

Degree Programs

**Offer degree programs focused on sustainability. (AA, AS)**

**BOLD STEP:** Form a working group for curriculum development across disciplines and course articulation with University partner institutions

# Engagement

**Goal: Expand the RCCD community's knowledge of sustainability to be inclusive of social, economic, and environmental factors while promoting resource conservation and socially just behaviors.**

*In alignment with future planning*

## Campus Outreach

**Increase the number of opportunities for campus stakeholders to be exposed to sustainability**

**BOLD STEP: Set up campus sustainability websites**

**Increase Sustainability Literacy for Campus Users**

**BOLD STEP: Conduct a Sustainability Literacy Assessment per AASHE Stars guidelines**

## Community Outreach

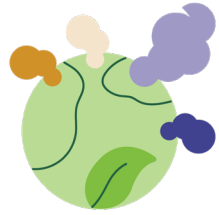
**Establish opportunities for RCCD to collaborate in the community**

**BOLD STEP: Establish a formal campus/district/community partnership to advance sustainability**

# OUR PLANNING FRAMEWORK: Organizing the VALUES (Our Why)

## Included

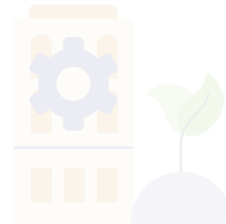
*Includes the creation of goals and metrics within the S-CAP*



Decarbonization and Climate Justice



Waste / Procurement



Eco-systems / Water



Health and Well-being



Resiliency

## Influenced

*Would be included in an update with a sustainability lens / new plan*



Academics



Engagement



Trust and Transparency

## Reinforced

*Planning and metrics already exist in other plans*



Community Partnerships



Equity and Social Justice