

Meeting Minutes



Meeting Date 04.04.2022
To Hussain Agah, Mehran Mohtasham, Myra Nava
From DLR Group
Location via ZOOM
Project RCCD: Sustainability and Climate Action Plan / IEMP / TCO
Project No. N/A
Attendees Mehran Mohtasham, Linsey Graff, Lindsey Perez, Hussain Agah, Virgil Lee, Kimberly Bell, Claudia Figueroa, Kim Kamerin, Aneesa Kashif, Barbara Moore, Michael Bobo, Dr. Michael Collins, Courtney Buchanan, Daren Koch, Torria Davis, Ashley Etchinson, Susan Finley, Monica Green, Hayley Ashby, Dominique Hitchcock, Jody Tyler, Amy Kramer, Marie Hicks, Melissa Bader, Lisa Nelson, Patty Worsham, Quinton Bemiller, Sigrid Williams, Vivian Harris, Dana White, Alex Zadeh.
Purpose Norco College Academic Senate – Sustainability and Climate Action Plan Update

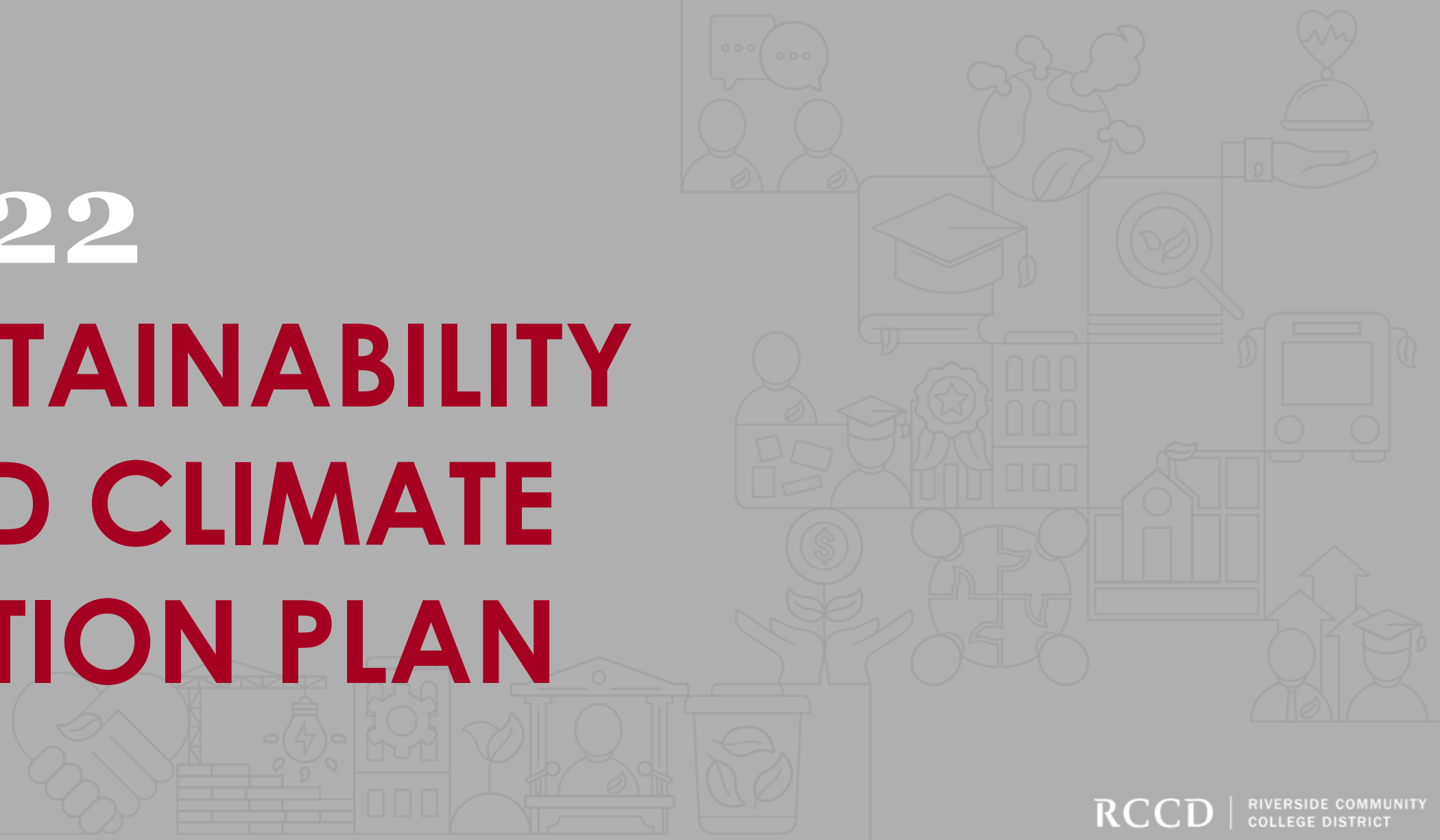
1650 Spruce Street, Suite 300
Riverside, CA 92507

Minutes:

- See Attached Slides Presented.
- Discussion
 1. Question: how are you accounting for so many of us now (and the past 2 years) working from home online thus drawing on personal electrical, water and waste usage vs on campus?
 - a. We have been collecting the past five years of utility data for each of the colleges. This will allow comparisons between years and allow us to establish a baseline to improve upon.
 2. Waste a lot of water on the campus – where the grass is located.
 - a. Has there been any discussion to think about California Native plantings on campus such as California pollinators? There could be value in connecting to classes, such as Botany and Field Botany classes.
 - i. Yes, this has been discussed and accounted for in Water and Eco-systems Impact Area. Another opportunity for Signage and engagement providing the “why” those native plants are there to increase sustainability literacy on campus.
 3. Considering our climate is everchanging – how is the change around us impacting the plan. For example, nearby there used to be a flood plain which is now all concrete.
 - a. This is very much related to impact of choices made and the impact upstream and downstream. This is part of the Decarbonization and Climate Justice impact area.
 4. How are the Water goals being measured and communicated? How would an occupant understand if water used on campus, such as sprinklers, is in line with the goals of the plan?
 - a. Engagement is an impact area and the campus outreach would need to be part communicating action and education to campus occupants.
 5. What is driving this action at RCCD and the sustainability committee?
 - a. RCCD Board policy (1557)
 - i. Sustainability and Environmental responsibility
 - Past actions and policies were last updated in 2011
 - RCCD is using the the state chancellor’s office BOG sustainability policy as a guideline to create its own.
 - RCCD recognizes that it is important for this institution to live the sustainability and develop inspired and achievable level of actions to the ongoing climate crises

2022

**SUSTAINABILITY
AND CLIMATE
ACTION PLAN**



Scope and Deliverables



SCAP

Sustainability and Climate Action Plan

Establish an implementable roadmap towards holistic sustainability goals which sets RCCD up as a leader in addressing Environmental Stewardship and Climate Change.



IEMP

Integrated Energy Master Plan

Establish an implementable roadmap towards Carbon Neutrality at each campus.



TCO

Total Cost of Ownership Model

Develop a framework for cost-effective decision-making that identifies human and capital resources needed to address goals of the SCAP and IEMP.



STARS

AASHE Stars Report

Establish a roadmap toward peer group recognition of your sustainability efforts. AASHE Stars is a third-party reporting framework connecting sustainability in the built environment and academics.

Our Project Schedule

*Board Approval –
Fall 2022*

**Project Complete
May 31, 2023**

	2021							2022					
	Jun.	Jul.	Aug.	Sep.	Oct.	Nov.	Dec.	Jan.	Feb.	Mar.	Apr.	May	Jun.
TASKS	TASK 1: Project Initiation			TASK 2: Research and Analysis			TASK 3: Implementation Phase						TASK 4: Verification and Monitoring
SCAP	Project Initiation			VALUES and Vision		Prioritization and Goals			Action Plan and Implementation			Final Plan	
IEMP				Campus Building Profiles	Energy Audits	Recommend ECMs			ECMs Finalized	Dashboard	Draft Plan	Final Plan	Final Approvals
TCO				Identify Assets	Classify Assets	Decision Criteria	Funding Analysis		Costing Assets	Asset Decisions		Comprehensive Asset Plan	Final Approvals
STARS													
Committee Workshop			Kick-Off Meeting	VALUES	Listening / Deep-Dives	Baselines		Goal Setting		Action Plan	Draft Plan	Final Plan	Final Approvals
Campus Work			President's Kick-off	VALUES	Open Houses	Campus Updates	-	-	College Action Plan		Draft Plan		Final Approvals
Deliverable Due													

We are here.

Project Updates



AASHE Membership!



Dashboard Mania

**SCE
SOCAL GAS
FPPS**

Partnerships

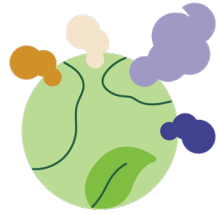
Review

Our Planning Framework

OUR PLANNING FRAMEWORK: Organizing the VALUES (Our Why)

Included

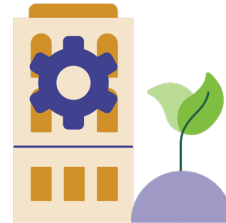
Includes the creation of goals and metrics within the S-CAP



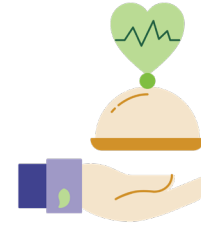
Decarbonization and Climate Justice



Waste / Procurement



Eco-systems / Water



Health and Well-being



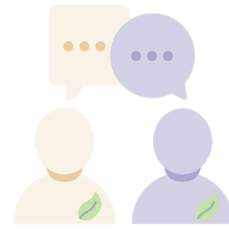
Resiliency

Influenced

Would be included in an update with a sustainability lens / new plan



Academics



Engagement



Trust and Transparency

Reinforced

Planning and metrics already exist in other plans



Community Partnerships



Equity and Social Justice

VALUES AND OTHER FRAMEWORKS

Innovation and Leadership (ALL)


Your Top VALUES

CCCCO

AASHE Stars


 Decarbonization, Energy Use, and Climate Justice


 Waste / Procurement


 Water Eco-systems


 Health and Well-being

 Resiliency

 Academics

 Engagement

 Community Partnerships

 Trust and Transparency

 Equity and Social Justice

Operations

Gap

Academics

Engagement

Planning and Administration

Operations

Gap

Academic and Curriculum

Engagement

Planning and Administration

Impact Area

IMPACT AREAS are the top **VALUES** as created collectively by the District and Colleges.



Decarbonization and Climate Justice



Waste / Procurement



Eco-systems / Water



Health and Well-being



Resiliency



Academics



Engagement



Trust and Transparency



Community Partnerships



Equity and Social Justice

Impact Area

IMPACT AREAS are the top VALUES as created collectively by the District and Colleges.

Goal or Desired Outcome

GOALS AND OUTCOMES establish aspirational thinking that the District and Colleges will work toward. These were established by cross-referencing System and Stars frameworks with Impact Areas.

ACTIONS are the initiatives that it will take to get meet your goal / outcome

Actions (per objective)

Objectives

OBJECTIVES outline measurable actions were established by from District and Campus engagement, System mandates, and HiEd best practices.

Measures

MEASURES align with the objectives to manage what success will look.

Metrics

METRICS outline how the objective will be measured based on the data available or data required.

Milestones

MILESTONES represent the timeline associated with each objective. These outline short-, mid-, and long-term strategies.

Five Dimensions of Resiliency

RESILIENCY overlays risk-management and the five dimensions of resiliency (Ecosystem, Financial, Human Health, Infrastructure, Social) into each Impact Area

- By District
- By College

Let's Dive In!

Discuss Impact Areas

OUR PLANNING FRAMEWORK: Organizing the VALUES (Our Why)

Included

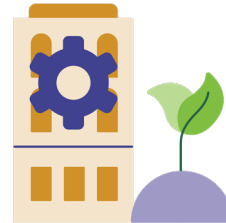
Includes the creation of goals and metrics within the S-CAP



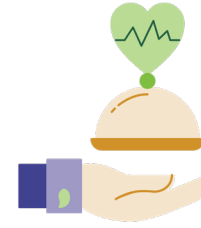
Decarbonization and Climate Justice



Waste / Procurement



Eco-systems / Water



Health and Well-being



Resiliency

Influenced

Would be included in an update with a sustainability lens / new plan



Academics



Engagement



Trust and Transparency

Reinforced

Planning and metrics already exist in other plans



Community Partnerships



Equity and Social Justice

Waste

Goal: Achieve zero waste to landfill by 2025.

Objectives, and Bold Steps

Recyclables and Waste Minimization

**Increase diversion rates for non-construction waste.
Reduce the total weight of non-construction waste.**

BOLD STEPS: Conduct Waste Categorization Assessment;
Conduct total material consumption benchmark

Construction Waste

Increase construction waste diversion rate from landfill.

BOLD STEPS: Set stricter requirements for contractors that align with the District's sustainability goals

Organic Waste

Increase diversion of dining and landscape wastes from landfill.

BOLD STEPS: Establish an organic waste diversion program in primary dining location

Hazardous Waste and E-Waste

Create programs and systems for hazardous and e-waste.

BOLD STEPS: Benchmark programs that dispose of all hazardous, universal, and non-regulated chemical waste

Durable Goods

Increase opportunities to share and donate durable goods.

BOLD STEPS: Establish a comprehensive durable goods sharing/donation program

Waste

Goal: Achieve zero waste to landfill by 2025.

Objectives, and Bold Steps

Procurement

Increase sustainable purchasing.

BOLD STEP: Work with procurement to inventory the districts and each colleges 'environmentally preferable purchases for highly used items in alignment with State procurement best practices.

Eco-Systems and Water

Goal: Substantially increase water-use efficiency.

Objectives, and Bold Steps

Decrease water-use (potable and non-potable water)

BOLD STEP: Through sub-metering and other irrigation control systems, identify water usage for each building and landscape irrigation systems of 2,500 sf or greater.

Goal: Improve stormwater quality.

Objectives, and Bold Steps

Prevent stormwater pollution and raise awareness.

BOLD STEP: Adopt the CCC Model Stormwater Management Program, meeting Minimum Control Measures (MCMs)

- *MCM 01: Education and Outreach on Storm Water Issues*
- *MCM 02: Campus Community Involvement and Participation*
- *MCM 03: Illicit Discharge Detection and Elimination*
- *MCM 04: Construction Site Storm Water Runoff Control*
- *MCM 05: Post Construction Storm Water Management in New Development and Development*
- *MCM 06: Pollution Prevention and Good Housekeeping for Facilities Maintenance and Operation*

Eco-Systems and Water

Goal: Enhance biodiversity through Land Management

Objectives, and Bold Steps

Practice ecological landscape management.

Rewild undeveloped areas

BOLD STEP: Develop an Integrated Pest Management Program

BOLD STEP: Perform a biodiversity survey

Health and Well-being

Goal: Create a culture of health and well-being for Riverside Community College District.

Objectives, and Bold Steps

Employee Programs

Provide comprehensive employee wellness initiatives and education encompassing physical, mental and spiritual health.

BOLD STEP: Create employee satisfaction survey based on a selected framework on health and well-being for employees.

Student Programs

Provide comprehensive student wellness programs and education encompassing physical, mental and spiritual health.

BOLD STEPS: Create student health and well-being satisfaction survey based on existing health and well-being frameworks.

Physical Space

Increase the amount of indoor and outdoor space available to the RCCD community dedicated to supporting wellness.

- Campus community gardens
- Improved outdoor spaces for physical activity including walking trails.
- Improved outdoor spaces for education or breaks.
- Continuous monitoring of Indoor/ Outdoor Environmental Quality at each college to better understand air quality, acoustic comfort, traffic impact, weather, etc.
- Healthy Campus Framework

OUR PLANNING FRAMEWORK: Organizing the VALUES (Our Why)

Included

Includes the creation of goals and metrics within the S-CAP



Decarbonization and Climate Justice



Waste / Procurement



Eco-systems / Water



Health and Well-being



Resiliency

Influenced

Would be included in an update with a sustainability lens / new plan



Academics



Engagement



Trust and Transparency

Reinforced

Planning and metrics already exist in other plans



Community Partnerships



Equity and Social Justice



Goal: Increase sustainability literacy on campus and community.

In alignment with future planning, partnership with Faculty Senate and Academic Leaders

Courses

Increase availability of academic courses on or related to sustainability.

BOLD STEP: Conduct an inventory to identify sustainability course offerings

Learning Outcomes

Increase the percentage of students who take a course with a sustainability learning outcome.

BOLD STEP: Conduct an inventory to identify sustainability learning outcomes and how many students are enrolled within these courses

Campus as a Living Lab

Implement Opportunities to use the Campuses as Living Labs.

BOLD STEP: Create college task forces to brainstorm, plan, and implement short-term solutions for using the campus as a teaching tool

Degree Programs

Offer degree programs focused on sustainability. (AA, AS)

BOLD STEP: Form a working group for curriculum development across disciplines and course articulation with University partner institutions

Engagement



The long-term vision is to connect your campus and community outreach to your sustainability goals.

Goal: Expand the RCCD community's knowledge of sustainability to be inclusive of social, economic, and environmental factors while promoting resource conservation and socially just behaviors.

In alignment with future planning for community and campus outreach

Campus Outreach

Increase the number of opportunities for campus stakeholders to be exposed to sustainability

BOLD STEP: Set up campus sustainability websites

Increase Sustainability Literacy for Campus Users

BOLD STEP: Conduct a Sustainability Literacy Assessment per AASHE Stars guidelines

Community Outreach

Establish opportunities for RCCD to collaborate in the community

BOLD STEP: Establish a formal campus/district/community partnership to advance sustainability

Thanks, Questions?