

# 2022 SUSTAINABILITY AND CLIMATE ACTION PLAN



# Scope and Deliverables



SCAP

## Sustainability and Climate Action Plan

Establish an implementable roadmap towards holistic sustainability goals which sets RCCD up as a leader in addressing Environmental Stewardship and Climate Change.



IEMP

## Integrated Energy Master Plan

Establish an implementable roadmap towards Carbon Neutrality at each campus.



TCO

## Total Cost of Ownership Model

Develop a framework for cost-effective decision-making that identifies human and capital resources needed to address goals of the SCAP and IEMP.



STARS

## AASHE Stars Report

Establish a roadmap toward peer group recognition of your sustainability efforts. AASHE Stars is a third-party reporting framework connecting sustainability in the built environment and academics.

# Our Project Schedule

|                    | 2021               |      |                      |                          |                        |   |                  | 2022         |                              |                 |            |        |            |
|--------------------|--------------------|------|----------------------|--------------------------|------------------------|---|------------------|--------------|------------------------------|-----------------|------------|--------|------------|
|                    | Jun.               | Jul. | Aug.                 | Sep.                     | Oct.                   | Nov.                                    | Dec.             | Jan.         | Feb.                         | Mar.            | Apr.       | May    | Jun.       |
| TASKS              | Project Initiation |      |                      | Visioning                |                        | Prioritization and Goals Identification |                  |              | Draft Action Plan and Review |                 |            |        | Final Plan |
| SCAP               |                    |      |                      | Values                   |                        |   |                  |              |                              |                 |            | Review | Review     |
| IEMP               |                    |      |                      | Campus Building Profiles | Energy Audits          | Recommend ECMs                          |                  |              | ECMs Finalized               | Dashboard       | Draft Plan | Review | Review     |
| TCO                |                    |      |                      | Identify Assets          | Classify Assets        | Decision Criteria                       | Funding Analysis |              | Costing Assets               | Asset Decisions |            | Review | Review     |
| STARS              |                    |      |                      |                          |                        |   |                  |              |                              |                 |            |        |            |
| Committee Workshop |                    |      | Kick-Off Meeting     | VALUES                   | Listening / Deep-Dives | Baselines                               |                  | Goal Setting |                              | Action Plan     | Draft Plan | Review | Review     |
| Campus Work        |                    |      | President's Kick-off | VALUES                   | Open Houses            | Campus Updates                          | -                | -            | College Action Plan          |                 | Draft Plan |        |            |
| Deliverable Due    |                    |      |                      |                          |                        |   |                  |              |                              |                 |            |        |            |

Project Complete  
May 31, 2023

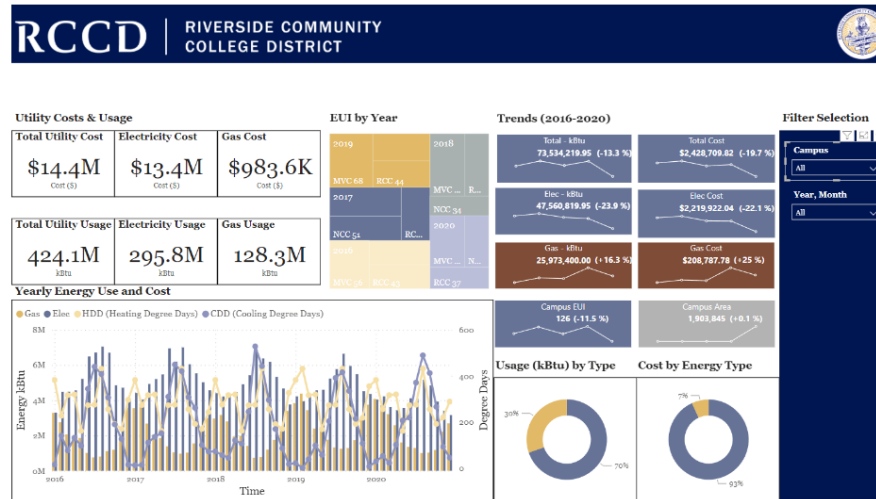
*Board Approval –  
Fall 2022*

**We are here.**

# Project Updates



AASHE Membership



Dashboard Mania

SoCal Edison  
SoCal Gas  
RPU

Partnerships

Review

# Sustainability and Climate Action Plan Framework

# SCAP FRAMEWORK: Organizing the Topics

## Included

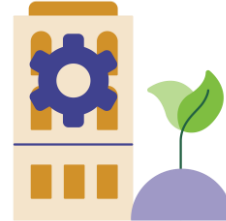
*Includes the creation of goals and metrics within the S-CAP*



Decarbonization and Climate Justice



Waste / Procurement



Eco-systems / Water



Health and Well-being



Resiliency

## Influenced

*Would be included in an update with a sustainability lens / new plan*



Academics



Engagement



Trust and Transparency

## Reinforced

*Planning and metrics already exist in other plans*



Community Partnerships



Equity and Social Justice

# TOPICS AND OTHER FRAMEWORKS

Innovation and Leadership (ALL)

*Your Top Topics*

CCCCO

*AASHE Stars*



Decarbonization, Energy Use, and Climate Justice



Waste / Procurement



Water Eco-systems



Health and Well-being



Resiliency



Academics



Engagement



Community Partnerships



Trust and Transparency



Equity and Social Justice

Operations

Operations

Gap

Gap

Academics

Academic and Curriculum

Engagement

Engagement

Planning and Administration

Planning and Administration

## Topic Area

**TOPIC AREAS** are the top topics as created collectively by the District and Colleges.



Decarbonization and  
Climate Justice



Waste /  
Procurement



Eco-systems /  
Water



Health and  
Well-being



Resiliency



Academics



Engagement



Trust and  
Transparency



Community  
Partnerships



Equity and Social  
Justice



Topic Area

**TOPIC AREAS** are the top topic areas as created collectively by the District and Colleges.

Goal or Desired Outcome

**GOALS AND OUTCOMES** establish aspirational thinking that the District and Colleges will work toward. These were established by cross-referencing System and Stars frameworks with Impact Areas.

**ACTIONS** are the initiatives that it will take to get meet your goal / outcome

**Actions (per objective)**

Objectives

**OBJECTIVES** outline measurable actions were established by from District and Campus engagement, System mandates, and HiEd best practices.

Measures

**MEASURES** align with the objectives to manage what success will look.

Metrics

**METRICS** outline how the objective will be measured based on the data available or data required.

Milestones

**MILESTONES** represent the timeline associated with each objective. These outline short-, mid-, and long-term strategies.

Five Dimensions of Resiliency

**RESILIENCY** overlays risk-management and the five dimensions of resiliency (Ecosystem, Financial, Human Health, Infrastructure, Social) into each Impact Area

- By District
- By College

**Let's Dive In!**

More Detail on the  
Topic Areas

# SCAPFRAMEWORK: Organizing the Topics

## Included

*Includes the creation of goals and metrics within the S-CAP*



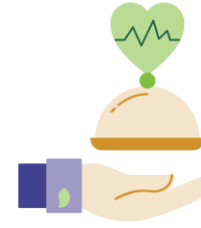
Decarbonization and Climate Justice



Waste / Procurement



Eco-systems / Water



Health and Well-being



Resiliency

## Influenced

*Would be included in an update with a sustainability lens / new plan*



Academics



Engagement



Trust and Transparency

## Reinforced

*Planning and metrics already exist in other plans*



Community Partnerships



Equity and Social Justice

# Waste and Procurement

**Goal: Achieve zero waste to landfill.**

*Objectives, and Bold Steps*

Recyclables and Waste Minimization

**Increase diversion rates for non-construction waste.  
Reduce the total weight of non-construction waste.**

**BOLD STEPS:** Conduct Waste Categorization Assessment;  
Conduct total material consumption benchmark

Construction Waste

**Increase construction waste diversion rate from landfill.**

**BOLD STEPS:** Set stricter requirements for contractors that align with the District's sustainability goals

Organic Waste

**Increase diversion of dining and landscape wastes from landfill.**

**BOLD STEPS:** Establish an organic waste diversion program in primary dining location

Hazardous Waste and E-Waste

**Create programs and systems for hazardous and e-waste.**

**BOLD STEPS:** Benchmark programs that dispose of all hazardous, universal, and non-regulated chemical waste

Durable Goods

**Increase opportunities to share and donate durable goods.**

**BOLD STEPS:** Establish a comprehensive durable goods sharing/donation program

# Waste and Procurement

**Goal: Achieve zero waste to landfill.**

*Objectives, and Bold Steps*

Procurement

**Increase sustainable purchasing.**

**BOLD STEP:** Work with procurement to inventory the districts and each colleges 'environmentally preferable purchases for highly used items in alignment with State procurement best practices.

# Eco-Systems and Water

**Goal: Substantially increase water-use efficiency.**

*Objectives, and Bold Steps*

**Decrease water-use (potable and non-potable water)**

**BOLD STEP:** Through sub-metering and other irrigation control systems, identify water usage for each building and landscape irrigation systems of 2,500 sf or greater.

MVC Recycled Water initiative is ahead of the curve when it comes to action in this Topic Area.

**Goal: Improve stormwater quality.**

*Objectives, and Bold Steps*

**Prevent stormwater pollution and raise awareness.**

**BOLD STEP:** Adopt the CCC Model Stormwater Management Program, meeting Minimum Control Measures (MCMs)

- *MCM 01: Education and Outreach on Storm Water Issues*
- *MCM 02: Campus Community Involvement and Participation*
- *MCM 03: Illicit Discharge Detection and Elimination*
- *MCM 04: Construction Site Storm Water Runoff Control*
- *MCM 05: Post Construction Storm Water Management in New Development and Development*
- *MCM 06: Pollution Prevention and Good Housekeeping for Facilities Maintenance and Operation*

# Eco-Systems and Water

## Goal: Enhance biodiversity through Land Management

*Objectives, and Bold Steps*

**Practice ecological landscape management.**

**Rewild undeveloped areas**

**BOLD STEP: Develop an Integrated Pest Management Program**

**BOLD STEP: Perform a biodiversity survey**

# Health and Well-being

**Goal: Create a culture of health and well-being for Riverside Community College District.**

*Objectives, and Bold Steps*

## Employee Programs

**Provide comprehensive employee wellness initiatives and education encompassing physical, mental and spiritual health.**

**BOLD STEP:** Create employee satisfaction survey based on a selected framework on health and well-being for employees.

## Student Programs

**Provide comprehensive student wellness programs and education encompassing physical, mental and spiritual health.**

**BOLD STEPS:** Create student health and well-being satisfaction survey based on existing health and well-being frameworks.

## Physical Space

**Increase the amount of indoor and outdoor space available to the RCCD community dedicated to supporting wellness.**

- Campus community gardens
- Improved outdoor spaces for physical activity including walking trails.
- Improved outdoor spaces for education or breaks.

## Real Food Commitment

**Address food insecurity and healthy food education across Riverside Community College District..**

**BOLD STEP:** Sign the Real Food Campus Commitment and follow the required tasks outlined for the first 12 months, studying food supply and education on healthy foods.



# SCAP FRAMEWORK: Organizing the Topics

## Included

*Includes the creation of goals and metrics within the S-CAP*



Decarbonization and Climate Justice



Waste / Procurement



Eco-systems / Water



Health and Well-being



Resiliency

## Influenced

*Would be included in an update with a sustainability lens / new plan*



Academics



Engagement



Trust and Transparency

## Reinforced

*Planning and metrics already exist in other plans*



Community Partnerships



Equity and Social Justice



## Goal: Increase sustainability literacy on campus and community.

*In alignment with future planning, partnership with Faculty Senate and Academic Leaders*

### Courses

**Increase availability of academic courses on or related to sustainability.**

**BOLD STEP:** Conduct an inventory to identify sustainability course offerings

### Learning Outcomes

**Increase the percentage of students who take a course with a sustainability learning outcome.**

**BOLD STEP:** Conduct an inventory to identify sustainability learning outcomes and how many students are enrolled within these courses

### Campus as a Living Lab

**Implement Opportunities to use the Campuses as Living Labs.**

**BOLD STEP:** Create college task forces to brainstorm, plan, and implement short-term solutions for using the campus as a teaching tool

### Degree Programs

**Offer degree programs focused on sustainability. (AA, AS)**

**BOLD STEP:** Form a working group for curriculum development across disciplines and course articulation with University partner institutions

# Engagement



The long-term vision is to connect your campus and community outreach to your sustainability goals.

**Goal: Expand the RCCD community's knowledge of sustainability to be inclusive of social, economic, and environmental factors while promoting resource conservation and socially just behaviors.**

*In alignment with future planning for community and campus outreach*

## Campus Outreach

**Increase the number of opportunities for campus stakeholders to be exposed to sustainability**

**BOLD STEP:** Set up campus sustainability websites

**Increase Sustainability Literacy for Campus Users**

**BOLD STEP:** Conduct a Sustainability Literacy Assessment per AASHE Stars guidelines

## Community Outreach

**Establish opportunities for RCCD to collaborate in the community**

**BOLD STEP:** Establish a formal campus/district/community partnership to advance sustainability

Thanks, Questions?