

# Inland Empire Technical Trade Center (IETTC)

## Conceptual Site Development Plan

August 2024

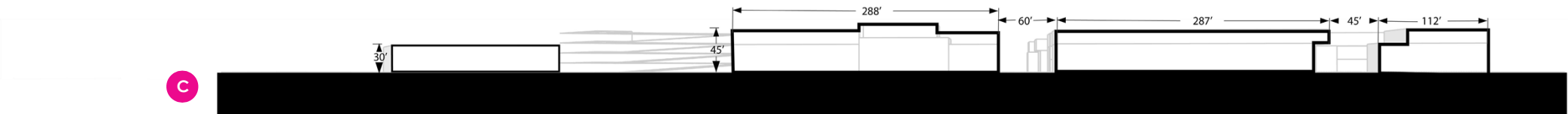
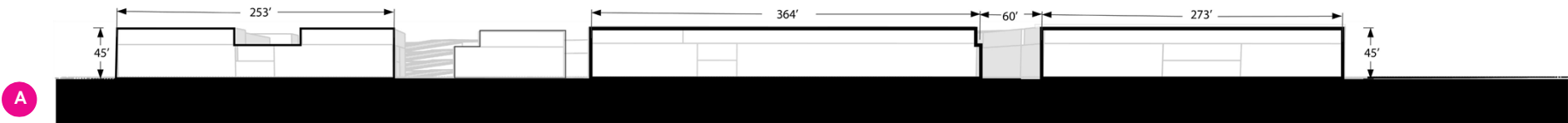
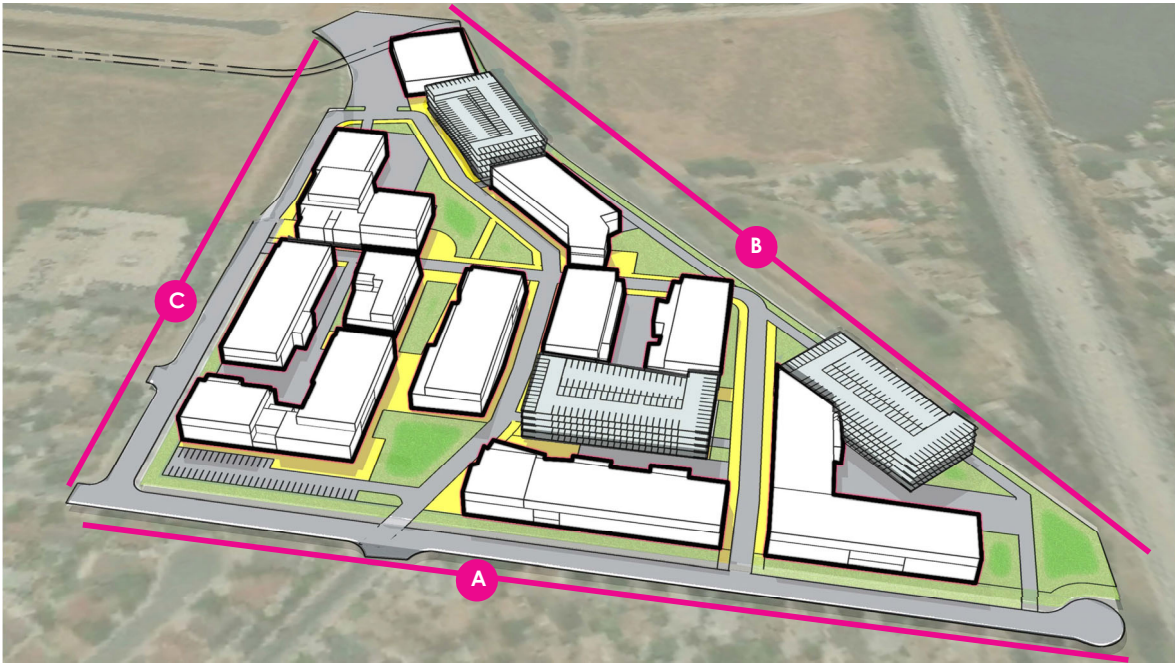
### **NOTE:**

- ☐ This site plan tests the capacity of the site for the process of site entitlement.
- ☐ A Comprehensive Master Plan process will study and refine programs, space needs, and parking to shape development, open space, and site circulation.
- ☐ The process will commence in the Spring 2025 and will be approved by the RCCD Board of Trustees by Summer/Fall 2025.
- ☐ Site location: 6464 33rd Street, Jurupa Valley, California
- ☐ Property Size: 24.06 Acres
- ☐ Parcel: 117-110-16 and 117-110-18









Potential Phasing

