

2020 Census

	Trustee Area 1	Trustee Area 2	Trustee Area 3
Population	201,427	199,153	202,552
Deviation	-3,441	-5,715	-2,316
Deviation %	-1.7%	-2.8%	-1.1%
Other	63,473	50,726	62,287
Other %	31.5%	25.5%	30.8%
Latino	94,462	127,630	115,881
Latino %	46.9%	64.1%	57.2%
Asian	31,660	11,999	12,388
Asian %	15.7%	6.0%	6.1%
Black	11,832	8,798	11,996
Black %	5.9%	4.4%	5.9%

Citizen Voting Age Population (CVAP)

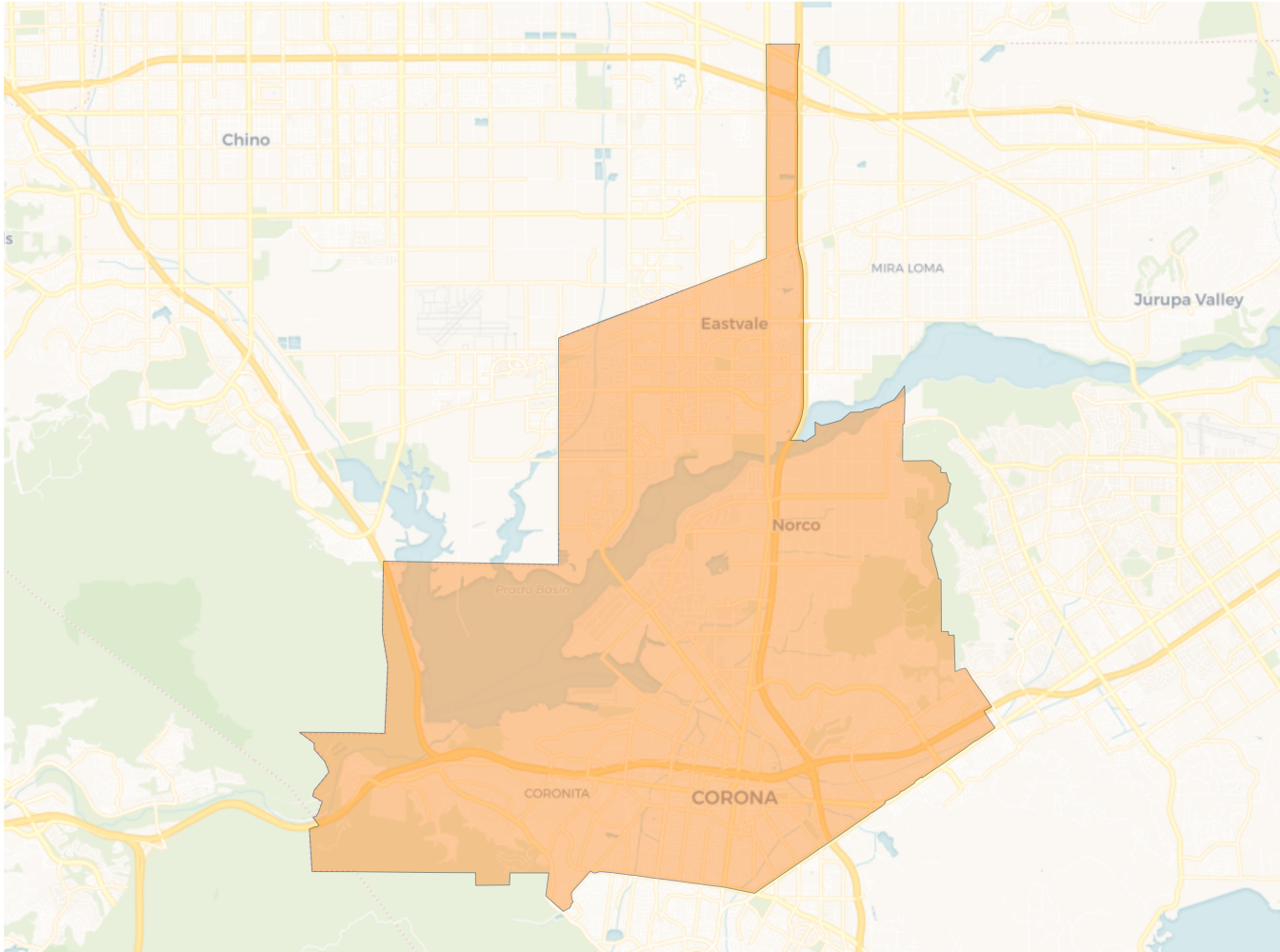
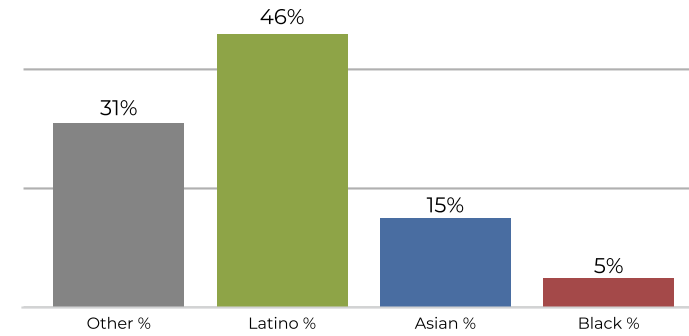
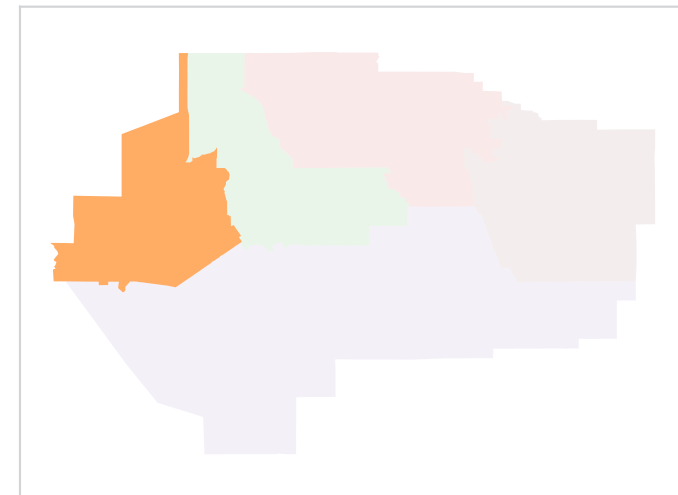
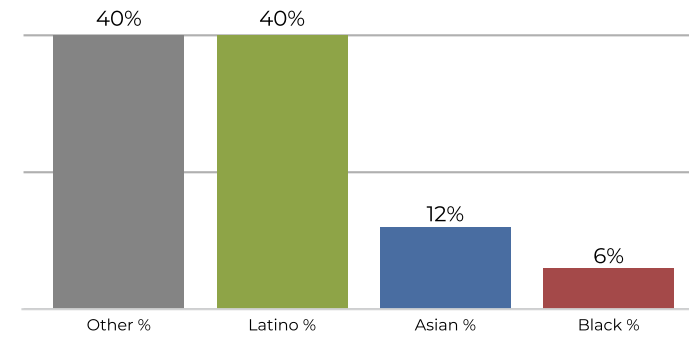
	Trustee Area 1	Trustee Area 2	Trustee Area 3
Total CVAP	125,796	129,570	130,398
Other CVAP	50,979	46,942	52,165
Other CVAP %	40.5%	36.2%	40.0%
Latino CVAP	50,854	67,599	60,746
Latino CVAP %	40.4%	52.2%	46.6%
Asian CVAP	16,158	7,645	8,439
Asian CVAP %	12.8%	5.9%	6.5%
Black CVAP	7,805	7,384	9,048
Black CVAP %	6.2%	5.7%	6.9%

2020 Census

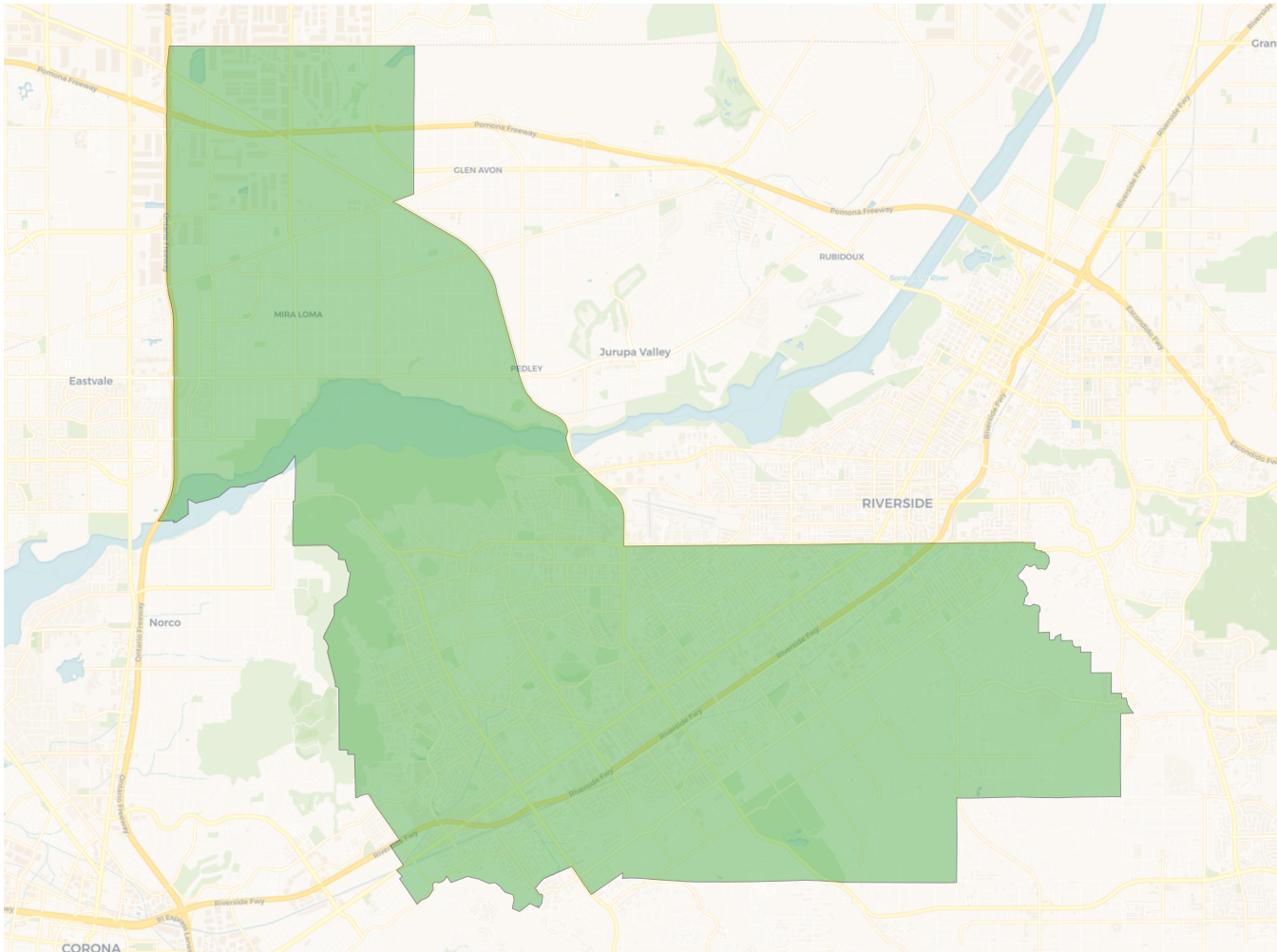
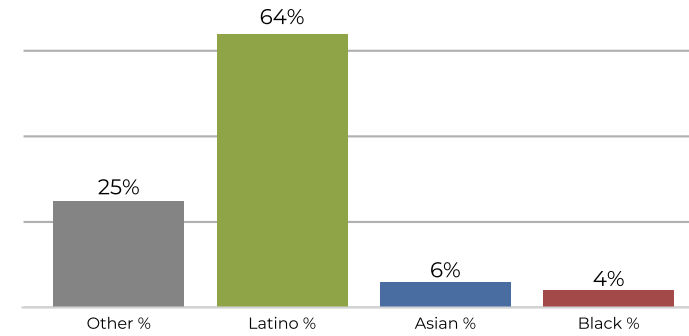
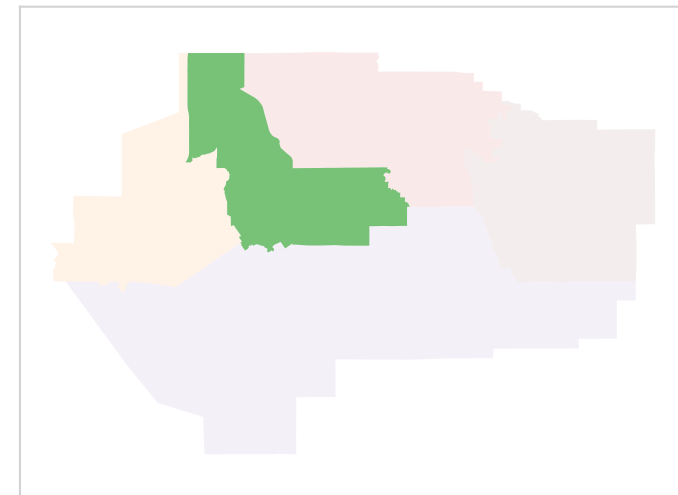
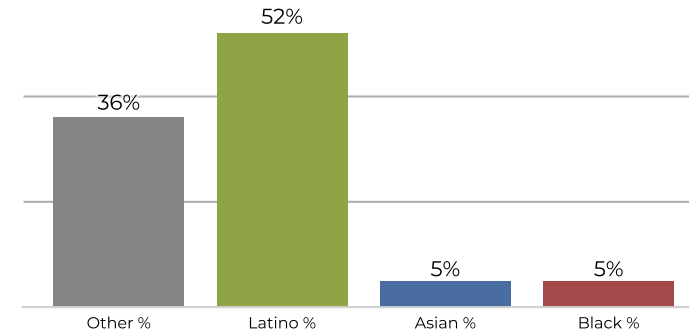
	Trustee Area 4	Trustee Area 5
Population	210,744	210,463
Deviation	5,876	5,595
Deviation %	2.9%	2.7%
Other	77,303	37,295
Other %	36.7%	17.7%
Latino	97,160	128,920
Latino %	46.1%	61.3%
Asian	22,137	12,149
Asian %	10.5%	5.8%
Black	14,144	32,099
Black %	6.7%	15.3%

Citizen Voting Age Population (CVAP)

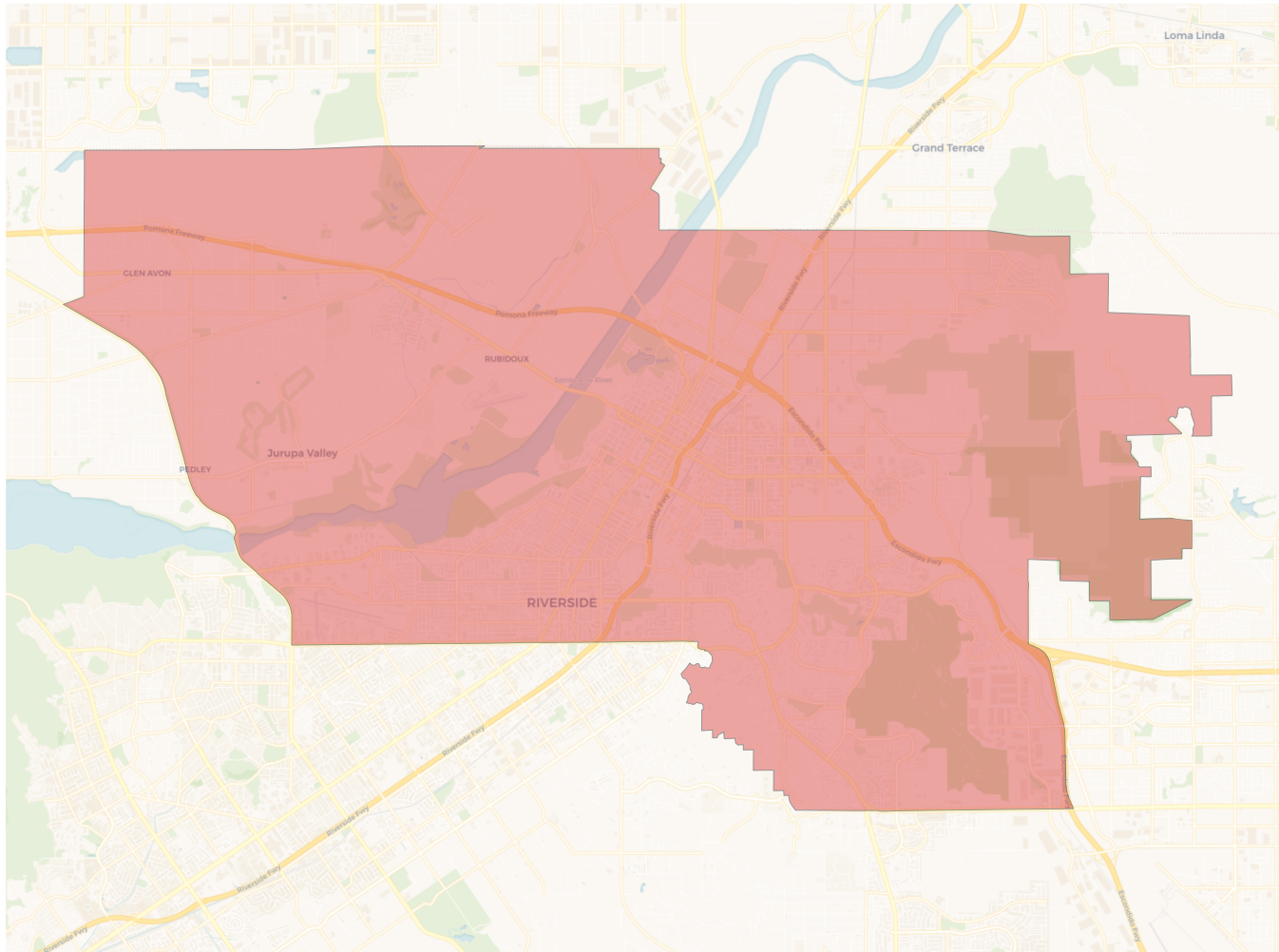
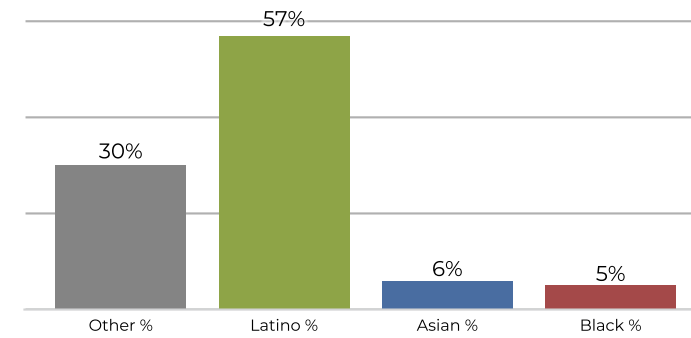
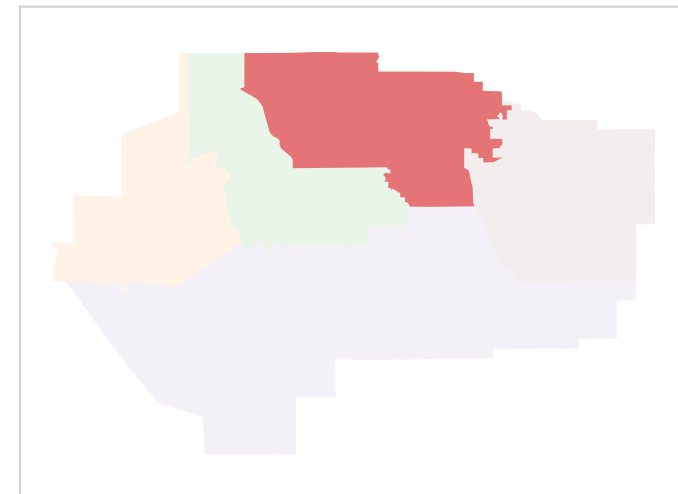
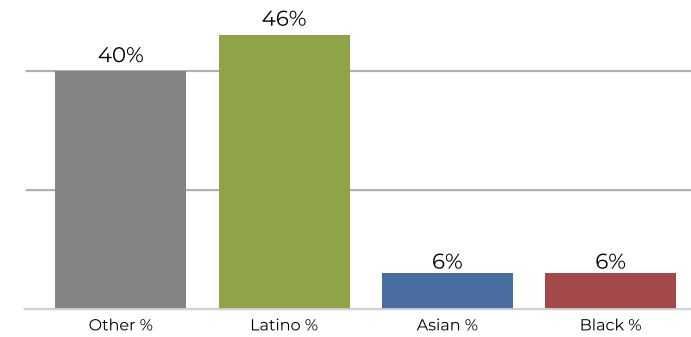
	Trustee Area 4	Trustee Area 5
Total CVAP	143,574	125,673
Other CVAP	62,281	28,685
Other CVAP %	43.4%	22.8%
Latino CVAP	53,887	62,979
Latino CVAP %	37.5%	50.1%
Asian CVAP	14,232	7,911
Asian CVAP %	9.9%	6.3%
Black CVAP	13,174	26,098
Black CVAP %	9.2%	20.8%

Trustee Area 1

2020 Census

Citizen Voting Age Population


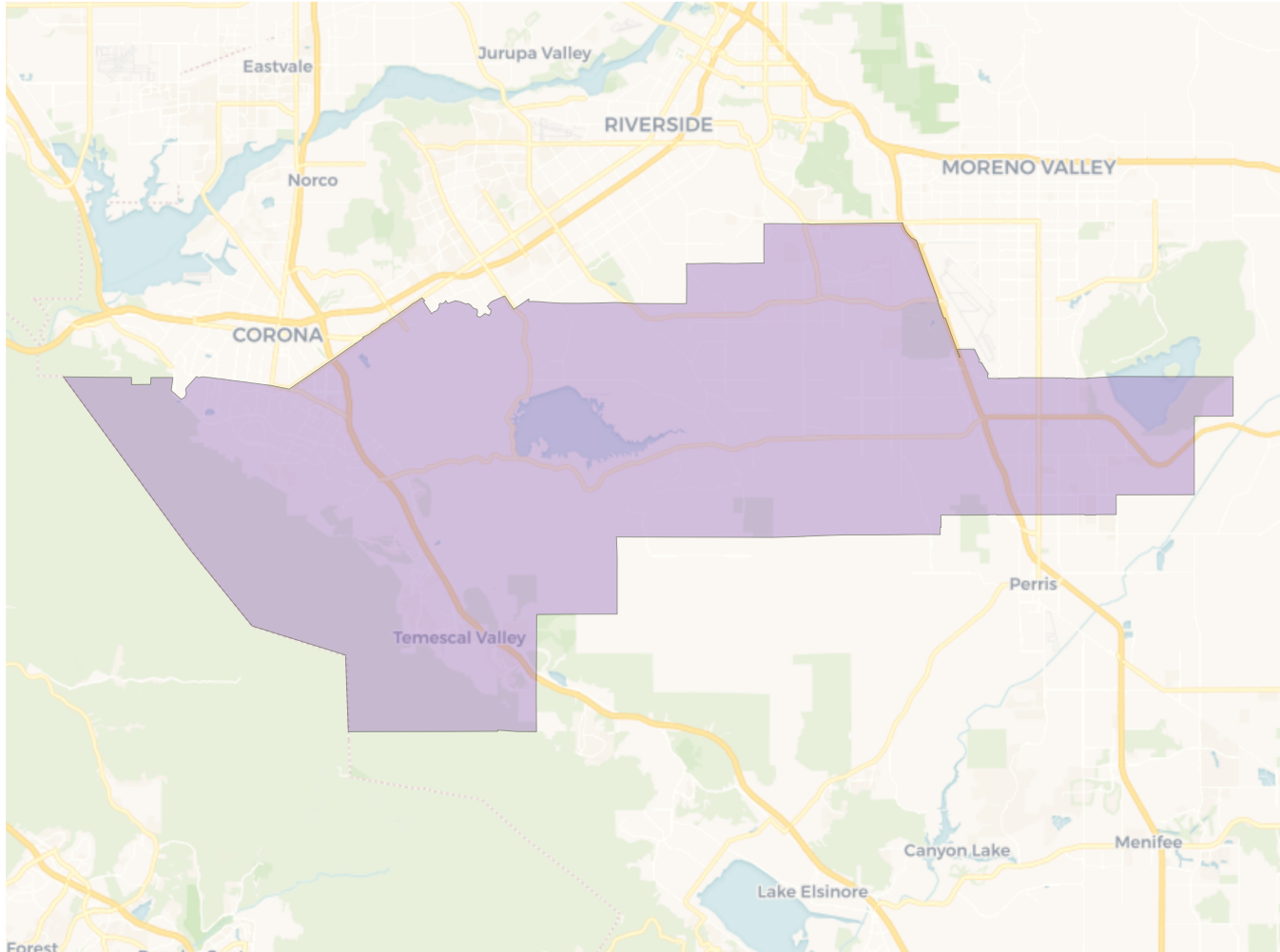
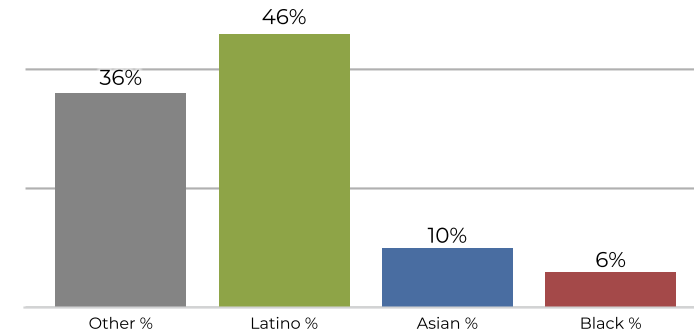
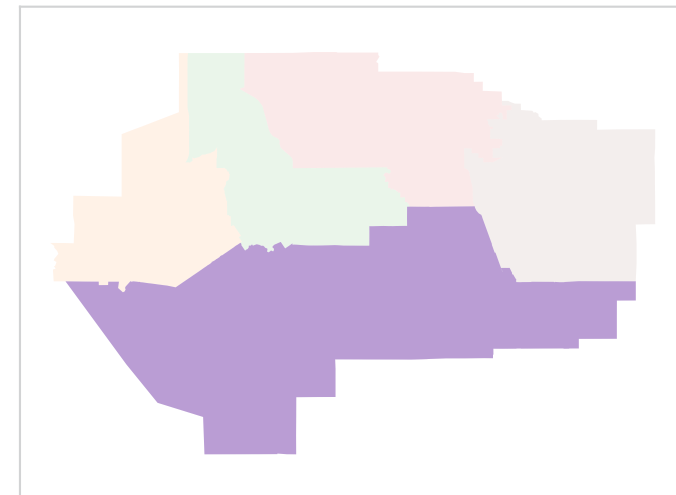
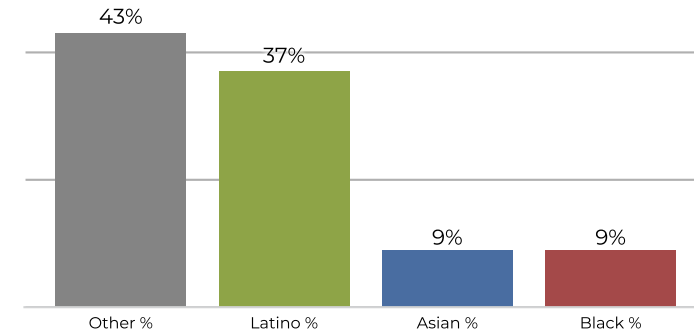
Population	Deviation	Deviation %	Other	Other %	Latino	Latino %	Asian	Asian %	Black	Black %
201,427	-3,441	-1.7%	63,473	31.5%	94,462	46.9%	31,660	15.7%	11,832	5.9%
Total CVAP	Other CVAP	Other CVAP %	Latino CVAP	Latino CVAP %	Asian CVAP	Asian CVAP %	Black CVAP	Black CVAP %		
125,796	50,979	40.5%	50,854	40.4%	16,158	12.8%	7,805	6.2%		

Trustee Area 2

2020 Census

Citizen Voting Age Population


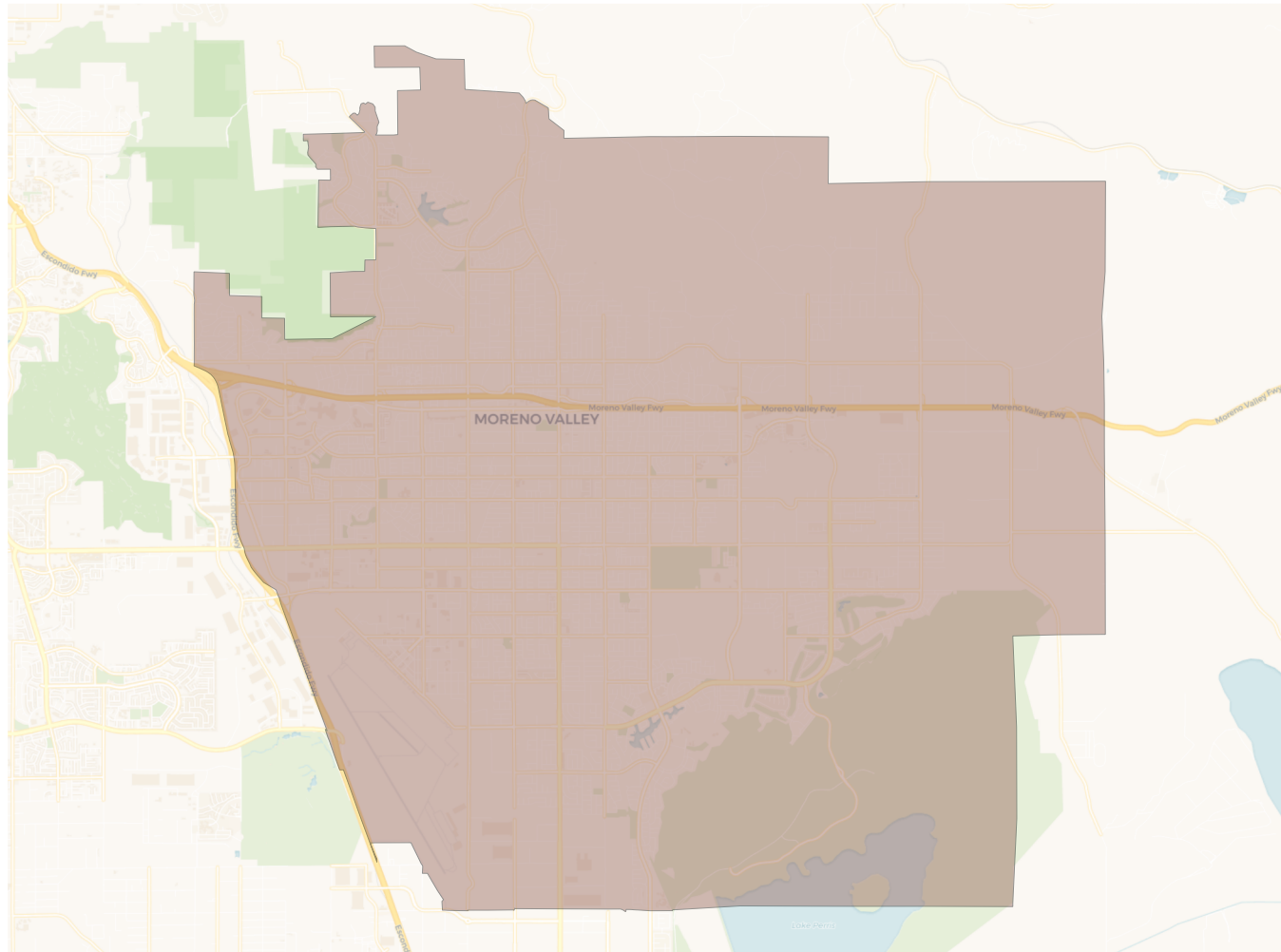
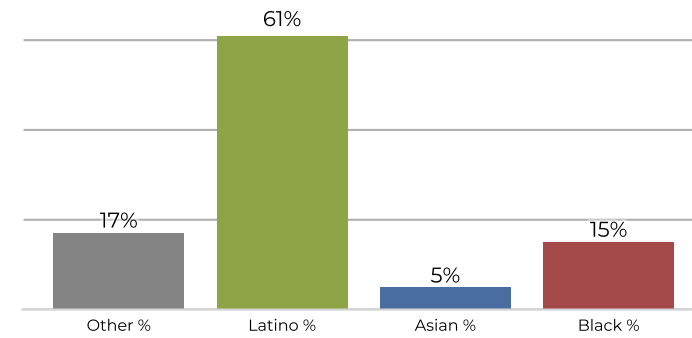
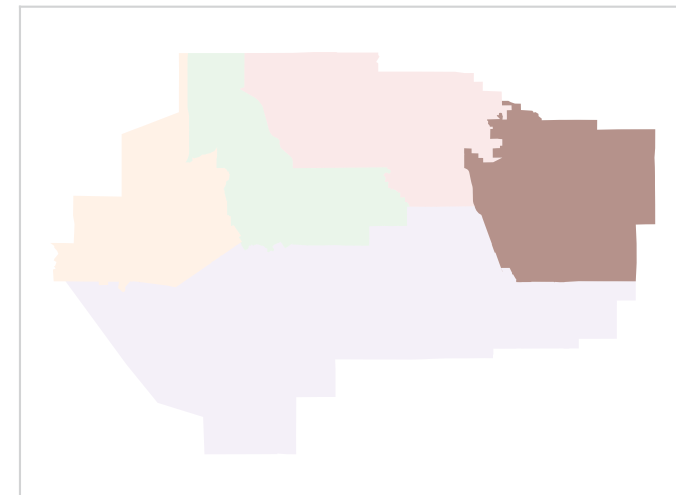
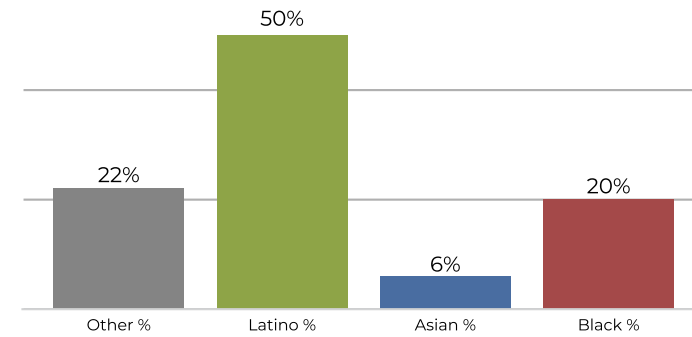
Population	Deviation	Deviation %	Other	Other %	Latino	Latino %	Asian	Asian %	Black	Black %
199,153	-5,715	-2.8%	50,726	25.5%	127,630	64.1%	11,999	6.0%	8,798	4.4%
Total CVAP	Other CVAP	Other CVAP %	Latino CVAP	Latino CVAP %	Asian CVAP	Asian CVAP %	Black CVAP	Black CVAP %		
129,570	46,942	36.2%	67,599	52.2%	7,645	5.9%	7,384	5.7%		

Trustee Area 3

2020 Census

Citizen Voting Age Population


Population	Deviation	Deviation %	Other	Other %	Latino	Latino %	Asian	Asian %	Black	Black %
202,552	-2,316	-1.1%	62,287	30.8%	115,881	57.2%	12,388	6.1%	11,996	5.9%
Total CVAP	Other CVAP	Other CVAP %	Latino CVAP	Latino CVAP %	Asian CVAP	Asian CVAP %	Black CVAP	Black CVAP %		
130,398	52,165	40.0%	60,746	46.6%	8,439	6.5%	9,048	6.9%		

Trustee Area 4

2020 Census

Citizen Voting Age Population


Population	Deviation	Deviation %	Other	Other %	Latino	Latino %	Asian	Asian %	Black	Black %
210,744	5,876	2.9%	77,303	36.7%	97,160	46.1%	22,137	10.5%	14,144	6.7%
Total CVAP	Other CVAP	Other CVAP %	Latino CVAP	Latino CVAP %	Asian CVAP	Asian CVAP %	Black CVAP	Black CVAP %		
143,574	62,281	43.4%	53,887	37.5%	14,232	9.9%	13,174	9.2%		

Trustee Area 5

2020 Census

Citizen Voting Age Population


Population	Deviation	Deviation %	Other	Other %	Latino	Latino %	Asian	Asian %	Black	Black %
210,463	5,595	2.7%	37,295	17.7%	128,920	61.3%	12,149	5.8%	32,099	15.3%
Total CVAP	Other CVAP	Other CVAP %	Latino CVAP	Latino CVAP %	Asian CVAP	Asian CVAP %	Black CVAP	Black CVAP %		
125,673	28,685	22.8%	62,979	50.1%	7,911	6.3%	26,098	20.8%		