

**Board of Trustees - Special Joint Board Meeting with Jurupa Unified School District**  
**Monday, March 18, 2019 6:00 PM**  
**Jurupa Unified School District Board Room**  
**4850 Pedley Road**  
**Riverside CA 92509**

**ORDER OF BUSINESS**

**Pledge of Allegiance**

Anyone who wishes to make a presentation to the Board on an agenda item is requested to please fill out a "REQUEST TO ADDRESS THE BOARD OF TRUSTEES" card, available from the Public Affairs Officer. However, the Board Chairperson will invite comments on specific agenda items during the meeting before final votes are taken. Please make sure that the Secretary of the Board has the correct spelling of your name and address to maintain proper records. Comments should be limited to five (5) minutes or less. (This time limit will be doubled for members of the public utilizing a translator to ensure the non-English speaker receives the same opportunity to directly address the Board, unless simultaneous translation equipment is used.)

Anyone who requires a disability-related modification or accommodation in order to participate in any meeting should contact the Chancellor's Office at (951) 222-8801 and speak to an Executive Administrative Assistant as far in advance of the meeting as possible.

Any public records relating to an open session agenda item that is distributed within 72 hours prior to the meeting is available for public inspection at the Riverside Community College District Chancellor's Office, 3rd Floor, 3801 Market Street, Riverside, California, 92501 or online at [www.rccd.edu/administration/board](http://www.rccd.edu/administration/board).

**I. COMMENTS FROM THE PUBLIC**

*Board invites comments from the public regarding any matters within the jurisdiction of the Board of Trustees. Due to the Ralph M. Brown Act, the Board cannot address or respond to comments made under Public Comment.*

**II. ADMINISTRATIVE REPORTS**

- II.A. Presentation by Jurupa Unified School District Education Services staff and Riverside City College Academic Affairs staff on Dual Enrollment.**  
*Information Only*  
[Dual Enrollment\\_JointBoard\\_RCCD-JUSD-final.V3a.pdf](#)

**III. ADJOURNMENT**

# Board of Trustees - Special Joint Board Meeting with Jurupa Unified School District (II.A)

Meeting	March 18, 2019
Agenda Item	Other Items (II.A)
Subject	Presentation by Jurupa Unified School District Education Services staff and Riverside City College Academic Affairs staff on Dual Enrollment.
College/District	
Funding	N/A
Recommended Action	Information Only

---

## Background Narrative:

Information Only

Prepared By: Carol Farrar, Vice President, Academic Affairs, Riverside City College  
Maureen Sinclair, Director, CTE Projects, Norco College  
Roberta Pace, Director, College & Career Readiness, Jurupa Unified School District

---

---

# Dual Enrollment

a partnership for student success in college & career

*presentation to the joint meeting of  
the Jurupa Unified School District Board of Education  
and the Riverside Community College District Board of Trustees*

March 18, 2019



**RCCD** | RIVERSIDE COMMUNITY  
COLLEGE DISTRICT  
MORENO VALLEY COLLEGE | NORCO COLLEGE | RIVERSIDE CITY COLLEGE

# Presenters

Carol Farrar, Vice President of Academic Affairs  
Riverside City College

Maureen Sinclair, Project Director  
Norco College

Roberta Pace, Director of College & Career Readiness  
Jurupa Unified School District

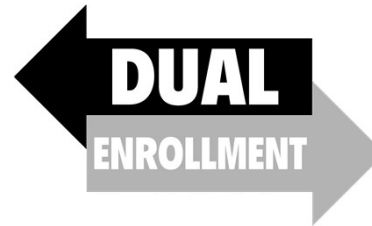


# Dual Enrollment – by the numbers



12%

more likely to complete a bachelor's degree



23%

more likely to enroll in college immediately following high school



19%

more likely to complete a bachelor's degree if two dual enrollment courses completed



**RCCD** RIVERSIDE COMMUNITY COLLEGE DISTRICT  
MORENO VALLEY COLLEGE | NORCO COLLEGE | RIVERSIDE CITY COLLEGE

# Overview

our students

continuing efforts

- concurrent enrollment
- articulation agreements
- early college high school

emerging efforts

- college & career access pathway (CCAP)
- K-12 Strong WorkForce



# Our Students



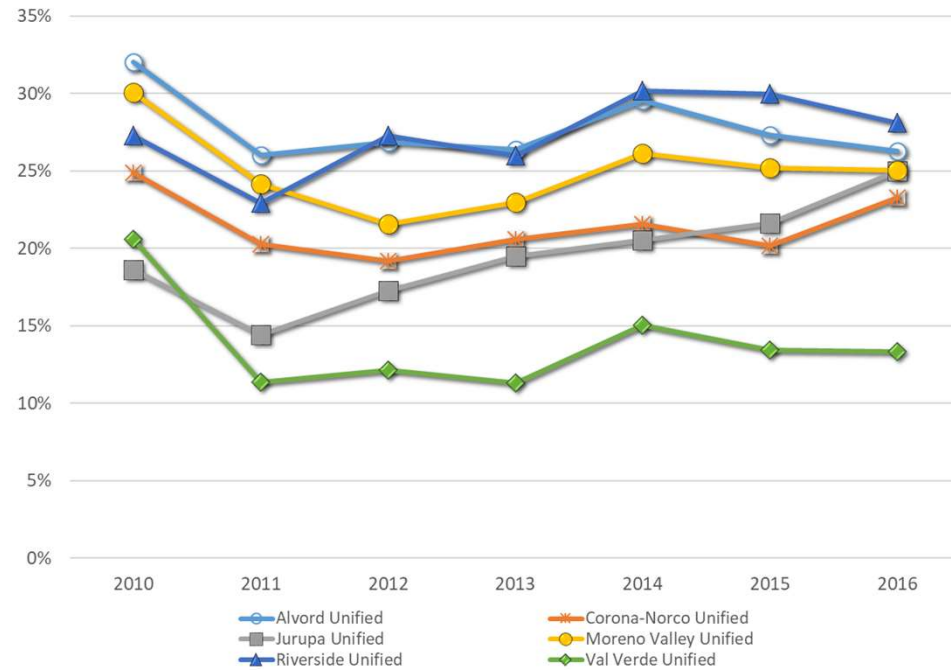
**RCCD** | RIVERSIDE COMMUNITY  
COLLEGE DISTRICT  
MORENO VALLEY COLLEGE | NORCO COLLEGE | RIVERSIDE CITY COLLEGE

# JUSD-RCCD Students

## First-time Freshmen at RCCD colleges

JUSD High School	Fall 2015	Fall 2016	Fall 2017
Jurupa Valley	77	84	100
Patriot	98	112	132
Rubidoux	87	71	64
Nueva Vista	23	19	26
<b>TOTAL</b>	<b>285</b>	<b>286</b>	<b>322</b>
<i>Percent of Total RCCD Freshmen</i>	<i>7.7%</i>	<i>7.8%</i>	<i>8.3%</i>

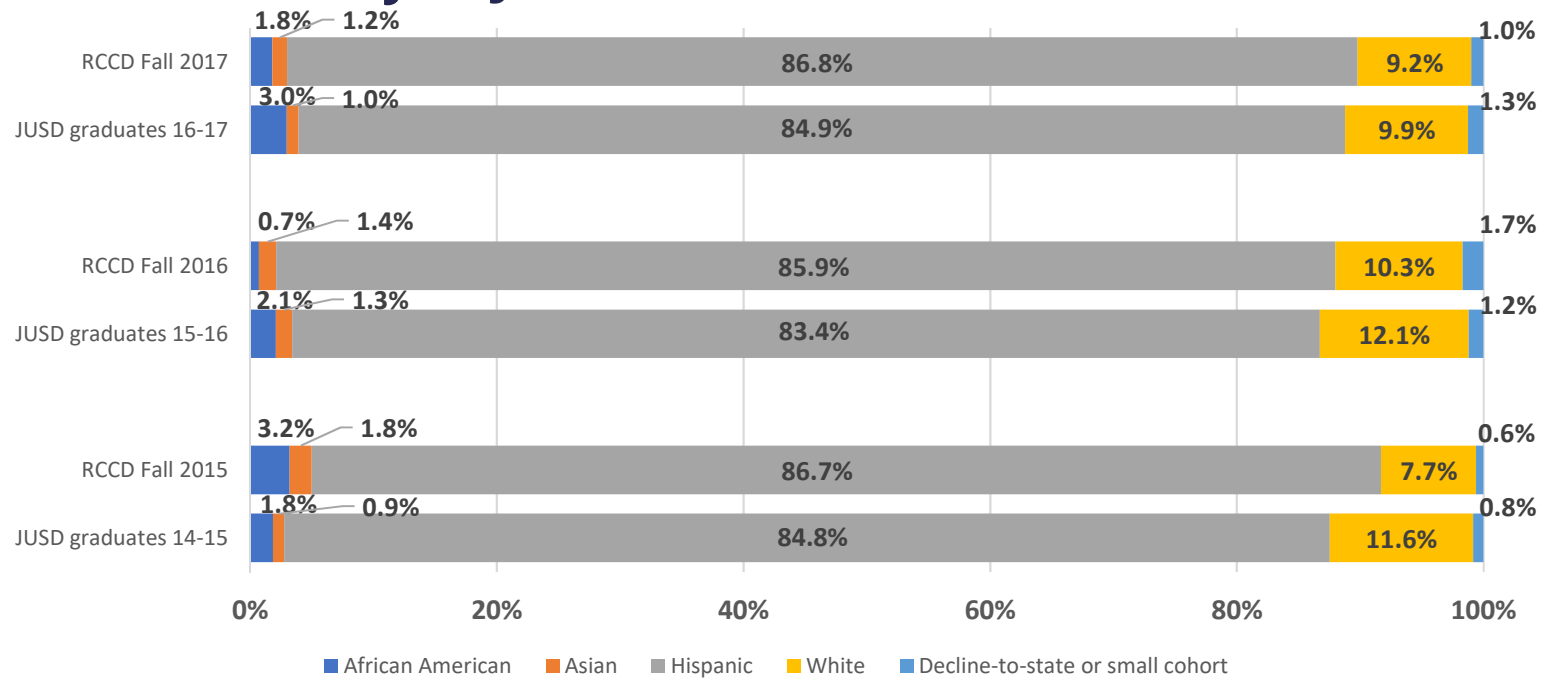
## RCCD Capture Rates





# JUSD-RCCD Students

## Race / Ethnicity of JUSD First-time Freshmen at RCCD



# JUSD-RCCD Students

## Student Success

### Degree and Certificate Awards for Fall 2012 through Fall 2015 First-time Freshmen

	Degree / Certificate	%	Degree / Certificate + Transfer	%	Transfer Only	%	Not Completed (Yet)	Total	% Complete
<b>High School</b>									
Jurupa Valley	17	8.2%	11	5.3%	10	4.8%	170	208	18.3%
Patriot	38	11.4%	11	3.3%	26	7.8%	257	332	22.6%
Rubidoux	7	2.5%	12	4.3%	11	4.0%	246	276	10.9%
Nueva Vista	1	1.9%	0	0.0%	1	1.9%	51	53	3.8%

#### High School Districts

Jurupa Unified	<b>63</b>	<b>7.2%</b>	<b>34</b>	<b>3.9%</b>	<b>48</b>	<b>5.5%</b>	<b>724</b>	<b>869</b>	<b>16.7%</b>
Other RCCD Feeder Districts	<b>480</b>	<b>8.6%</b>	<b>380</b>	<b>6.8%</b>	<b>585</b>	<b>10.5%</b>	<b>4122</b>	<b>5567</b>	<b>26.0%</b>



# Concurrent Enrollment



# Articulation Agreements



# Articulation Agreements

- JUSD maintains agreements with each RCCD college
- 2018-2019AY
  - MVC: 1 agreement
  - NC: 1 agreement
  - RCC: 11 agreements

## JUSD Outcomes 2017-2018 AY *# of Students Earning College Credit Through Articulation*

- JVHS: 230
- PHS: 262
- RHS: 229



# Early College High School



**RCCD** | RIVERSIDE COMMUNITY  
COLLEGE DISTRICT  
MORENO VALLEY COLLEGE | NORCO COLLEGE | RIVERSIDE CITY COLLEGE

# Rubidoux Early College High School (RECHS)

- Launched in Fall 2006
- Rubidoux Annex
  - preparatory courses in grades 9 and 10
  - college classes in grades 11 and 12

## Grade 11 – 13 units

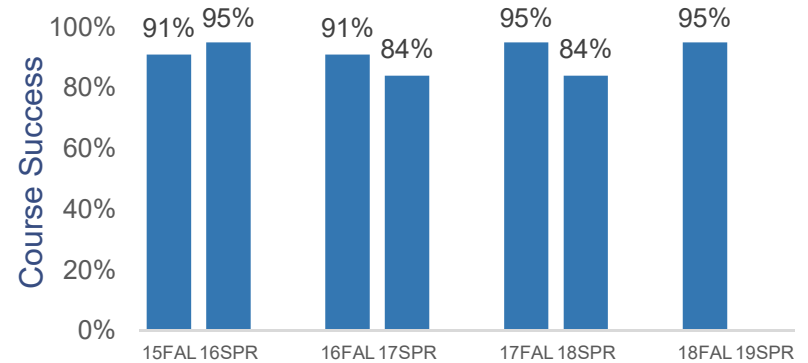
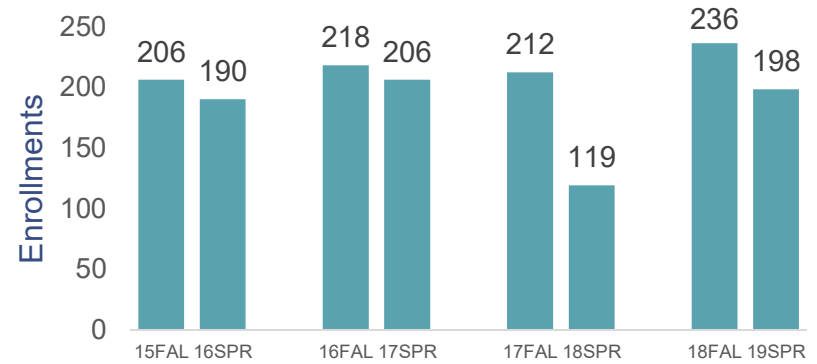
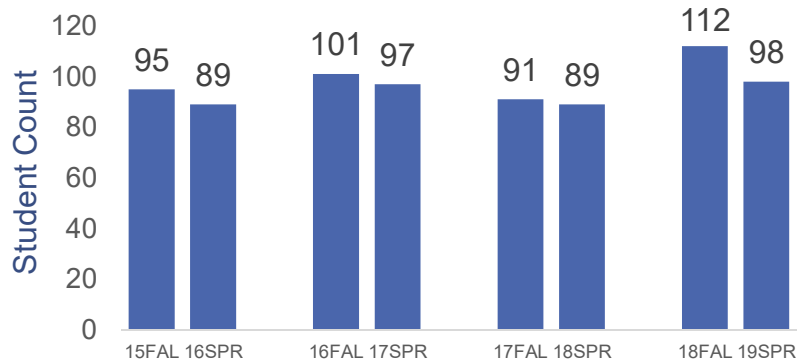
Art History  
Introduction to College  
Interpersonal Communication  
Music Appreciation  
Public Speaking  
Introduction to Sociology  
US History

## Grade 12 – 17 units

Critical Thinking  
Cultural Anthropology  
English Composition or Basic English Composition  
Nutrition  
World Religions



# Rubidoux Early College High School (RECHS)





# College & Career Access Pathways (CCAP)



# College & Career Access Pathways (CCAP)

## Purpose

Expanding dual enrollment for students who may not already be college bound or who are underrepresented in higher education

## Goals

- Seamless pathways to community college for Career & Technical Education or for Transfer
- Improve high school graduation rates
- Improve college and career readiness



# College & Career Access Pathways (CCAP)

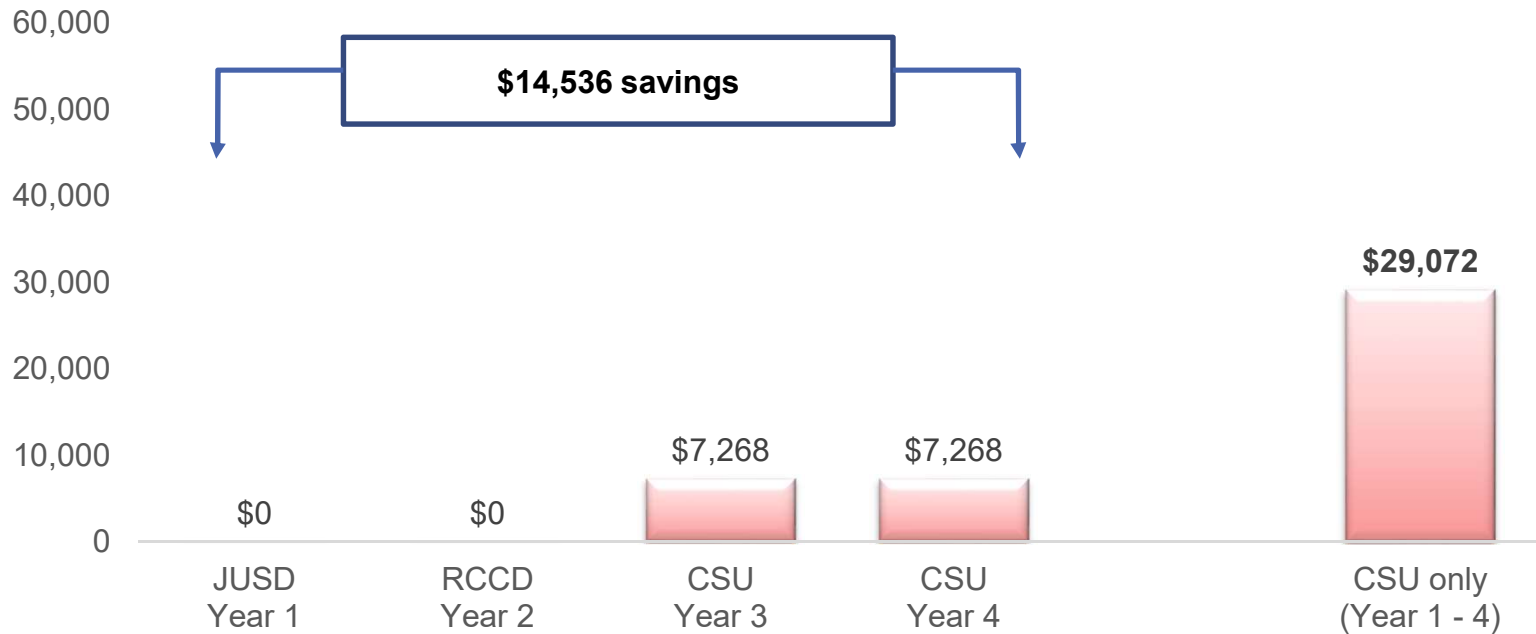
## Features

- Legal foundation | AB 288
- Courses offered on a Pathway
- Flexible options for scheduling
- Enrollment open to high school students only
- Credits earned for high school graduation & college
- Apportionment
- Impact for students



# College & Career Access Pathways (CCAP)

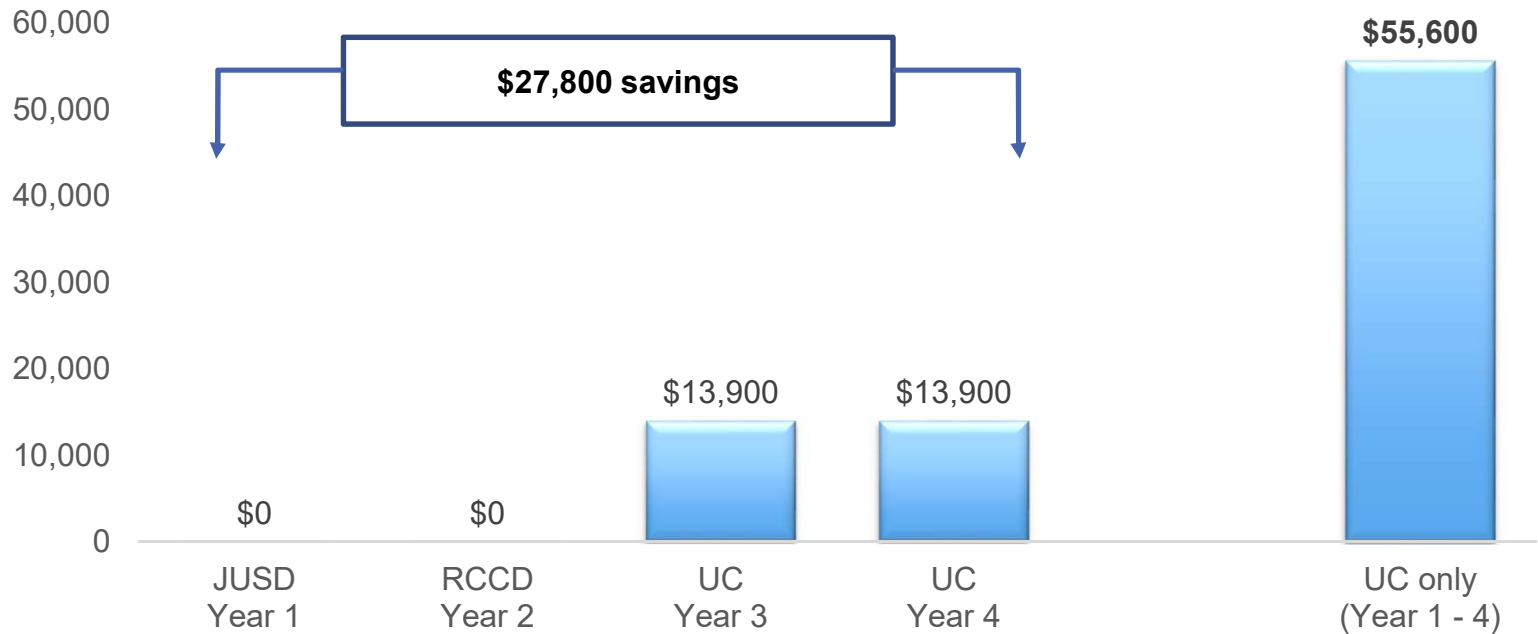
## Saving money - cost of 4-year degree\*



\*Tuition & Fees  
(2018-2019)

# College & Career Access Pathways (CCAP)

## Saving money - cost of 4-year degree\*



\*Tuition & Fees  
(2018-2019)

# College & Career Access Pathways (CCAP)

Saving money – cost of 4-year degree\*



**\$1 million to \$2.2 million**

savings per high school

\*Tuition & Fees  
(2018-2019)

# College & Career Access Pathways (CCAP)



**NORCO**  
COLLEGE



 **RCC**  
RIVERSIDE CITY COLLEGE



**RCCD** | RIVERSIDE COMMUNITY COLLEGE DISTRICT  
MORENO VALLEY COLLEGE | NORCO COLLEGE | RIVERSIDE CITY COLLEGE

# College & Career Access Pathways (CCAP)

## Student Support – Outreach (NC/RCC)

- Senior Nights / Parent Nights
- Application workshops at high schools
- Registration workshops at high schools (NC)
- Information source





# College & Career Access Pathways (CCAP)

## Student Support – Admissions & Records (NC/RCC)

- NC/RCC transcripts
- Unified school district invoicing
- Application and enrollment issues
  - CCAP Applications
  - Adding/Dropping CCAP Classes
  - General Enrollment Support
  - Information source
  - NC/RCC Photo IDs
  - Support transition from CCAP enrollment to “traditional” enrollment at NC/RCC



# College & Career Access Pathways (CCAP)

## Student Support (JUSD)

- Modified Schedule
- 10th grade program fit within regular school day
- 10th grade program – specialized block HS courses-  
AVID/World History
- CCAP included in outreach to incoming 9th and 10th grade students
- Norco College hired JUSD teacher for CCAP class at JVHS



# College & Career Access Pathways (CCAP)

## Student Academic Support

- Counseling
- Educational advising
- Tutoring
- Peer mentors
- Library access
- Faculty Advising



# College & Career Access Pathways (CCAP)



**NORCO**  
COLLEGE



**RCCD** | RIVERSIDE COMMUNITY COLLEGE DISTRICT  
MORENO VALLEY COLLEGE | NORCO COLLEGE | RIVERSIDE CITY COLLEGE

# College & Career Access Pathways (CCAP)

Engineering/Manufacturing Pathway		
Fall 2018	Spring 2019	Fall 2019
MAN-55 <i>OSHA Standards for Industry</i>	ENE-51 <i>Blueprint Reading</i>	
ILA-3 <i>Student Resiliency</i>		

Digital Graphics Pathway		
Fall 2018	Spring 2019	Fall 2019
CIS-93 <i>Computers for Beginners</i>	CIS-78A <i>Introduction to Adobe Photoshop</i>	
ILA-3 <i>Student Resiliency</i>		

## Fall 2018

Student Count 68

Enrollments 115

Course Success 90%

## Spring 2019

Student Count 65

Enrollments 90

Course Success TBD



# College & Career Access Pathways (CCAP)



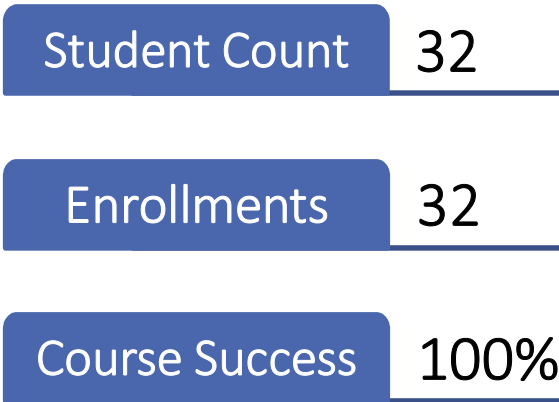
Transfer-focus Pathway					
Year 1		Year 2		Year 3	
Fall	Spring	Fall	Spring	Fall	Spring
MUS-19 <i>Music Appreciation</i>	THE-3 <i>Introduction to Theatre</i>	MUS-19 <i>Music Appreciation</i>	THE-3 <i>Introduction to Theatre</i>	MUS-19 <i>Music Appreciation</i>	THE-3 <i>Introduction to Theatre</i>
	GUI-48 <i>College Success Strategies</i>	SOC-1 <i>Introduction to Sociology</i>	GUI-48 <i>College Success Strategies</i>	SOC-1 <i>Introduction to Sociology</i>	GUI-48 <i>College Success Strategies</i>
			COM-1/9 <i>Communication Studies</i>	ENG-50/ENG-1A <i>English Composition</i>	COM-1/9 <i>Communication Studies</i>
			PSY-1 <i>Introduction to Psychology</i>	Option <i>STEM math track</i>	PSY-1 <i>Introduction to Psychology</i>
					ENG-1A/ENG-1B <i>English Composition OR Critical Thinking</i>
					MAT-12 <i>Statistics OR STEM math</i>

DRAFT – subject to change

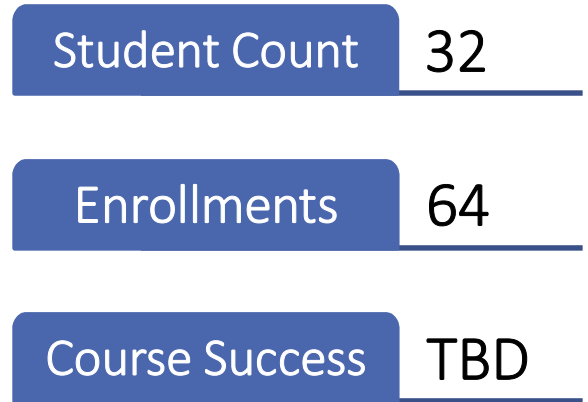
# College & Career Access Pathways (CCAP)

Transfer-focus Pathway	
Year 1	
Fall	Spring
MUS-19 <i>Music Appreciation</i>	THE-3 <i>Introduction to Theatre</i>
	GUI-48 <i>College Success Strategies</i>

## Fall 2018



## Spring 2019



# College & Career Access Pathways (CCAP)

Transfer-focus Pathway	
Year 1	
Fall	Spring
	MUS-19 <i>Music Appreciation</i>

## Spring 2019

Student Count 29

Enrollments 29

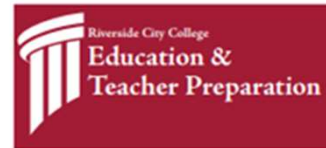
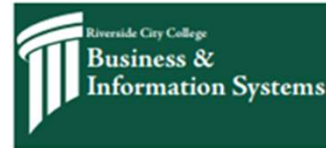
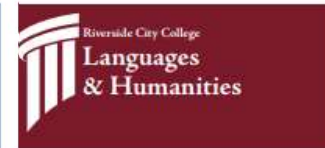
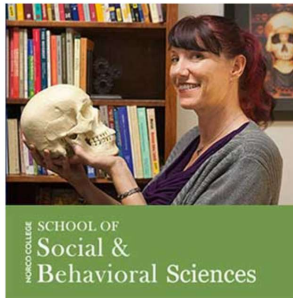
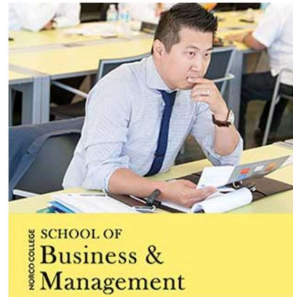
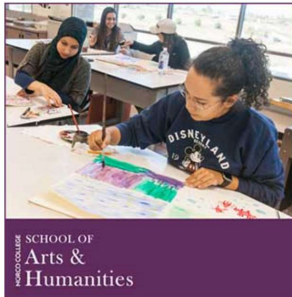
Course Success TBD





# College & Career Access Pathways (CCAP)

## Alignment with Norco & Riverside City College Guided Pathways



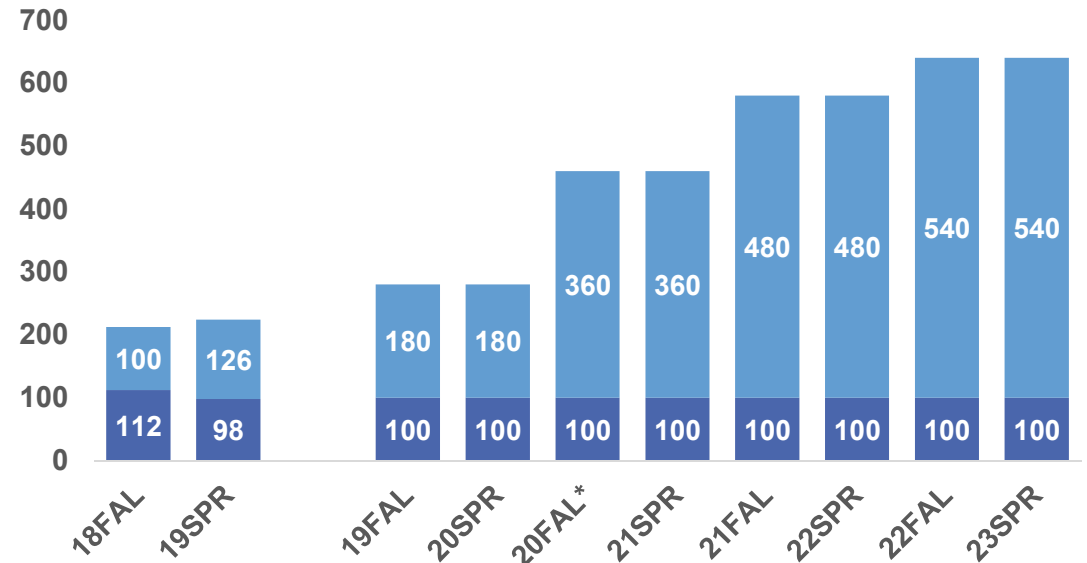
# College & Career Access Pathways (CCAP)

## Program Growth & Timeline

JUSD HS	RCCD Pathway
Jurupa Valley	Engineering/Manufacturing
	Digital Graphics
Patriot	General Education
Rudidoux	General Education

JUSD HS	RCCD Pathway
Jurupa Valley	Engineering/Manufacturing
	Digital Graphics
Patriot	General Education
	Career & Technical Pathway TBD
Rudidoux	General Education
	Career & Technical Pathway TBD

## Estimated JUSD CCAP students



# K-12 Strong WorkForce



**RCCD** | RIVERSIDE COMMUNITY  
COLLEGE DISTRICT  
MORENO VALLEY COLLEGE | NORCO COLLEGE | RIVERSIDE CITY COLLEGE

# K-12 Strong WorkForce

## Update – application submitted

- Pathway alignment
- Equipment update
- Strengthen student advising
- Proposed pathways
  - Design
  - Visual and Media Arts
  - Information and Communications Technology
  - Patient Care



# Questions?

